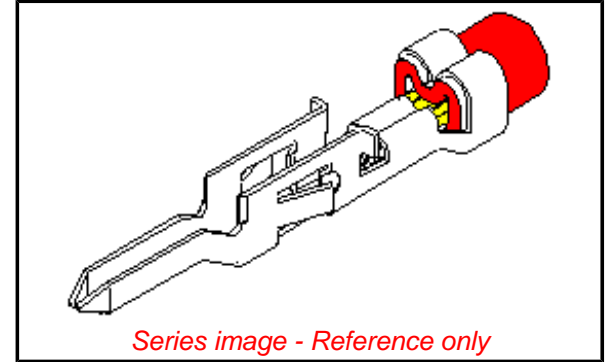


**Part Number:** [0039000049](#)  
**Status:** **Active**  
**Description:** 4.20mm (.165") Pitch Mini-Fit™ Crimp Terminal, Male, with Tin (Sn) Plated Brass Contact, 22-28 AWG, Bag



*Series image - Reference only*

**General**

Product Family	Crimp Terminals
Series	5558
Product Name	Mini-Fit®

**Physical**

Durability (mating cycles) min	100 cycles
Gender	Male
Material - Metal	Brass
Material - Plating Mating	Tin
Material - Plating Termination	Tin
Packaging Type	Bag
Plating min: Mating (µin)	35
Plating min: Mating (µm)	0.88
Plating min: Termination (µin)	35
Plating min: Termination (µm)	0.88
Termination Interface: Style	Crimp or Compression
Wire Insulation Diameter	0.90-1.80mm (.035-.071")
Wire Size AWG	22
Wire Size AWG	24
Wire Size AWG	26
Wire Size AWG	28
Wire Size mm²	N/A

**Electrical**

Voltage - Maximum	600V
-------------------	------

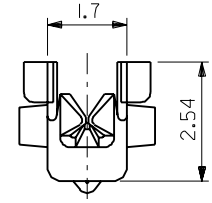
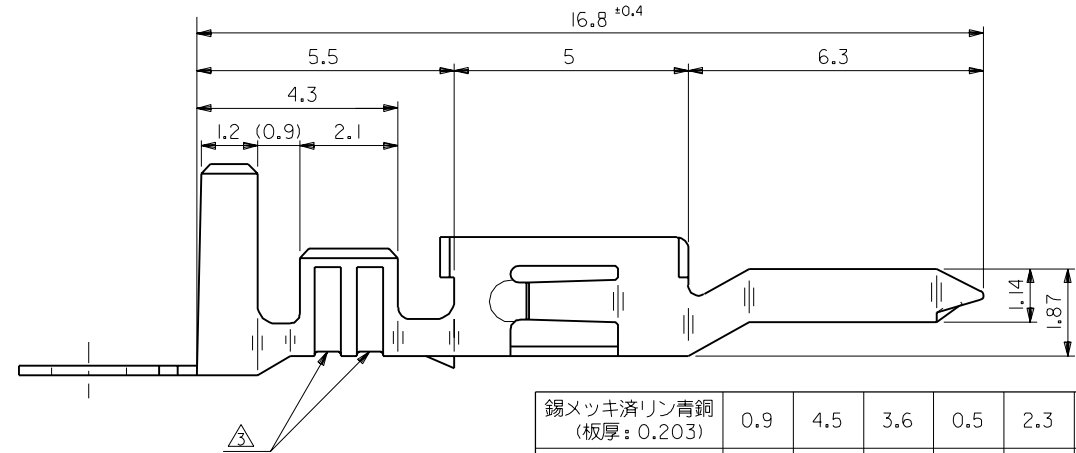
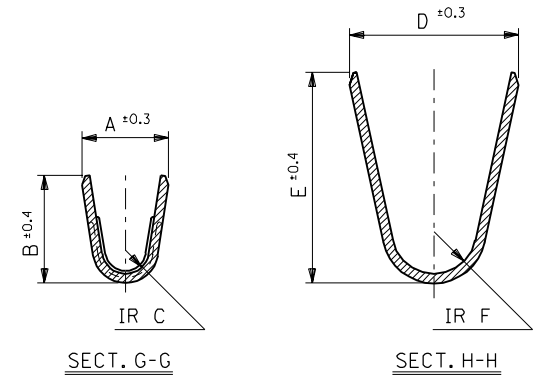
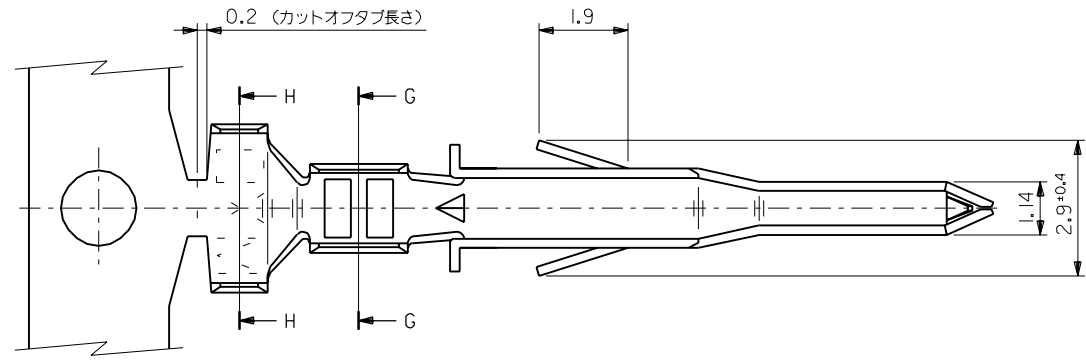
**Material Info**

Old Part Number	5558T2L
-----------------	---------

**EU RoHS**  
ELV and RoHS  
Compliant

**China RoHS**





錫メッキ済リン青銅 (板厚: 0.203)	0.9	4.5	3.6	0.5	2.3	1.9	∅ 1.3-3.1	#18-24	39-00-0062	5558 PBTL	バラ状
錫メッキ済黄銅 (板厚: 0.203)	0.6	2.3	2.3	0.4	1.65	1.8	∅ 0.9-1.8	#22-28	-0061	PBT	連鎖状
	0.9	4.5	3.6	0.5	2.3	1.9	∅ 1.3-3.1	#18-24	-0049	T2L	バラ状
									-0048	T2	連鎖状
									-0041	TL	バラ状
材料	F	E	D	C	B	A	被覆外径	適用電線	EDP NO.	ENG. NO.	端子形状
									39-00-0040	5558 T	連鎖状

注記

- 適合ハウジング: 5559 シリーズ
  - 嵌合相手: 5556 シリーズ
- △ 適用電線が #22-28 の製品のセレーション数は 1 とする。

角度 ANGLE	±3°	F 変更 (JC80619)	Y.K S.K '98/5/6
30 以上 OVER	+0.3	E 変更 (J10380)	H.H S.K '91/5/21
10 以上 30 未満 OVER	+0.25	D 変更&再作図 (J10261)	H.H Y.y '91/4/12
10 未満 UNDER	+0.2	記号 LTR 変更内容 REVISION RECORD	DR. CHK. 日付 DATE
一般公差 GENERAL TOLERANCES		REVISE ONLY ON CAD SYSTEM	

材料 MATERIAL 表参照

仕上げ FINISH —

適用電線範囲 WIRE RANGE 表参照

被覆外径 INS. RANGE 表参照

DRAWN BY '91/4/5 H.HIRAMOTO K.T S.KUNISHI

CHK'D BY '98/7/7 M.FUKUSHIMA

APP'D BY '98/7/7

MOLEX MOLEX-JAPAN CO.,LTD. 日本モレックス株式会社

EDP. NO. 39-00-00\*\*

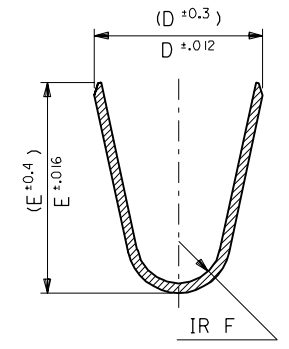
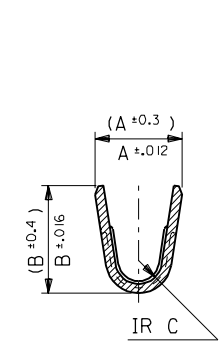
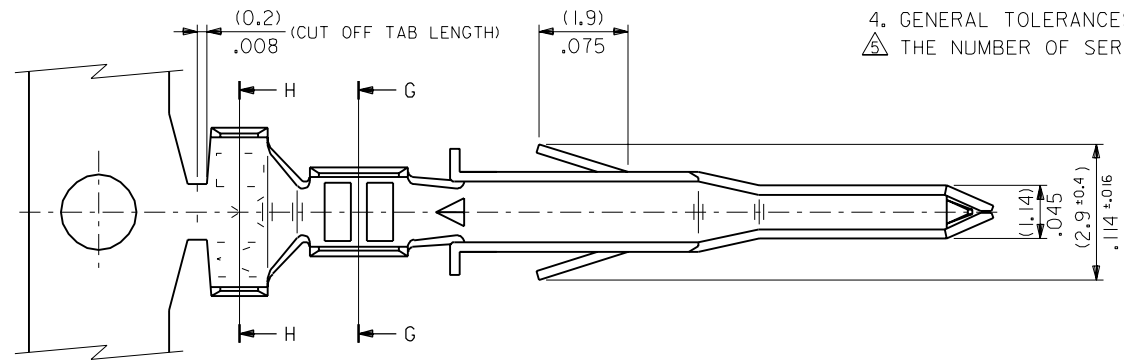
ENG. NO. SD-5558\*\*\*\*

TITLE 名称 NEW MINI. FIT CONN. CRIMP PIN

REV G

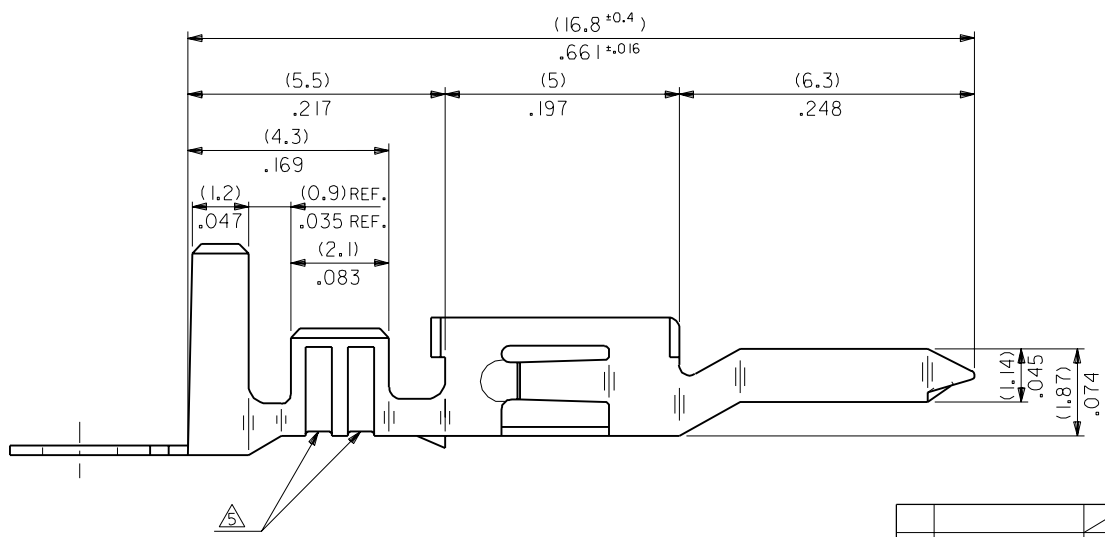
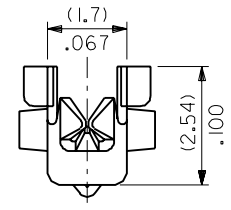
NOTES

1. APPLICABLE HOUSING : 5559 SERIES
  2. MATES WITH TERMINAL : 5556 SERIES
  3. (METRIC) VALUES SHOWN GOVERN OVER ENGLISH CONVERSION VALUES.
  4. GENERAL TOLERANCES OF ENGLISH CONVERSION VALUES : ±.008 INCH
- △ THE NUMBER OF SERRATIONS TO BE ONE FOR WIRE RANGE #22-28.



SECT. G-G


SECT. H-H



角 度		±3°	H	REVISD (J20428)	H.H. Y.Y.	92/5/20	適用電線範圍	SEE SHEET 2 OF 2	材料 MATERIAL SEE SHEET 2 OF 2	MOLEX-MOLEX-JAPAN CO.,LTD. 日本モレックス株式会社	EDP. NO. SEE SHEET 2 OF 2
30 以上 OVER	±0.3	G	REVISD (J1038 II)	H.H. Y.Y.	91/6/25	被覆外徑	SEE SHEET 2 OF 2				
10 以上 30 未滿 OVER UNDER	±0.25	F	REVISD & REDRAWN (J10202)	H.H. Y.Y.	91/4/27	INS. RANGE	SEE SHEET 2 OF 2	DRAWN BY 91/3/12 H.HIRAMOTO	CHK'D BY 98/1/11 K.T.S.KUNISHI	ENG. NO. SHEET 1 OF 2	
10 未滿 UNDER	±0.2	記号 LTR	変更内容 REVISION RECORD	DR. CHK.	日付 DATE	APP'D BY 98/1/11 M.FUKUSHIMA	尺 度 SCALE 10 - 1	TITLE 名称 NEW MINI. FIT CONN. CRIMP PIN	REV K		
一般公差 GENERAL TOLERANCES		REVISE ONLY ON CAD SYSTEM									

THIS DRAWING CONTAINS INFORMATION THAT IS PROPRIETARY TO MOLEX/JAPAN AND SHOULD NOT BE USED WITHOUT WRITTEN PERMISSION  
 本図面は日本モレックス(株)の所有する情報を含むもので 当社の許可なく複製を禁止する。

TIN PLATED PHOSPHOR BRONZE	(0.9) .035	(4.5) .177	(3.6) .142	(0.6) .024	(2.7) .106	(2.3) .091	∅ (3.1) .122 MAX.	# 16	39-00-0084	5558 PBT3L	LOOSE
	(0.6) .024	(2.3) .091	(2.3) .091	(0.4) .016	(1.65) .065	(1.8) .071	∅ (0.9-1.8) .035-.071	#22-28	-0083	PBT3	CHAIN
	(0.9) .035	(4.5) .177	(3.6) .142	(0.5) .020	(2.3) .091	(1.9) .075	∅ (1.3-3.1) .051-.122	# 18-24	-0068	PBT2L	LOOSE
TIN OVER COPPER PLATED BRASS	(0.9) .035	(4.5) .177	(3.6) .142	(0.6) .024	(2.7) .106	(2.3) .091	∅ (3.1) .122 MAX.	# 16	-0067	PBT2	CHAIN
	(0.6) .024	(2.3) .091	(2.3) .091	(0.4) .016	(1.65) .065	(1.8) .071	∅ (0.9-1.8) .035-.071	#22-28	-0062	PBTL	LOOSE
	(0.9) .035	(4.5) .177	(3.6) .142	(0.5) .020	(2.3) .091	(1.9) .075	∅ (1.3-3.1) .051-.122	# 18-24	-0061	PBT	CHAIN
MATERIAL	F	E	D	C	B	A	INS. RANGE	WIRE RANGE	EDP NO.	ENG. NO.	FORM

材料 MATERIAL	SEE CHART	 MOLEX-JAPAN CO.,LTD. 日本モレックス株式会社
THICKNESS : (0.203)/.008	SEE CHART	
仕上げ FINISH	SEE CHART	EDP. NO.
適用電線範囲 WIRE RANGE	SEE CHART	SEE CHART
被覆外径 INS. RANGE	SEE CHART	ENG. NO. SHEET 2 OF 2 REV
DRAWN BY '91/3/R H.HIRAMOTO	CHK'D BY '98/7/7 K.T.S.KUNISHI	SD-5558*****
APP'D BY '98/7/7 M.FUKUSHIMA	尺度 SCALE 10 - 1	TITLE 名称 NEW MINI. FIT CONN. CRIMP PIN

角度 ANGLE	±3°	H	SEE SHEET 1 OF 2	H.H Y.Y	'92/5/20
30以上 OVER	+0.3	G	SEE SHEET 1 OF 2	H.H Y.Y	'91/6/25
10以上 30未滿 UNDER	+0.25	F	SEE SHEET 1 OF 2	H.H Y.Y	'91/4/27
10未滿 UNDER	+0.2	記号 LTR	変更内容 REVISION RECORD	DR. CHK.	日付 DATE
一般公差 GENERAL TOLERANCES		REVISE ONLY ON CAD SYSTEM			