

Series image - Reference only

EU RoHS

China RoHS

ELV and RoHS Compliant



Duration at Max. Process Temperature (seconds) 5

Lead-free Process Capability

Wave Capable (TH only)

Max. Cycles at Max. Process Temperature

1

Process Temperature max. C

235

### Search Parts in this Series

[41791 Series](#)

### Mates With

[3069](#), [2139](#), [2145](#), [6442](#), [7674](#), [7675](#), [41695](#), [41815](#)

**Part Number:** **0026604080**

**Status:** **Active**

**Description:** 3.96mm (.156") Pitch KK® Solid Header, Vertical, Friction Lock, 8 Circuits, Tin (Sn) Plating

### Documents:

- [Drawing \(PDF\)](#)
- [Product Specification PS-08-50 \(PDF\)](#)
- [3D Model](#)
- [Packaging Specification \(PDF\)](#)
- [Related Catalog Page \(PDF\)](#)

### Order Products:

[Check Distributor Inventory](#)

**Part Detail: [\(show all\)](#)**○ **General**○ **Physical**○ **Electrical**○ **Material Info**○ **Reference - Drawing Numbers****General**

Product Family	PCB Headers
Series	<a href="#">41791</a>
Application	Wire-to-Board
Product Name	KK®

**Physical**

Breakaway	No
Circuits (Loaded)	8
Circuits (maximum)	8
Color - Resin	Natural
Durability (mating cycles) min	25 cycles
Flammability	94V-0
Lock to Mating Part	Yes
Material - Metal	Brass
Material - Plating Mating	Tin
Material - Plating Termination	Tin
Material - Resin	Polyester
Number of Rows	1
Orientation	Vertical
PC Tail Length (in)	0.140 In
PC Tail Length (mm)	3.56 mm
PCB Locator	No
PCB Retention	None
PCB Thickness Recommended (in)	0.062 In
PCB Thickness Recommended (mm)	1.60 mm
Packaging Type	Bag
Pitch - Mating Interface (in)	0.156 In
Pitch - Mating Interface (mm)	3.96 mm
Plating min: Mating (uin)	200
Plating min: Mating (um)	5
Plating min: Termination (uin)	200
Plating min: Termination (um)	5
Polarized to Mating Part	Yes
Polarized to PCB	No

Shrouded	Partial
Stackable	Yes
Temperature Range - Operating	0°C to +75°C
Termination Interface: Style	Through Hole

### **Electrical**

CSA	LR19980
Current - Maximum	7.00 Amp
UL	E29179
Voltage - Maximum	250V

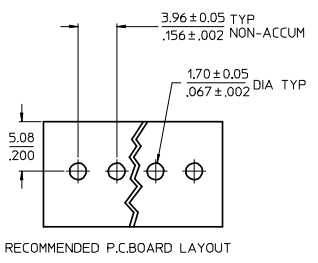
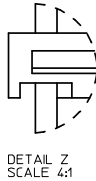
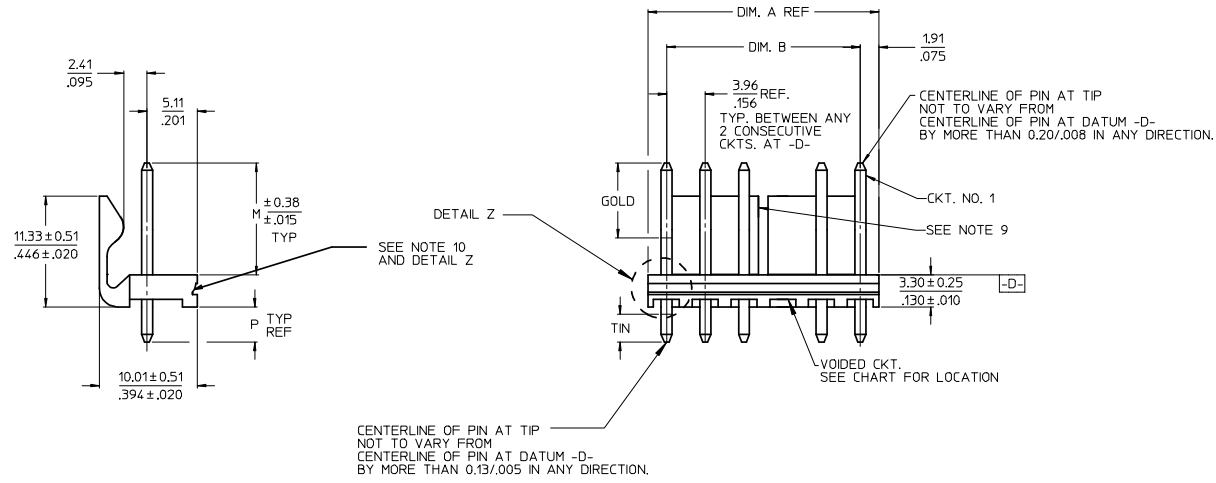
### **Material Info**

Old Part Number	41791-0008
-----------------	------------

### **Reference - Drawing Numbers**

Product Specification	PS-08-50
Sales Drawing	SDA-41791

CKT	DIM. A	DIM. B	SLOT LOC BETWEEN CKTS
2	7.77 .306	3.96±0.05 .156±.002	NONE
3	11.73 .462	7.92±0.08 .312±.003	NONE
4	15.70 .618	11.89±0.08 .468±.003	NONE
5	19.66 .774	15.85±0.10 .624±.004	NONE
6	23.62 .930	19.81±0.10 .780±.004	3 & 4
7	27.58 1.086	23.77±0.10 .936±.004	4 & 5
8	31.55 1.242	27.74±0.13 1.092±.005	4 & 5
9	35.51 1.398	31.70±0.13 1.248±.005	5 & 6
10	39.47 1.554	35.66±0.13 1.404±.005	5 & 6
11	43.43 1.710	39.62±0.15 1.560±.006	6 & 7
12	47.40 1.866	43.59±0.15 1.716±.006	4 & 5 8 & 9
13	51.36 2.022	47.55±0.15 1.872±.006	4 & 5 9 & 10
14	55.32 2.178	51.51±0.18 2.028±.007	5 & 6 9 & 10
15	59.28 2.334	55.47±0.18 2.184±.007	5 & 6 10 & 11
16	63.25 2.490	59.44±0.18 2.340±.007	5 & 6 11 & 12
17	67.21 2.646	63.40±0.20 2.496±.008	6 & 7 11 & 12
18	71.17 2.802	67.36±0.20 2.652±.008	6 & 7 12 & 13



CENTERLINE OF PIN AT TIP  
NOT TO VARY FROM  
CENTERLINE OF PIN AT DATUM -D-  
BY MORE THAN 0.13/.005 IN ANY DIRECTION.

- NOTES:
- MATERIAL: HEADER-GLASS FILLED POLYESTER, 94V-0, MOLDED NATURAL (WHITE).
  - FINISH: (102-TIN) OVERALL TIN: 0.00508/.000200 MIN OVER 0.00254/.000100 MIN COPPER.  
(122-TIN) OVERALL TIN: 0.00381/.000150 MIN OVER 0.00076/.000030 MIN NICKEL.  
\*(208-15 GOLD) SELECT GOLD: 0.00038/.000015 MIN, SELECT TIN: 0.00254/.000100 MIN, OVERALL NICKEL UNDERPLATE: 0.00127/.000050 MIN.  
\*(228-30 GOLD) SELECT GOLD: 0.00076/.000030 MIN, SELECT TIN: 0.00254/.000100 MIN, OVERALL NICKEL UNDERPLATE: 0.00127/.000050 MIN.  
(501-GOLD) OVERALL GOLD: 0.00051/.000020 MIN OVER 0.00076/.000030 MIN NICKEL.
  - THE PRIMARY SHIPPING CARTON WILL BE LABELED "COMPLIANT TO RoHS DIRECTIVE 2002/95/EC AND ELV ANNEX II OF DIRECTIVE 2000/53/EC". CARTONS WITHOUT THIS LABEL MAY CONTAIN PRODUCT WITH TIN-LEAD PLATING.
  - PRODUCT SPECIFICATION AND PROCESS PARAMETERS: SEE PS-08-50.
  - PACKAGING INFORMATION: SEE CHARTS.
  - SOLDERABILITY: PER SMES-152.
  - PIN PUSH-OUT FORCE, PRIOR TO SOLDERING, A 3 LB. MINIMUM FORCE (IN EITHER DIRECTION)
  - PARTS ARE STACKABLE END TO END ON 3.96/.156 CENTERS.
  - THIS PART CONFORMS TO CLASS B REQUIREMENTS OF COSMETIC SPECIFICATION PS-45499-002.
  - SLOTS ON BACKWALL ARE BETWEEN CIRCUITS. SEE CHART FOR LOCATION.
  - FEATURE MAY OR MAY NOT EXTEND ACROSS THE ENTIRE FACE OF THE PART "SEE DETAIL Z".

2-*	P8
1	P9
SHT	REV

ADD EDP FOR -0467  
EC NO: UCP2008-2196  
DRWN: AELHAG 2008/03/19  
CHKD: ADERR 2008/03/19  
APPR: FSMITH 2008/03/26  
REV P9

QUALITY SYMBOLS  
▽=0  
▽=0

	GENERAL TOLERANCES (UNLESS SPECIFIED)	
	mm	INCH
4 PLACES	± ---	± ---
3 PLACES	± ---	± .010
2 PLACES	± 0.25	± .015
1 PLACE	± 0.38	± ---
ANGULAR ± 1/2°		

DRAFT WHERE APPLICABLE  
MUST REMAIN  
WITHIN DIMENSIONS

DIMENSION STYLE	
MM/IN	
DRAWN BY	DATE
JSCHAFFER	11-07-03
CHECKED BY	DATE
KSAMIEC	11-10-03
APPROVED BY	DATE
MARGULIS	11-17-03
MATERIAL NO.	
SEE CHART	
SIZE	
B	

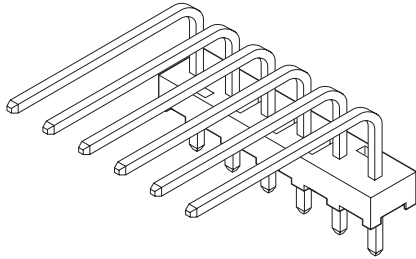
SCALE	DESIGN UNITS	THIRD ANGLE PROJECTION
2:1	INCH	THIRD ANGLE PROJECTION
TITLE		
KK 156 HEADER ASSEMBLY FRICTION LOCK VERTICAL SOLID BODY W/O PEGS		
MOLEX MOLEX INCORPORATED		
DOCUMENT NO.	SDA-41791	SHEET NO.
		1 OF *
THIS DRAWING CONTAINS INFORMATION THAT IS PROPRIETARY TO MOLEX INCORPORATED AND SHOULD NOT BE USED WITHOUT WRITTEN PERMISSION		

OPTIONS	Group	A-41791-0002/0018	Group	A-41791-0832/0848	Group	A-41791-0849/0865	Group	A-41791-0773/0785
	Header No:	41790-0002/0018	Header No:	41790-0002/0018	Header No:	41790-0002/0018	Header No:	41790-0006/0018
	Pin No:	2161-94(102)	Pin No:	43294-0209	Pin No:	43294-0210	Pin No:	2161-94(102)
	Plating:	102 – TIN	Plating:	208 – 15 GOLD	Plating:	228 – 30 GOLD	Plating:	102 – TIN
	Pin Length L	18.29 / .720	Pin Length L	18.29/. 720	Pin Length L	18.29/. 720	Pin Length L	18.29 / .720
	Mating M	11.43 / .450	Mating M	11.43/. 450	Mating M	11.43/. 450	Mating M	11.43 / .450
	Gold Loc G	N/A	Gold Loc G	6.86/. 270	Gold Loc G	6.86/. 270	Gold Loc G	N/A
	PC Tail P	3.56 / .140	PC Tail P	3.56/. 140	PC Tail P	3.56/. 140	PC Tail P	3.56 / .140
	Tin Loc T	OVERALL	Tin Loc T	4.06/. 160	Tin Loc T	4.06/. 160	Tin Loc T	OVERALL
	Voided Ckts	NONE	Voided Ckts	NONE	Voided CKts	NONE	Voided Ckts	3, 6
Pack Per	PK-41791-001	Pack Per	PK-41791-001	Pack Per	PK-41791-001	Pack Per	PK-41791-001	
Ckts	Material No	Engineer Number	Material No	Engineer Number	Material No	Engineer Number	Material No	Engineer Number
2	26-60-4020	A-41791-0002	41791-0832	A-41791-0832	41791-0849	A-41791-0849		
3	26-60-4030	A-41791-0003	41791-0833	A-41791-0833	41791-0850	A-41791-0850		
4	26-60-4040	A-41791-0004	41791-0834	A-41791-0834	41791-0851	A-41791-0851		
5	26-60-4050	A-41791-0005	41791-0835	A-41791-0835	41791-0852	A-41791-0852		
6	26-60-4060	A-41791-0006	41791-0836	A-41791-0836	41791-0853	A-41791-0853		
7	26-60-4070	A-41791-0007	41791-0837	A-41791-0837	41791-0854	A-41791-0854	41791-0774	A-41791-0774
8	26-60-4080	A-41791-0008	41791-0838	A-41791-0838	41791-0855	A-41791-0855		
9	26-60-4090	A-41791-0009	41791-0839	A-41791-0839	41791-0856	A-41791-0856		
10	26-60-4100	A-41791-0010	41791-0840	A-41791-0840	41791-0857	A-41791-0857		
11	26-60-4110	A-41791-0011	41791-0841	A-41791-0841	41791-0858	A-41791-0858		
12	26-60-4120	A-41791-0012	41791-0842	A-41791-0842	41791-0859	A-41791-0859		
13	26-60-4130	A-41791-0013	41791-0843	A-41791-0843	41791-0860	A-41791-0860		
14	26-60-4140	A-41791-0014	41791-0844	A-41791-0844	41791-0861	A-41791-0861		
15	26-60-4150	A-41791-0015	41791-0845	A-41791-0845	41791-0862	A-41791-0862		
16	26-60-4160	A-41791-0016	41791-0846	A-41791-0846	41791-0863	A-41791-0863		
17	26-60-4170	A-41791-0017	41791-0847	A-41791-0847	41791-0864	A-41791-0864		
18	26-60-4180	A-41791-0018	41791-0848	A-41791-0848	41791-0865	A-41791-0865		

<b>P8</b>	REV: <u>ECR/ECN INFORMATION</u>	<b>TITLE:</b>  <b>KK 156 HEADER ASSEMBLY FRICTION LOCK VERTICAL SOLID BODY W/O PEGS</b>	<b>SHEET No.</b>  <b>- 2 -</b>
	EC NO.: <b>UCP2008-2196</b>		
	DATE: <b>3/26/2008</b>		
<u>DOCUMENT NUMBER:</u> <b>SDA- 41791</b>	<u>CREATED / REVISED BY:</u> <b>AELHAG</b>	<u>CHECKED BY:</u> <b>ADERR</b>	<u>APPROVED BY:</u> <b>FSMITH</b>

# 3.96mm (.156") Pitch KK® Solid Header

## 41772 Right Angle Without Pegs



Circuits	Order No.			
	Tin	15µ" Select Gold	30µ" Select Gold	Overall Gold
2	<a href="#">26-60-3020</a>	<a href="#">41772-0463</a>	<a href="#">41772-0480</a>	<a href="#">26-61-3020</a>
3	<a href="#">26-60-3030</a>	<a href="#">41772-0464</a>	<a href="#">41772-0481</a>	<a href="#">26-61-3030</a>
4	<a href="#">26-60-3040</a>	<a href="#">41772-0465</a>	<a href="#">41772-0482</a>	<a href="#">26-61-3040</a>
5	<a href="#">26-60-3050</a>	<a href="#">41772-0466</a>	<a href="#">41772-0483</a>	<a href="#">26-61-3050</a>
6	<a href="#">26-60-3060</a>	<a href="#">41772-0467</a>	<a href="#">41772-0484</a>	<a href="#">26-61-3060</a>
7	<a href="#">26-60-3070</a>	<a href="#">41772-0468</a>	<a href="#">41772-0485</a>	<a href="#">26-61-3070</a>
8	<a href="#">26-60-3080</a>	<a href="#">41772-0469</a>	<a href="#">41772-0486</a>	<a href="#">26-61-3080</a>
9	<a href="#">26-60-3090</a>	<a href="#">41772-0470</a>	<a href="#">41772-0487</a>	<a href="#">26-61-3090</a>
10	<a href="#">26-60-3100</a>	<a href="#">41772-0471</a>	<a href="#">41772-0488</a>	<a href="#">26-61-3100</a>

Circuit number designation is for ordering purposes only, check corresponding circuit designation on mating connector

### Features and Benefits

- Sizes 2 to 18 circuits
- Optional voided circuits available (contact Molex)
- Various pin lengths available (contact Molex)
- End-to-end stackable

### Reference Information

Product Specification: PS-08-50  
 Packaging: Bag  
 UL File No.: E29179  
 CSA File No.: LR19980  
 TUV File No.: R75108  
 Mates With: 2139, 2145, 3069, 6442, 7674, 7675, 41695 and 41815  
 Designed In: Inches

### Electrical

Voltage: 250V  
 Current: 7.0A  
 Contact Resistance: 6 milliohms max.  
 Dielectric Withstanding Voltage: 1500V  
 Insulation Resistance: 50,000 Megohms min.

### Mechanical

Durability:  
 Tin—25 cycles max.  
 Gold—100 cycles max.

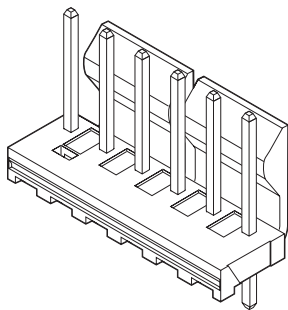
### Physical

Housing: Polyester, UL 94V-0  
 Contact: Brass, 1.14mm (.045") square  
 Plating: See Table  
 Operating Temperature: -40 to +105°C

Circuits	Order No.			
	Tin	15µ" Select Gold	30µ" Select Gold	Overall Gold
11	<a href="#">26-60-3110</a>	<a href="#">41772-0472</a>	<a href="#">41772-0489</a>	<a href="#">26-61-3110</a>
12	<a href="#">26-60-3120</a>	<a href="#">41772-0473</a>	<a href="#">41772-0490</a>	<a href="#">26-61-3120</a>
13	<a href="#">26-60-3130</a>	<a href="#">41772-0474</a>	<a href="#">41772-0491</a>	<a href="#">26-61-3130</a>
14	<a href="#">26-60-3140</a>	<a href="#">41772-0475</a>	<a href="#">41772-0492</a>	<a href="#">26-61-3140</a>
15	<a href="#">26-60-3150</a>	<a href="#">41772-0476</a>	<a href="#">41772-0493</a>	<a href="#">26-61-3150</a>
16	<a href="#">26-60-3160</a>	<a href="#">41772-0477</a>	<a href="#">41772-0494</a>	<a href="#">26-61-3160</a>
17	<a href="#">26-60-3170</a>	<a href="#">41772-0478</a>	<a href="#">41772-0495</a>	<a href="#">26-61-3170</a>
18	<a href="#">26-60-3180</a>	<a href="#">41772-0479</a>	<a href="#">41772-0496</a>	<a href="#">26-61-3180</a>

# 3.96mm (.156") Pitch KK® Solid Header

## 41791 Vertical, Friction Lock



Circuits	Order No.				Lead-free
	Tin	15µ" Select Gold	30µ" Select Gold	Overall Gold	
2	<a href="#">26-60-4020</a>	<a href="#">41791-0832</a>	<a href="#">41791-0849</a>	<a href="#">26-61-4020</a>	Yes
3	<a href="#">26-60-4030</a>	<a href="#">41791-0833</a>	<a href="#">41791-0850</a>	<a href="#">26-61-4030</a>	
4	<a href="#">26-60-4040</a>	<a href="#">41791-0834</a>	<a href="#">41791-0851</a>	<a href="#">26-61-4040</a>	
5	<a href="#">26-60-4050</a>	<a href="#">41791-0835</a>	<a href="#">41791-0852</a>	<a href="#">26-61-4050</a>	
6	<a href="#">26-60-4060</a>	<a href="#">41791-0836</a>	<a href="#">41791-0853</a>	<a href="#">26-61-4060</a>	
7	<a href="#">26-60-4070</a>	<a href="#">41791-0837</a>	<a href="#">41791-0854</a>	<a href="#">26-61-4070</a>	
8	<a href="#">26-60-4080</a>	<a href="#">41791-0838</a>	<a href="#">41791-0855</a>	<a href="#">26-61-4080</a>	
9	<a href="#">26-60-4090</a>	<a href="#">41791-0839</a>	<a href="#">41791-0856</a>	<a href="#">26-61-4090</a>	
10	<a href="#">26-60-4100</a>	<a href="#">41791-0840</a>	<a href="#">41791-0857</a>	<a href="#">26-61-4100</a>	

Circuit number designation is for ordering purposes only, check corresponding circuit designation on mating connector

### Features and Benefits

- Sizes 2 to 18 circuits
- Provides left to right polarization when mated with 41695 or 43061 .156" crimp housing with the optional polarizing ribs
- Various pin lengths available
- Voided circuits available (contact Molex)
- Passive locking feature is used to maintain interconnection, ideal for high vibration applications
- End-to-end stackable

### Reference Information

Product Specification: PS-08-50  
 Packaging: Bag  
 UL File No.: E29179  
 CSA File No.: LR19980  
 TUV File No.: R75108  
 Mates With: 2139, 2145, 3069, 6442, 7674, 7675, 41695 and 41815  
 Designed In: Inches

### Electrical

Voltage: 250V  
 Current: 7.0A  
 Contact Resistance: 6 milliohms max.  
 Dielectric Withstanding Voltage: 1500V  
 Insulation Resistance: 50K Megohms min.

### Mechanical

Durability: Tin—25 cycles max.  
 Gold—100 cycles max.

### Physical

Housing: Polyester, UL 94V-0  
 Contact: Brass, 1.14mm (.045") pin  
 Plating: See Table  
 Operating Temperature: 0 to +75°C

Circuits	Order No.				Lead-free
	Tin	15µ" Select Gold	30µ" Select Gold	Overall Gold	
11	<a href="#">26-60-4110</a>	<a href="#">41791-0841</a>	<a href="#">41791-0858</a>	<a href="#">26-61-4110</a>	Yes
12	<a href="#">26-60-4120</a>	<a href="#">41791-0842</a>	<a href="#">41791-0859</a>	<a href="#">26-61-4120</a>	
13	<a href="#">26-60-4130</a>	<a href="#">41791-0843</a>	<a href="#">41791-0860</a>	<a href="#">26-61-4130</a>	
14	<a href="#">26-60-4140</a>	<a href="#">41791-0844</a>	<a href="#">41791-0861</a>	<a href="#">26-61-4140</a>	
15	<a href="#">26-60-4150</a>	<a href="#">41791-0845</a>	<a href="#">41791-0862</a>	<a href="#">26-61-4150</a>	
16	<a href="#">26-60-4160</a>	<a href="#">41791-0846</a>	<a href="#">41791-0863</a>	<a href="#">26-61-4160</a>	
17	<a href="#">26-60-4170</a>	<a href="#">41791-0847</a>	<a href="#">41791-0864</a>	<a href="#">26-61-4170</a>	
18	<a href="#">26-60-4180</a>	<a href="#">41791-0848</a>	<a href="#">41791-0865</a>	<a href="#">26-61-4180</a>	