

Switch Language

English

Need Assistance?

- Contact Us
- Find a Distributor
- Order Samples
- Tech Library

Printer-friendly page

Email this page

[Home](#) [Quick Disconnects](#) [Datasheet](#)

Part Number: 0196060005

Status: Active

Description: Avikrimp™ Fully Insulated Quick Disconnect, Female, for 10-12 AWG Wire, Box

Documents:

Note - Please disable browser pop-up blockers for documents on www.molex.com

[Drawing \(PDF\)](#)

[Related Catalog Page \(PDF\)](#)

Order Products:

[Check Distributor Inventory](#)

[Add to My Parts](#)

[Request Samples](#)

Part Detail: ([show all](#))

[General](#) [Physical](#) [Electrical](#) [Material Info](#)

General

Product Family	Quick Disconnects
Series	19606
Product Name	Avikrimp™
Type	Quick Disconnect

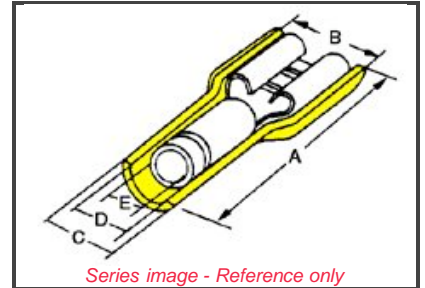
Physical

Barrel Type	Closed
Flammability	94V-2
Gender	Female
Insulation	Nylon (PA)
Lock to Mating Part	None
Material - Metal	Brass
Material - Plating Mating	Tin
Material - Plating Termination	Tin
Orientation	Straight
Packaging Type	Bag
Plating min: Mating (µin)	100
Plating min: Mating (µm)	2.5
Plating min: Termination (µin)	100
Plating min: Termination (µm)	2.5
Polarized to Mating Part	No
Tab Thickness	0.81mm (.032")
Tab Width	6.35mm (.250")
Temperature Range - Operating	-65°C to +105°C
Termination Interface: Style	Crimp or Compression
Wire Insulation Diameter	5.84mm (.230") max.
Wire Size AWG	10
Wire Size AWG	12
Wire Size mm²	3.30 - 5.00

Electrical

CSA	LR18689
UL	E79133
Voltage - Maximum	300V

Material Info



EU RoHS

ELV and RoHS Compliant

China RoHS



Need more information on product compliance?

Email productcompliance@molex.com

Please visit the [Contact Us](#) section for any non-product compliance questions.

Search Parts in this Series

[19606](#) Series

Application Tooling

Tooling specifications and manuals are found by selecting the products below. Crimp Height Specifications are then contained in the Application Tooling Specification document.

Global

Description	Product #
Hand Crimp Tool	0640010200
Crimp Head for the AT-200™ Pneumatic Hand Tool	0640050200

Reference - Drawing Numbers

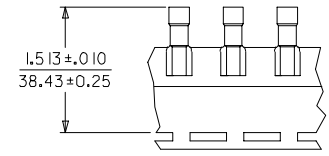
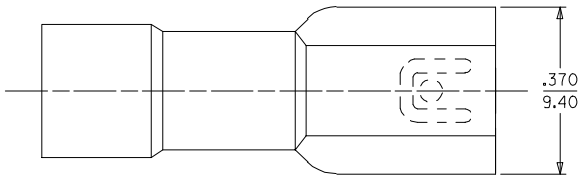
Sales Drawing

SD-19606-401

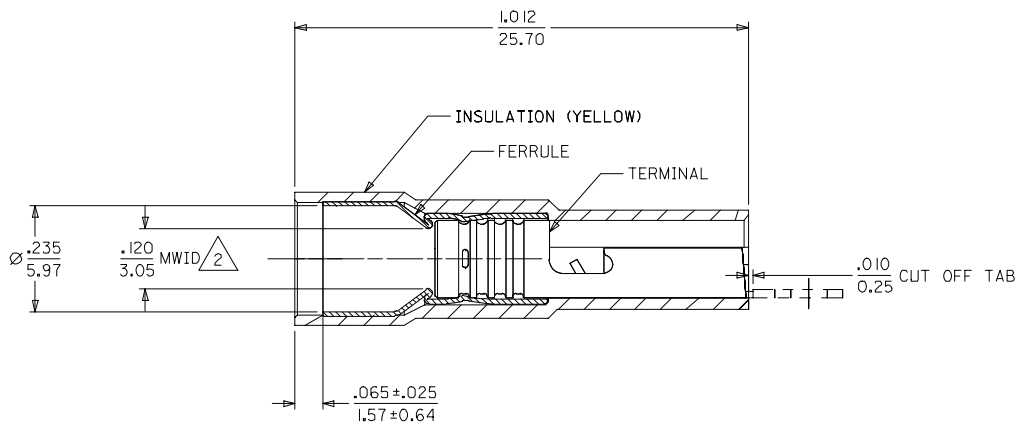
[Feedback](#) [Privacy](#) [Legal](#) [Site Map](#) [Help](#)

Copyright 2005-2008

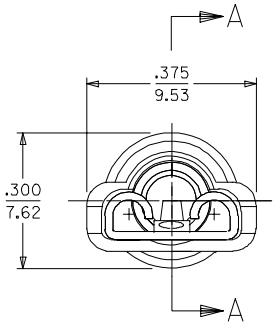
MATERIAL NUMBER	ENGINEERING NUMBER	CARRIER STYLE
196065005	19606-5005	LOOSE PIECE
196065006	19606-5006	TAPE MOUNT



PARTS ON TAPE



SECTION A-A
TERMINAL NOT SECTIONED



NOTES:
1. MATERIAL:
INSULATION: NYLON 94V2.
TERMINAL: TIN PLATED BRASS.
2. MWID = MAXIMUM WIRE INSULATION DIAMETER.

SALES DRAWING

WAS RSD DWG EC NO: ETC2005-0164 DRAWN BY: DRINKBENDERLE 2005/03/29 CHKDR: DEROSS 2005/04/01 APPR: DEROSS 2005/04/01	QUALITY SYMBOLS 	GENERAL TOLERANCES (UNLESS SPECIFIED)		DIMENSION STYLE		SCALE	DESIGN UNITS	THIRD ANGLE PROJECTION	
				IN/MM		5:1	INCH		
		4 PLACES	± .005	± .005	DRAWN BY	DATE	TITLE		
		3 PLACES	± .005	± .005	BRE	2005/03/15	FIQD FEMALE AVIKRIMP HIGH RETENTION .250 X.032 TAB 12-10 AWG		
2 PLACES	± 0.13	± .01	2 PLACES	± .01	R DEROSS	2005/03/15	MOLEX INCORPORATED		
1 PLACE	± 0.25	± .01	1 PLACE	± .01	R DEROSS	2005/03/15	SD-19606-401		
ANGULAR ± 1/2°		DRAFT WHERE APPLICABLE MUST REMAIN WITHIN DIMENSIONS		SEE CHART		DOCUMENT NO.		SHEET NO.	
				MATERIAL NO.		SD-19606-401		1 OF 1	
				SIZE C		THIS DRAWING CONTAINS INFORMATION THAT IS PROPRIETARY TO MOLEX INCORPORATED AND SHOULD NOT BE USED WITHOUT WRITTEN PERMISSION			