

MATERIAL: COPPER

Series image - Reference only

<p><u>EU RoHS</u> ELV and RoHS Compliant</p>	<p><u>China RoHS</u></p>
--	--------------------------

Search Parts in this Series

19160 Series

Application Tooling

Global

Description

Hand Crimp Tool

Crimp Head for the AT-200™ Pneumatic Hand Tool

Crimp Head for the AT-200™ Pneumatic Hand Tool, Crimp from Top

Product #

0640010600

0640050600

0640053400

Part Number: **0191600012**

Status: **Active**

Description: Closed-End Insulated Splice for 14-22 AWG Wire

Documents:

- [Drawing \(PDF\)](#)
- [Product Specification PS-19160-007 \(PDF\)](#)
- [Related Catalog Page \(PDF\)](#)

Order Products:

⌵

- [Check Distributor Inventory](#)
- [Request Samples](#)

⌵

○

Part Detail: [\(show all\)](#)○ **General**○ **Physical**○ **Electrical**○ **Material Info**○ **Reference - Drawing Numbers****General**

Product Family	Splices
Series	19160
Mil-Spec	N/A
Product Name	Closed-End Insulated

Physical

Barrel Type	Closed
Flammability	94 V2
Insulation	Nylon (PA)
Packaging Type	Box
Temperature Range - Operating	105°C
Wire Insulation Diameter	6.10mm (.240") max
Wire Size AWG	14
Wire Size AWG	16
Wire Size AWG	18
Wire Size AWG	20
Wire Size AWG	22

Electrical

CSA	LR18689
UL	E32244
Voltage - Maximum	300V

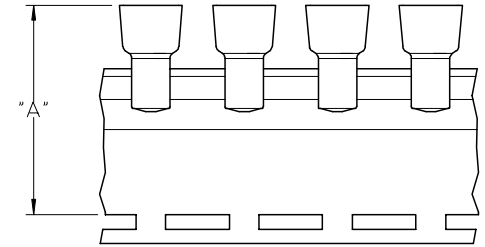
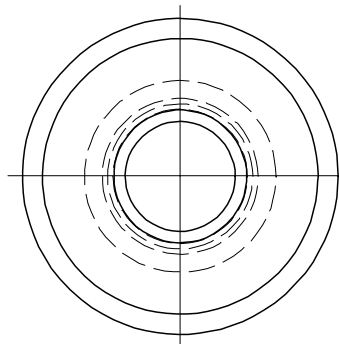
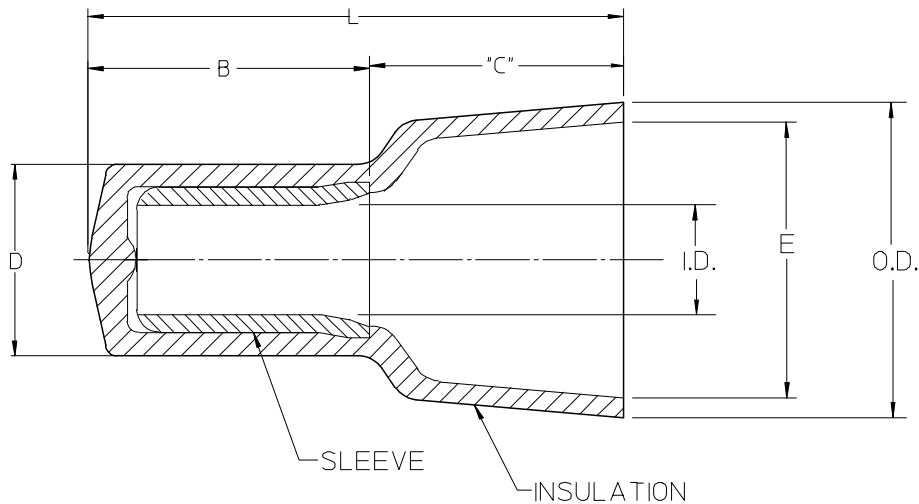
Material Info

Old Part Number	NC-2214
-----------------	---------

Reference - Drawing Numbers

Product Specification	PS-19160-007
Sales Drawing	SD-19160-001

10	9	8	7	6	5	4	3	2	19160				
LOOSE PIECE		TAPE MOUNTED		STANDARD BAG 100 PCS	ENGINEERING NUMBER	"L" MAX.	"B" ±.010/0.25	"D" MAX.	"E" MIN.	I.D. MIN.	O.D. MAX.	"A" DIM ±.015/0.38	"C" REF
MATERIAL NO.	ENG. NO.	MATERIAL NO.	ENG. NO.										
191600012	NC-2214	191600070	NC-2214T	191600171	NC-2214STD100	.61/15.5	.43/10.9	.19/4.8	.24/6.1	.09/2.3	.32/8.1	1.543/39.19	.180/4.57
191600009	NC-2212	191600071	NC-2212T	191600170	NC-2212STD100	.86/21.8	.37/9.4	.23/5.8	.27/6.9	.10/2.5	.36/9.1	1.631/41.43	.490/12.45
191600002	NC-1610	191600083	NC-1610T	191600169	NC-1610STD100	.90/22.8	.39/9.9	.28/7.1	.38/9.6	.15/3.8	.45/11.4	1.750/44.45	.510/12.95
191600024	NC-8	191600028	NC-8T	N/A	N/A	1.09/27.7	.43/10.9	.36/9.1	.48/12.2	.21/5.3	.57/14.5	1.864/47.35	.660/16.76



TAPE MOUNTING LOCATION

SALES DRAWING

NOTES:

- MATERIAL: SLEEVE: TIN PLATED COPPER
INSULATION: 6/6 NYLON
COLOR: NATURAL, TRANSLUCENT

ID DIM ERRORS EC NO: ETC2006-0022 TDRWN:DMYRICK 2005/08/15 CHKD:R.DERROSS 2005/08/15 APPR:R.DERROSS 2005/08/15	QUALITY SYMBOLS	GENERAL TOLERANCES (UNLESS SPECIFIED)	SCALE 5:1	DESIGN UNITS INCH	THIRD ANGLE PROJECTION	REVISE ON CAD ONLY
	DESCRIPTION	mm INCH	DIMENSION STYLE IN/MM		TITLE	
	REVISIONS	4 PLACES ± --- ± ---	DRAWN BY DATE H.BEITZE 04/02/23		CLOSED END CONNECTORS NYLON INSULATED	
		3 PLACES ± --- ± ---	CHECKED BY DATE R.DERROSS 04/02/23			
	2 PLACES ± --- ± ---	ANGULAR ± ---°		MOLEX INCORPORATED		
	1 PLACE ± --- ± ---	DRAFT WHERE APPLICABLE MUST REMAIN WITHIN DIMENSIONS		APPROVED BY DATE R.DERROSS 04/02/23	MATERIAL NO. SEE CHART	DOCUMENT NO. SD-19160-001
				THIS DRAWING CONTAINS INFORMATION THAT IS PROPRIETARY TO MOLEX INCORPORATED AND SHOULD NOT BE USED WITHOUT WRITTEN PERMISSION		SHEET NO. 1 OF 1