

Switch Language

English

Need Assistance?

- Contact Us
- Find a Distributor
- Order Samples
- Tech Library

Printer-friendly page

Email this page

[Home](#) [Splices](#) [Datasheet](#)

Part Number: 0191600009

Status: Active

Description: Closed-End Insulated Splice for 12-22 AWG Wire

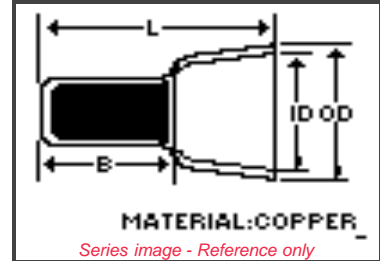
Documents:

Note - Please disable browser pop-up blockers for documents on www.molex.com

[Drawing \(PDF\)](#)

[Product Specification PS-19160-006 \(PDF\)](#)

[Related Catalog Page \(PDF\)](#)



Order Products:

[Check Distributor Inventory](#)

[Add to My Parts](#)

[Request Samples](#)

Part Detail: [\(show all\)](#)

[General](#) [Physical](#) [Electrical](#) [Material Info](#)

General

| | |
|----------------|----------------------|
| Product Family | Splices |
| Series | 19160 |
| Mil-Spec | N/A |
| Product Name | Closed-End Insulated |

Physical

| | |
|-------------------------------|--------------------|
| Barrel Type | Closed |
| Flammability | 94 V2 |
| Insulation | Nylon (PA) |
| Packaging Type | Bag |
| Temperature Range - Operating | 105°C |
| Wire Insulation Diameter | 6.86mm (.270") max |
| Wire Size AWG | 12 |
| Wire Size AWG | 14 |
| Wire Size AWG | 16 |
| Wire Size AWG | 18 |
| Wire Size AWG | 20 |
| Wire Size AWG | 22 |

Electrical

| | |
|-------------------|---------|
| CSA | LR18689 |
| UL | E32244 |
| Voltage - Maximum | 600V |

Material Info

| | |
|-----------------|---------|
| Old Part Number | NC-2212 |
|-----------------|---------|

Reference - Drawing Numbers

| | |
|-----------------------|--------------|
| Product Specification | PS-19160-006 |
| Sales Drawing | SD-19160-001 |

EU RoHS

ELV and RoHS Compliant

China RoHS



Need more information on product compliance?

Email productcompliance@molex.com

Please visit the [Contact Us](#) section for any non-product compliance questions.

Search Parts in this Series

[19160 Series](#)

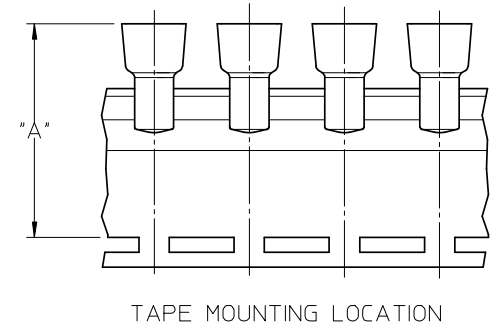
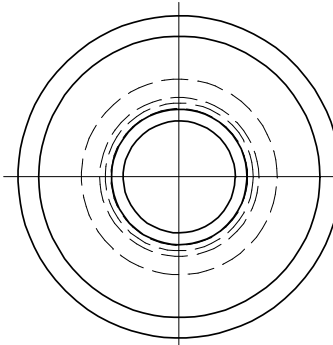
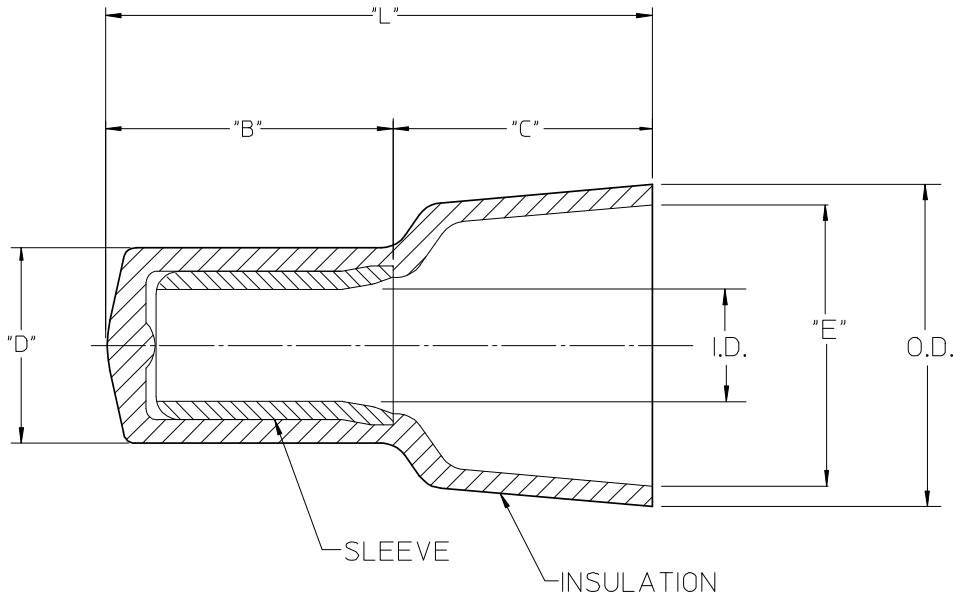
Application Tooling

Tooling specifications and manuals are found by selecting the products below. Crimp Height Specifications are then contained in the Application Tooling Specification document.

Global

| Description | Product # |
|--|----------------------------|
| Hand Crimp Tool | 0640010900 |
| Crimp Head for the AT-200™ Pneumatic Hand Tool | 0640050900 |
| Crimp Head for the AT-200™ Pneumatic Hand Tool | 0640053600 |

| LOOSE PIECE | | TAPE MOUNTED | | "L" MAX. | "B" ±.010/0.25 | "D" MAX. | "E" MIN. | I.D. MIN. | O.D. MAX. | "A" DIM ±.015/0.38 | "C" REF |
|--------------|----------|--------------|----------|------------------------|-----------------------|----------|----------|-----------|-----------|-----------------------|-----------------------|
| MATERIAL NO. | ENG. NO. | MATERIAL NO. | ENG. NO. | | | | | | | | |
| 191600012 | NC-2214 | 191600070 | NC-2214T | .62/15.7 [Ⓞ] | .33/8.4 [Ⓞ] | .19/4.8 | .24/6.1 | .09/2.3 | .32/8.1 | 1.543/39.19 | .28/7.1 [Ⓞ] |
| 191600009 | NC-2212 | 191600071 | NC-2212T | .76/19.3 [Ⓞ] | .35/8.9 [Ⓞ] | .23/5.8 | .27/6.9 | .10/2.5 | .36/9.1 | 1.631/41.43 | .39/9.9 [Ⓞ] |
| 191600002 | NC-1610 | 191600083 | NC-1610T | .90/22.8 | .39/9.9 | .28/7.1 | .38/9.6 | .15/3.8 | .45/11.4 | 1.750/44.45 | .51/13.0 |
| 191600024 | NC-8 | 191600028 | NC-8T | 1.10/27.9 [Ⓞ] | .50/12.7 [Ⓞ] | .36/9.1 | .48/12.2 | .21/5.3 | .57/14.5 | 1.864/47.35 | .60/15.2 [Ⓞ] |



NOTES:

- MATERIAL: SLEEVE: TIN-PLATED COPPER
INSULATION: 6/6 NYLON,
NATURAL TRANSLUCENT
- Ⓞ PARTS ARE ROHS COMPLIANT.

SALES DRAWING

| | | | | | | |
|---|-----------------|---|--------------------------------------|---|--|------------------------|
| CORRECT DIM ERRORS EC NO: WNA2008-0280 DRAWN BY: H.BEITZE CHKD: JMACNEIL APPR: JMACNEIL | QUALITY SYMBOLS | GENERAL TOLERANCES (UNLESS SPECIFIED) | DIMENSION STYLE | SCALE | DESIGN UNITS | THIRD ANGLE PROJECTION |
| | ▽=0 | mm INCH | IN/MM | 5:1 | INCH | |
| | ▽=0 | 4 PLACES ± --- ± --- 3 PLACES ± --- ± --- 2 PLACES ± --- ± --- 1 PLACE ± --- ± --- | DRAWN BY DATE H.BEITZE 04/02/23 | TITLE | CLOSED END CONNECTORS NYLON INSULATED | |
| | | ANGULAR ± ---° | CHECKED BY DATE R.DEROSS 04/02/23 | APPROVED BY DATE R.DEROSS 04/02/23 | MOLEX INCORPORATED | |
| | | DRAFT WHERE APPLICABLE MUST REMAIN WITHIN DIMENSIONS | SEE CHART | DOCUMENT NO. | SD-19160-001 | SHEET NO. 1 OF 1 |
| | | | SIZE B | THIS DRAWING CONTAINS INFORMATION THAT IS PROPRIETARY TO MOLEX INCORPORATED AND SHOULD NOT BE USED WITHOUT WRITTEN PERMISSION | | |