

Switch Language

English

Need Assistance?

[Contact Us](#)
[Find a Distributor](#)
[Order Samples](#)
[Tech Library](#)

[Printer-friendly page](#)

[Email this page](#)

[Home](#) [Quick Disconnects](#) [Datasheet](#)

Part Number: 0190220004

Status: Active

Description: Krimptite™ Quick Disconnect, Male, for 18-22 (0.80-0.35) Wire, Box, Tab 6.35mm (.250") x 0.81mm (.032")

Documents:

Note - Please disable browser pop-up blockers for documents on www.molex.com
[Drawing \(PDF\)](#) [Related Catalog Page \(PDF\)](#)

Order Products:

[Check Distributor Inventory](#) [Add to My Parts](#)
[Request Samples](#)

Part Detail: ([show all](#))

[General](#) [Physical](#) [Electrical](#) [Material Info](#)

General

Product Family	Quick Disconnects
Series	<u>19022</u>
Comments	Economical
Product Name	Krimptite™
Type	Quick Disconnect

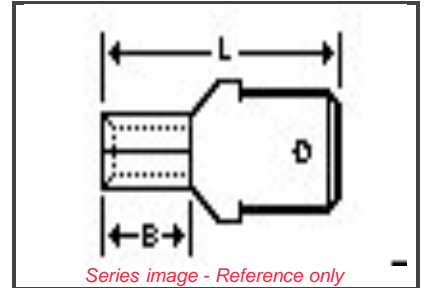
Physical

Barrel Type	Closed
Gender	Male
Insulation	None
Lock to Mating Part	None
Material - Metal	Copper
Material - Plating Mating	Gold
Material - Plating Termination	90/10 Tin Lead
Material - Plating Termination	90/10 Tin-Lead
Orientation	Straight
Packaging Type	Bag
Plating min: Mating (uin)	30
Plating min: Mating (um)	0.75
Plating min: Termination (uin)	160
Plating min: Termination (um)	4
Polarized to Mating Part	No
Tab Thickness	0.81mm (.032")
Tab Width	6.35mm (.250")
Temperature Range - Operating	Per Wire Specification
Wire Size AWG	18
Wire Size AWG	20
Wire Size AWG	22
Wire Size mm²	0.35 - 0.80

Electrical

CSA	LR18689
UL	E79133
Voltage - Maximum	PER WIRE SPECIFICATION

Material Info



EU RoHS **China RoHS**
ELV and RoHS Compliant



Need more information on product compliance?

Email productcompliance@molex.com

Please visit the [Contact Us](#) section for any non-product compliance questions.

Search Parts in this Series

19022 Series

Application Tooling

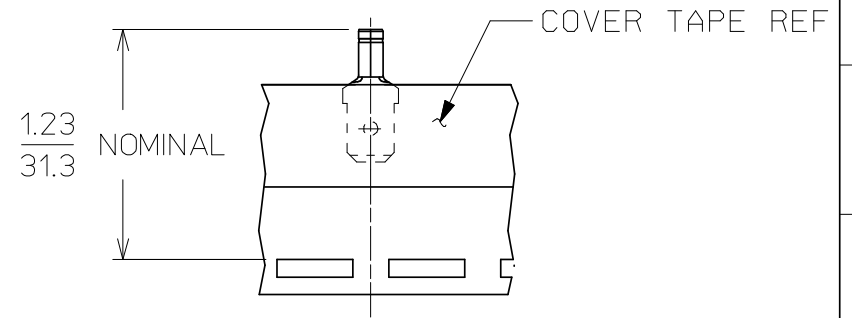
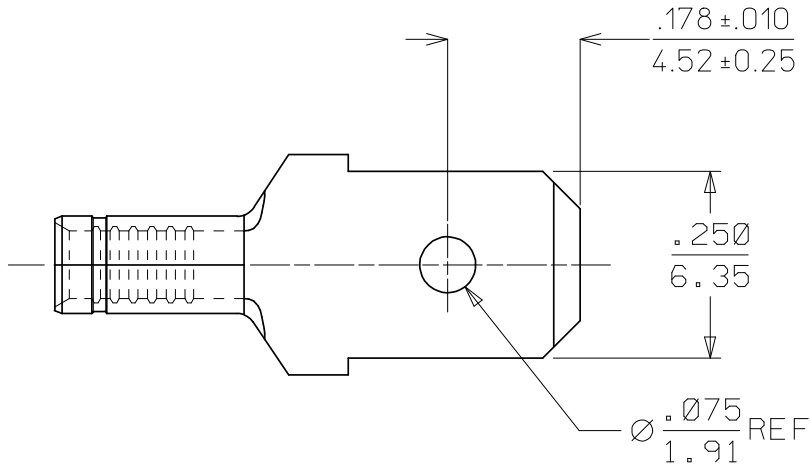
Tooling specifications and manuals are found by selecting the products below. Crimp Height Specifications are then contained in the Application Tooling Specification document.

Global

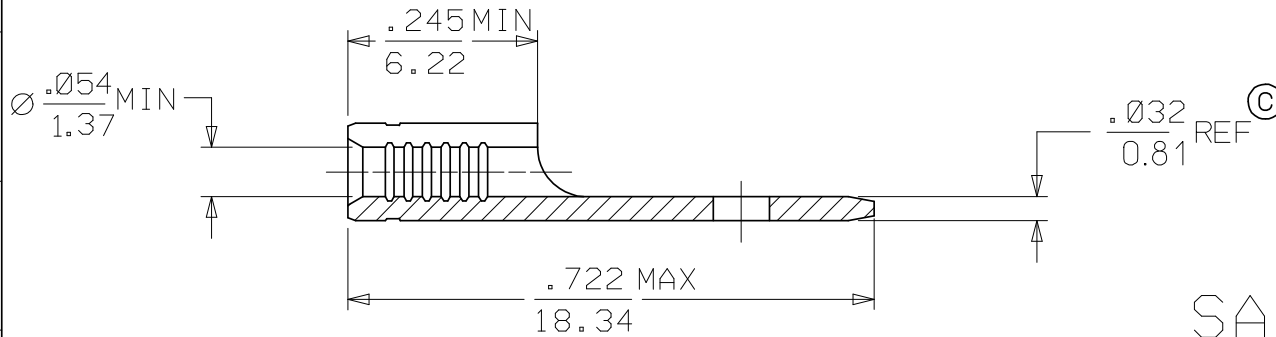
Description	Product #
Hand Crimp Tool	0640030100
Hand Crimp Tool	0640031200
Crimp Head for the AT-200™ Pneumatic Hand Tool	0640070100
Crimp Head for the AT-200™ Pneumatic Hand Tool	0640071200

Old Part Number	AMCT-1
Reference - Drawing Numbers	
Sales Drawing	SD-19022-006

13	12	11	10	9	8	7	6	5	4	3	2	1
MATERIAL NUMBER		ENGINEERING NUMBER	DESCRIPTION									
190220004		AMCT-I	ZINC CHROMATE PLATED									
190220010		AMCT-IT	ZINC CHROMATE PLATED, TAPE MOUNTED									



TAPE MOUNTING LOCATION FOR 190220010, AMCT-1T



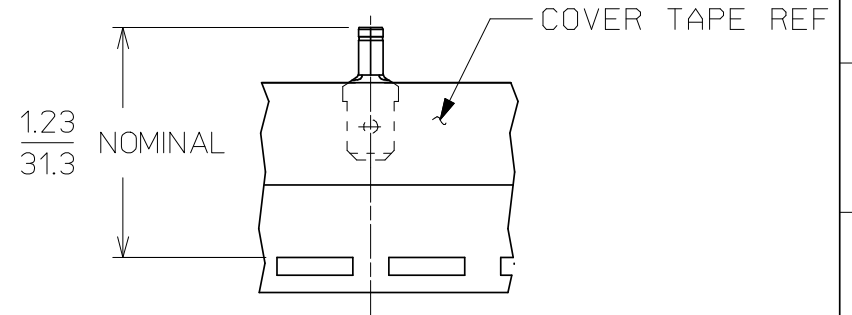
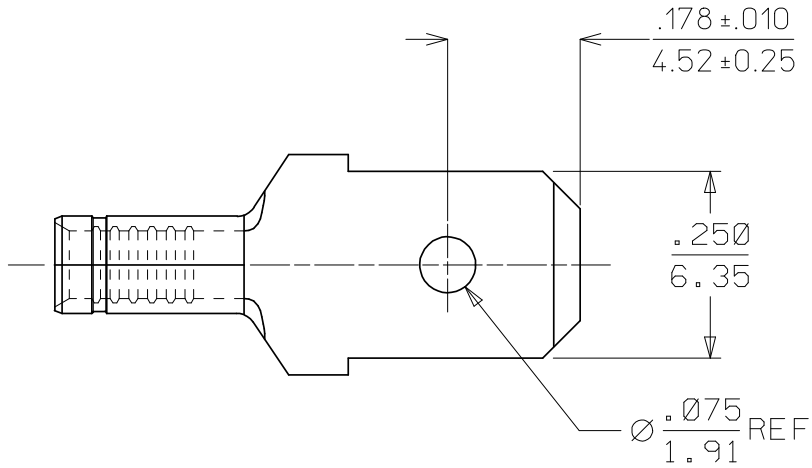
SALES DRAWING

NOTES:

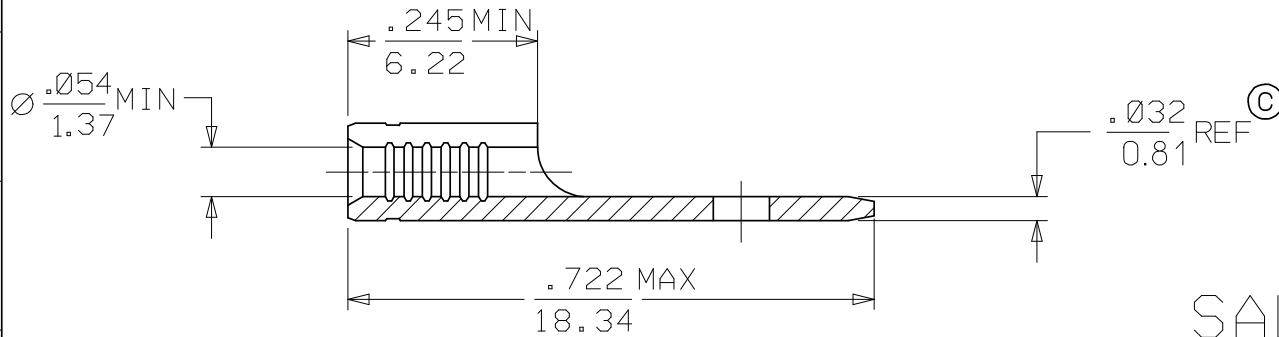
1. MATERIAL: BRASS ©
2. FINISH: SEE CHART
3. WIRE SIZE: 22-18 AWG (0.38 - 0.96 mm²)
4. TAB DIMENSIONS CONFORM TO UL310 SPECIFICATIONS.
5. PART IS ROHS COMPLIANT. ©

CHANGED MATL & FINISH EC NO: ETC2007-0081 DRAWN: HILE 2008/01/28 CHKD: JMACNEIL 2008/01/28 APPR: JMACNEIL 2008/02/13	QUALITY SYMBOLS	GENERAL TOLERANCES (UNLESS SPECIFIED)	DIMENSION STYLE	SCALE	DESIGN UNITS	THIRD ANGLE PROJECTION	
	▼=0 ▽=0	mm INCH	IN/MM	4:1	INCH		
		4 PLACES ± --- ± --- 3 PLACES ± --- ± .005 2 PLACES ± 0.13 ± .01 1 PLACE ± 0.25 ± ---	DRAWN BY DATE BRE 1/07/02			TITLE	MALE CONNECTOR TERMINAL .250 X .032 TAB KRIMPTITE
		ANGULAR ± 1/2°	CHECKED BY DATE HEB 1/07/02			MOLEX MOLEX INCORPORATED	
		DRAFT WHERE APPLICABLE MUST REMAIN WITHIN DIMENSIONS	APPROVED BY DATE RWD 1/07/02			DOCUMENT NO. SD-19022-006	SHEET NO. 1 OF 1
			SEE CHART				
			SIZE	THIS DRAWING CONTAINS INFORMATION THAT IS PROPRIETARY TO MOLEX INCORPORATED AND SHOULD NOT BE USED WITHOUT WRITTEN PERMISSION			

13	12	11	10	9	8	7	6	5	4	3	2	1
MATERIAL NUMBER		ENGINEERING NUMBER	DESCRIPTION									
190220004		AMCT-I	ZINC CHROMATE PLATED									
190220010		AMCT-IT	ZINC CHROMATE PLATED, TAPE MOUNTED									



TAPE MOUNTING LOCATION FOR 190220010, AMCT-1T



SALES DRAWING

NOTES:

1. MATERIAL: BRASS ©
2. FINISH: SEE CHART
3. WIRE SIZE: 22-18 AWG (0.38 - 0.96 mm²)
4. TAB DIMENSIONS CONFORM TO UL310 SPECIFICATIONS.
5. PART IS ROHS COMPLIANT. ©

CHANGED MATL & FINISH EC NO: ETC2007-0081 DRAWN: HEILE 2008/01/28 CHKD: JMACNEIL 2008/01/28 APPR: JMACNEIL 2008/02/13	QUALITY SYMBOLS	GENERAL TOLERANCES (UNLESS SPECIFIED)	DIMENSION STYLE	SCALE	DESIGN UNITS	THIRD ANGLE PROJECTION															
	$\nabla=0$ $\nabla=0$	<table border="1"> <tr> <th></th> <th>mm</th> <th>INCH</th> </tr> <tr> <td>4 PLACES</td> <td>±.005</td> <td>±.0005</td> </tr> <tr> <td>3 PLACES</td> <td>±.005</td> <td>±.0005</td> </tr> <tr> <td>2 PLACES</td> <td>±.013</td> <td>±.001</td> </tr> <tr> <td>1 PLACE</td> <td>±.025</td> <td>±.001</td> </tr> </table>		mm	INCH	4 PLACES	±.005	±.0005	3 PLACES	±.005	±.0005	2 PLACES	±.013	±.001	1 PLACE	±.025	±.001	IN/MM	4:1	INCH	
		mm	INCH																		
	4 PLACES	±.005	±.0005																		
3 PLACES	±.005	±.0005																			
2 PLACES	±.013	±.001																			
1 PLACE	±.025	±.001																			
DESCRIPTION	<table border="1"> <tr> <th>APPROVED BY</th> <th>DATE</th> </tr> <tr> <td>HEB</td> <td>1/07/02</td> </tr> <tr> <th>APPROVED BY</th> <th>DATE</th> </tr> <tr> <td>RWD</td> <td>1/07/02</td> </tr> </table>	APPROVED BY	DATE	HEB	1/07/02	APPROVED BY	DATE	RWD	1/07/02	<table border="1"> <tr> <th>DRAWN BY</th> <th>DATE</th> </tr> <tr> <td>BRE</td> <td>1/07/02</td> </tr> <tr> <th>CHECKED BY</th> <th>DATE</th> </tr> <tr> <td>HEB</td> <td>1/07/02</td> </tr> </table>	DRAWN BY	DATE	BRE	1/07/02	CHECKED BY	DATE	HEB	1/07/02	TITLE	MALE CONNECTOR TERMINAL .250 X .032 TAB KRIMPTITE	
APPROVED BY	DATE																				
HEB	1/07/02																				
APPROVED BY	DATE																				
RWD	1/07/02																				
DRAWN BY	DATE																				
BRE	1/07/02																				
CHECKED BY	DATE																				
HEB	1/07/02																				
REV		DRAFT WHERE APPLICABLE MUST REMAIN WITHIN DIMENSIONS	SEE CHART	MATERIAL NO.	DOCUMENT NO.	SHEET NO.															
					SD-19022-006	1 OF 1															
THIS DRAWING CONTAINS INFORMATION THAT IS PROPRIETARY TO MOLEX INCORPORATED AND SHOULD NOT BE USED WITHOUT WRITTEN PERMISSION																					