

Series image - Reference only

EU RoHS	China RoHS				
ELV and RoHS Compliant					
<p>Search Parts in this Series 19008 Series</p> <p>Application Tooling</p> <hr/> <p>Global</p> <table border="1"><thead><tr><th data-bbox="451 1186 682 1228">Description</th><th data-bbox="682 1186 844 1228">Product #</th></tr></thead><tbody><tr><td data-bbox="451 1228 682 1270">Hand Crimp Tool</td><td data-bbox="682 1228 844 1270">0640030700</td></tr></tbody></table>		Description	Product #	Hand Crimp Tool	0640030700
Description	Product #				
Hand Crimp Tool	0640030700				

Part Number: **0190080038**

Status: **Active**

Description: Flag Krimptite™ Quick Disconnect, Female, for 12-14 (3.30-2.00) Wire, Box, Tab 6.35mm (.250") x 0.81mm (.032")

Documents:

- [Drawing \(PDF\)](#)
- [Related Catalog Page \(PDF\)](#)

Order Products:

- [Check Distributor Inventory](#)
- [Request Samples](#)

Part Detail: [\(show all\)](#)

- **General**
- **Physical**
- **Electrical**
- **Material Info**
- **Reference - Drawing Numbers**

General

Product Family	Quick Disconnects
Series	<u>19008</u>
Comments	Fits Hermetic Tabs
Product Name	Krimptite™
Type	Quick Disconnect

Physical

Barrel Type	Closed
Gender	Female
Insulation	None
Lock to Mating Part	None
Orientation	Flag
Packaging Type	Box
Polarized to Mating Part	No
Tab Thickness	0.81mm (.032")
Tab Width	6.35mm (.250")
Temperature Range - Operating	Per Wire Specification
Wire Size AWG	12
Wire Size AWG	14
Wire Size mm ²	2.00 - 3.30

Electrical

Voltage - Maximum	PER WIRE SPECIFICATION
-------------------	------------------------

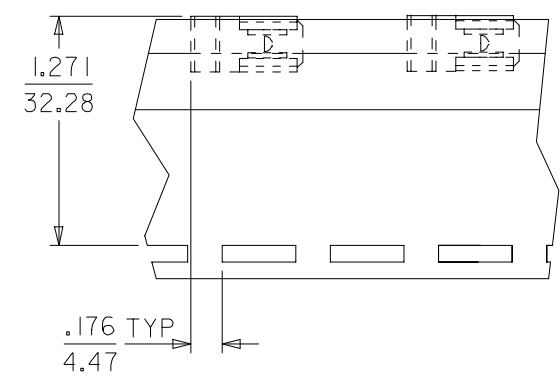
Material Info

Old Part Number	B-175
-----------------	-------

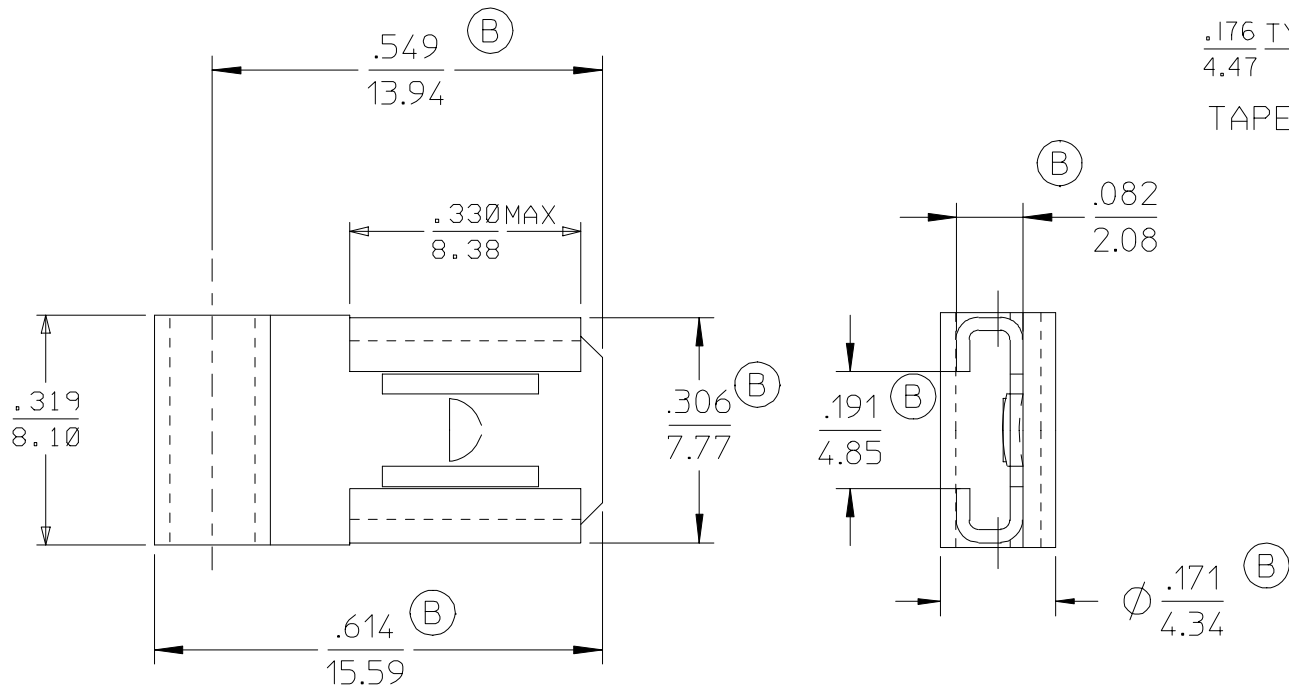
Reference - Drawing Numbers

Sales Drawing	SD-19008-009
---------------	--------------

6	5	4	3	2	1
MATERIAL NUMBER	ENGINEERING NUMBER	PLATING	CARRIER		
190080062	B-175P	NON-PLATED	LOOSE PIECE		
190080038	B-175	TIN PLATED	LOOSE PIECE		
190080039	B-175T	TIN PLATED	TAPE		



TAPE MOUNTING LOCATION



SALES DRAWING

- NOTES:
- MATERIAL: BRASS
 - PLATING SEE CHART.
 - RoHS COMPLIANT

CORRECT DIMS EC NO: ETC2007-0146 DRWN: JLOMASTRO 2006/10/11 CHKD: JMACNEIL 2006/10/11 APPR: JMACNEIL 2006/10/12 B	QUALITY SYMBOLS 	GENERAL TOLERANCES (UNLESS SPECIFIED)		DIMENSION STYLE IN/MM		SCALE	DESIGN UNITS INCH	THIRD ANGLE PROJECTION	
			mm	INCH	DRAWN BY	DATE	TITLE	MOLEX INCORPORATED	DOCUMENT NO.
		4 PLACES	± ---	± ---	JLOMASTRO	10/07/06			
		3 PLACES	± ---	± .010	CHECKED BY	DATE			
2 PLACES	± 0.25	± .010	JMACNEIL	10/07/06					
1 PLACE	± 0.3	± ---	APPROVED BY	DATE					
			ANGULAR ± ---°		JMACNEIL	10/07/06			
		DRAFT WHERE APPLICABLE MUST REMAIN WITHIN DIMENSIONS		SEE CHART					
		SIZE	THIS DRAWING CONTAINS INFORMATION THAT IS PROPRIETARY TO MOLEX INCORPORATED AND SHOULD NOT BE USED WITHOUT WRITTEN PERMISSION						