

Series image - Reference only

EU RoHS ELV and RoHS Compliant	China RoHS
-----------------------------------	------------

**Search Parts in this Series**

[19005 Series](#)

**Use With**

[19004-0001](#), [19004-0004](#)

**Application Tooling**

**Global**

**Description**

Hand Crimp Tool

Crimp Head for the AT-200™ Pneumatic Hand Tool

**Product #**

[0640014700](#)

[0640054700](#)

**Part Number:** **0190050001**

**Status:** **Active**

**Description:** InsulKrimp™ Fully Insulated Coupler, Female, for 18-22 AWG Wire, Box

**Documents:**

- [Drawing \(PDF\)](#)
- [Product Specification PS-19902-008 \(PDF\)](#)
- [Related Catalog Page \(PDF\)](#)

**Order Products:**

- [Check Distributor Inventory](#)
- [Request Samples](#)

**Part Detail: [\(show all\)](#)**

- **General**
- **Physical**
- **Electrical**
- **Material Info**
- **Reference - Drawing Numbers**

**General**

Product Family	Quick Disconnects
Series	<u>19005</u>
Product Name	InsulKrimp™
Type	Quick Disconnect

**Physical**

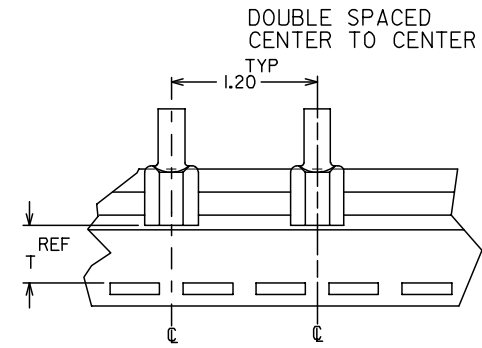
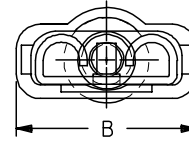
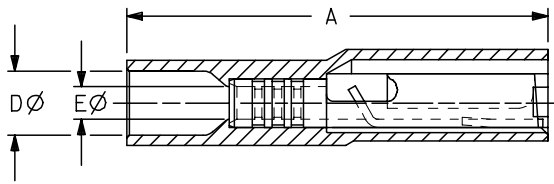
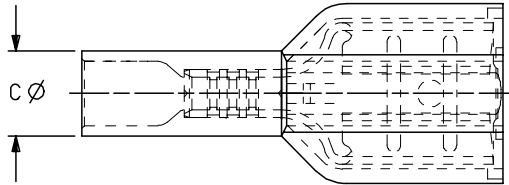
Barrel Type	Closed
Color - Resin	Natural
Flammability	94 V0
Gender	Female
Insulation	Nylon (PA)
Lock to Mating Part	None
Material - Metal	Brass
Material - Resin	Nylon
Orientation	Straight
Packaging Type	Box
Polarized to Mating Part	No
Tab Thickness	0.81mm (.032")
Tab Width	6.35mm (.250")
Temperature Range - Operating	-65°C to +105°C
Wire Insulation Diameter	4.19mm (.165") max.
Wire Size AWG	18
Wire Size AWG	20
Wire Size AWG	22
Wire Size mm <sup>2</sup>	0.35 - 0.80

**Electrical**

CSA	LR18689
UL	E79133
Voltage - Maximum	600V

10	9	8	7	6	5	4	3	2					
MATERIAL NO. LOOSE PC	ENGINEERING NO. LOOSE PC	MATERIAL NO. ON TAPE	ENGINEERING NO. ON TAPE	WIRE SIZE	ACCEPTS TAB SIZE	COLOR	STOCK THICKNESS	A MAX	B MAX	C MAX	D MWID	E MIN	T REF
190050001	AA-2261	190050004	AA-2261T	22-18	.250x.032	RED	.018	.89	.38	.23	.165	.083	.520
190050005	BB-2263	190050009	BB-2263T	16-14	.250x.032	BLUE	.018	.89	.38	.23	.165	.083	.520
190050010	C-2265	190050015	C-2265T	12-10	.250x.032	YELLOW	.018	1.04	.38	.34	.275	.145	.508

(B)



TAPE MOUNTING DETAIL

NOTES:

1. TERMINAL MATERIAL: BRASS
2. TERMINAL FINISH: TIN PLATED
3. INSULATION MATERIAL: MOLDED NYLON
4. MWID = MAXIMUM WIRE INSULATION DIAMETER
5. ASSEMBLY IS ROHS COMPLIANT.

(B)

REDRAWN & REVISED EC NO: ETC2007-0281 DRW: WHEHLE 2007/02/06 CHKD: JMACNEIL 2007/02/06 APPR: JMACNEIL 2007/02/06	QUALITY SYMBOLS ▽=0 ▽=0	GENERAL TOLERANCES (UNLESS SPECIFIED)		DIMENSION STYLE INCH ONLY		SCALE ---	DESIGN UNITS INCH	THIRD ANGLE PROJECTION		
		4 PLACES ± --- ± ---	3 PLACES ± --- ± .005	2 PLACES ± --- ± .01	1 PLACE ± --- ± ---	ANGULAR ±1/2°	DRAWN BY EMF DATE 1993/06/25	CHECKED BY --- DATE ---	TITLE FULLY INSULATED FEMALE COUPLER	
		DRAFT WHERE APPLICABLE MUST REMAIN WITHIN DIMENSIONS				SIZE B	APPROVED BY --- DATE ---	MATERIAL NO. SEE CHART	DOCUMENT NO. SD-19005-001	SHEET NO. 1 OF 1
		THIS DRAWING CONTAINS INFORMATION THAT IS PROPRIETARY TO MOLEX INCORPORATED AND SHOULD NOT BE USED WITHOUT WRITTEN PERMISSION								