

Switch Language

English

Need Assistance?

- [Contact Us](#)
- [Find a Distributor](#)
- [Order Samples](#)
- [Tech Library](#)

Printer-friendly page

Email this page

[Home](#)   [Crimp Housings](#)   [Datasheet](#)

**Part Number:** 0009507051

**Status:** Active   **Overview:** [KK®](#)

**Description:** 3.96mm (.156") Pitch KK® Crimp Terminal Housing, 5 Circuits

**Documents:**

*Note - Please disable browser pop-up blockers for documents on www.molex.com*

- [Drawing \(PDF\)](#)
- [Product Specification PS-08-50 \(PDF\)](#)
- [3D Model](#)
- [Related Catalog Page \(PDF\)](#)



**Order Products:**

- [Check Distributor Inventory](#)
- [Add to My Parts](#)
- [Request Samples](#)

**Part Detail:** [\(show all\)](#)

- [General](#)
- [Physical](#)
- [Electrical](#)
- [Material Info](#)

**General**

Product Family	Crimp Housings
Series	<a href="#">2139</a>
Overview	<a href="#">KK®</a>
Product Name	KK®

**Physical**

Circuits (maximum)	5
Color - Resin	Natural
Flammability	94V-2
Gender	Female
Material - Resin	Nylon
Number of Rows	1
Packaging Type	Bag
Panel Mount	No
Pitch - Mating Interface (in)	0.156 In
Pitch - Mating Interface (mm)	3.96 mm
Temperature Range - Operating	0°C to +75°C

**Electrical**

CSA	LR19980
UL	E29179

**Material Info**

Old Part Number	2139-5C
-----------------	---------

**Reference - Drawing Numbers**

Product Specification	PS-08-50
Sales Drawing	SD-2139

**EU RoHS**  
**ELV and RoHS Compliant**



**Need more information on product compliance?**

Email [productcompliance@molex.com](mailto:productcompliance@molex.com)

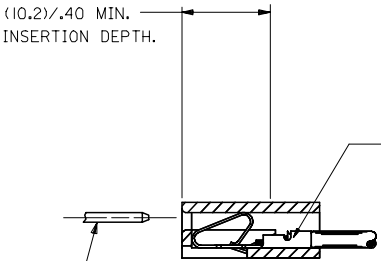
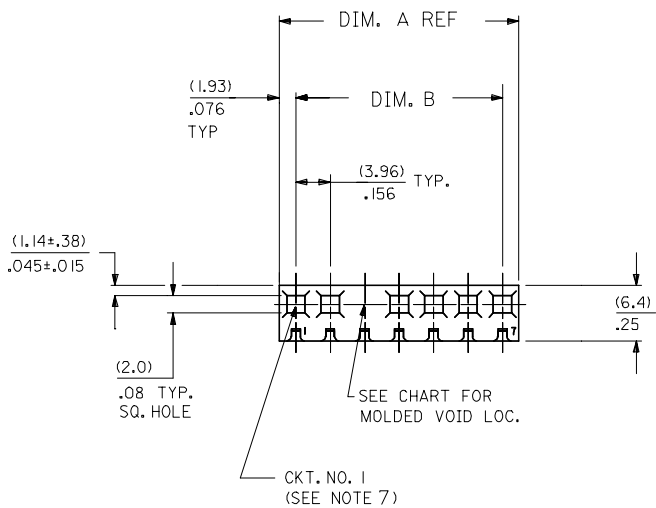
Please visit the [Contact Us](#) section for any non-product compliance questions.

**Search Parts in this Series**

[2139 Series](#)

**Use With**

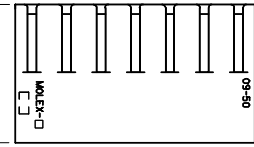
[2478](#) Crimp Terminals for 18-24 AWG, [2578](#) Crimp Terminals for 22-26 AWG



TERMINAL SHOWN FOR REF. ONLY

(1.14)±.045 SQ. OR ROUND PIN IS STANDARD. HOUSING WILL ACCEPT PIN SIZES FROM (.51)±.020 TO (1.57)±.062

DIM. A	DIM. B	NO. OF
(7.82)	(3.96±.13)	2
.308	.156±.005	
(11.79)	(7.92±.13)	3
.464	.312±.005	
(15.75)	(11.89±.13)	4
.620	.468±.005	
(19.71)	(15.85±.13)	5
.776	.624±.005	
(23.67)	(19.81±.13)	6
.932	.780±.005	
(27.64)	(23.77±.13)	7
1.088	.936±.005	
(31.60)	(27.74±.25)	8
1.244	1.092±.010	
(35.56)	(31.70±.25)	9
1.400	1.248±.010	
(39.52)	(35.66±.25)	10
1.556	1.404±.010	
(43.48)	(39.62±.25)	11
1.712	1.560±.010	
(47.45)	(43.59±.25)	12
1.868	1.716±.010	
(51.41)	(47.55±.31)	13
2.024	1.872±.012	
(55.37)	(51.51±.36)	14
2.180	2.028±.014	
(59.33)	(55.47±.36)	15
2.336	2.184±.014	
(63.30)	(59.44±.36)	16
2.492	2.340±.014	
(67.26)	(63.40±.36)	17
2.648	2.496±.014	
(71.22)	(67.36±.36)	18
2.804	2.652±.014	
(75.18)	(71.32±.36)	19
2.960	2.808±.014	
(79.15)	(75.29±.36)	20
3.116	2.964±.014	
(83.11)	(79.25±.46)	21
3.272	3.120±.018	
(87.07)	(83.21±.46)	22
3.428	3.276±.018	
(91.03)	(87.17±.46)	23
3.584	3.432±.018	
(95.00)	(91.14±.46)	24
3.740	3.588±.018	



OPT. CODE	RAMP	POL. RIB	EARS	MATERIAL	ENGRAVING	PACKAGING
A	STD. RAMP	NO	NO	NYLON 94V-2	STD.	PK-2139-001
C	NONE	NO	NO	NYLON 94V-2	STD.	PK-2139-002
G	WIDE RAMP	NO	NO	NYLON 94V-2	STD.	PK-2139-001
M	STD. RAMP	NO	NO	NYLON 6 94V-2	STD.	TBD-INDIA
N	NONE	NO	NO	NYLON 6 94V-2	STD.	TBD-INDIA
P	STD. RAMP	YES	NO	NYLON 94V-2	STD.	TBD SINGAPORE

NO. OF CKT'S. 2 139-N \*\*\* - \*\*\* - \*\*\*

SELECTIVE RAMP LOC.  
 BLANK-NONE  
 AA=1ST. SEL. LOC.  
 AB=2ND. SEL. LOC., ETC.

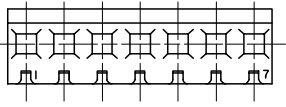
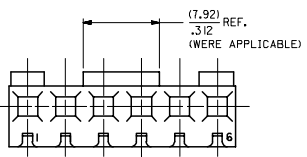
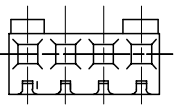
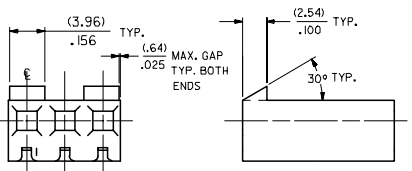
VOID CODE  
 NO. CORRESPONDS TO CKT. NO. VOIDED.  
 MULT. VOIDS START WITH 51.

COLOR CODE  
 BLANK=NATURAL  
 GN=GREEN  
 YW=YELLOW  
 RD=RED  
 OR=ORNANGE  
 BU=BLUE  
 BK=BLACK

- NOTES:
- MATERIAL: SEE LEGEND.
  - FINISH: N/A
  - PARTS CONFORM TO PRODUCT SPECIFICATION PS-08-50.
  - PACKAGING INFORMATION: SEE LEGEND
  - THIS HOUSING FOR USE WITH TERMINAL NO. 2478 (18 TO 24 GA) & 2578 (22 TO 26 GA), WITH (2.54)±.100 MAX. INSULATION DIA. HOUSING 41695 IS RECOMMENDED FOR OVER (2.54)±.100 DIA. INSULATION.
  - DIMENSIONS GIVEN ACROSS CENTERLINES ARE SYMMETRICAL ABOUT THOSE CENTERLINES WITHIN HALF THE TOTAL TOLERANCE.
  - FIRST CKT. NO. ON 1 THRU 5 CKT. HOUSINGS, FIRST AND LAST CKT. NO. ON 6 CKT HOUSING AND LARGER.
  - MAX BOW .005 MM/MM OR .005 IN/IN
  - 2139-NP-\* IS MANUFACTURED IN SINGAPORE ONLY.

UPDATE PER ECN ECN NO: UCP2006-0451 2005/11/09 DRAWN: JUNE 2005/12/12 CHECKED: JUNE 2005/12/12 APPROVED: JUNE 2005/12/12 APPROVED: JUNE 2005/12/12	QUALITY SYMBOLS ▽=0 ▽=0	GENERAL TOLERANCES (UNLESS SPECIFIED) <table border="1"> <tr><th></th><th>mm</th><th>INCH</th></tr> <tr><td>4 PLACES ±</td><td>±.010</td><td>±.0004</td></tr> <tr><td>3 PLACES ±</td><td>±.010</td><td>±.0004</td></tr> <tr><td>2 PLACES ±</td><td>±.025</td><td>±.010</td></tr> <tr><td>1 PLACE ±</td><td>±0.36</td><td>±.014</td></tr> <tr><td colspan="3">ANGULAR ±1/2°</td></tr> </table>		mm	INCH	4 PLACES ±	±.010	±.0004	3 PLACES ±	±.010	±.0004	2 PLACES ±	±.025	±.010	1 PLACE ±	±0.36	±.014	ANGULAR ±1/2°			DIMENSION STYLE MM/IN	SCALE ---	DESIGN UNITS INCH	THIRD ANGLE PROJECTION
		mm	INCH																					
	4 PLACES ±	±.010	±.0004																					
	3 PLACES ±	±.010	±.0004																					
2 PLACES ±	±.025	±.010																						
1 PLACE ±	±0.36	±.014																						
ANGULAR ±1/2°																								
DRAWN BY SAMIEC 1986/01/17	CHECKED BY PATEL 1986/01/17	APPROVED BY LENZ 1986/01/07	MATERIAL NO. SEE CHART	DOCUMENT NO. SD-2139	TITLE CONNECTOR HOUSING .156 CL CRIMP TERMINAL 2139 SERIES DWG.	SHEET NO. 1 OF 4																		
DRAFT WHERE APPLICABLE MUST REMAIN WITHIN DIMENSIONS																								
THIS DRAWING CONTAINS INFORMATION THAT IS PROPRIETARY TO MOLEX INCORPORATED AND SHOULD NOT BE USED WITHOUT WRITTEN PERMISSION																								

20 19 18 17 16 15 14 13 12 11 10 9 8 7 6 5 4 3 2 1



NO. OF CKT'S.	STANDARD RAMP IS LOCATED ON % OF CKT. NOS.
2	ACROSS ENTIRE PART
3	1,3
4	1,4
5	1,3,5
6	1,3,4,6
7	ACROSS ENTIRE PART
8	1,3,6,8
9	ACROSS ENTIRE PART
10	1,3,5,6,8,10
11	ACROSS ENTIRE PART
12	1,3,5,8,10,12
13	1,3,5,7,9,11,13
14	1,3,5,7,8,10,12,14
15	1,3,5,7,9,11,13,15
16	1,3,5,7,10,12,14,16
17	1,3,5,7,9,11,13,15,17
18	1,3,5,7,9,10,12,14,16,18
19	1,3,5,7,9,11,13,15,17,19
20	1,3,5,7,9,12,14,16,18,20
21	1,3,5,7,9,11,13,15,17,19,21
22	1,3,5,7,9,11,12,14,16,18,20,22
23	1,3,5,7,9,11,13,15,17,19,21,23
24	1,3,5,7,9,11,14,16,18,20,22,24

STD. RAMP OPTION  
SEE CHART FOR RAMP LOCATIONS.

2139-NA-*			2139-NC-*		
ORDER NO.	ENG. NO.	VOIDS	ORDER NO.	ENG. NO.	VOIDS
09-50-3021	2139-2A		09-50-7021	2139-2C	
09-50-3031	2139-3A		09-50-7031	2139-3C	
09-50-3041	2139-4A		09-50-7041	2139-4C	
09-50-3051	2139-5A		09-50-7051	2139-5C	
09-50-3061	2139-6A		09-50-7061	2139-6C	
09-50-3071	2139-7A		09-50-7071	2139-7C	
09-50-3081	2139-8A		09-50-7081	2139-8C	
09-50-3091	2139-9A		09-50-7091	2139-9C	
09-50-3101	2139-10A		09-50-7101	2139-10C	
09-50-3111	2139-11A		09-50-7111	2139-11C	
09-50-3121	2139-12A		09-50-7121	2139-12C	
09-50-3131	2139-13A		09-50-7131	2139-13C	
09-50-3141	2139-14A		09-50-7141	2139-14C	
09-50-3151	2139-15A		09-50-7151	2139-15C	
09-50-3161	2139-16A		09-50-7161	2139-16C	
09-50-3171	2139-17A		09-50-7171	2139-17C	
09-50-3181	2139-18A		09-50-7181	2139-18C	
09-50-3191	2139-19A		09-50-7191	2139-19C	
09-50-3201	2139-20A		09-50-7201	2139-20C	
09-50-3211	2139-21A		09-50-7211	2139-21C	
09-50-3221	2139-22A		09-50-7221	2139-22C	
09-50-3231	2139-23A		09-50-7231	2139-23C	
09-50-3241	2139-24A		09-50-7241	2139-24C	
09-50-3036	2139-3A-2	2	09-50-7117	2139-11C-51	2,7,10
	2139-10A-2	2	09-50-7166	2139-16C-2	2
	2139-10A-51	2,5	09-50-7106	2139-10C-2	2
	2139-7A-2	2	09-50-7107	2139-10C-51	2,5
	2139-11A-51	2,7,10	09-50-7076	2139-7C-2	2
09-50-3163	2139-16A-2	2		2139-4C-3	3
09-50-3073	2139-10A-7	7	T 09-50-7108	2139-10C-4	4
09-50-3083	2139-10A-8	8	T 09-50-7109	2139-10C-5	5
09-50-3104	2139-10A-9	9		2139-5C-2	2
09-50-3162	2139-16A-51	2,15	09-50-3077	2139-7C-3	3
09-50-3092	2139-9A-51	2,6	09-50-3078	2139-7C-5	5
09-50-3075	2139-7A-51	1,7	09-50-7142	2139-14C-5	5
	2139-7A-6	6			
	2139-5A-51	2,4			
09-50-3047	2139-4A-3	3			
	2139-11A-2	2			
09-50-3052	2139-5A-4	4			
09-50-3076	2139-7A-52	4,7			
09-50-3125	2139-12A-5	5			
	2139-7A-3	3			
09-50-3053	2139-7A-5	5			
	2139-5A-2	2			
09-50-3127	2139-12A-2	2			
09-50-3143	2139-14A-2	2			
09-50-3202	2139-20A-2	2			
S	2139-9A-4	4			
09-50-3126	2139-12A-11	11			
09-50-3142	2139-14A-13	13			
09-50-3084	2139-8A-4	4			
09-50-3037	2139-3A-3	3			
09-50-3182	2139-18A-2	2			
09-50-3157	2139-15A-2	2			

<b>UPDATE TITLE BLOCK</b> DEC NO: UCP2006-0451 DRAWN: JUNE 2005/17/09 CHECKED: JUNE 2005/17/12 APPROVED: JUNE 2005/17/14 AFT	<b>QUALITY SYMBOLS</b> ▽=0 ▽=0	<b>GENERAL TOLERANCES (UNLESS SPECIFIED)</b> mm INCH 4 PLACES ± .010 ± .010 3 PLACES ± .025 ± .014 2 PLACES ± 0.36 ± .014 1 PLACE ± 0.36 ± .014 ANGULAR ±1/2°		<b>DIMENSION STYLE</b> MM/IN		SCALE ---	DESIGN UNITS INCH	THIRD ANGLE PROJECTION	
		DRAWN BY: SAMIEC DATE: 1986/01/17 CHECKED BY: PATEL DATE: 1986/01/17 APPROVED BY: LENZ DATE: 1986/01/17		MATERIAL NO. SEE CHART DOCUMENT NO. SD-2139		TITLE: CONNECTOR HOUSING FOR CRIMP TERMINAL 2139 SERIES DWG. MOLEX INCORPORATED			
		DRAFT WHERE APPLICABLE MUST REMAIN WITHIN DIMENSIONS		SIZE D		THIS DRAWING CONTAINS INFORMATION THAT IS PROPRIETARY TO MOLEX INCORPORATED AND SHOULD NOT BE USED WITHOUT WRITTEN PERMISSION			
								SHEET NO. 2 OF 4	

19 18 17 16 15 14 13 12 11 10 9 8 7 6 5 4 3 2 1