

Switch Language

English

Need Assistance?

- Contact Us
- Find a Distributor
- Order Samples
- Tech Library

Printer-friendly page

Email this page

[Home](#) [Crimp Housings](#) [Datasheet](#)

Part Number: 0009507041

Status: Active **Overview:** [KK®](#)

Description: 3.96mm (.156") Pitch KK® Crimp Terminal Housing, 4 Circuits

Documents:

Note - Please disable browser pop-up blockers for documents on www.molex.com

- [Drawing \(PDF\)](#) [Product Specification PS-08-50 \(PDF\)](#)
- [3D Model](#) [Related Catalog Page \(PDF\)](#)



Order Products:

- [Check Distributor Inventory](#) [Add to My Parts](#)
- [Request Samples](#)

Part Detail: [\(show all\)](#)

- [General](#) [Physical](#) [Electrical](#) [Material Info](#)

General

| | |
|----------------|----------------------|
| Product Family | Crimp Housings |
| Series | 2139 |
| Overview | KK® |
| Product Name | KK® |

Physical

| | |
|-------------------------------|--------------|
| Circuits (maximum) | 4 |
| Color - Resin | Natural |
| Flammability | 94V-2 |
| Gender | Female |
| Material - Resin | Nylon |
| Number of Rows | 1 |
| Packaging Type | Bag |
| Panel Mount | No |
| Pitch - Mating Interface (in) | 0.156 In |
| Pitch - Mating Interface (mm) | 3.96 mm |
| Temperature Range - Operating | 0°C to +75°C |

Electrical

| | |
|-----|---------|
| CSA | LR19980 |
| UL | E29179 |

Material Info

| | |
|-----------------|---------|
| Old Part Number | 2139-4C |
|-----------------|---------|

Reference - Drawing Numbers

| | |
|-----------------------|----------|
| Product Specification | PS-08-50 |
| Sales Drawing | SD-2139 |

EU RoHS **China RoHS**
ELV and RoHS Compliant



Need more information on product compliance?

Email productcompliance@molex.com

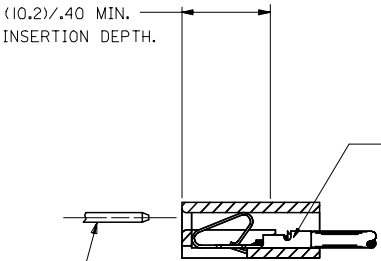
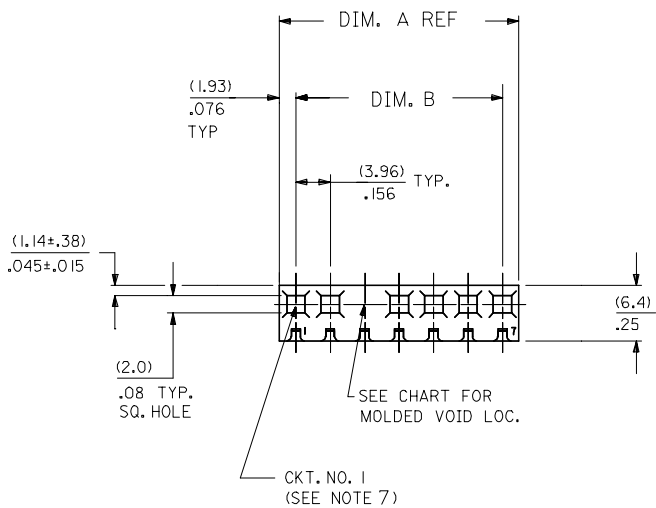
Please visit the [Contact Us](#) section for any non-product compliance questions.

Search Parts in this Series

[2139](#) Series

Use With

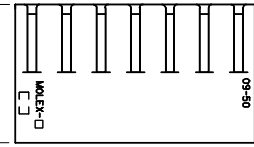
[2478](#) Crimp Terminals for 18-24 AWG, [2578](#) Crimp Terminals for 22-26 AWG



TERMINAL SHOWN FOR REF. ONLY

(1.14)±.045 SQ. OR ROUND PIN IS STANDARD. HOUSING WILL ACCEPT PIN SIZES FROM (.51)±.020 TO (1.57)±.062

| DIM. A | DIM. B | NO. OF |
|---------|-------------|--------|
| (7.82) | (3.96±.13) | 2 |
| .308 | .156±.005 | |
| (11.79) | (7.92±.13) | 3 |
| .464 | .312±.005 | |
| (15.75) | (11.89±.13) | 4 |
| .620 | .468±.005 | |
| (19.71) | (15.85±.13) | 5 |
| .776 | .624±.005 | |
| (23.67) | (19.81±.13) | 6 |
| .932 | .780±.005 | |
| (27.64) | (23.77±.13) | 7 |
| 1.088 | .936±.005 | |
| (31.60) | (27.74±.25) | 8 |
| 1.244 | 1.092±.010 | |
| (35.56) | (31.70±.25) | 9 |
| 1.400 | 1.248±.010 | |
| (39.52) | (35.66±.25) | 10 |
| 1.556 | 1.404±.010 | |
| (43.48) | (39.62±.25) | 11 |
| 1.712 | 1.560±.010 | |
| (47.45) | (43.59±.25) | 12 |
| 1.868 | 1.716±.010 | |
| (51.41) | (47.55±.31) | 13 |
| 2.024 | 1.872±.012 | |
| (55.37) | (51.51±.36) | 14 |
| 2.180 | 2.028±.014 | |
| (59.33) | (55.47±.36) | 15 |
| 2.336 | 2.184±.014 | |
| (63.30) | (59.44±.36) | 16 |
| 2.492 | 2.340±.014 | |
| (67.26) | (63.40±.36) | 17 |
| 2.648 | 2.496±.014 | |
| (71.22) | (67.36±.36) | 18 |
| 2.804 | 2.652±.014 | |
| (75.18) | (71.32±.36) | 19 |
| 2.960 | 2.808±.014 | |
| (79.15) | (75.29±.36) | 20 |
| 3.116 | 2.964±.014 | |
| (83.11) | (79.25±.46) | 21 |
| 3.272 | 3.120±.018 | |
| (87.07) | (83.21±.46) | 22 |
| 3.428 | 3.276±.018 | |
| (91.03) | (87.17±.46) | 23 |
| 3.584 | 3.432±.018 | |
| (95.00) | (91.14±.46) | 24 |
| 3.740 | 3.588±.018 | |



OPTION CODE

| OPT. CODE | RAMP | POL. RIB | EARS | MATERIAL | ENGRAVING | PACKAGING |
|-----------|-----------|----------|------|---------------|-----------|---------------|
| A | STD. RAMP | NO | NO | NYLON 94V-2 | STD. | PK-2139-001 |
| C | NONE | NO | NO | NYLON 94V-2 | STD. | PK-2139-002 |
| G | WIDE RAMP | NO | NO | NYLON 94V-2 | STD. | PK-2139-001 |
| M | STD. RAMP | NO | NO | NYLON 6 94V-2 | STD. | TBD-INDIA |
| N | NONE | NO | NO | NYLON 6 94V-2 | STD. | TBD-INDIA |
| P | STD. RAMP | YES | NO | NYLON 94V-2 | STD. | TBD SINGAPORE |

NO. OF CKT'S. 2 139-N *** - *** - ***

SELECTIVE RAMP LOC.
 BLANK=NONE
 AA=1ST. SEL. LOC.
 AB=2ND. SEL. LOC., ETC.

VOID CODE
 NO. CORRESPONDS TO CKT. NO. VOIDED.
 MULT. VOIDS START WITH 51.

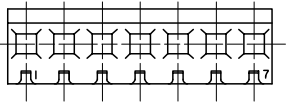
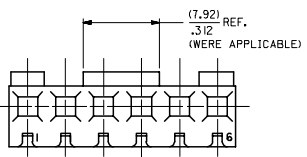
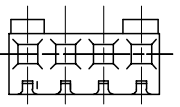
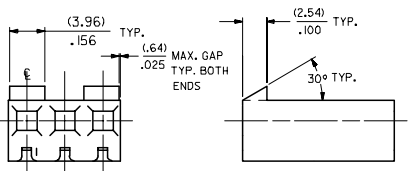
COLOR CODE
 BLANK=NATURAL
 GN=GREEN
 YW=YELLOW
 RD=RED
 OR=ORNANGE
 BU=BLUE
 BK=BLACK

- NOTES:
- MATERIAL: SEE LEGEND.
 - FINISH: N/A
 - PARTS CONFORM TO PRODUCT SPECIFICATION PS-08-50.
 - PACKAGING INFORMATION: SEE LEGEND
 - THIS HOUSING FOR USE WITH TERMINAL NO. 2478 (18 TO 24 GA) & 2578 (22 TO 26 GA), WITH (2.54)±.100 MAX. INSULATION DIA. HOUSING 41695 IS RECOMMENDED FOR OVER (2.54)±.100 DIA. INSULATION.
 - DIMENSIONS GIVEN ACROSS CENTERLINES ARE SYMMETRICAL ABOUT THOSE CENTERLINES WITHIN HALF THE TOTAL TOLERANCE.
 - FIRST CKT. NO. ON 1 THRU 5 CKT. HOUSINGS, FIRST AND LAST CKT. NO. ON 6 CKT HOUSING AND LARGER.
 - MAX BOW .005 MM/MM OR .005 IN/IN
 - 2139-NP-* IS MANUFACTURED IN SINGAPORE ONLY.

| | | | | | | | | |
|--|-------------------------------|---|--|--|--|--|-------------------------|---------------------|
| UPDATE PER ECN ECN NO: UCP2006-0451 2005/11/09 DRAWN: JUNE 2005/12/12 CHECKED: JUNE 2005/12/12 APPROVED: JUNE 2005/12/12 APPROVED: JUNE 2005/12/12 | QUALITY SYMBOLS ▽=0 ▽=0 | GENERAL TOLERANCES (UNLESS SPECIFIED) mm INCH 2 PLACES ±.010 ±.010 3 PLACES ±.025 ±.014 2 PLACES ±0.36 ±.010 1 PLACE ±0.36 ±.010 ANGULAR ±1/2° | DIMENSION STYLE MM/IN DRAWN BY DATE SAMIEC 1986/01/17 CHECKED BY DATE PATEL 1986/01/17 APPROVED BY DATE LENZ 1986/01/07 | SCALE --- DESIGN UNITS INCH THIRD ANGLE PROJECTION | TITLE CONNECTOR HOUSING .156 CL CRIMP TERMINAL 2139 SERIES DWG. MOLEX INCORPORATED | MATERIAL NO. SEE CHART SIZE D | DOCUMENT NO. SD-2139 | SHEET NO. 1 OF 4 |
| | | DRAFT WHERE APPLICABLE MUST REMAIN WITHIN DIMENSIONS THIS DRAWING CONTAINS INFORMATION THAT IS PROPRIETARY TO MOLEX INCORPORATED AND SHOULD NOT BE USED WITHOUT WRITTEN PERMISSION | | | | | | |

| | |
|---|-----|
| 4 | AET |
| 3 | AET |
| 2 | AET |
| 1 | AET |

20 19 18 17 16 15 14 13 12 11 10 9 8 7 6 5 4 3 2 1



| NO. OF CKT'S. | STANDARD RAMP IS LOCATED ON % OF CKT. NOS. |
|---------------|--|
| 2 | ACROSS ENTIRE PART |
| 3 | 1,3 |
| 4 | 1,4 |
| 5 | 1,3,5 |
| 6 | 1,3,4,6 |
| 7 | ACROSS ENTIRE PART |
| 8 | 1,3,6,8 |
| 9 | ACROSS ENTIRE PART |
| 10 | 1,3,5,6,8,10 |
| 11 | ACROSS ENTIRE PART |
| 12 | 1,3,5,8,10,12 |
| 13 | 1,3,5,7,9,11,13 |
| 14 | 1,3,5,7,8,10,12,14 |
| 15 | 1,3,5,7,9,11,13,15 |
| 16 | 1,3,5,7,10,12,14,16 |
| 17 | 1,3,5,7,9,11,13,15,17 |
| 18 | 1,3,5,7,9,10,12,14,16,18 |
| 19 | 1,3,5,7,9,11,13,15,17,19 |
| 20 | 1,3,5,7,9,12,14,16,18,20 |
| 21 | 1,3,5,7,9,11,13,15,17,19,21 |
| 22 | 1,3,5,7,9,11,12,14,16,18,20,22 |
| 23 | 1,3,5,7,9,11,13,15,17,19,21,23 |
| 24 | 1,3,5,7,9,11,14,16,18,20,22,24 |

STD. RAMP OPTION
SEE CHART FOR RAMP LOCATIONS.

| 2139-NA-* | | | 2139-NC-* | | |
|------------|-------------|--------|--------------|-------------|--------|
| ORDER NO. | ENG. NO. | VOIDS | ORDER NO. | ENG. NO. | VOIDS |
| 09-50-3021 | 2139-2A | | 09-50-7021 | 2139-2C | |
| 09-50-3031 | 2139-3A | | 09-50-7031 | 2139-3C | |
| 09-50-3041 | 2139-4A | | 09-50-7041 | 2139-4C | |
| 09-50-3051 | 2139-5A | | 09-50-7051 | 2139-5C | |
| 09-50-3061 | 2139-6A | | 09-50-7061 | 2139-6C | |
| 09-50-3071 | 2139-7A | | 09-50-7071 | 2139-7C | |
| 09-50-3081 | 2139-8A | | 09-50-7081 | 2139-8C | |
| 09-50-3091 | 2139-9A | | 09-50-7091 | 2139-9C | |
| 09-50-3101 | 2139-10A | | 09-50-7101 | 2139-10C | |
| 09-50-3111 | 2139-11A | | 09-50-7111 | 2139-11C | |
| 09-50-3121 | 2139-12A | | 09-50-7121 | 2139-12C | |
| 09-50-3131 | 2139-13A | | 09-50-7131 | 2139-13C | |
| 09-50-3141 | 2139-14A | | 09-50-7141 | 2139-14C | |
| 09-50-3151 | 2139-15A | | 09-50-7151 | 2139-15C | |
| 09-50-3161 | 2139-16A | | 09-50-7161 | 2139-16C | |
| 09-50-3171 | 2139-17A | | 09-50-7171 | 2139-17C | |
| 09-50-3181 | 2139-18A | | 09-50-7181 | 2139-18C | |
| 09-50-3191 | 2139-19A | | 09-50-7191 | 2139-19C | |
| 09-50-3201 | 2139-20A | | 09-50-7201 | 2139-20C | |
| 09-50-3211 | 2139-21A | | 09-50-7211 | 2139-21C | |
| 09-50-3221 | 2139-22A | | 09-50-7221 | 2139-22C | |
| 09-50-3231 | 2139-23A | | 09-50-7231 | 2139-23C | |
| 09-50-3241 | 2139-24A | | 09-50-7241 | 2139-24C | |
| 09-50-3036 | 2139-3A-2 | 2 | 09-50-7117 | 2139-11C-51 | 2,7,10 |
| | 2139-10A-2 | 2 | 09-50-7166 | 2139-16C-2 | 2 |
| | 2139-10A-51 | 2,5 | 09-50-7106 | 2139-10C-2 | 2 |
| | 2139-7A-2 | 2 | 09-50-7107 | 2139-10C-51 | 2,5 |
| | 2139-11A-51 | 2,7,10 | 09-50-7076 | 2139-7C-2 | 2 |
| 09-50-3163 | 2139-16A-2 | 2 | | 2139-4C-3 | 3 |
| 09-50-3073 | 2139-10A-7 | 7 | T 09-50-7108 | 2139-10C-4 | 4 |
| 09-50-3083 | 2139-10A-8 | 8 | T 09-50-7109 | 2139-10C-5 | 5 |
| 09-50-3104 | 2139-10A-9 | 9 | | 2139-5C-2 | 2 |
| 09-50-3162 | 2139-16A-51 | 2,15 | 09-50-3077 | 2139-7C-3 | 3 |
| 09-50-3092 | 2139-9A-51 | 2,6 | 09-50-3078 | 2139-7C-5 | 5 |
| 09-50-3075 | 2139-7A-51 | 1,7 | 09-50-7142 | 2139-14C-5 | 5 |
| | 2139-7A-6 | 6 | | | |
| | 2139-5A-51 | 2,4 | | | |
| 09-50-3047 | 2139-4A-3 | 3 | | | |
| | 2139-11A-2 | 2 | | | |
| 09-50-3052 | 2139-5A-4 | 4 | | | |
| 09-50-3076 | 2139-7A-52 | 4,7 | | | |
| 09-50-3125 | 2139-12A-5 | 5 | | | |
| | 2139-7A-3 | 3 | | | |
| 09-50-3053 | 2139-7A-5 | 5 | | | |
| | 2139-5A-2 | 2 | | | |
| 09-50-3127 | 2139-12A-2 | 2 | | | |
| 09-50-3143 | 2139-14A-2 | 2 | | | |
| 09-50-3202 | 2139-20A-2 | 2 | | | |
| S | 2139-9A-4 | 4 | | | |
| 09-50-3126 | 2139-12A-11 | 11 | | | |
| 09-50-3142 | 2139-14A-13 | 13 | | | |
| 09-50-3084 | 2139-8A-4 | 4 | | | |
| 09-50-3037 | 2139-3A-3 | 3 | | | |
| 09-50-3182 | 2139-18A-2 | 2 | | | |
| 09-50-3157 | 2139-15A-2 | 2 | | | |

| | | | | | | |
|---|--------------------------------------|--|---------------------------|-------------------------|----------------------|------------------------|
| UPDATE TITLE BLOCK DEC NO: UCP2006-0451 DRAWN: JUNE 2005/17/09 CHECKED: JUNE 2005/17/12 APPROVED: JUNE 2005/17/14 AFT | QUALITY SYMBOLS ▽=0 ▽=0 | GENERAL TOLERANCES (UNLESS SPECIFIED) mm INCH 4 PLACES ± --- ± --- 3 PLACES ± --- ± .010 2 PLACES ± 0.25 ± .014 1 PLACE ± 0.36 ± --- ANGULAR ±1/2° | DIMENSION STYLE MM/IN | SCALE --- | DESIGN UNITS INCH | THIRD ANGLE PROJECTION |
| | | DRAWN BY: SAMIEC DATE: 1986/01/17 CHECKED BY: PATEL DATE: 1986/01/17 APPROVED BY: LENZ DATE: 1986/01/17 | MATERIAL NO. SEE CHART | DOCUMENT NO. SD-2139 | SHEET NO. 2 OF 4 | |

CONNECTOR HOUSING FOR CRIMP TERMINAL 2139 SERIES DWG.
MOLEX INCORPORATED

DRAFT WHERE APPLICABLE MUST REMAIN WITHIN DIMENSIONS

THIS DRAWING CONTAINS INFORMATION THAT IS PROPRIETARY TO MOLEX INCORPORATED AND SHOULD NOT BE USED WITHOUT WRITTEN PERMISSION

19 18 17 16 15 14 13 12 11 10 9 8 7 6 5 4 3 2 1