

Part Number:

0008520072

Status:

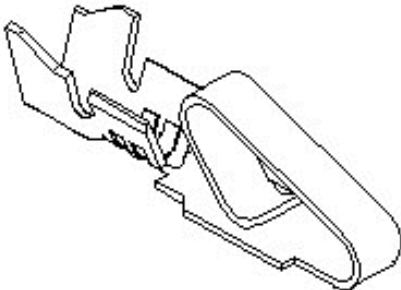
Active

Overview:

KK®

Description:

3.96mm (.156) Pitch KK® Crimp Terminal 2478, 18-24 AWG, Bag, Phosphor Bronze, Tin (Sn)



Series image - Reference only

General

Product Family	Crimp Terminals
Series	2478
Overview	KK®
Product Name	KK®

Physical

Gender	Female
Material - Metal	Phosphor Bronze
Material - Plating Mating	Tin
Material - Plating Termination	Tin
Packaging Type	Bag
Plating min: Mating (µin)	100
Plating min: Mating (µm)	2.50
Plating min: Termination (µin)	100
Plating min: Termination (µm)	2.50
Termination Interface: Style	Crimp or Compression
Wire Insulation Diameter	2.79mm (.110") max.
Wire Size AWG	18
Wire Size AWG	20
Wire Size AWG	22
Wire Size AWG	24
Wire Size mm²	N/A

Material Info

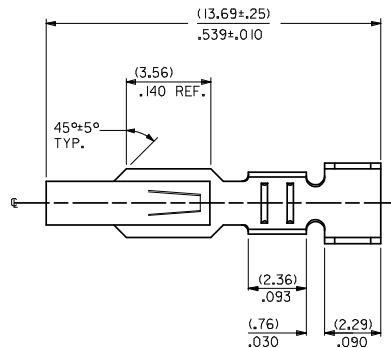
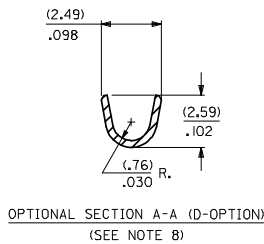
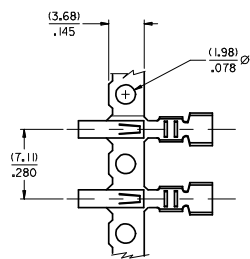
Old Part Number	2478-3-(P909)L
-----------------	----------------

EU RoHS
ELV and RoHS
Compliant

China RoHS



20 19 18 17 16 15 14 13 12 11 10 9 8 7 6 5 4 3 2 1



MATERIAL CODE
(.27)/.0106 THK
1=BRASS
3=PHOS BRONZE

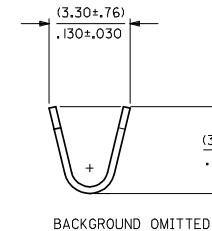
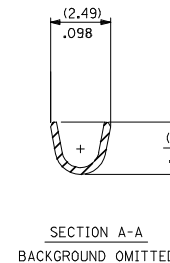
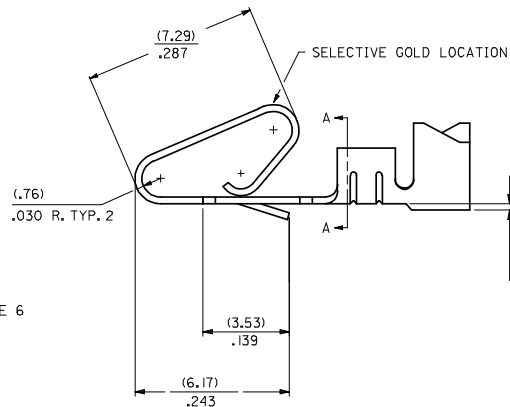
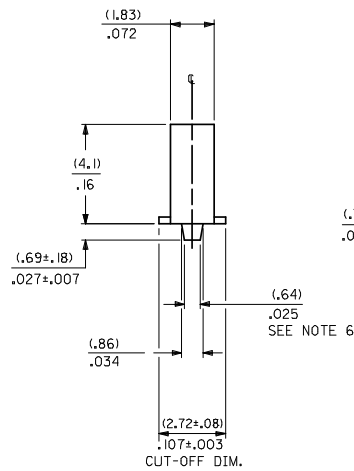
2478- * - * - *

WINDING SPEC.
A=PER ES-339-A
BLANK=PER ES-339-B
L=LOOSE

OPTION CODE
BLANK=AS SHOWN
C=CAT EAR OPTION
D=OPTIONAL CONDUCTOR
CRIMP (FOR IRELAND)
(SEE OPT. SECTION A-A)
WITHOUT CAT EARS
E=LOW INSERTION
FORCE OPTION

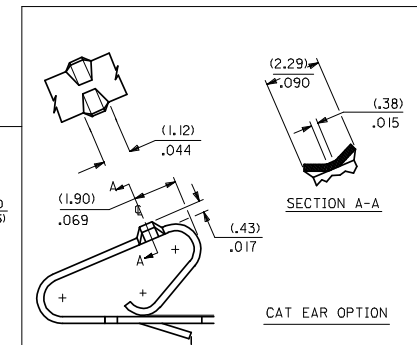
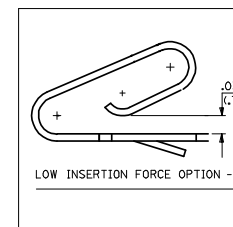
FINISH: PER SDES-88
(P909) *OVERALL HOT TIN DIP: 2.54 MICROMETERS MIN.
(550) SELECT GOLD: 0.38 MICROMETERS MIN.
OVERALL GOLD FLASH: 0.05 MICROMETERS MIN.
OVERALL NICKEL UNDERPLATE: 0.76 MICROMETERS MIN.
(555) SELECT GOLD: 0.38 MICROMETERS MIN.
OVERALL NICKEL UNDERPLATE: 0.76 MICROMETERS MIN.

*THE PRIMARY SHIPPING CARTON WILL BE LABELED 'COMPLIANT TO
RoHS DIRECTIVE 2002/95/EC AND ELV ANNEX II OF DIRECTIVE
2000/53/EC'. CARTONS WITHOUT THIS LABEL MAY CONTAIN PRODUCT
WITH TIN/LEAD PLATING.



NOTES:

1. CRIMP ACCEPTS 18 TO 24 GA. WIRE WITH (2.79)/.110 MAX. INSUL. DIA.; WHEN USED WITH 2574 CONNECTOR, (2.54)/.100 MAX. INSUL. DIA. WHEN USED WITH 2139 CONNECTOR; HOUSING 41695 IS RECOMMENDED FOR OVER (2.54)/.100 DIA. INSULATION. CRIMP ACCEPTS (3.00)/.118 MAX. INSUL. DIA. WITH SPECIAL TOOLING.
2. DIMENSIONS GIVEN ACROSS CENTERLINES ARE SYMMETRICAL ABOUT THOSE CENTERLINES WITHIN HALF THE TOTAL TOLERANCE.
- 3.
6. (.86±.05)/.034±.002 IS AN OPTIONAL DESIGN.
7. THIS PART CONFORMS TO PRODUCT SPEC. 08-50.
8. CONDUCTOR CRIMP FOR 16 AWG. WIRE WITH .110 MAX. INSULATION DIA.

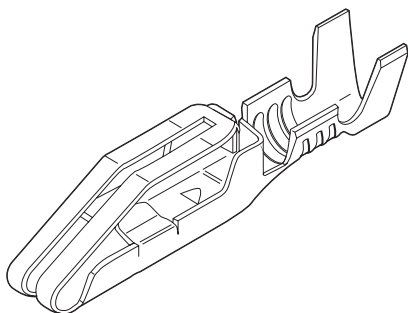


CHANGE TO ME10 EC NO: UCP2005-0902 DRAWN BY: DRWADATINOL 2004/11/16 CHKD BY: SAMIEC 2006/03/12/16 APPROVED BY: MARGULIS 2004/11/02/18	QUALITY SYMBOLS ▽=0 ▽=0	GENERAL TOLERANCES (UNLESS SPECIFIED):		DIMENSION STYLE		SCALE		DESIGN UNITS		THIRD ANGLE PROJECTION			
				IN/MM				INCH					
		4 PLACES ±.005		3 PLACES ±.010		2 PLACES ±.014		1 PLACE ±.036					
		ANGULAR ±1/2°											
		DRAFT WHERE APPLICABLE		MUST REMAIN WITHIN DIMENSIONS									
		DRAWN BY: DRWADATINOL 2004/11/16		CHECKED BY: SAMIEC 2006/03/12/16		APPROVED BY: MARGULIS 2004/11/02/18		DATE: 06/03/86		DATE: 06/03/86		DATE: 06/03/86	
		TITLE		CRIMP TERMINAL		.156 CENTERS		18 TO 24 GA WIRE		MOLEX INCORPORATED			
		MATERIAL NO.		LENZ 06/03/86		DOCUMENT NO.		SD-2478		SHEET NO.		1 OF 2	
		SIZE		D		THIS DRAWING CONTAINS INFORMATION THAT IS PROPRIETARY TO MOLEX INCORPORATED AND SHOULD NOT BE USED WITHOUT WRITTEN PERMISSION							
		REV		DESCRIPTION									

[illegible]

3.96mm (.156") Pitch Double-Sided Edge KK® Connector Terminals

4366
PC Crimp and Solder Eyelet



Features and Benefits

- Solder loop version available
- Anti-fishhooking feature prevents terminals from snagging
- Wire barrier prevents stripped wire from entering the contact area
- Coined outside edges prevent excess scoring of the solder pad surfaces
- Patented bifurcated contact area
- Anti-overstress feature

Reference Information

Packaging: Reel or bag
Use With: 4338
Designed In: Inches

Electrical

Voltage: 250V
Current: 5.0A
Contact Resistance: 20 milliohms max.
Dielectric Withstanding Voltage: 1500V
Insulation Resistance: 50,000 Megohms min.

Mechanical

Contact Retention to Housing: 8 lb min.
Wire Pull-Out Force: 20 lb for 18 AWG
(less for smaller wire)

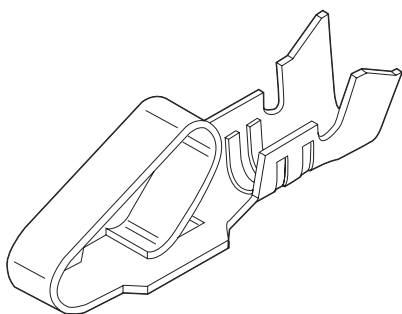
Physical

Contact: Brass
Plating: See Table
Operating Temperature: 0 to +75°C

Order No.		Crimp Wire Size	Maximum Insulation Diameter	Engineering No.	Plating	Lead-free
Reel Form	Bag Form					
08-03-0303	08-03-0304	18-20	2.79 (.110)	4366	Tin	Yes
08-05-0301	08-05-0302			4366	Gold	

3.96mm (.156") Pitch KK® Crimp Terminal

2478/2578



Features and Benefits

- Double cantilever design
- Single beam terminal is available for low insertion force 7821 Series (contact Molex)
- For low-level current and voltage, use Gold plating
- Phosphor Bronze is recommended for rated current
- Complete line of terminal crimping equipment available (see Application Tooling section of this catalog)

Reference Information

Product Specification: PS-08-50
Packaging: Reel or bag
Tooling Information: See crimp tooling section
UL File No.: E29179
CSA File No.: LR19980
Use With: 2139, 3069 and 41695
Designed In: Inches

Electrical

Voltage: 250V AC max.
Current: Max.

AWG	18	20	22	24	26
Phosphor Bronze	7.00A	6.25A	5.50A	5.00A	4.50A
Brass	5.00A	4.75A	4.50A	4.25A	4.00A

Contact Resistance: 6 milliohms max.
Dielectric Withstanding Voltage: 1500V AC
Insulation Resistance: 50K Megohms min.

Mechanical

Contact Insertion Force: 1.8kg (4 lb) max.
Contact Retention to Housing: 3.6kg (8 lb) min.
Wire Pull-Out Force: 20 lb max./18 AWG
Normal Force: 0.75kg (1.65 lb)
Durability: 25 cycles max.

Physical

Contact: Brass or Phosphor Bronze
Plating: See Table
Operating Temperature: Phosphor Bronze—0 to +75°C
Brass—0 to +50°C

Order No.						Wire Size AWG	Insulation OD	Series	Material	Lead-free
Tin Plating		Gold Plating No. 1		Gold Plating No. 2						
Reel	Bag	Reel	Bag	Reel	Bag					
08-52-0071	08-52-0072	08-58-0121	08-58-0122	08-65-0114	08-65-0115	18-20	2.79 (.110)	max. 2478	Phosphor Bronze	Yes
08-50-0105	08-50-0106	08-56-0105	08-56-0106	08-55-0103	08-55-0104	18-20	2.79 (.110)	max. 2478	Brass	
08-50-0133	08-50-0134	08-58-0125	08-58-0126	08-65-0116	08-65-0117	22-26	1.65 (.065)	max. 2578	Phosphor Bronze	
08-50-0107	08-50-0108	08-56-0107	08-56-0108	08-55-0105	08-55-0106	22-26	1.65 (.065)	max. 2578	Brass	

Recommended wire range assumes stranded wire
Plating No. 1: 20µ" min. Gold in contact area with a flash overall
Plating No. 2: 15µ" min. Gold in contact area only