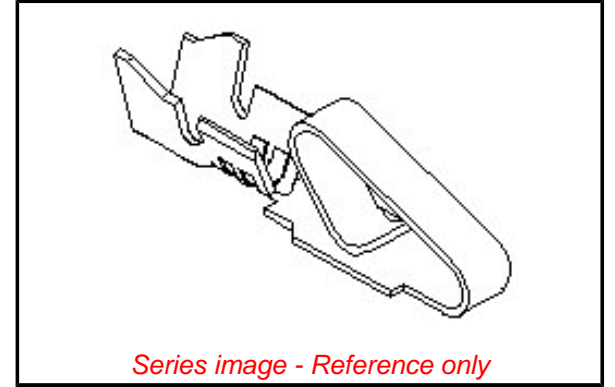


Part Number: [0008500106](#)
Status: **Active**
Overview: [KK®](#)
Description: 3.96mm (.156") Pitch KK® Crimp Terminal 2478, 18-24 AWG, Bag, Brass Tin (Sn)



General

Product Family	Crimp Terminals
Series	2478
Overview	KK®
Product Name	KK®

Physical

Gender	Female
Material - Metal	Brass
Material - Plating Mating	Tin
Material - Plating Termination	Tin
Packaging Type	Bag
Plating min: Mating (µin)	100
Plating min: Mating (µm)	2.50
Plating min: Termination (µin)	100
Plating min: Termination (µm)	2.50
Termination Interface: Style	Crimp or Compression
Wire Insulation Diameter	2.79mm (.110") max.
Wire Size AWG	18
Wire Size AWG	20
Wire Size AWG	22
Wire Size AWG	24
Wire Size mm²	N/A

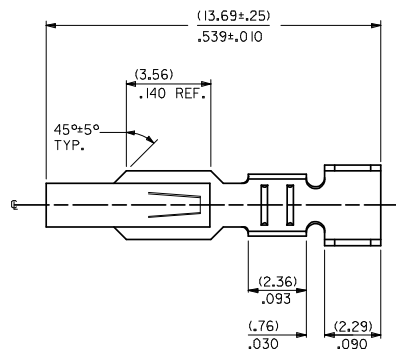
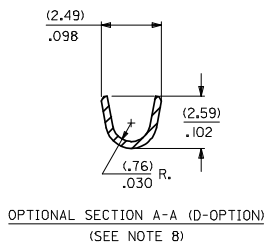
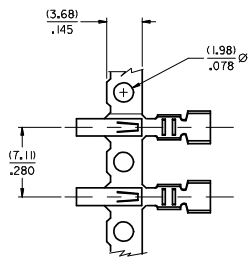
Material Info

Old Part Number	2478-1-(P909)L
-----------------	----------------

EU RoHS
ELV and RoHS
Compliant

China RoHS





2478- * * * * *

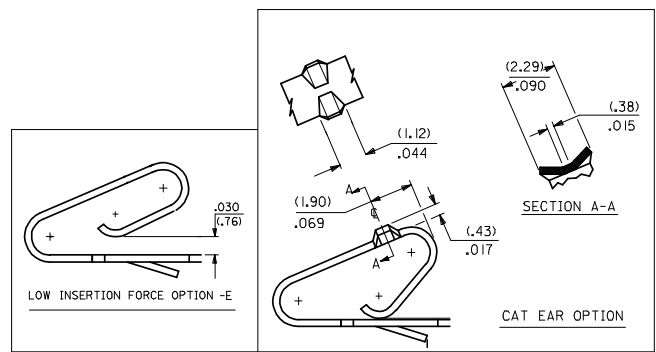
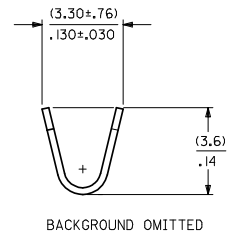
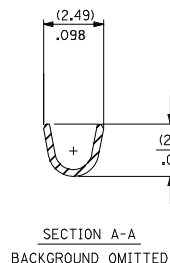
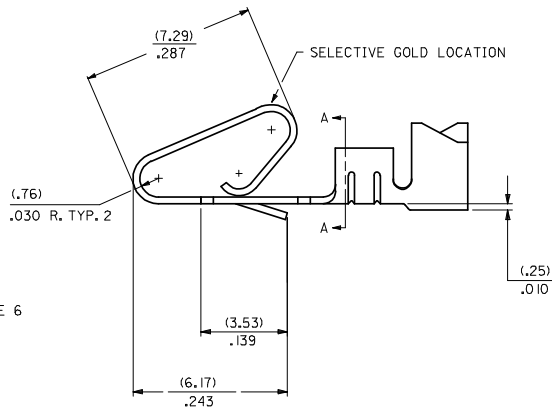
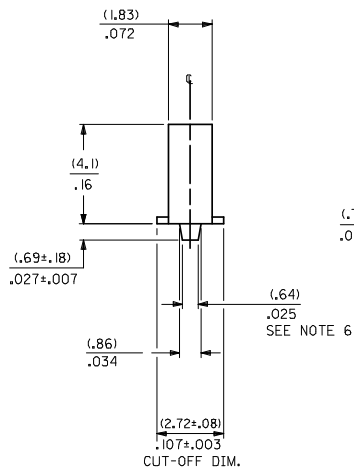
MATERIAL CODE
(.27)/.0106 THK
1=BRASS
3=PHOS BRONZE

OPTION CODE
BLANK=AS SHOWN
C=CAT EAR OPTION
D=OPTIONAL CONDUCTOR CRIMP (FOR IRELAND) (SEE OPT. SECTION A-A) WITHOUT CAT EARS
E=LOW INSERTION FORCE OPTION

WINDING SPEC.
A=PER ES-339-A
BLANK=PER ES-339-B
L=LOOSE

FINISH: PER SDES-88
(P909) *OVERALL HOT TIN DIP: 2.54 MICROMETERS MIN.
(550) SELECT GOLD: 0.38 MICROMETERS MIN.
OVERALL GOLD FLASH: 0.05 MICROMETERS MIN.
OVERALL NICKEL UNDERPLATE: 0.76 MICROMETERS MIN.
(555) SELECT GOLD: 0.38 MICROMETERS MIN.
OVERALL NICKEL UNDERPLATE: 0.76 MICROMETERS MIN.

*THE PRIMARY SHIPPING CARTON WILL BE LABELED "COMPLIANT TO RoHS DIRECTIVE 2002/95/EC AND ELV ANNEX II OF DIRECTIVE 2000/53/EC". CARTONS WITHOUT THIS LABEL MAY CONTAIN PRODUCT WITH TIN/LEAD PLATING.



- NOTES:
- CRIMP ACCEPTS 18 TO 24 GA. WIRE WITH (2.79)/.110 MAX. INSUL. DIA.; WHEN USED WITH 2574 CONNECTOR, (2.54)/.100 MAX. INSUL. DIA. WHEN USED WITH 2139 CONNECTOR; HOUSING 41695 IS RECOMMENDED FOR OVER (2.54)/.100 DIA. INSULATION. CRIMP ACCEPTS (3.00)/.118 MAX. INSUL. DIA. WITH SPECIAL TOOLING.
 - DIMENSIONS GIVEN ACROSS CENTERLINES ARE SYMMETRICAL ABOUT THOSE CENTERLINES WITHIN HALF THE TOTAL TOLERANCE.
 -
 -
 -
 - (.86±.05)/.034±.002 IS AN OPTIONAL DESIGN.
 - THIS PART CONFORMS TO PRODUCT SPEC. 08-50.
 - CONDUCTOR CRIMP FOR 16 AWG. WIRE WITH .110 MAX. INSULATION DIA.

CHANGE TO ME10 EC NO: UCP2005-0902 DRAWN BY: DRWADRATNOL 2004/11/16 CHKD BY: CHKDSAMIEC 2006/03/28 APPROVED BY: APPRMMARJULIS 2004/10/28	QUALITY SYMBOLS ▽=0 ▽=0	GENERAL TOLERANCES (UNLESS SPECIFIED)		DIMENSION STYLE IN/MM		SCALE	DESIGN UNITS INCH	THIRD ANGLE PROJECTION
		4 PLACES ±.005 ±.005	3 PLACES ±.005 ±.010	2 PLACES ±.025 ±.014	1 PLACE ±0.36 ±.005	ANGULAR ±1/2°	DRAWN BY: SAMIEC 06/03/86	DATE: 06/03/86
DRAFT WHERE APPLICABLE MUST REMAIN WITHIN DIMENSIONS		MATERIAL NO. SEE CHART		DOCUMENT NO. SD-2478		MOLEX INCORPORATED		
SIZE D		THIS DRAWING CONTAINS INFORMATION THAT IS PROPRIETARY TO MOLEX INCORPORATED AND SHOULD NOT BE USED WITHOUT WRITTEN PERMISSION						

2478-1-(***)*

PART NO.	ENG. NO.
08-50-0105	2478-1-(P909)
08-50-0106	2478-1-(P909)L
08-56-0105	2478-1-(550)
08-56-0106	2478-1-(550)L
08-55-0103	2478-1-(555)
08-55-0104	2478-1-(555)L
08-50-0146	2478-1-(109)
08-50-0147	2478-1-(109)L
08-50-0119	2478-1-(122)
08-50-0120	2478-1-(122)L
08-50-0271	2478-1-(P909)A
	2478-1-(507)
08-56-0153	2478-1-(507)L
08-56-0154	2478-1-(506)
	2478-1-(506)L
08-50-0015	2478-1-(102)
08-50-0016	2478-1-(102)L
08-52-0114	2478-1-(P909)
08-52-0115	2478-1-(P909)L
	2478-1-(132)
	2478-1-(132)L
08-50-0001	2478-1-(P224)
08-50-0006	2478-1-(P224)L
08-50-0063	2478-1-(224)
08-50-0064	2478-1-(224)L
08-55-0133	2478-1-(561)
08-55-0134	2478-1-(561)L
08-50-0073	2478-1-(P102)
08-50-0074	2478-1-(P102)L

2478-3-(***)*

PART NO.	ENG. NO.
08-52-0071	2478-3-(P909)
08-52-0072	2478-3-(P909)L
08-65-0114	2478-3-(555)
08-65-0115	2478-3-(555)L
08-52-0073	2478-3-(P102)
08-52-0074	2478-3-(P102)L
08-52-0811	2478-3-(102)
08-52-0812	2478-3-(102)L
08-50-0281	2478-3-(122)
	2478-3-(122)L
08-58-0121	2478-3-(550)
08-58-0122	2478-3-(550)L
08-58-0103	2478-3-(591)
08-58-0104	2478-3-(591)L
08-58-0114	2478-3-(558)
08-58-0115	2478-3-(558)L

2478-IC-(***)*

PART NO.	ENG. NO.
08-50-0014	2478-IC-(P909)
08-50-0045	2478-IC-(P909)L
08-50-0047	2478-IC-(P102)
08-50-0046	2478-IC-(P102)L
08-50-0091	2478-IC-(102)
08-50-0093	2478-IC-(102)L

2478-3C-(***)*

PART NO.	ENG. NO.
08-52-0044	2478-3C-(P909)
08-52-0045	2478-3C-(P909)L
08-52-0023	2478-3C-(102)
08-52-0024	2478-3C-(102)L
08-52-0027	2478-3C-(122)
	2478-3C-(122)L
08-52-0047	2478-3C-(P102)L
08-52-0046	2478-3C-(P102)

2478-ID-(***)*

PART NO.	ENG. NO.
08-50-0055	2478-ID-(P909)
08-50-0056	2478-ID-(P909)L

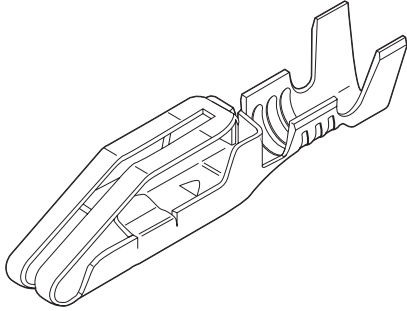
2478-3E-(***)*

PART NO.	ENG. NO.
	2478-3E-(P909)
	2478-3E-(P909)L
	2478-3E-(555)
	2478-3E-(555)L
	2478-3E-(550)
	2478-3E-(550)L

SEE SHEET I	SEE SHEET I	<small>DIMENSIONS SHOWN ARE IN INCH</small> <small>UNLESS OTHERWISE SPECIFIED</small> <small>ALL DIMENSIONS ARE TO CENTER UNLESS NOTED OTHERWISE</small> <table border="1"> <thead> <tr> <th>INCH</th> <th>METRIC</th> </tr> </thead> <tbody> <tr><td>1/16</td><td>1.5</td></tr> <tr><td>1/8</td><td>3.175</td></tr> <tr><td>3/16</td><td>4.75</td></tr> <tr><td>1/4</td><td>6.35</td></tr> <tr><td>5/16</td><td>7.9375</td></tr> <tr><td>3/8</td><td>9.525</td></tr> <tr><td>7/16</td><td>11.1125</td></tr> <tr><td>1/2</td><td>12.7</td></tr> <tr><td>9/16</td><td>14.2875</td></tr> <tr><td>5/8</td><td>15.875</td></tr> <tr><td>11/16</td><td>17.4625</td></tr> <tr><td>3/4</td><td>19.05</td></tr> <tr><td>7/8</td><td>21.6375</td></tr> <tr><td>1</td><td>25.4</td></tr> </tbody> </table>	INCH	METRIC	1/16	1.5	1/8	3.175	3/16	4.75	1/4	6.35	5/16	7.9375	3/8	9.525	7/16	11.1125	1/2	12.7	9/16	14.2875	5/8	15.875	11/16	17.4625	3/4	19.05	7/8	21.6375	1	25.4	REVISIONS ONLY ON CAD SYSTEM CRIMP TERMINAL .156 18/24 AWG WIRE MOLEX INCORPORATED U.S.A.
INCH	METRIC																																
1/16	1.5																																
1/8	3.175																																
3/16	4.75																																
1/4	6.35																																
5/16	7.9375																																
3/8	9.525																																
7/16	11.1125																																
1/2	12.7																																
9/16	14.2875																																
5/8	15.875																																
11/16	17.4625																																
3/4	19.05																																
7/8	21.6375																																
1	25.4																																
SEE SHEET I	SEE SHEET I																																
SEE SHEET I	SEE SHEET I																																
SEE SHEET I	SEE SHEET I																																
SEE SHEET I	SEE SHEET I																																
SEE SHEET I	SEE SHEET I																																
SEE SHEET I	SEE SHEET I	DATE: 06/12/86 SHEET NO.: 2 PART NO.: U.S.A. DRG. NO.: SEE CHARTS SD-2478 <small>FOR DRAWING COORDINATE INFORMATION THAT IS PROPRIETARY TO MOLEX INC., THE PATENT IS IN THE PUBLIC DOMAIN.</small>																															
LTR. REVISIONS	LTR. REVISIONS	DRG. BY: SAMIEC APP'D BY: ADAMK CHG. BY: DATE: SCALE:	DRG. NO.: DATE: SHEET NO.: U.S.A. DRG. NO.: SEE CHARTS SD-2478 <small>FOR DRAWING COORDINATE INFORMATION THAT IS PROPRIETARY TO MOLEX INC., THE PATENT IS IN THE PUBLIC DOMAIN.</small>																														

3.96mm (.156") Pitch Double-Sided Edge KK[®] Connector Terminals

4366 PC Crimp and Solder Eyelet



Features and Benefits

- Solder loop version available
- Anti-fishhooking feature prevents terminals from snagging
- Wire barrier prevents stripped wire from entering the contact area
- Coined outside edges prevent excess scoring of the solder pad surfaces
- Patented bifurcated contact area
- Anti-overstress feature

Reference Information

Packaging: Reel or bag
Use With: 4338
Designed In: Inches

Electrical

Voltage: 250V
Current: 5.0A
Contact Resistance: 20 milliohms max.
Dielectric Withstanding Voltage: 1500V
Insulation Resistance: 50,000 Megohms min.

Mechanical

Contact Retention to Housing: 8 lb min.
Wire Pull-Out Force: 20 lb for 18 AWG
(less for smaller wire)

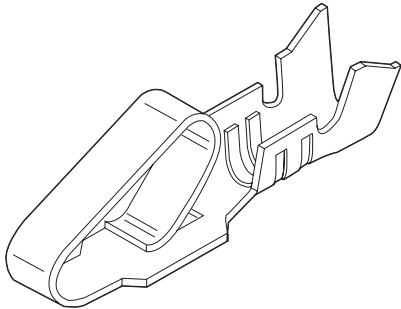
Physical

Contact: Brass
Plating: See Table
Operating Temperature: 0 to +75°C

Order No.		Crimp Wire Size	Maximum Insulation Diameter	Engineering No.	Plating	Lead-free
Reel Form	Bag Form					
08-03-0303	08-03-0304	18-20	2.79 (.110)	4366	Tin	Yes
08-05-0301	08-05-0302			4366	Gold	

3.96mm (.156") Pitch KK[®] Crimp Terminal

2478/2578



Features and Benefits

- Double cantilever design
- Single beam terminal is available for low insertion force 7821 Series (contact Molex)
- For low-level current and voltage, use Gold plating
- Phosphor Bronze is recommended for rated current
- Complete line of terminal crimping equipment available (see Application Tooling section of this catalog)

Reference Information

Product Specification: PS-08-50
Packaging: Reel or bag
Tooling Information: See crimp tooling section
UL File No.: E29179
CSA File No.: LR19980
Use With: 2139, 3069 and 41695
Designed In: Inches

Electrical

Voltage: 250V AC max.
Current: Max.

AWG	18	20	22	24	26
Phosphor Bronze	7.00A	6.25A	5.50A	5.00A	4.50A
Brass	5.00A	4.75A	4.50A	4.25A	4.00A

Contact Resistance: 6 milliohms max.
Dielectric Withstanding Voltage: 1500V AC
Insulation Resistance: 50K Megohms min.

Mechanical

Contact Insertion Force: 1.8kg (4 lb) max.
Contact Retention to Housing: 3.6kg (8 lb) min.
Wire Pull-Out Force: 20 lb max./18 AWG
Normal Force: 0.75kg (1.65 lb)
Durability: 25 cycles max.

Physical

Contact: Brass or Phosphor Bronze
Plating: See Table
Operating Temperature: Phosphor Bronze—0 to +75°C
Brass—0 to +50°C

Order No.						Wire Size AWG	Insulation OD	Series	Material	Lead-free
Tin Plating		Gold Plating No. 1		Gold Plating No. 2						
Reel	Bag	Reel	Bag	Reel	Bag					
08-52-0071	08-52-0072	08-58-0121	08-58-0122	08-65-0114	08-65-0115	18-20	2.79 (.110)	max. 2478	Phosphor Bronze	Yes
08-50-0105	08-50-0106	08-56-0105	08-56-0106	08-55-0103	08-55-0104	18-20	2.79 (.110)	max. 2478	Brass	
08-50-0133	08-50-0134	08-58-0125	08-58-0126	08-65-0116	08-65-0117	22-26	1.65 (.065)	max. 2578	Phosphor Bronze	
08-50-0107	08-50-0108	08-56-0107	08-56-0108	08-55-0105	08-55-0106	22-26	1.65 (.065)	max. 2578	Brass	

Recommended wire range assumes stranded wire
Plating No. 1: 20µ" min. Gold in contact area with a flash overall
Plating No. 2: 15µ" min. Gold in contact area only