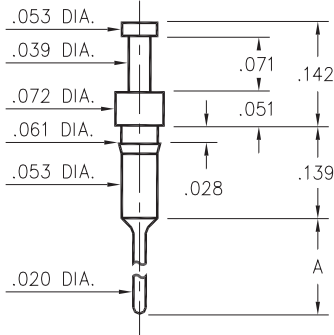


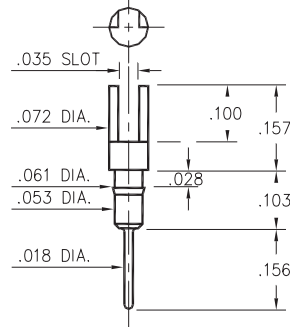
### 3408



Basic Part Number	Pin Length A
3408-1	.121
3408-2	.181

**3408-X-00-XX-00-00-03-0**  
Press-fit in .057 mounting hole

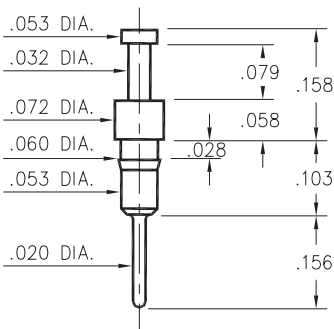
### 0270/0282



Basic Part Number	Pin Material
0270-0	Ph Br 544 (B2)
0282-0	Brass 360

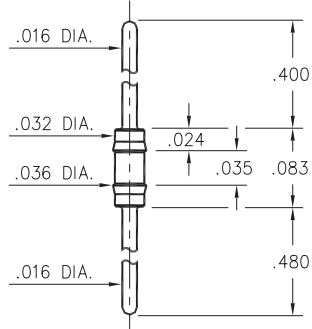
**02XX-0-01-XX-00-00-03-0**  
Press-fit in .057 mounting hole

### 0700



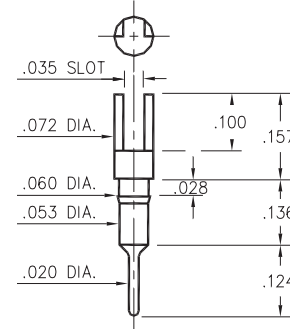
**0700-0-00-XX-00-00-03-0**  
Press-fit in .057 mounting hole

### 8006



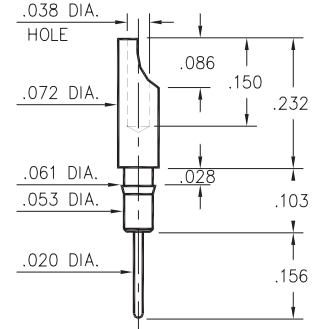
**8006-0-00-XX-00-00-03-0**  
Press-fit in .034 mounting hole

### 0265



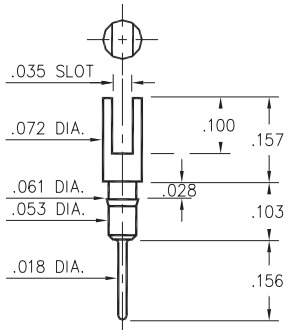
**0265-0-01-XX-00-00-03-0**  
Press-fit in .057 mounting hole

### 0275



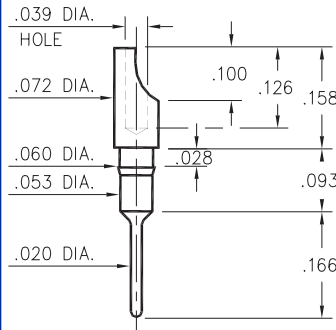
**0275-0-01-XX-00-00-03-0**  
Press-fit in .057 mounting hole  
Pin material is Ph. Br. 544 (B2)

### 0272



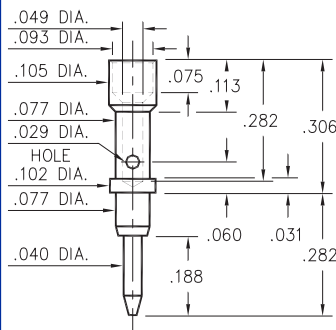
**0272-0-01-XX-00-00-03-0**  
Press-fit in .057 mounting hole

### 8000



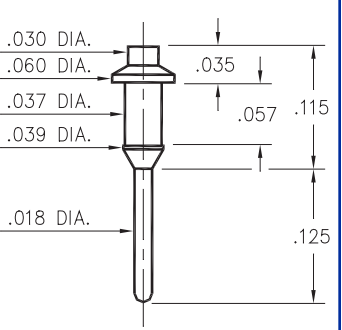
**8000-0-01-XX-00-00-03-0**  
Press-fit in .057 mounting hole

### 3603



**3603-0-07-XX-00-00-08-0**  
Annealed  
#20 Crimp barrel

### 9976



**9976-0-00-XX-00-00-03-0**  
Press-fit in .038 mounting hole

#### SPECIFICATIONS

**PIN MATERIAL:**  
Brass Alloy 360, 1/2 Hard  
(Except where noted)

**DIMENSION IN INCHES**  
**TOLERANCES ON:**  
LENGTHS: ±.005  
DIAMETERS: ±.002  
ANGLES: ± 2°

**ORDER CODE: XXXX - X - 0X - XX - 00 - 00 - 0X - 0**

**BASIC PART #**

**SPECIFY PIN FINISH:**  
01 200µ" TIN/LEAD OVER NICKEL  
80 200µ" TIN OVER NICKEL  
15 10µ" GOLD OVER NICKEL  
21 20µ" GOLD OVER NICKEL  
34 50µ" GOLD OVER NICKEL

