



We Tame Photons to Work for You!



Products > High Power LEDs > SuperBeamLED



**Features / Options**

- ▶ State-of-the-Art, High Brightness Chip Technology
- ▶ Choice of Colors and Lens Finishes
- ▶ Maintenance Free Long Life

**Applications / Uses**

- ▶ Flashlights
- ▶ Illuminating Signs/Artwork
- ▶ Decorative Lighting
- ▶ Backlighting

Part Number:	Brightness	Dice Material	Emitted Color	Peak Wavelength	Epoxy Lens	Operating Typ Vf (V)	Intensity Typ, mcd @ 20 mA	View Angle 2x Theta		
SSL-LX100T123SIC	High	AlInGaP	Red	630	Clear	2.0	35 lm	25		—
SSL-LX100T123SYC	High	AlInGaP	Yellow	590	Clear	2.0	35 lm	25		—
SSL-LX100T123UPGC	High	InGaN	Green	525	Clear	3.5	55 lm	25		—

UNCONTROLLED DOCUMENT

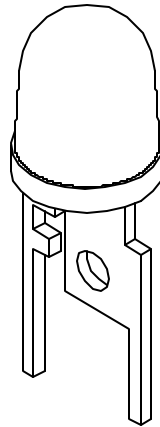
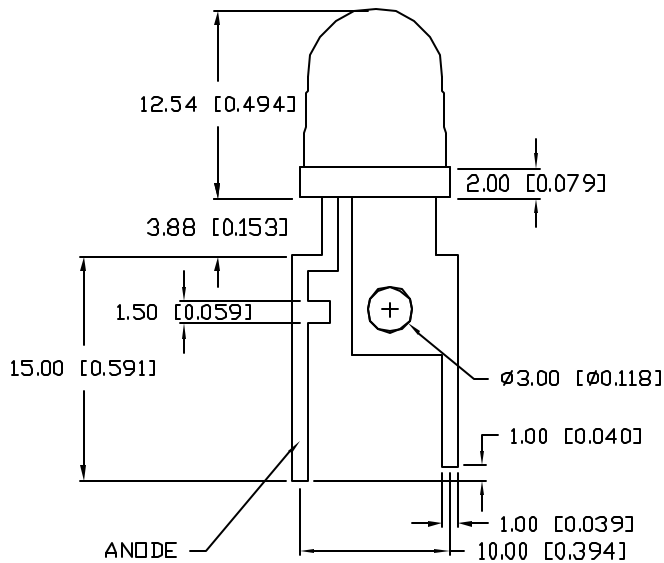
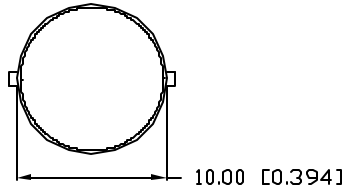
SC:0.50

PART NUMBER

REV.

SSL-LX100T123UPGC

PRELIMINARY IN P/N DIR



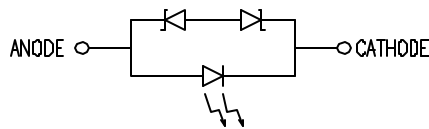
ELECTRO-OPTICAL CHARACTERISTICS  $T_A=25^{\circ}\text{C}$

PARAMETER	SYMBOL	MIN	TYP	MAX	UNITS	TEST COND
PEAK WAVELENGTH			525		nm	
FORWARD VOLTAGE	$V_f$		3.5	4.0	V	$I_f=350\text{mA}$
REVERSE VOLTAGE	$V_r$	5			V	$I_r=10\mu\text{A}$
AXIAL INTENSITY	$I_v$	45		65	lm	$I_f=350\text{mA}$
VIEWING ANGLE			25		$2x$ theta	
EMITTED COLOR:	GREEN					
EPOXY LENS FINISH:	CLEAR					

LIMITS OF SAFE OPERATION AT  $25^{\circ}\text{C}$

PARAMETER	MAX	UNITS
PEAK FORWARD CURRENT*	500	mA
STEADY CURRENT	350	mA
POWER DISSIPATION	1.4	W
DERATE FROM $25^{\circ}\text{C}$	-1.2	mW/ $^{\circ}\text{C}$
OPERATING, STORAGE TEMP.	-40 TO +85	$^{\circ}\text{C}$
SOLDERING TEMP.	260	$^{\circ}\text{C}$
2.0mm FROM BODY	3	SEC

\* $t < 10\mu\text{s}$



CAUTION: STATIC SENSITIVE DEVICE  
FOLLOW PROPER E.S.D. HANDLING PROCEDURES  
WHEN WORKING WITH THIS PART.



UNCONTROLLED DOCUMENT

\*UNLESS OTHERWISE SPECIFIED TOLERANCES PER DECIMAL PRECISION ARE: X=±1 (±0.039), XX=±0.5 (±0.020), XXX=±0.25 (±0.010), XXXX=±0.127 (±0.005). LEAD SIZE=±0.05 (±0.002), LEAD LENGTH=±0.75 (±0.030), MIN=+0.00 DECIMAL PRECISION MAX.=+0.00 DECIMAL PRECISION

REV.

PART NUMBER

SSL-LX100T123UPGC

CONFIDENTIAL INFORMATION

THE INFORMATION CONTAINED IN THIS DOCUMENT IS THE PROPERTY OF LUMEX INC. EXCEPT AS SPECIFICALLY AUTHORIZED IN WRITING BY LUMEX INC, THE HOLDER OF THIS DOCUMENT SHALL KEEP ALL INFORMATION CONTAINED HEREIN CONFIDENTIAL AND SHALL PROTECT SAME IN WHOLE OR IN PART FROM DISCLOSURE AND DISSEMINATION TO ALL THIRD PARTIES.

RELIABILITY NOTE

OUR MANY YEARS OF EXPERIENCE DATA ACCUMULATION INDICATE THAT SOLDER HEAT IS A MAJOR CAUSE OF EARLY AND FUTURE FAILURE. PLEASE PAY ATTENTION TO YOUR SOLDERING PROCESS.



∅10.00mm 1 WATT THROUGH HOLE, HIGH POWER LED,  
525nm InGaN GREEN LED, WATER CLEAR LENS.

DRAWN BY:

JN

CHECKED BY:

APPROVED BY:

DATE: 12.19.07

PAGE: 1 OF 1

SCALE: N/A