



We Tame Photons to Work for You!



Products

Search Tools

Solutions

Literature

Tech Notes

Support

Corporate

Products > LED Indicators > PCB Indicators > Assembled Housing > Round > 3mm > Triple Tower > 2.54mm Protrusion



Features / Options

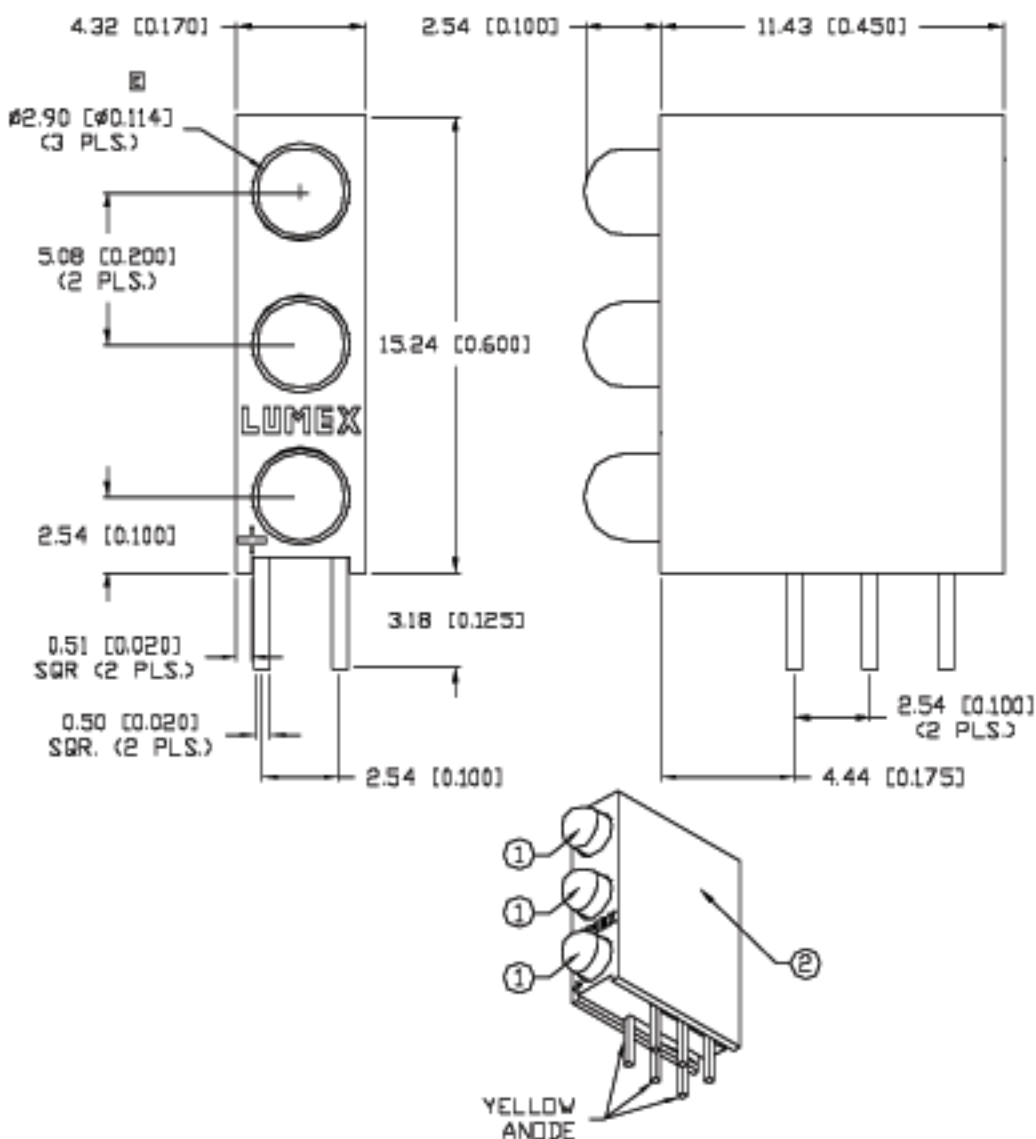
- ▶ Vertical Positioning
- ▶ Multi-Unit Construction
- ▶ Polarity Orientation Holder
- ▶ Choice of Colors and Lenses

Applications / Uses

- ▶ Board Level Status Indicators
- ▶ Board Level Fault Indicators
- ▶ Warning/Alarm Signaling
- ▶ Circuit Fault Finder Indicators

Part Number:		Brightness	Material	Emitted Color	Wavelength	Intensity	View Angle	Voltage		
SSF-LXH340GGGD		STANDARD	GaP	Green	565	15	80	2.1		
SSF-LXH340IIID		STANDARD	GaAsP	Red	630	20	80	2.0		
SSF-LXH340LGGGD		STANDARD	GaP	Green	565	15	80	2.1		
SSF-LXH340LIID		STANDARD	GaAsP	Red	630	20	80	2.0		
SSF-LXH340LYYYD		STANDARD	GaAsP	Yellow	585		80	1.8		
SSF-LXH340SISISID		HIGH	AllnGaP	Red	636	100	80	2.0		
SSF-LXH340SOSOSOD		HIGH	AllnGaP	Orange	610	100	80	2.0		
SSF-LXH340SRSRSRD		HIGH	GaAlAs	Red	660		80	1.8		
SSF-LXH340SUGUGGPD		HIGH	AllnGaP	Green	574	60	80	2.2		
SSF-LXH340SYSYSYD		HIGH	AllnGaP	Yellow	590	100	80	2.0		
SSF-LXH340USBSBSD		HIGH	InGaN	Blue	470	80	80	3.5		
SSF-LXH340YYYYD		STANDARD	GaAsP	Yellow	585		80	2.1		

UNCONTROLLED DOCUMENT



*UNLESS OTHERWISE SPECIFIED TOLERANCES PER DECIMAL PRECISION ARE: X=±1 (±0.050), XX=±0.5 (±0.020), XXX=±0.25 (±0.010), XXXX=±0.127 (±0.005). LEAD SIZE=±0.05 (±0.002), LEAD LENGTH=±0.75 (±0.030). MIN.=+DECIMAL PRECISION -0.00, MAX.=+0.00 -DECIMAL PRECISION.

PART NUMBER
SSF-LXH340YYYD

REV.
E

REV.	E.C.N. NUMBER AND REVISION COMMENTS	DATE
A	CHANGED LEAD LENGTHS./	8/9/93
B	CHANGED LEAD LENGTHS./	8/30/93
C	CHG'D. SOLDER TEMPS & STAND-OFF/	8/15/94
D	CHG'D STANDOFF, UPDATED SPECS./	3/6/95
E	E.C.N. #10244.	9/23/96

ELECTRO-OPTICAL CHARACTERISTICS $T_A=25^\circ\text{C}$ $I_f=20\text{mA}$

PARAMETER	YELLOW	UNITS	TEST COND
PEAK WAVELENGTH	585	nm	
FORWARD VOLTAGE (TYP.)	2.1	V _f	
FORWARD VOLTAGE (MAX.)	2.5	V _f	
REVERSE VOLTAGE	5.0	V _r	$I_f=100\mu\text{A}$
AXIAL INTENSITY	30	md	$I_f=20\text{mA}$
VIEWING ANGLE	60	2x theta	

EPoxy LENS FINISH: YELLOW DIFFUSED

LIMITS OF SAFE OPERATION AT 25°C PER DIE

PARAMETER	COLORS	MAX	UNITS
PEAK FORWARD CURRENT*		150	mA
STEADY CURRENT		30	mA
POWER DISSIPATION		105	mW
DERATE FROM 25°C		-1.2	mW/°C
OPERATING, STORAGE TEMP.		-40 TO +85	°C
SOLDERING TEMP.		+250	°C
2.0mm FROM BODY			3 SEC. MAX

* $t < 10\mu\text{s}$

NOTES:

1. SSL-LX3044YD, YELLOW LED. (3 PCS.)
2. SSH-LXH340 HOLDER, BLACK NYLON, 94V-0.

UNCONTROLLED DOCUMENT

REV.	PART NUMBER
E	SSF-LXH340YYYD

T-3mm (T-1) RIGHT ANGLE FAULT INDICATOR HOLDER,
POS. 1,2,3: 585nm YELLOW,
COLOR DIFFUSED PER POSITION.

CONFIDENTIAL INFORMATION
THE INFORMATION CONTAINED IN THIS DOCUMENT IS THE PROPERTY OF LUMEX INC. EXCEPT AS SPECIFICALLY AUTHORIZED IN WRITING BY LUMEX INC., THE HOLDER OF THIS DOCUMENT SHALL KEEP ALL INFORMATION CONTAINED HEREIN CONFIDENTIAL AND SHALL PROTECT SAME IN WHOLE OR IN PART FROM DISCLOSURE AND DISSEMINATION TO ALL THIRD PARTIES.

RELIABILITY NOTE
OUR MANY YEARS OF EXPERIENCE DATA ACCUMULATION INDICATE THAT SOLDER HEAT IS A MAJOR CAUSE OF EARLY AND FUTURE FAILURE. PLEASE PAY ATTENTION TO YOUR SOLDERING PROCESS.

DRAWN BY:	CHECKED BY:	APPROVED BY:
JG		