

## TREADLITE II FOOTSWITCH



**Treadlite II Footswitch**

### Environmental Ratings:

EN 60529 Degree of Protection IP20

EN 60529 Degree of Protection IP68

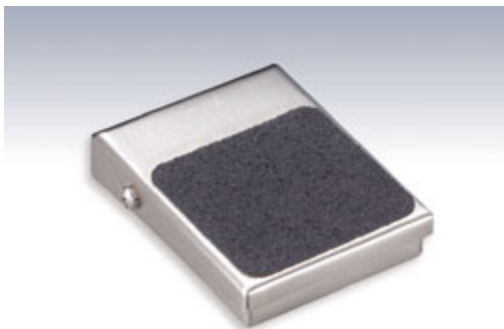
(For Stainless Steel models: T-91-SWANOS, T-91-SWANO3S and T-91-SWANO38S)

### Key Benefits

This foot switch has a handsome steel housing that is painted black with nonskid base pad and foot treadle pad. The low profile and light pressure required to operate reduces operator fatigue. The Maintained Contact version incorporates a positive over center rocker type action.

Size: 3-1/2" x 2-5/8" x 1"

Weight: 7 oz.



**Treadlite II Stainless Steel Footswitch**

The TWIN T-91-SC48 foot switch consists of two single models mounted on a single cast aluminum base with a divider bar between pedals which helps prevent accidental operation of both foot switches at one time.

Size: 7-15/16" x 5-9/16" x 1-3/8"

Weight: 4 lbs.

- *Special Twin, Triple and Quad baseplates with wiring channel available on special order.*

The T-91-SWANOS, T-91-SWANO3S and T-91-SWANO38S models have formed stainless steel housings. The three models also meet the requirements of IP68 as well as NEMA and UL Enclosure Types 1, 4X, 6 & 6P.

### SPECIFICATIONS

(Special variations are available to the O.E.M. on special order on the models listed below)

**⚠ WARNING**

	CATALOG NUMBER	DESCRIPTION	CIRCUIT	FORM	ELECTRICAL RATINGS
	T-91-S	Momentary	SPDT	C	15 A 125-250 VAC 1/2 H.P. 125-250 VAC
	TWIN T-91-S	Momentary	Each Side SPDT	C	
	T-91-D	Maintained	SPDT	C	
	T-91-SC36*	Momentary	SPDT Wired N.O.	A	10 A 125-250 VAC 1/2 H.P. 125-250 VAC
	T-91-DC36*	Maintained	SPDT Wired N.O.	A	
	T-91-SC36A**	Momentary	SPDT Wired N.O.	A	15 A 125-250 VAC 1/2 H.P. 125-250 VAC
	Twin T-91-SC48***	Momentary	Both Sides SPDT Wired N.O.	A	13 A 125-250 VAC 1/2 H.P. 125-250 VAC
	T-91-SC3±	Momentary	SPDT Wired N.O.	A	10 A 125 VAC

	T-91-DC3±	Maintained	SPDT Wired N.O.	A	1/2 H.P. 125 VAC
	T-91-SC3A±±	Momentary	SPDT Wired N.O.	A	15 A 125 VAC 1/2 H.P. 125 VAC
	T-91-PS±±±	Momentary	SPST Wired N.O.	A	3 A 30 VAC Max. Class 2 Circuits Only
	T-91-PSNC±±±	Momentary	SPST Wired N.C.	B	
	T-91-SWANOS°	Momentary	SPST N.O.	A	3 A 125-250 VAC
	T-91-SWANO3S°°	Momentary	SPST Wired N.O.	A	3 A 125 VAC
	T-91-SWANO38S°°°	Momentary	SPST Wired N.O.	A	3 A 125-250 VAC

**BOLD COPY INDICATES STOCK ITEM**

**⚠ WARNING THESE ARE LOW POWER DEVICES AND MUST BE USED ONLY IN THOSE APPLICATIONS WHERE SUITABLE DESIGN CONSTRAINTS AND SAFETY PRECAUTIONS ARE MET.**

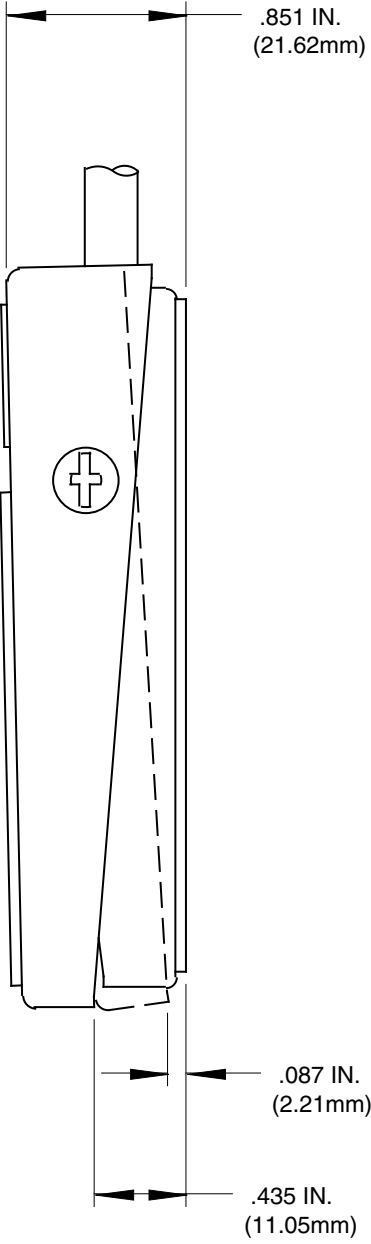
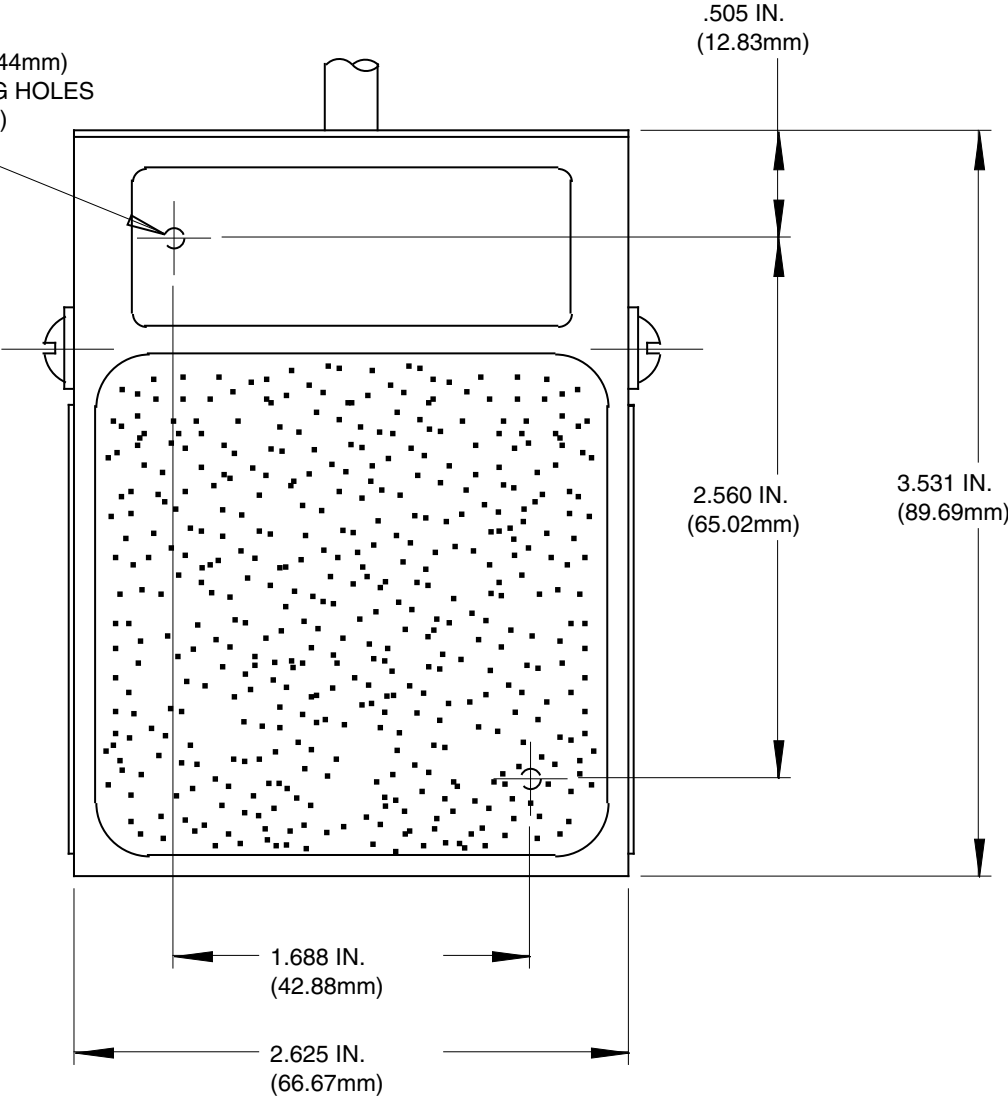
- \* Supplied with 6 ft. 18/3 cord without plug. Green lead grounded.
- \*\* Supplied with 6 ft. 14/3 cord without plug. Green lead grounded.
- \*\*\* Supplied with 8ft. 16/4 cord without plug. Green lead grounded.
- ± Supplied with 6 ft. 18/3 cord with 3 prong series plug. Green lead grounded.
- ±± Supplied with 8 ft. 14/3 cord with 3 prong series plug. Green lead grounded.
- ±±± Supplied with 8 ft. 22/1 audio cable with 2 contact .250 diameter phone plug, not grounded.
- ° Supplied without cordset.
- °° Supplied with 8 ft. 18/3 cord and 3 prong series plug, green lead grounded.
- °°° Supplied with 8 ft. 18/3 cord without plug, green lead grounded.

# Treadlite II Momentary Model

NOTE: ALL DIMENSIONS ARE FOR REFERENCE ONLY.



.096 IN. (2.44mm)  
MOUNTING HOLES  
(2 PLACES)



## EN 60529 Degree of Protection IP20 (IP68 Upon Request)

### Driptight • Dusttight • Watertight (Available) COMPACT VERSATILE LOW PROFILE DESIGN

#### Materials of Construction:

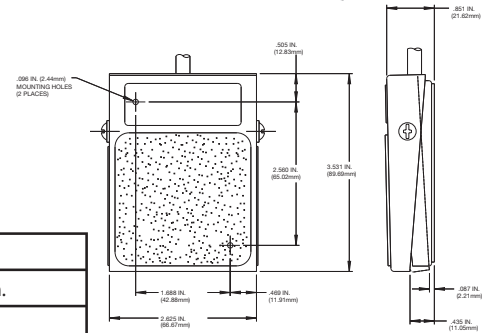
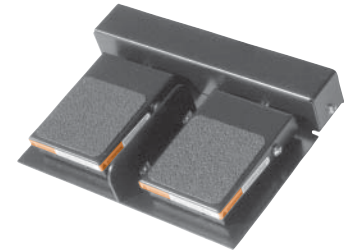
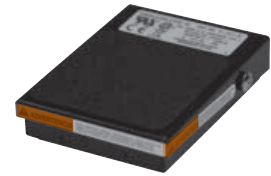
- Steel housing is painted black
- Two single models mounted on a twin base plate with wiring channel
- A divider bar between pedals which helps prevent accidental operation of both switches at one time

#### Features & Benefits:

- Incorporates a positive over center rocker type action
- Nonskid base pad and foot treadle pad
- 2 Holes provided for rigid mounting to floor or equipment
- The low profile and light pressure required to operate reduces operator fatigue

#### Options:

- Special Twin, Triple & Quad baseplates with wiring channel available on special order
- Stainless Steel Model Available (See Treadlite II - Stainless Steel" on page 44 for details)
- Mounting Plate Available
- Heavy gauge steel guard available (See "Accessories - Guards" on page 74 & 75 for details)



**WARNING** THE T-91-PS and T-91-PSNC ARE LOW POWER DEVICES AND MUST BE USED ONLY IN THOSE APPLICATIONS WHERE SUITABLE DESIGN CONSTRAINTS AND SAFETY PRECAUTIONS ARE MET.

Single		Twin	
Size (HxWxD):	3.50 x 2.63 x 1.00 In.	Size (HxWxD):	1.48 x 6.12 x 3.56 In.
Weight:	7 oz.	Weight:	1.5 lbs.

#### WARNING SEE PRODUCT WARNING ON PAGE 8

SPECIFICATIONS (Special variations are available to the O.E.M. on special order on the models listed below)

AGENCY APPROVALS	EN 60529 Degree of Protection	CATALOG NUMBER	DESCRIPTION	CIRCUIT	FORM	ELECTRICAL RATINGS
	IP20	T-91-S	Single / Momentary	SPDT	C	15 A 125-250 VAC 1/2 H.P. 125-250 VAC
	IP20	Twin T-91-S9	Single / Momentary	SPDT Each Side	C	15 A 125-250 VAC 1/2 H.P. 125-250 VAC
	IP20	T-91-SC36 <sup>1</sup>	Single / Momentary	SPDT Wired N.O.	A	10 A 125-250 VAC 1/2 H.P. 125-250 VAC
	IP20	T-91-SCEA <sup>7</sup>	Single / Momentary	SPDT Wired N.O.	A	10 A 125-250 VAC 1/2 H.P. 125-250 VAC
	IP20	T-91-SC36A <sup>2</sup>	Single / Momentary	SPDT Wired N.O.	A	15 A 125-250 VAC 1/2 H.P. 125-250 VAC
	IP20	T-91-SC3 <sup>4</sup>	Single / Momentary	SPDT Wired N.O.	A	10 A 125 VAC 1/2 H.P. 125 VAC
	IP20	T-91-SC3A <sup>5</sup>	Single / Momentary	SPDT Wired N.O.	A	15 A 125 VAC 1/2 H.P. 125 VAC
	IP20	T-91-PS <sup>6</sup>	Single / Momentary	SPDT Wired N.O.	A	3 A 30 VAC Max. Class 2 Circuits Only
	IP20	T-91-PSNC <sup>6</sup>	Single / Momentary	SPDT Wired N.C.	B	3 A 30 VAC Max. Class 2 Circuits Only
	IP20	T-91-SCE <sup>8</sup>	Single / Momentary	SPDT Wired N.O.	A	16 A 125-250 VAC 1/2 H.P. 125-250 VAC
	IP20	T-91-SE	Single / Momentary	SPDT	C	16 A 125-250 VAC 1/2 H.P. 125-250 VAC
	IP20	Twin T-91-SC48 <sup>3</sup>	Twin / Momentary	SPDT Wired N.O. Both Sides	A	13 A 125-250 VAC 1/2 H.P. 125-250 VAC

<sup>1</sup>Supplied with 6 ft. 18/3 cord without plug. Green lead grounded. <sup>2</sup>Supplied with 6 ft. 14/3 cord without plug. Green lead grounded. <sup>3</sup>Two T-91-S models mounted on a common steel baseplate, with a wiring channel & supplied with 8 ft. 16/4 cord without plug, Green lead grounded. <sup>4</sup>Supplied with 6 ft. 18/3 cord with 3 prong series plug. Green lead grounded. <sup>5</sup>Supplied with 8 ft. 14/3 cord with 3 prong series plug. Green lead grounded. <sup>6</sup>Supplied with 8 ft. 22/1 audio cable with 2 contact .250 diameter phone plug, not grounded. <sup>7</sup>Supplied with 2 meter 18/3 cord with brown, blue & green/yellow leads. <sup>8</sup>Supplied with 2 meter 14/3 cord <sup>9</sup>Two T-91-S models mounted on common cast aluminum base, no wiring Channel