



Part Number Search

Home

Company Overview

Products

Technical Help

Contact Us

Legal



Order-On-Line, Application Notes, On-Line Services

MOTORS

- Brushless DC
- Synchronous
- Stepping
- Hybrid Stepper
- Induction
- Brushed DC
- Linear

CONTROLLERS

CAPACITORS



## STEPPING MOTOR FAMILY

### Series SAS, SBS Geared Stepping Motor



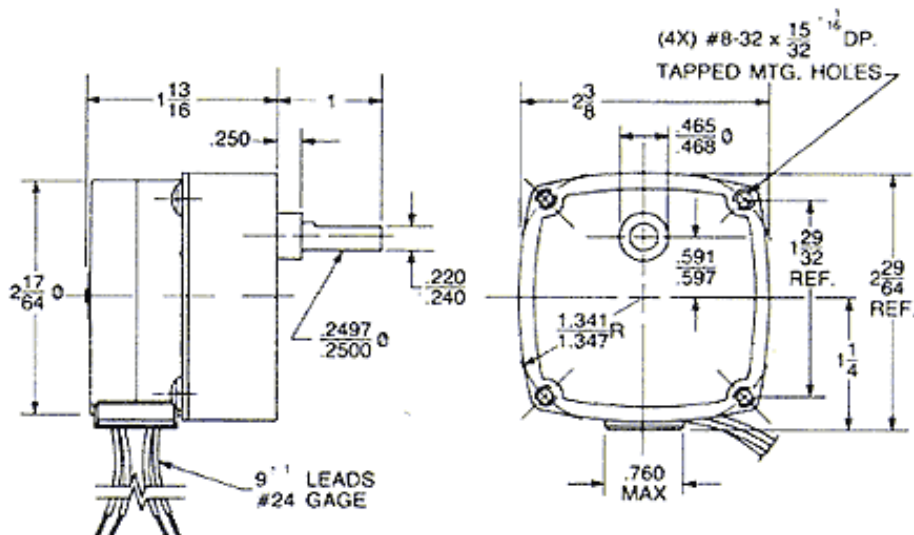
The geared SAS and SBS Stepping Motors have a step angle range of 0.0125° to 7.5° and output speeds at 200 p/s from 0.42 to 250.0 RPM.

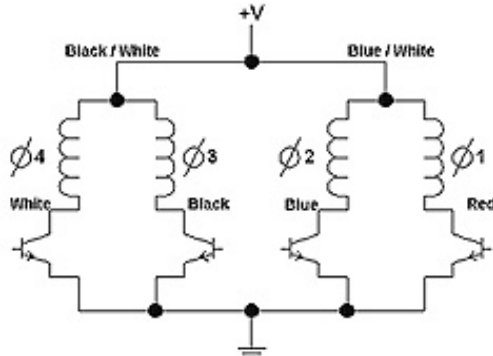
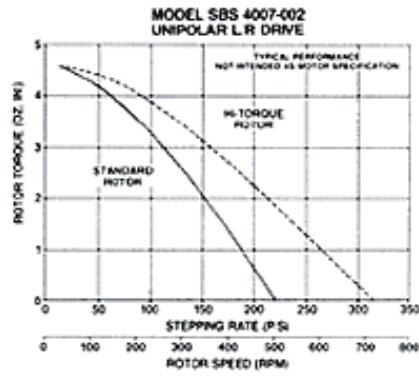
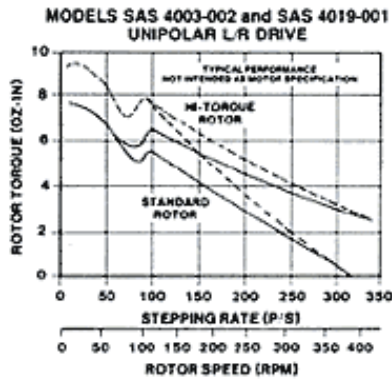
All gears are hobbled to AGMA 7 quality. Pinions are extruded from a special steel with a modified long addendum tooth form to provide higher strength. Pinions are held to the same AGMA 7 quality level as the gears. Both pinion and gear teeth are case hardened for wear resistance and rotate upon hardened and ground steel studs.

Notes:

- Sleeve bearings are standard. Ball bearings may be specified.

### SAS, SBS Geared





φ4 White	φ3 Black	φ2 Blue	φ1 Red
-------------	-------------	------------	-----------

CCW ROTATION ↑	1	0	1	0	↓ CW ROTATION
	1	0	0	1	
	0	1	0	1	
	0	1	1	0	

**1 = ON, 0 = OFF**

**SWITCHING SEQUENCE**

[Change to Metric](#)

[View Printable Format \(Data Sheet\)](#)

[View Printable Format \(Parts Table\)](#)

To purchase one of the motors listed below, you must be logged into your MyHurst account, then simply click the part number to add the item to your Shopping Cart!

Model	Part Number	Reduction	Step Angle (degrees)	Rated Torque @ 175 p/s (oz-in)	Holding Torque (oz-in)	Detent Torque (oz-in)	Output Speed (RPM)	Maximum gear train loading	Input Power (watts)	Nominal Voltage (VDC)	Winding Resistance (ohms)	Weight (oz)	Controller Chip 220001
SAS	4004-001	600	0.0125	200			0.42	X	8	12	36	16	X
SAS	4004-002	300	0.025	200			0.83	X	8	12	36	16	X
SAS	4004-021	300	0.025	200			0.83		8	6		16	X
SAS	4004-004	150	0.05	185			1.67		8	12	36	16	X
SAS	4004-006	75	0.1	162			3.33	X	8	12	36	16	X
SAS	4004-027	75	0.1	162			3.33		8	24		16	X
SAS	4004-009	37.5	0.2	126			6.67		8	12	36	16	X
SAS	4024-003	37.5	0.2	126			6.67		8	12	36	16	X
SAS	4004-010	30	0.25	101			8.33		8	12	36	16	X
SAS	4004-026	30	0.25	101			8.33		8	6		16	X
SAS	4004-012	15	0.5	54			16.67		8	12	36	16	X
SAS	4004-014	10	0.75	36			25		8	12	36	16	X
SAS	4004-025	10	0.75	36			25		8	24		16	X
SAS	4004-019	2	3.75	7.2			125		8	12	36	16	X
SBS	4008-002	300	0.05	200			1.67	X	8	12	36	16	X
SBS	4008-006	75	0.2	107			6.67		8	12	36	16	X
SBS	4008-010	30	0.5	46			16.67		8	12	36	16	X
SBS	4008-012	15	1	23			33.33		8	12	36	16	X
SBS	4008-019	2	7.5	3.3			250		8	12	36	16	X