



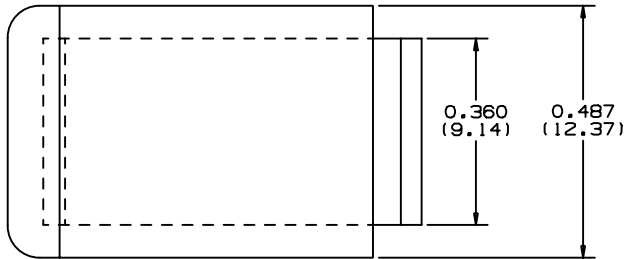
PMCC38H25-C



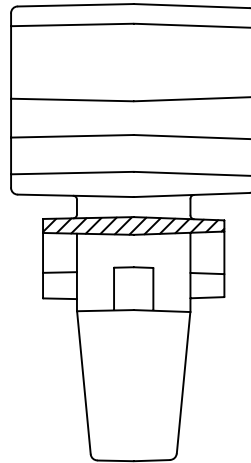
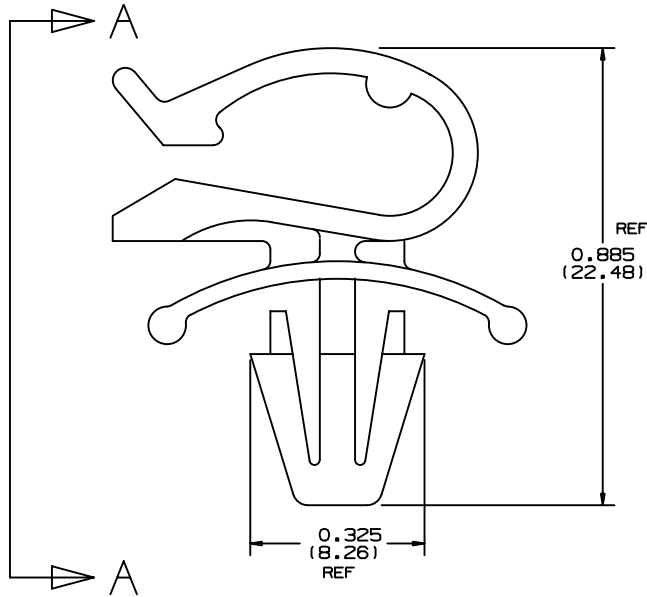
- Cables are easily snapped into or out of clips
- The winged design holds mount in place even in applications where vibration is present
- Design of wing provides added stability

■ Part Number	PMCC38H25-C
■ RoHS Compliancy Status	Compliant
■ Part Description	Push Barb Mount Cord Clip
■ Product Type	Mounting Device
■ Material	Nylon 6.6
■ Color	Natural
■ UL Recognized	E136577
■ Height (In.)	.38
■ Height (mm)	9.7
■ Length (In.)	.50
■ Length (mm)	12.7
■ Width (In.)	.50
■ Width (mm)	12.7
■ Environment	Indoors
■ Flammability Rating	UL94 V-2
■ Max. Bundle Diameter (In.)	.38
■ Max. Bundle Diameter (mm)	9.6
■ Max. Panel Thickness (In.)	.105
■ Max. Panel Thickness (mm)	2.7
■ Mounting Method	Push Barb
■ Panel Hole Diameter (In.)	.250
■ Panel Hole Diameter (mm)	6.4
■ Pricing Description	Cord Clip, Push Mount, .38" (9.7mm) Bundle, NAT
■ Total Height (In.)	.89
■ Total Height (mm)	22.9
■ Min. Order UOM	PC
■ Min. Order Qty.	100

THIS COPY IS PROVIDED ON A RESTRICTED BASIS AND IS NOT TO BE USED IN ANY WAY DETRIMENTAL TO THE INTERESTS OF PANDUIT CORP.



PANDUIT PART NUMBER	MAXIMUM CABLE DIA. IN (MM)	PANEL DIMENSIONS		WEIGHT	
		THICKNESS IN (MM)	HOLE SIZE IN (MM)	lbs/100 pcs (g)/100 pcs	
PMCC38H25	0.38 (9.6)	0.105 MAX. (2.7)	0.250 (6.4)	0.26 (120)	



FRONT VIEW "A-A"

NOTES:

1. SEE CURRENT PRICE SHEET FOR PART NUMBER SUFFIX DESIGNATION FOR PACKAGE SIZE.
2. PARTIAL SECTION ON FRONT VIEW IS SHOWN FOR CLARITY.

DIMENSIONS IN BRACKETS ARE METRIC [mm]

CAD FILENAME/LAYERS G00239DA_PB_PMCC38H25_03

PANDUIT CORP. TINLEY PARK, ILLINOIS

PMCC38H25
PUSH MOUNT CORD CLIP

UNLESS OTHERWISE SPECIFIED, DIMENSIONAL TOLERANCES ARE:
(.X) ±0.05 (1.3) (.XXX) ±0.010 (0.25)
(.XX) ±0.02 (0.5) ANGLES ±5°

UNLESS OTHERWISE SPECIFIED, ALL DIMENSIONS ARE GIVEN IN INCHES, THIRD ANGLE PROJECTION.

DRAWN BY CBJ

MAT'L:

SCALE NONE

DATE 3-13-96

NYLON 6/6

DRAWING NO.

GB0239DA

DWG

A

CHK'D

REV	DATE	BY	CHK	DESCRIPTION	ECN	R	CUST	SUP	Q.C.
3	11-7-01	LGG		REVISED METRIC DIMS & CHG 1 DIM FROM .313 (7.950) TO .325 (8.26).	GB0239DA	3			
2	6/27/01	LGG		ADDED REF TO DIM	GB0239DA	2			
1	3-18-96	CBJ		REVISED DIMENSIONS	GB0239DA	1			
R	3-13-96	CBJ		INITIAL RELEASE	GB0239DA	R			