

LTM2500C2

Lashing Tie Mount-UV Resistant .733"X1.46" - PA66UV, Black, T250 Cable Tie, .25" Screw, 100/pk

Article Number: 151-00358

Part Number: LTM2500C2

Type: LTM250

Material: PA66UV



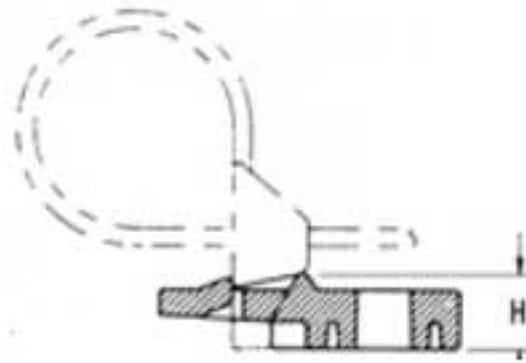
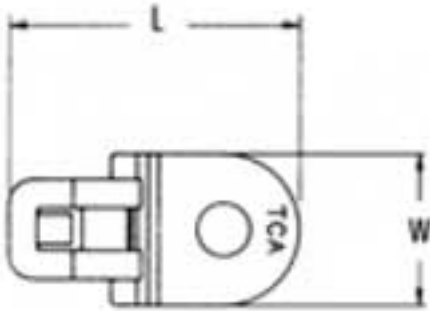
1. Base Data

Part No.	LTM2500C2
Type	LTM250
Color	Black (BK)
Features	The strap is parallel to the mount when inserted into the head.
Application	The lashing tie mount is recommended for indoor or outdoor wall mount cable applications.

Application Method

The lashing tie mount is designed to snap into the T250 lashing tie. The tie head is assembled perpendicular to the mount.

2. Product Dimensions



Length (L) 1.46 " / 37.08 mm

Width (W) .733 " / 18.62 mm

Max. Cable Tie Width 0.49 " / 12.5 mm

Height (H) .378 " / 9.60 mm

Mounting Hole Ø .25 " / 6.5

4. Material and Specifications

Material Polyamide 6.6 UV-resistant (PA66UV)

Material Shortcut PA66UV

Flammability UL94 V2

Operating Temperature -40 °F to +185 °F (-40 °C to +85 °C) continuous

Logistic and Packaging

Packaging Type bag

Pkg. Qty. 100

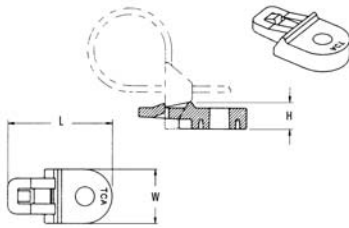
Carton Qty. 3000

UPC 08930602252

Cable Tie Mounts

Lashing Tie Mounts

The lashing tie mount is designed to snap into the T250 lashing tie. The tie head is assembled perpendicular to the mount. The strap is parallel to the mount when inserted into the head. The lashing tie mount is recommended for indoor or outdoor wall mount cable applications.



Material Data	
Material	Polyamide 6.6 UV-resistant (PA66UV)
Operating Temperature	-40 °F to +185 °F (-40 °C to +85 °C) continuous
Flammability	UL94 V2



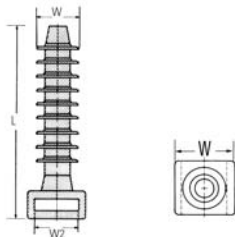
Product Selection

Article No.	Part No.	Type	Cable Tie Series	Mounting	Width (W)	Length (L)	Height (H)	Color	Pkg. Qty.
					in. (mm)	in. (mm)	in. (mm)		
151-00358	LTM2500C2	LTM250	T250	.25" screw	.733" (18.62)	1.46" (37.08)	.378" (9.60)	Black	100
151-00293	LTM2500H4	LTM250			.733" (18.62)	1.46" (37.08)	.378" (9.60)	Black	500

Dimensions are approximate and subject to technical changes. Use **Part No.** for ordering and **Type** for specification purposes.

Masonry Mounts

Masonry mounts provide a permanent method of attaching wire and cable to masonry surfaces. HellermannTyton's masonry mounts simply tap into predrilled holes and can be used for indoor and outdoor applications.



Material Data	
Material	Polyamide 6.6 (PA66)
Operating Temperature	-40 °F to +185 °F (-40 °C to +85 °C) continuous
Flammability	UL94 V2



Product Selection

Article No.	Part No.	Type	Cable Tie Series	Mounting Hole Ø	Min. Depth	Length (L)	Width (W)	Width (W2)	Width (W3)	Color	Pkg. Qty.
				in. (mm)	in. (mm)	in. (mm)	in. (mm)	in. (mm)	in. (mm)		
151-29800	MMB00C2	MMB0	T18 - T50	.188" (4.7)	1.0" (25.4)	1.185" (30.1)	.355" (9.02)	.218" (5.54)	.236" (5.99)	Black	100
151-00325	MMB00M4	MMB0		.188" (4.7)		1.185" (30.1)	.355" (9.02)	.218" (5.54)	.236" (5.99)	Black	1000
151-00116	MMB.50C2	MMB.5		.25" (6.25)		1.244" (31.60)	.375" (9.53)	.220" (5.59)	.308" (7.82)	Black	100
151-30001	MMB.50M4	MMB.5		.25" (6.25)	1.244" (31.60)	.375" (9.53)	.220" (5.59)	.308" (7.82)	Black	1000	
151-00326	MMB10C2	MMB1		.312" (8.0)	1.5" (38.10)	1.71" (43.49)	.508" (12.9)	.374" (9.50)	.362" (9.19)	Black	100
151-00327	MMB10H4	MMB1		.312" (8.0)		1.71" (43.49)	.508" (12.9)	.374" (9.50)	.362" (9.19)	Black	500

Dimensions are approximate and subject to technical changes. Use **Part No.** for ordering and **Type** for specification purposes.