

IT50L9C2

Identification Tie, 50lb. 15.35" Max Bun Dia 3.94" Mark Pad Size .5" X 2.20" PA66, Natural, 100/pk

Article Number: 111-85319

Part Number: IT50L9C2

Type: IT50L

Material: PA66



1. Base Data

Part No.	IT50L9C2
Type	IT50L
Color	Natural
Features	Large flat area for imprinting or writing the required information. Hot stamping available, which is subject to minimums and lead times.
Application	Tie and identify bundles of cable in one operation.
Label E-Number Norway	13 449 04

Label E-Number Sweden 15 163 20

Recommended Labels TAG52-10TD1

2. Product Dimensions

Min. Tensile Strength 50 lbs / 225 N

Length (L) 15.350 " / 390

Width (W) .500 " / 56.00 mm

Width (W2) .190 " / 4.70 mm

Height (H) 2.200 " / 12.80 mm

Min. Ø Bundle .750 " / 10.00 mm

Max. Ø Bundle 3.940 " / 100.00 mm

4. Material and Specifications

Material Polyamide 6.6 (PA66)

Material Shortcut PA66

Flammability UL94 V2

Operating Temperature -40 °F to +185 °F (-40 °C to +85 °C) continuous

US Gov. Designation MS3368-2-9A

Logistic and Packaging

Packaging Type bag

Pkg. Qty. 100

Carton Qty. 1 Pieces

EAN code	4031026107226
-----------------	---------------

UPC	08930601997
------------	-------------

Miscellaneous

UL Listed (US and Canada) Yes

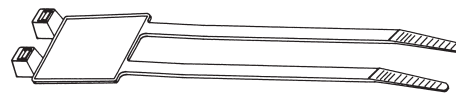
Cable Ties

Identification Ties

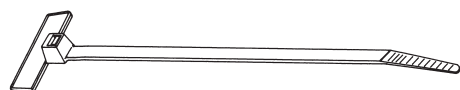
Tie and identify bundles of cable in one operation. Large flat area for imprinting or writing the required information. Hot stamping available, which is subject to minimums and lead times.



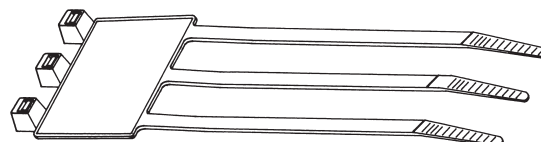
IT18R



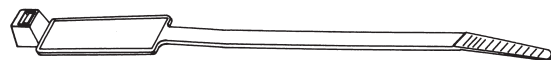
IT50RD



IT18FL



IT50RT



IT50R



IT50L

Material Data	
Material	Polyamide 6.6 (PA66)
Operating Temperature	-40 °F to +185 °F (-40 °C to +85 °C) continuous
Flammability	UL94 V2



HellermannTyton offers marking pens for use with the identification ties, see page 179.

CT US
File# E64139

Product Selection

Article No.	Part No.	Type	US Gov. Designation	Min. Tensile Strength	Length (L)	Max. Ø Bundle	Width (W)	Color	Pkg. Qty.	
				lbs. (N)	in. (mm)	in. (mm)	in. (mm)			
IT18R Marking Pad Size: .98" x .32" (25 x 8)										
111-81819	IT18R9C2	IT18R	MS3368-5-9E	18 lbs (80)	3.94" (100)	.75" (22.0)	.09" (2.3)	Natural	100	
111-81808	IT18R9L4	IT18R	MS3368-5-9E	18 lbs (80)	3.94" (100)	.75" (22.0)	.09" (2.3)	Natural	200	
111-81801	IT18R0C2	IT18R	*	18 lbs (80)	3.94" (100)	.75" (22.0)	.09" (2.3)	Black	100	
111-81803	IT18R0L4	IT18R	*	18 lbs (80)	3.94" (100)	.75" (22.0)	.09" (2.3)	Black	200	
IT18FL Marking Pad Size: .81" x .35" (20.5 x 9)										
111-81919	IT18FL9C2	IT18FL	-	18 lbs (80)	4.33" (110)	.75" (19.0)	.10" (2.5)	Natural	100	
111-81907	IT18FL9L4	IT18FL	-	18 lbs (80)	4.33" (110)	.75" (19.0)	.10" (2.5)	Natural	200	
111-81910	IT18FL0C2	IT18FL	-	18 lbs (80)	4.33" (110)	.75" (19.0)	.10" (2.5)	Black	100	
111-81903	IT18FL0L4	IT18FL	-	18 lbs (80)	4.33" (110)	.75" (19.0)	.10" (2.5)	Black	200	
IT50R Marking Pad Size: 1.10" x .51" (28 x 12.9)										
111-85019	IT50R9C2	IT50R	MS3368-1-9A	50 lbs (225)	7.99" (203)	1.75" (44.5)	.18" (4.6)	Natural	100	
111-85020	IT50R9M4	IT50R	MS3368-1-9A	50 lbs (225)	7.99" (203)	1.75" (44.5)	.18" (4.6)	Natural	1000	
111-85011	IT50R0C2	IT50R	*	50 lbs (225)	7.99" (203)	1.75" (44.5)	.18" (4.6)	Black	100	
111-85013	IT50R0M4	IT50R	*	50 lbs (225)	7.99" (203)	1.75" (44.5)	.18" (4.6)	Black	1000	
IT50RD Marking Pad Size: 1.14" x 1.04" (46 x 26.3)										
111-85219	IT50RD9K2	IT50RD	MS3368-3-9C	50 lbs (225)	8.07" (205)	1.73" (44.0)	.19" (4.7)	Natural	50	
111-85201	IT50RD0K2	IT50RD	*	50 lbs (225)	8.07" (205)	1.73" (44.0)	.19" (4.7)	Black	50	
IT50RT Marking Pad Size: 1.18" x 1.04" (46 x 26.3)										
111-85119	IT50RT9K2	IT50RT	MS3368-4-9D	50 lbs (225)	8.07" (205)	1.73" (44.0)	.19" (4.7)	Natural	50	
111-85100	IT50RT0K2	IT50RT	*	50 lbs (225)	8.07" (205)	1.73" (44.0)	.19" (4.7)	Black	50	
IT50L Marking Pad Size: .5" x 2.20" (12.8 x 56)										
111-85319	IT50L9C2	IT50L	MS3368-2-9A	50 lbs (225)	15.35" (390)	3.94" (100)	.19" (4.7)	Natural	100	
111-85306	IT50L9M4	IT50L	MS3368-2-9A	50 lbs (225)	15.35" (390)	3.94" (100)	.19" (4.7)	Natural	1000	

Installation tools - MK7, MK7P, MK7HT, MK9. Dimensions are approximate and subject to technical changes. Use **Part No.** for ordering and **Type** for specification purposes. * Military black available. Contact HellermannTyton for more information.