

## IT18FL9C2

Identification Tie, 18lb. 4.33" Max. Bun. Dia .75" Mark Pad Size .81" X .35" PA66, Natural, 100/pk

Article Number: 111-81919

Part Number: IT18FL9C2

Type: IT18FL

Material: PA66



### 1. Base Data

---

**Part No.** IT18FL9C2

**Type** IT18FL

**Color** Natural

**Features** Tie and identify bundles of cable in one operation. Large flat area for imprinting or writing the required information. Hot stamping available, which is subject to minimums and lead times.

**Application** Tie and identify bundles of cable in one operation.

<b>Recommended Labels</b>	TAG18-07TD1
---------------------------	-------------

## 2. Product Dimensions

---

<b>Min. Tensile Strength</b>	18 lbs / 80 N
<b>Length (L)</b>	4.330 " / 110
<b>Width (W)</b>	.810 " / 20.50 mm
<b>Width (W2)</b>	.100 " / 2.50 mm
<b>Height (H)</b>	.350 " / 9.00 mm
<b>Min. Ø Bundle</b>	.060 " / 1.50 mm
<b>Max. Ø Bundle</b>	.750 " / 19.00 mm

## 4. Material and Specifications

---

<b>Material</b>	Polyamide 6.6 (PA66)
<b>Material Shortcut</b>	PA66
<b>Flammability</b>	UL94 V2
<b>Operating Temperature</b>	-40 °F to +185 °F (-40 °C to +85 °C) continuous

## Logistic and Packaging

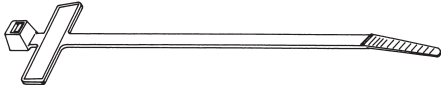
---

<b>Packaging Type</b>	bag
<b>Pkg. Qty.</b>	100
<b>Carton Qty.</b>	1 Pieces
<b>EAN code</b>	4031026107189
<b>UPC</b>	08930601893

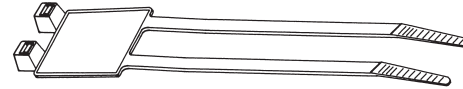
# Cable Ties

## Identification Ties

Tie and identify bundles of cable in one operation. Large flat area for imprinting or writing the required information. Hot stamping available, which is subject to minimums and lead times.



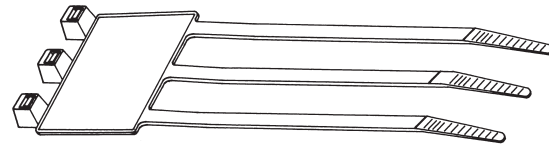
IT18R



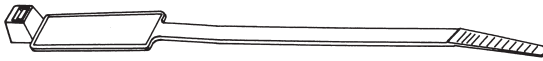
IT50RD



IT18FL



IT50RT



IT50R



IT50L

Material Data	
Material	<b>Polyamide 6.6 (PA66)</b>
Operating Temperature	<b>-40 °F to +185 °F (-40 °C to +85 °C) continuous</b>
Flammability	<b>UL94 V2</b>



HellermannTyton offers marking pens for use with the identification ties, see page 179.

**CT** US  
File# E64139

### Product Selection

Article No.	Part No.	Type	US Gov. Designation	Min. Tensile Strength	Length (L)	Max. Ø Bundle	Width (W)	Color	Pkg. Qty.	
				lbs. (N)	in. (mm)	in. (mm)	in. (mm)			
<b>IT18R</b> Marking Pad Size: .98" x .32" (25 x 8)										
111-81819	<b>IT18R9C2</b>	IT18R	MS3368-5-9E	18 lbs (80)	3.94" (100)	.75" (22.0)	.09" (2.3)	Natural	100	
111-81808	<b>IT18R9L4</b>	IT18R	MS3368-5-9E	18 lbs (80)	3.94" (100)	.75" (22.0)	.09" (2.3)	Natural	200	
111-81801	<b>IT18R0C2</b>	IT18R	*	18 lbs (80)	3.94" (100)	.75" (22.0)	.09" (2.3)	Black	100	
111-81803	<b>IT18R0L4</b>	IT18R	*	18 lbs (80)	3.94" (100)	.75" (22.0)	.09" (2.3)	Black	200	
<b>IT18FL</b> Marking Pad Size: .81" x .35" (20.5 x 9)										
111-81919	<b>IT18FL9C2</b>	IT18FL	-	18 lbs (80)	4.33" (110)	.75" (19.0)	.10" (2.5)	Natural	100	
111-81907	<b>IT18FL9L4</b>	IT18FL	-	18 lbs (80)	4.33" (110)	.75" (19.0)	.10" (2.5)	Natural	200	
111-81910	<b>IT18FL0C2</b>	IT18FL	-	18 lbs (80)	4.33" (110)	.75" (19.0)	.10" (2.5)	Black	100	
111-81903	<b>IT18FL0L4</b>	IT18FL	-	18 lbs (80)	4.33" (110)	.75" (19.0)	.10" (2.5)	Black	200	
<b>IT50R</b> Marking Pad Size: 1.10" x .51" (28 x 12.9)										
111-85019	<b>IT50R9C2</b>	IT50R	MS3368-1-9A	50 lbs (225)	7.99" (203)	1.75" (44.5)	.18" (4.6)	Natural	100	
111-85020	<b>IT50R9M4</b>	IT50R	MS3368-1-9A	50 lbs (225)	7.99" (203)	1.75" (44.5)	.18" (4.6)	Natural	1000	
111-85011	<b>IT50R0C2</b>	IT50R	*	50 lbs (225)	7.99" (203)	1.75" (44.5)	.18" (4.6)	Black	100	
111-85013	<b>IT50R0M4</b>	IT50R	*	50 lbs (225)	7.99" (203)	1.75" (44.5)	.18" (4.6)	Black	1000	
<b>IT50RD</b> Marking Pad Size: 1.14" x 1.04" (46 x 26.3)										
111-85219	<b>IT50RD9K2</b>	IT50RD	MS3368-3-9C	50 lbs (225)	8.07" (205)	1.73" (44.0)	.19" (4.7)	Natural	50	
111-85201	<b>IT50RD0K2</b>	IT50RD	*	50 lbs (225)	8.07" (205)	1.73" (44.0)	.19" (4.7)	Black	50	
<b>IT50RT</b> Marking Pad Size: 1.18" x 1.04" (46 x 26.3)										
111-85119	<b>IT50RT9K2</b>	IT50RT	MS3368-4-9D	50 lbs (225)	8.07" (205)	1.73" (44.0)	.19" (4.7)	Natural	50	
111-85100	<b>IT50RT0K2</b>	IT50RT	*	50 lbs (225)	8.07" (205)	1.73" (44.0)	.19" (4.7)	Black	50	
<b>IT50L</b> Marking Pad Size: .5" x 2.20" (12.8 x 56)										
111-85319	<b>IT50L9C2</b>	IT50L	MS3368-2-9A	50 lbs (225)	15.35" (390)	3.94" (100)	.19" (4.7)	Natural	100	
111-85306	<b>IT50L9M4</b>	IT50L	MS3368-2-9A	50 lbs (225)	15.35" (390)	3.94" (100)	.19" (4.7)	Natural	1000	

Installation tools - MK7, MK7P, MK7HT, MK9. Dimensions are approximate and subject to technical changes. Use **Part No.** for ordering and **Type** for specification purposes. \* Military black available. Contact HellermannTyton for more information.