

## HDM501HIHSUVH4

Heavy Duty Mount, Mounting .5" Max Torq 40 lb Max Dia for Washer .90" PA66HSUV,  
Black, 500/pkg

Article Number: 151-07500

Part Number: HDM501HIHSUVH4

Type: HDM501

Material: PA66HSUV



### 1. Base Data

---

**Part No.** HDM501HIHSUVH4

**Type** HDM501

**Color** Black (BK)

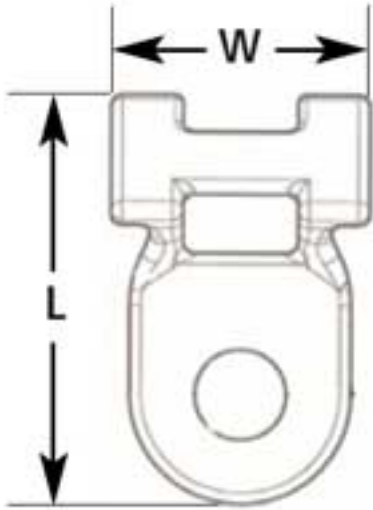
**Features** The heavy duty mount and cable tie combination makes it easy to service bundles in the field. Simply remove the cable tie, leave the mount in place, and replace the cable tie. The heavy duty mounts are designed for use with HellermannTyton's heavy duty T

## Application

The heavy duty mount, when used with a cable tie, eliminates the need to carry multiple sizes of fixed bundle diameter clamps, which reduces inventory and purchasing costs while simplifying the assembly process.

## 2. Product Dimensions

---



|                             |                 |
|-----------------------------|-----------------|
| <b>Length (L)</b>           | 1.8 " / 46 mm   |
| <b>Width (W)</b>            | .96 " / 24.0 mm |
| <b>Max. Cable Tie Width</b> | 0.5 " / 12.7 mm |
| <b>Mounting Hole Ø</b>      | .5 " / 12.7     |

## 4. Material and Specifications

---

|                              |  |
|------------------------------|--|
| <b>Material</b>              | Polyamide 6.6 heat-/UV-stabilized (PA66HSUV)     |
| <b>Material Shortcut</b>     | PA66HSUV   |
| <b>Flammability</b>          | UL94 V2  |
| <b>Max. Torque</b>           | 553 kgf-cm / 40 lbf-ft                           |
| <b>Operating Temperature</b> | -40 °F to +221 °F (-40 °C to +105 °C) continuous |

## Logistic and Packaging

---

**Packaging Type**                      bag

**Pkg. Qty.**                                500

**Carton Qty.**                            500

**EAN code**                               4031026266374

**UPC**                                        08930622213

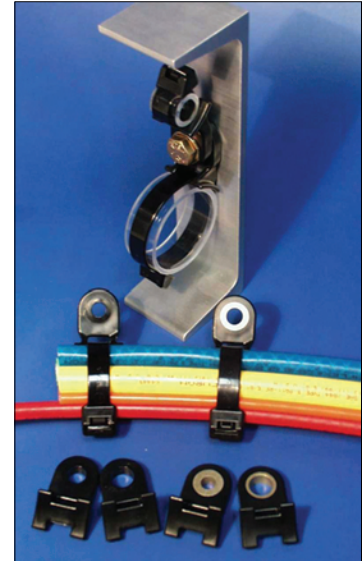
# Mounts

## Heavy Duty Mounts

The heavy duty mount, when used with a cable tie, eliminates the need to carry multiple sizes of fixed bundle diameter clamps, which reduces inventory and purchasing costs while simplifying the assembly process.

The heavy duty mount and cable tie combination makes it easy to service bundles in the field. Simply remove the cable tie, leave the mount in place, and replace the cable tie.

The heavy duty mounts are designed for use with HellermannTyton's heavy duty T250, T255, and wide strap cable ties to harness wires and hoses; however, they accept all standard cable ties up to .5" wide.



U.S. Patent Number 5,820,083

| Material Data         |   |
|-----------------------|---|
| Material              | <b>Polyamide 6.6 impact modified, Heat Stabilized, UV Resistant (PA66HIRHS)</b> |
| Operating Temperature | <b>-40 °F to +230 °F (-40 °C to +110 °C) continuous</b>                         |
| Flammability          | <b>UL94 HB</b>  |

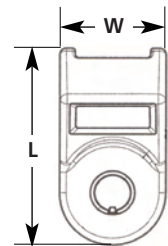


## Standard Torque Mounts

These mounts contain a small tab inside the mounting hole to temporarily engage the threads, which allows assemblers to pre-install the mount on a stud before securing with a washer and a nut.

| Product Selection |                     | Type   | Mounting    | Max Torque    | Max Ø for Washer/Socket | Length (L)    | Width (W)   | Color | Pkg. Qty. |
|-------------------|---------------------|--------|-------------|---------------|-------------------------|---------------|-------------|-------|-----------|
| Article No.       | Part No.            |        | in. (mm)    | lb. - in      | in. (mm)                | in. (mm)      | in. (mm)    |       |           |
| 151-00134         | <b>HDM190HIRC2</b>  | HDM19  | .1875 (4.8) | 115 lb. - in. | .73" (18.5)             | 1.43" (36.32) | .76" (19.3) | Black | 100       |
| 151-00436         | <b>HDM190HIRH4</b>  | HDM19  | .1875 (4.8) | 115 lb. - in. | .73" (18.5)             | 1.43" (36.32) | .76" (19.3) | Black | 500       |
| 151-00437         | <b>HDM250HIRC2</b>  | HDM25  | .25" (6.4)  | 115 lb. - in. | .73" (18.5)             | 1.43" (36.32) | .76" (19.3) | Black | 100       |
| 151-00438         | <b>HDM250HIRH4</b>  | HDM25  | .25" (6.4)  | 115 lb. - in. | .73" (18.5)             | 1.43" (36.32) | .76" (19.3) | Black | 500       |
| 151-00439         | <b>HDM3120HIRC2</b> | HDM312 | .3125" (8)  | 115 lb. - in. | .73" (18.5)             | 1.43" (36.32) | .76" (19.3) | Black | 100       |
| 151-00440         | <b>HDM3120HIRH4</b> | HDM312 | .3125" (8)  | 115 lb. - in. | .73" (18.5)             | 1.43" (36.32) | .76" (19.3) | Black | 500       |

Dimensions are approximate and subject to technical changes. Use **Part No.** for ordering and **Type** for specification purposes.

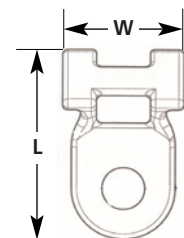


## Medium Torque Mounts

The arched "H" profile of the saddle surface allows for a broad surface contact with the bundle, minimizing pinching and crushing of the bundles, and adjusts to a wide variety of bundle diameters.

| Product Selection |                       | Type   | Mounting    | Max Torque   | Max Ø for Washer/Socket | Length (L) | Width (W) | Color | Pkg. Qty. |
|-------------------|-----------------------|--------|-------------|--------------|-------------------------|------------|-----------|-------|-----------|
| Article No.       | Part No.              |        | in. (mm)    | lb. - ft.    | in. (mm)                | in. (mm)   | in. (mm)  |       |           |
| 151-00441         | <b>HDM321HIHSUVC2</b> | HDM321 | .3125" (8)  | 40 lb. - ft. | .90" (23)               | 1.8" (46)  | .96" (24) | Black | 100       |
| 151-07100         | <b>HDM321HIHSUVH4</b> | HDM321 | .3125" (8)  | 40 lb. - ft. | .90" (23)               | 1.8" (46)  | .96" (24) | Black | 500       |
| 151-00442         | <b>HDM401HIHSUVC2</b> | HDM401 | .375" (9.5) | 40 lb. - ft. | .90" (23)               | 1.8" (46)  | .96" (24) | Black | 100       |
| 151-07300         | <b>HDM401HIHSUVH4</b> | HDM401 | .375" (9.5) | 40 lb. - ft. | .90" (23)               | 1.8" (46)  | .96" (24) | Black | 500       |
| 151-00443         | <b>HDM501HIHSUVC2</b> | HDM501 | .5" (12.7)  | 40 lb. - ft. | .90" (23)               | 1.8" (46)  | .96" (24) | Black | 100       |
| 151-07500         | <b>HDM501HIHSUVH4</b> | HDM501 | .5" (12.7)  | 40 lb. - ft. | .90" (23)               | 1.8" (46)  | .96" (24) | Black | 500       |

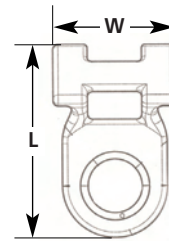
Dimensions are approximate and subject to technical changes. Use **Part No.** for ordering and **Type** for specification purposes.



## Heavy Duty Mounts (continued)

### High Torque Mounts

The high torque mount is designed for use with power-assisted impact wrenches and is molded with a metal bushing to withstand the forces required to tighten grade 8 bolts. The arched "H" profile of the saddle surface allows for a broad surface contact with the bundle, minimizing pinching and crushing of bundles, and it adjusts to a wide variety of bundle diameters.

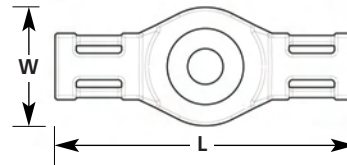


| Product Selection      |  |                  |                            |                                |                          |                          |                        |                |            |
|------------------------|--|------------------|----------------------------|--------------------------------|--------------------------|--------------------------|------------------------|----------------|------------|
| Article No.            | Part No.   | Type             | Mounting                   | Max Torque                     | Max Ø for Washer/Socket  | Length (L)               | Width (W)              | Color          | Pkg. Qty.  |
|                        |  |                  | in. (mm)                   | lb. - ft.                      | in. (mm)                 | in. (mm)                 | in. (mm)               |                |            |
| 151-00444<br>151-07000 | <b>HDM320BHIHSUVC2</b><br><b>HDM320BHIHSUVH4</b> | HDM320<br>HDM320 | .3125" (8)<br>.3125" (8)   | 114 lb. - ft.<br>114 lb. - ft. | .9" (23)<br>.9" (23)     | 1.85" (47)<br>1.85" (47) | .99" (25)<br>.99" (25) | Black<br>Black | 100<br>500 |
| 151-00445<br>151-07200 | <b>HDM400BHISHUVC2</b><br><b>HDM400BHIHSUVH4</b> | HDM400<br>HDM400 | .375" (9.5)<br>.375" (9.5) | 114 lb. - ft.<br>114 lb. - ft. | 1.26" (32)<br>1.26" (32) | 1.85" (47)<br>1.85" (47) | .99" (25)<br>.99" (25) | Black<br>Black | 100<br>500 |
| 151-00446<br>151-07400 | <b>HDM500BHIHSUVC2</b><br><b>HDM500BHIHSUVH4</b> | HDM500<br>HDM500 | .5" (12.7)<br>.5" (12.7)   | 114 lb. - ft.<br>114 lb. - ft. | 1.26" (32)<br>1.26" (32) | 1.85" (47)<br>1.85" (47) | .99" (25)<br>.99" (25) | Black<br>Black | 100<br>500 |

Dimensions are approximate and subject to technical changes. Use **Part No.** for ordering and **Type** for specification purposes.

### High Torque Double Mount

This mount is designed for use with power-assisted impact wrenches and is molded with a metal bushing to withstand the forces required to tighten grade 8 bolts. The high torque double mount secures the bundle directly over the mounting fastener. The cable ties are held in place during assembly with friction tabs inside the cable tie slots. The arched "H" profile of the saddle surface allows for a broad surface contact with the bundle, minimizing pinching and crushing of the bundles, and accommodates a wide variety of bundle diameters.



| Product Selection |                  |        |             |               |                         |            |              |       |           |
|-------------------|------------------|--------|-------------|---------------|-------------------------|------------|--------------|-------|-----------|
| Article No.       | Part No.         | Type   | Mounting    | Max Torque    | Max Ø for Washer/Socket | Length (L) | Width (W)    | Color | Pkg. Qty. |
|                   |                  |        | in. (mm)    | lb. - ft.     | in. (mm)                | in. (mm)   | in. (mm)     |       |           |
| 151-00456         | <b>151-00456</b> | HDM375 | .375" (9.5) | 114 lb. - ft. | 1.27" (32.5)            | 3.43" (87) | 1.36" (34.5) | Black | 100       |

Dimensions are approximate and subject to technical changes. Use **Part No.** for ordering and **Type** for specification purposes.