

GT.50X60P2

6" Grip Tie - .5" wide - Black

Article Number: 854-44339

Part Number: GT.50X60P2

Type: GT.50X6

Material: PA66



1. Base Data

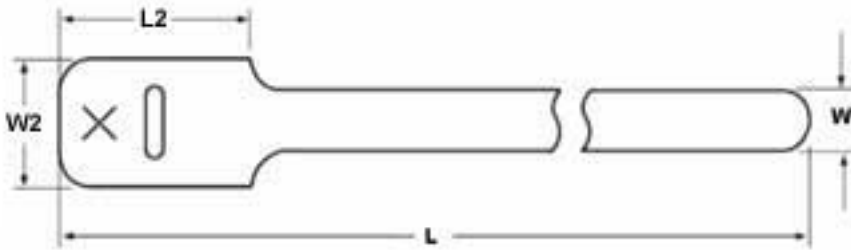
Part No. GT.50X60P2

Type GT.50X6

Color Black (BK)

Features The Grip Tie is a low profile, one piece fastening device. Constructed of polyethylene hook and nylon loop, laminated back to back, the Grip Tie features quick release for repetitive access to cable and wire. It can be opened and closed numerous times wit

2. Product Dimensions



Min. Tensile Strength 40 lbs / 177.93

Length (L) 6 " / 152.4 mm

Length (L2) 1.5 " / 38.1 mm

Width (W) .5 " / 12.7

Width (W2) 1 " / 25.4

Max. Ø Bundle 1 " / 25.4 mm

4. Material and Specifications

Material Polyamide (PA)

Material Shortcut PA66

Logistic and Packaging

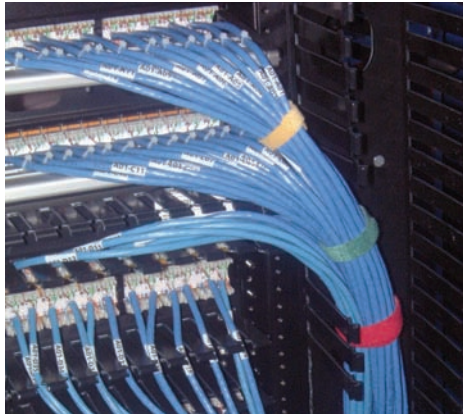
Packaging Type bag

Pkg. Qty. 10

Carton Qty. 1000

Minimum Order Quantity 10

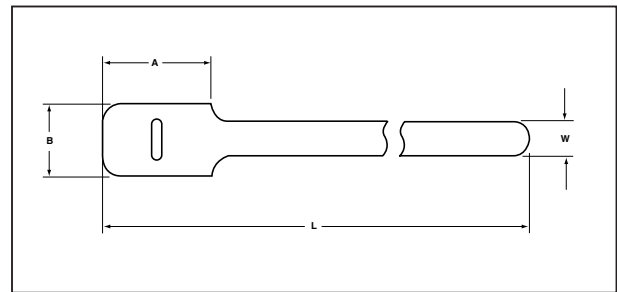
UPC 08930616377



Grip Tie Straps

The Grip Tie is a low profile, one piece fastening device. Constructed of polyethylene hook and nylon loop, laminated back to back, the Grip Tie features quick release for repetitive access to cable and wire. It can be opened and closed numerous times without failure. The Grip Tie is reusable, adjustable, releasable and easy to install. Its design provides ease of installation in tight areas such as telecommunications closets and will not get caught on other cables. The tie also will not cause damage to Category 5e and Category 6 cable or fiber optic cable since it cannot be over-cinched.

Available in rolls and straps in 6", 8", 11" and 15" sizes. The Grip Ties are available in a variety of colors and are versatile enough for applications ranging from network installations to bundling power cords. Grip ties are customizable with your company name (minimum quantities apply).



Grip Tie Straps

Product Selection

Part Number	Color	Bundle Diameter	Tensile Strength	Length (L)	Width (W)	Head Length (A)	Head Width (B)	Pkg. Qty.
6" Straps								
GT.375X60C2	Black	1"	40 lbs.	6"	.375"	1.5"	.75"	100
GT.50X60P2	Black	1"	40 lbs.	6"	0.5"	1.5"	1"	10
GT.50X60C2	Black	1"	40 lbs.	6"	0.5"	1.5"	1"	100
GT.50X62P2	Red	1"	40 lbs.	6"	0.5"	1.5"	1"	10
GT.50X62C2	Red	1"	40 lbs.	6"	0.5"	1.5"	1"	100
GT.50X63P2	Orange	1"	40 lbs.	6"	0.5"	1.5"	1"	10
GT.50X63C2	Orange	1"	40 lbs.	6"	0.5"	1.5"	1"	100
GT.50X64P2	Yellow	1"	40 lbs.	6"	0.5"	1.5"	1"	10
GT.50X64C2	Yellow	1"	40 lbs.	6"	0.5"	1.5"	1"	100
GT.50X65P2	Green	1"	40 lbs.	6"	0.5"	1.5"	1"	10
GT.50X65C2	Green	1"	40 lbs.	6"	0.5"	1.5"	1"	100
GT.50X66P2	Blue	1"	40 lbs.	6"	0.5"	1.5"	1"	10
GT.50X66C2	Blue	1"	40 lbs.	6"	0.5"	1.5"	1"	100

