

SLA4X2W4

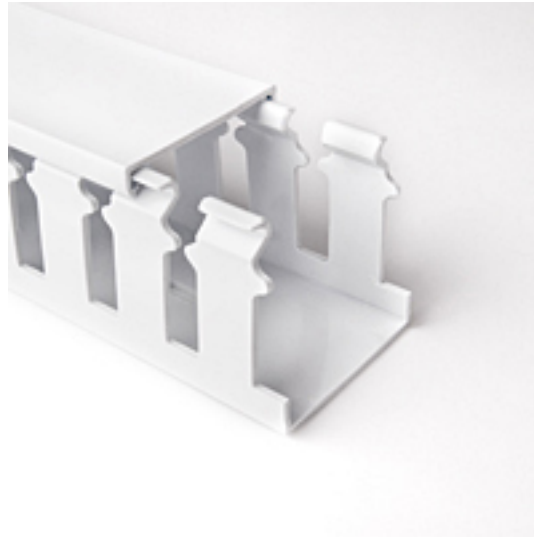
Slotted Wall Duct - 4" X 2" Adhesive, PVC, White, 120' / carton

Article Number: 181-42014

Part Number: SLA4X2W4

Type: SLA4X2

Material: PVC



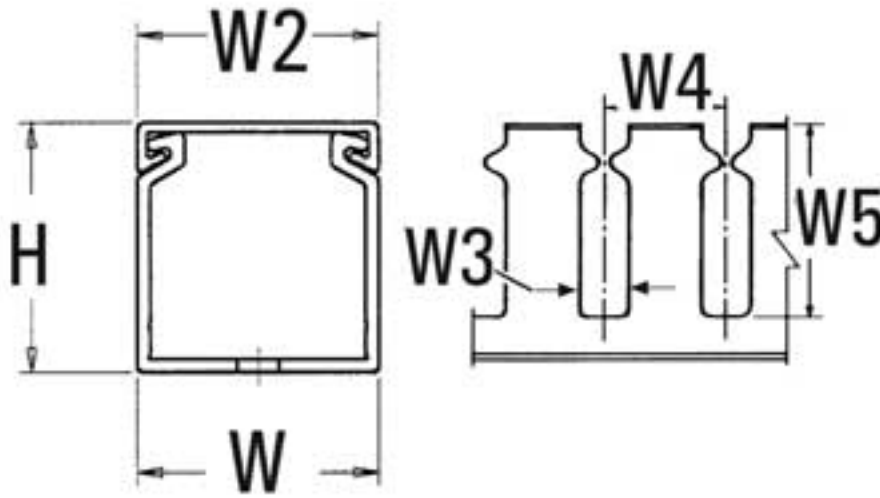
1. Base Data

Part No.	SLA4X2W4
-----------------	----------

Type	SLA4X2
-------------	--------

Color	White
--------------	-------

2. Product Dimensions



Length (L)	6 ft / 1.83 m
Width (W)	4.03 " / 102.40 mm
Width (W2)	4.00 " / 101.6 mm
Width (W3)	10.2 mm
Width (W4)	1.00 " / 25.4 mm
Width (W5)	1.62 " / 41.1 mm
Width (W6)	1.50 " / 38.1 mm
Height (H)	2.06 " / 52.3 mm
Mounting Hole Centers	4.00 " / 101.60 mm

4. Material and Specifications

Material	Polyvinylchloride (PVC)
Material Shortcut	PVC
Certification	UL
CSA Certified	Yes
Flammability	self-extinguishing
Operating Temperature	+122 °F (+50 °C)

Logistic and Packaging

Packaging Type	carton
Pkg. Qty.	120 ft / 36.6 m
Carton Qty.	120 ft
UPC	08930605052

Miscellaneous

UL Recognized (US and Canada)	Yes
Width (W3)	.40 "

Pro-Duct Wiring Duct

HellermannTyton's Pro-Duct wiring duct efficiently routes and protects wire and cable. Manufactured from high impact, rigid PVC, Pro-Duct includes solid, slotted and high density slotted styles. Available in over 28 sizes, Pro-Duct comes in standard colors of white, gray and black in 6 foot lengths. Blue wiring duct is also available in a variety of standard sizes. Other colors are available. Contact HellermannTyton for minimum volume requirements.

Pro-Duct Features

All styles of Pro-Duct wiring duct (solid, slotted and high density slotted) are designed with many installer preferred features:

- Smooth edges protect installer and wires from abrasion.
- Cover is flush with the side of the duct for increased wire capacity. It also allows for tight, side-by-side placement.
- No cover slippage. The covers are provided with a non-slip plastic lining. This ensures that the covers remain in place during vibration, yet they easily snap on and off, offering ready access to the wire run.
- Mounting holes are designed for installation versatility. Elongated mounting holes allow for changes in panel designs and installation flexibility.
- Mounting holes are standard. Contact HellermannTyton for duct without mounting holes.
- Enhanced wire capacity helps maximize space within panels.
- Interchangeable covers between solid, slotted, and high density slotted styles reduce inventory and increase versatility.
- Professional appearance increases panel's overall neatness.

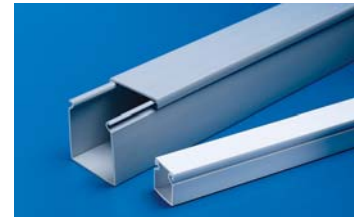
Pro-Duct is U.L. Recognized, CSA Certified, and carries a U.L. flame rating of 94V0.



Solid Wall Duct

Solid wall duct is designed for straight wire runs where break-outs are not required.

- Smooth edges
- Non-slip cover
- Professional appearance



Slotted Wall Duct

Slotted wall duct features break-away fingers which provide additional access for wire leads.

Slotted wall duct is manufactured with two score lines.

The first score line is at the base of the finger, allowing the finger to be bent and broken away when a greater opening is required. The second score line is lower allowing a section of the sidewall to be easily removed by cutting the sidewall down to the lower score line. Use HellermannTyton's TDNT notching tool and snap out the desired section. Both score lines provide smooth edges to ensure worker safety.

Strong fingers prevent unwanted breaking.

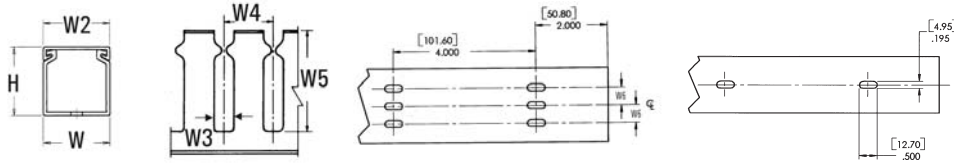
The fingers are easily deflected outward, allowing ready positioning of the wires within the slotted wall duct.

Restricted opening design in the finger of the duct helps keep wires in place.

Restriction also prevents unintended removal of wires and permits any individual wire to be traced without disconnection.



Slotted Wall Duct



Product Selection												
Article No.	Part No.	Type	Width (W)	Height (H)	Width (W2)	Width (W3)	Width (W4)	Width (W5)	Width (W6)	Description	Color	Pkg. Qty.
			in. (mm)	in. (mm)	in. (mm)	in. (mm)	in. (mm)	in. (mm)	in. (mm)			ft. (6 ft. lengths)
3" x 5" (76.2 x 127.0) Nominal Duct Size												
181-00560	SL3X5W4	SL3X5	3.00" (76.20)	5.00" (127.00)	3.00" (76.20)	.40" (10.16)	1.00" (25.40)	4.60" (116.8)	Three rows of holes 1.00" (25.4)	Non-Adhesive	White	120 ft
181-00156	SLA3X5G4	SLA3X5								Adhesive	White	120 ft
181-35005	SL3X5G4	SL3X5								Non-Adhesive	Gray	120 ft
181-00155	SLA3X5G4	SLA3X5								Adhesive	Gray	120 ft
181-35002	SL3X5BK4	SL3X5								Non-Adhesive	Black	120 ft
181-00157	SLA3X5BK4	SLA3X5								Adhesive	Black	120 ft
4" x 2" (101.6 x 50.8) Nominal Duct Size												
181-42010	SL4X2W4	SL4X2	4.03" (102.36)	2.06" (52.3)	4.00" (101.60)	.40" (10.16)	1.00" (25.40)	1.62" (41.1)	Three rows of holes 1.50" (38.1)	Non-Adhesive	White	120 ft
181-42014	SLA4X2W4	SLA4X2								Adhesive	White	120 ft
181-42008	SL4X2G4	SL4X2								Non-Adhesive	Gray	120 ft
181-00592	SLA4X2G4	SLA4X2								Adhesive	Gray	120 ft
181-42005	SL4X2BK4	SL4X2								Non-Adhesive	Black	120 ft
181-00591	SLA4X2BK4	SLA4X2								Adhesive	Black	120 ft
4" x 3" (101.6 x 76.2) Nominal Duct Size												
181-43006	SL4X3W4	SL4X3	4.03" (102.36)	3.00" (76.20)	4.00" (101.60)	.40" (10.16)	1.00" (25.40)	2.60" (66.0)	Three rows of holes 1.50" (38.1)	Non-Adhesive	White	120 ft
181-00594	SLA4X3W4	SLA4X3								Adhesive	White	120 ft
181-43004	SL4X3G4	SL4X3								Non-Adhesive	Gray	120 ft
181-43008	SLA4X3G4	SLA4X3								Adhesive	Gray	120 ft
181-00562	SL4X3BK4	SL4X3								Non-Adhesive	Black	120 ft
181-00593	SLA4X3BK4	SLA4X3								Adhesive	Black	120 ft
4" x 4" (101.6 x 101.6) Nominal Duct Size												
181-44031	SL4X4W4	SL4X4	4.00" (101.60)	4.00" (101.60)	4.00" (101.60)	.40" (10.16)	1.00" (25.40)	3.60" (91.4)	Three rows of holes 1.50" (38.1)	Non-Adhesive	White	120 ft
181-44035	SLA4X4W4	SLA4X4								Adhesive	White	120 ft
181-44027	SL4X4G4	SL4X4								Non-Adhesive	Gray	120 ft
181-44033	SLA4X4G4	SLA4X4								Adhesive	Gray	120 ft
181-44020	SL4X4BK4	SL4X4								Non-Adhesive	Black	120 ft
181-00595	SLA4X4BK4	SLA4X4								Adhesive	Black	120 ft
4" x 5" (101.6 x 127) Nominal Duct Size												
181-45011	SL4X5W4	SL4X5	4.00" (101.60)	5.06" (128.52)	4.00" (101.60)	.40" (10.16)	1.00" (25.40)	4.60" (116.8)	Three rows of holes 1.50" (38.1)	Non-Adhesive	White	60 ft
181-45013	SLA4X5W4	SLA4X5								Adhesive	White	60 ft
181-45010	SL4X5G4	SL4X5								Non-Adhesive	Gray	60 ft
181-00596	SLA4X5G4	SLA4X5								Adhesive	Gray	60 ft
181-45002	SL4X5BK4	SL4X5								Non-Adhesive	Black	60 ft
181-45012	SLA4X5BK4	SLA4X5								Adhesive	Black	60 ft

Dimensions are approximate and subject to technical changes. Use **Part No.** for ordering and **Type** for specification purposes.

Covers are listed on page 117.