

## SLA1.5X1.5G4

Slotted Wall Duct - 1.5" X 1.5" Adhesive, PVC, Gray, 120' / carton

Article Number: 181-15513

Part Number: SLA1.5X1.5G4

Type: SLA1.5X1.5

Material: PVC



### 1. Base Data

---

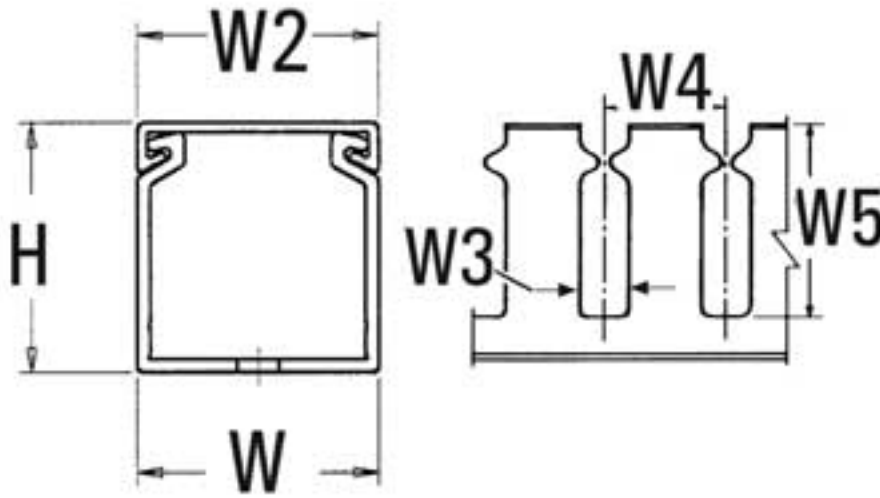
**Part No.** SLA1.5X1.5G4

**Type** SLA1.5X1.5

**Color** Gray

### 2. Product Dimensions

---



<b>Length (L)</b>	6 ft / 1.83 m
<b>Width (W)</b>	1.52 " / 38.6 mm
<b>Width (W2)</b>	1.50 " / 38.1 mm
<b>Width (W3)</b>	10.2 mm
<b>Width (W4)</b>	1.00 " / 25.40 mm
<b>Width (W5)</b>	1.19 " / 30.2 mm
<b>Height (H)</b>	1.56 " / 39.6 mm
<b>Mounting Hole Centers</b>	4.00 " / 101.6 mm

#### 4. Material and Specifications

<b>Material</b>	Polyvinylchloride (PVC)
<b>Material Shortcut</b>	PVC
<b>Certification</b>	UL
<b>CSA Certified</b>	Yes
<b>Flammability</b>	self-extinguishing
<b>Operating Temperature</b>	+122 °F (+50 °C)

## Logistic and Packaging

---

Packaging Type	carton
Pkg. Qty.	120 ft / 36.6 m
Carton Qty.	120 ft
UPC	08930629318

## Miscellaneous

---

UL Recognized (US and Canada)	Yes
Width (W3)	.40 "

## Pro-Duct Wiring Duct

HellermannTyton's Pro-Duct wiring duct efficiently routes and protects wire and cable. Manufactured from high impact, rigid PVC, Pro-Duct includes solid, slotted and high density slotted styles. Available in over 28 sizes, Pro-Duct comes in standard colors of white, gray and black in 6 foot lengths. Blue wiring duct is also available in a variety of standard sizes. Other colors are available. Contact HellermannTyton for minimum volume requirements.

### Pro-Duct Features

All styles of Pro-Duct wiring duct (solid, slotted and high density slotted) are designed with many installer preferred features:

- Smooth edges protect installer and wires from abrasion.
- Cover is flush with the side of the duct for increased wire capacity. It also allows for tight, side-by-side placement.
- No cover slippage. The covers are provided with a non-slip plastic lining. This ensures that the covers remain in place during vibration, yet they easily snap on and off, offering ready access to the wire run.
- Mounting holes are designed for installation versatility. Elongated mounting holes allow for changes in panel designs and installation flexibility.
- Mounting holes are standard. Contact HellermannTyton for duct without mounting holes.
- Enhanced wire capacity helps maximize space within panels.
- Interchangeable covers between solid, slotted, and high density slotted styles reduce inventory and increase versatility.
- Professional appearance increases panel's overall neatness.

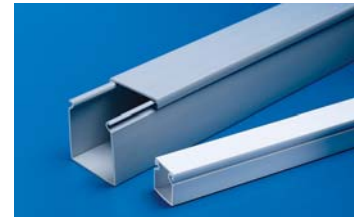
*Pro-Duct is U.L. Recognized, CSA Certified, and carries a U.L. flame rating of 94V0.*



### Solid Wall Duct

Solid wall duct is designed for straight wire runs where break-outs are not required.

- Smooth edges
- Non-slip cover
- Professional appearance



### Slotted Wall Duct

Slotted wall duct features break-away fingers which provide additional access for wire leads.

**Slotted wall duct is manufactured with two score lines.**

The first score line is at the base of the finger, allowing the finger to be bent and broken away when a greater opening is required. The second score line is lower allowing a section of the sidewall to be easily removed by cutting the sidewall down to the lower score line. Use HellermannTyton's TDNT notching tool and snap out the desired section. Both score lines provide smooth edges to ensure worker safety.

**Strong fingers prevent unwanted breaking.**

The fingers are easily deflected outward, allowing ready positioning of the wires within the slotted wall duct.

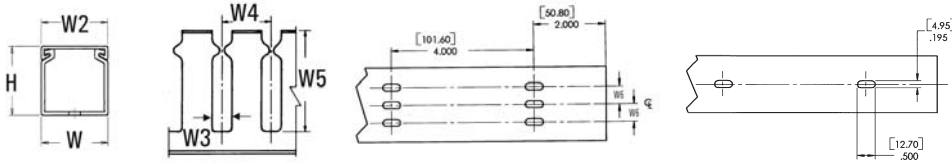
**Restricted opening design in the finger of the duct helps keep wires in place.**

Restriction also prevents unintended removal of wires and permits any individual wire to be traced without disconnection.



# Wiring Duct

## Slotted Wall Duct



File # E64139 File # 49249

Product Selection			Width (W)	Height (H)	Width (W2)	Width (W3)	Width (W4)	Width (W5)	Width (W6)	Description	Color	Pkg. Qty.
Article No.	Part No.	Type	in. (mm)	in. (mm)	in. (mm)	in. (mm)	in. (mm)	in. (mm)	in. (mm)			ft. (6 ft. lengths)
<b>1.5" x 1.5" (38.1 x 38.1) Nominal Duct Size</b>												
181-15511	SL1.5X1.5W4	SL1.5X1.5	1.52" (38.61)	1.56" (34.6)	1.50" (38.10)	.40" (10.16)	1.00" (25.40)	1.19" (30.2)	One row of holes on $\Phi$	Non-Adhesive	White	120 ft
181-15515	SLA1.5X1.5W4	SLA1.5X1.5								Adhesive	White	120 ft
181-15509	SL1.5X1.5G4	SL1.5X1.5								Non-Adhesive	Gray	120 ft
181-15513	SLA1.5X1.5G4	SLA1.5X1.5								Adhesive	Gray	120 ft
181-15505	SL1.5X1.5BK4	SL1.5X1.5								Non-Adhesive	Black	120 ft
181-00027	SLA1.5X1.5BK4	SLA1.5X1.5								Adhesive	Black	120 ft
<b>1.5" x 2" (38.1 x 50.8) Nominal Duct Size</b>												
181-15209	SL1.5X2W4	SL1.5X2	1.53" (38.86)	2.06" (52.32)	1.50" (38.10)	.40" (10.16)	1.00" (25.40)	1.62" (41.1)	One row of holes on $\Phi$	Non-Adhesive	White	120 ft
181-15213	SLA1.5X2W4	SLA1.5X2								Adhesive	White	120 ft
181-15207	SL1.5X2G4	SL1.5X2								Non-Adhesive	Gray	120 ft
181-15211	SLA1.5X2G4	SLA1.5X2								Adhesive	Gray	120 ft
181-15203	SL1.5X2BK4	SL1.5X2								Non-Adhesive	Black	120 ft
181-00573	SLA1.5X2BK4	SLA1.5X2								Adhesive	Black	120 ft
<b>1.5" x 3" (38.1 x 76.2) Nominal Duct Size</b>												
181-15306	SL1.5X3W4	SL1.5X3	1.52" (38.61)	3.06" (77.72)	1.50" (38.10)	.40" (10.16)	1.00" (25.40)	2.60" (66.0)	One row of holes on $\Phi$	Non-Adhesive	White	120 ft
181-15308	SLA1.5X3W4	SLA1.5X3								Adhesive	White	120 ft
181-15304	SL1.5X3G4	SL1.5X3								Non-Adhesive	Gray	120 ft
181-15307	SLA1.5X3G4	SLA1.5X3								Adhesive	Gray	120 ft
181-00550	SL1.5X3BK4	SL1.5X3								Non-Adhesive	Black	120 ft
181-00575	SLA1.5X3BK4	SLA1.5X3								Adhesive	Black	120 ft
<b>1.5" x 4" (38.1 x 101.6) Nominal Duct Size</b>												
181-15406	SL1.5X4W4	SL1.5X4	1.50" (38.10)	4.06" (103.12)	1.50" (38.10)	.40" (10.16)	1.00" (25.40)	3.60" (91.40)	One row of holes on $\Phi$	Non-Adhesive	White	120 ft
181-00578	SLA1.5X4W4	SLA1.5X4								Adhesive	White	120 ft
181-15404	SL1.5X4G4	SL1.5X4								Non-Adhesive	Gray	120 ft
181-00577	SLA1.5X4G4	SLA1.5X4								Adhesive	Gray	120 ft
181-15400	SL1.5X4BK4	SL1.5X4								Non-Adhesive	Black	120 ft
181-00576	SLA1.5X4BK4	SLA1.5X4								Adhesive	Black	120 ft
<b>2" x 1" (50.8 x 25.4) Nominal Duct Size</b>												
181-21007	SL2X1W4	SL2X1	2.01" (51.05)	1.05" (26.7)	2.00" (50.80)	.40" (10.16)	1.00" (25.40)	.75" (19.1)	Three rows of holes .50" (12.7)	Non-Adhesive	White	120 ft
181-00580	SLA2X1W4	SLA2X1								Adhesive	White	120 ft
181-21005	SL2X1G4	SL2X1								Non-Adhesive	Gray	120 ft
181-21009	SLA2X1G4	SLA2X1								Adhesive	Gray	120 ft
181-00554	SL2X1BK4	SL2X1								Non-Adhesive	Black	120 ft
181-00579	SLA2X1BK4	SLA2X1								Adhesive	Black	120 ft
<b>2" x 2" (50.8 x 50.8) Nominal Duct Size</b>												
181-22028	SL2X2W4	SL2x2	2.03" (51.56)	2.00" (50.80)	2.00" (50.80)	.40" (10.16)	1.00" (25.40)	1.62" (41.1)	Three rows of holes .50" (12.7)	Non-Adhesive	White	120 ft
181-22034	SLA2X2W4	SLA2X2								Adhesive	White	120 ft
181-22024	SL2X2G4	SL2x2								Non-Adhesive	Gray	120 ft
181-22032	SLA2X2G4	SLA2X2								Adhesive	Gray	120 ft
181-22020	SL2X2BK4	SL2x2								Non-Adhesive	Black	120 ft
181-22030	SLA2X2BK4	SLA2X2								Adhesive	Black	120 ft

Dimensions are approximate and subject to technical changes. Use **Part No.** for ordering and **Type** for specification purposes.

Slotted wall duct in larger sizes continued on the next page. Covers are listed on page 117.