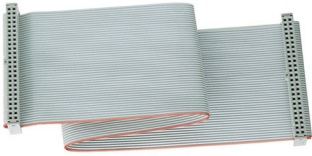


## ACCESSORIES

### CABLE ASSEMBLIES



Several standard cable assemblies to connect controllers to our I/O module mounting racks may be ordered. The 72-CHH cable has a 50-pin header connector on each end to mate with those on mounting racks. The 72-CHE cable has a 50-pin header connector on one end and a 50-pin edge card connector on the other.

### TEST MODULES



Modules for use in system set up and testing may be ordered. Modules 70M-ISW1 and 70G-ISW1 simulates an input; 70M-OSW1 switch simulates an output.

### ORDERING INFORMATION

Part Number	Description
<b>Cable Assemblies</b>	
72-CHH-1	Ribbon cable assembly, header to header, 1 foot long
72-CHH-2	Ribbon cable assembly, header to header, 2 feet long
72-CHH-4	Ribbon cable assembly, header to header, 4 feet long
72-CHH-6	Ribbon cable assembly, header to header, 6 feet long
72-CHE-2	Ribbon cable assembly, header to edge card, 2 feet long
72-CHE-4	Ribbon cable assembly, header to edge card, 4 feet long
72-CHE-6	Ribbon cable assembly, header to edge card, 6 feet long
<b>Test Modules</b>	
70L-ISW	Input module test switch, OpenLine® package
70G-ISW1	Input module test switch, G5 package
70M-ISW1	Input module test switch, mini package
70M-OSW1	Output module test switch, 3 amp, mini package
<b>Fuses</b>	
70-FUSE-3AC	Fuse, 3.15A, 5x20mm, used on all AC Digital Output Modules
70-FUSE-3DC	Fuse, 3.15A, 5x20mm, used on all Solid State OpenLine® DC Digital Output Modules
70-FUSE-H	Fuse holder for Output Modules, used on all Digital Output Modules

### FUSE KITS

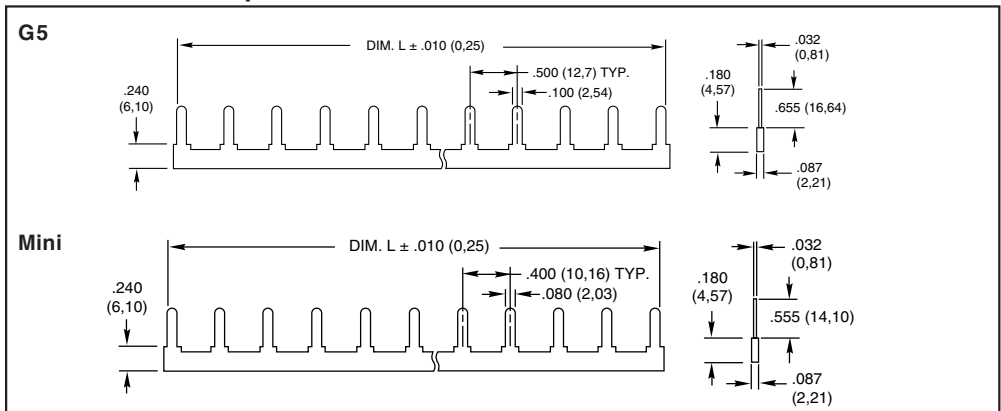
Fuse and fuse holder Replacement kits of 10 can be ordered directly from Grayhill.

**Controller Boards, I/O Modules, Module Racks, and Accessories are available through Authorized Grayhill Industrial Distributors.** For prices and discounts, contact your local sales office, an authorized Industrial Distributor, or Grayhill.

### SYSTEM 50 JUMPER BARS

Grayhill jumper bars are available for applications that require common terminals to be bussed together on digital I/O mounting racks. Jumper bars are available for both our Mini and G5 racks. Grayhill jumper bars are made from .032" thick tin-plated brass. The jumper bars are insulated with a molded sleeve for excellent dielectric properties.

### DIMENSIONS: Jumper Bars



### ORDERING INFORMATION: Jumper Bars for Grayhill G5 and Mini Series I/O Racks

Part Number	Description	Dimension "L" in. (mm)	Use on Grayhill I/O Rack
70G-JUMP8	8 position jumper for G5 I/O racks	3.60 (91,44)	70GRCK8-HL, 70GRCK16-HL, 70GRCM32-HL, 70GRCP32-HL, 70GRCK16I, 70GRCK16T
70G-JUMP12	12 position jumper for G5 I/O racks	5.60 (142,24)	70GRCK16I, 70GRCK16T
70M-JUMP6	6 position jumper for Mini I/O racks	2.08 (52,83)	70MRCQ24-HL
70M-JUMP8	8 position jumper for Mini I/O racks	2.88 (73,15)	70MRCQ24-HL