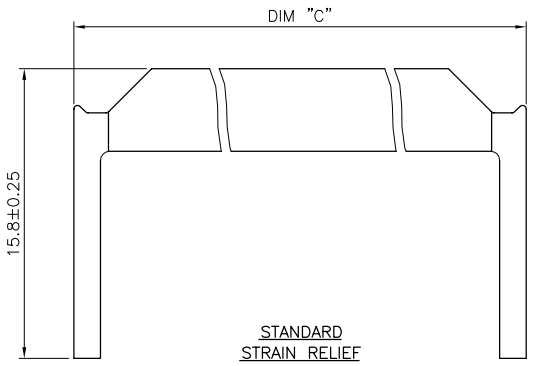
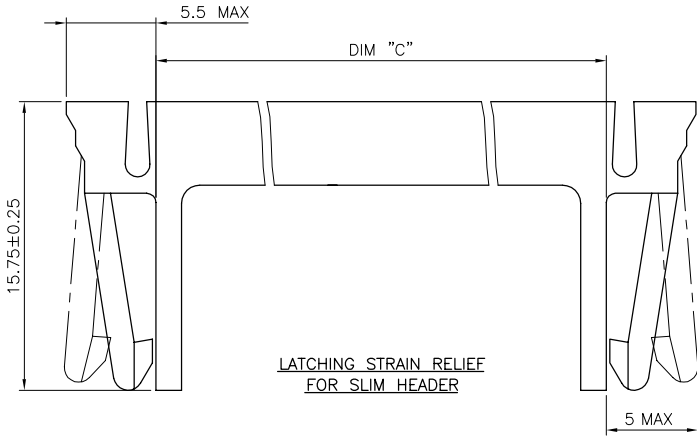


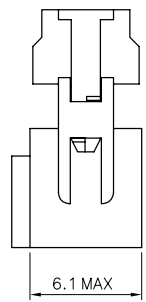
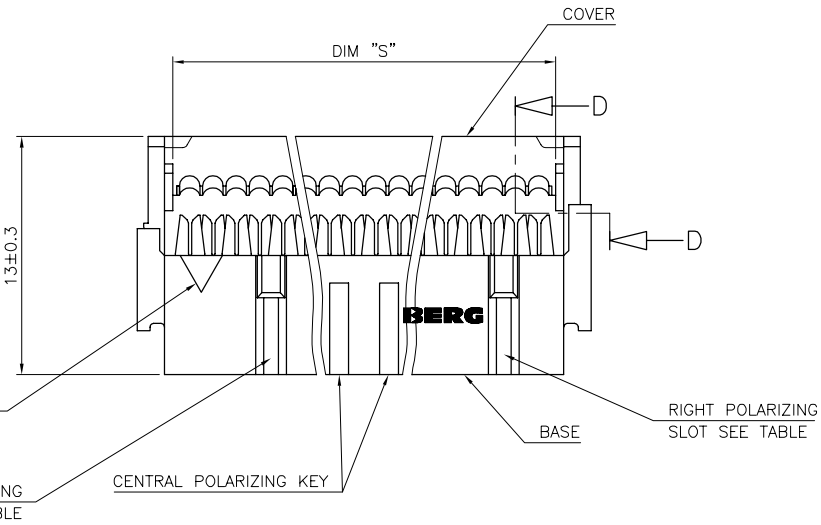
LOW PROFILE STRAIN RELIEF



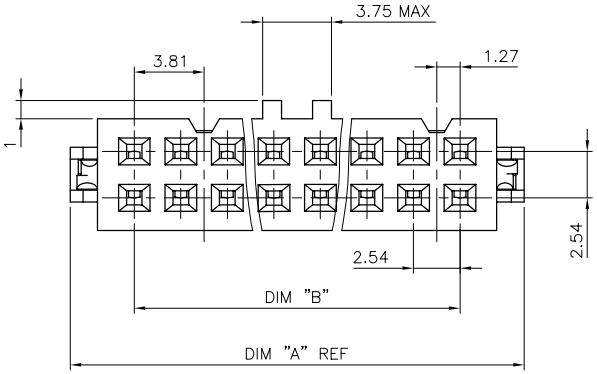
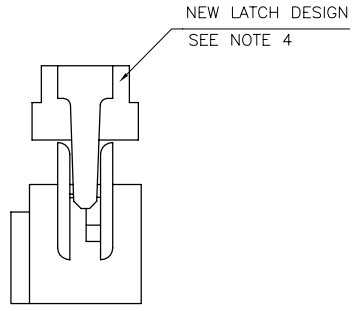
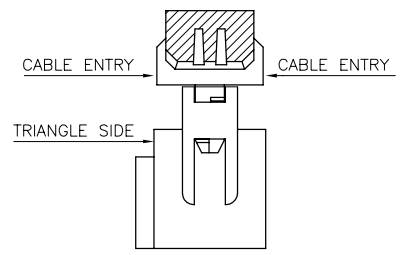
STANDARD STRAIN RELIEF



LATCHING STRAIN RELIEF FOR SLIM HEADER



COVER ORIENTATION



NOTES:

- 1 MATERIAL: BASE AND COVER: 30% GLASS FILLED POLYESTER FLAME RETARDANT PER UL-94-V0 COLOUR GREY STRAIN RELIEF: UNREINFORCED THERMOPLASTIC FLAME RETARDANT PER UL-94-V0 COLOUR GREY CONTACT: PHOSPHOR BRONZE
- 2 PLATING: - CONTACT AREA 0.76µm GOLD - REMAINDER 1.27µm Ni
- 3 TRIANGLE NOT MOLDED-IN ON 2x2 AND 2x3 POSITIONS WITH CENTRAL KEY

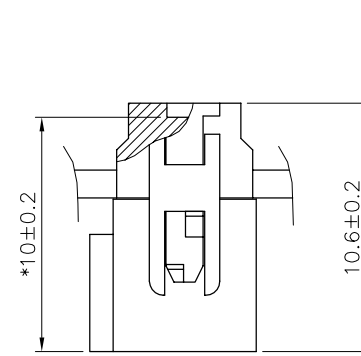
mat'l. code		SEE NOTES		tolerances unless otherwise specified		CUSTOMER COPY		
ltr	ec'n no	dr	date	linear		projection	QUICKIE III FEM 0.76µm Au	
T	F80615	DLE	98.08.26				product family QKIE FEM code 213	
U	V11867	DLE	01.07.20				size dwg no 71602 sheet 1 of 2	
V	V11892	DLE	01.08.10	angles		scale 5:1	A2	
W	F10566	DLE	01.10.24	dr	P. NIZZI 96.02.09			
X	F03019	DLE	03.01.23	engr	JM PHAMVAN 96.02.09			
Y	F03099	DLE	03.04.24	chr	P. NIZZI 96.02.09			
				app	MP 96.02.09			
sheet index	revision sheet	Y	W					
		1	2					

This drawing is the property of FCI Electronics S.p.A. and is intended for use only for the specific product and application for which it was created. It is not to be used for any other purpose without the express written consent of FCI Electronics S.p.A.

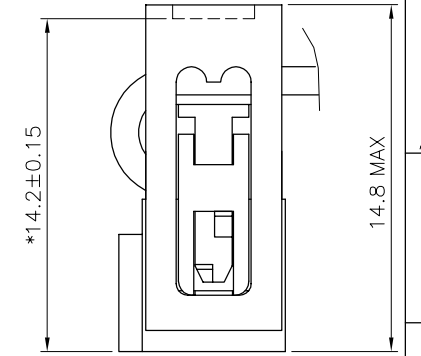


FCI Electronics S.p.A. - Via S. Felice 10 - 20090 Sesto San Giovanni (MI) - Italy
 Tel: +39 02 76001 - Fax: +39 02 76002 - E-mail: fci@fciconnect.com

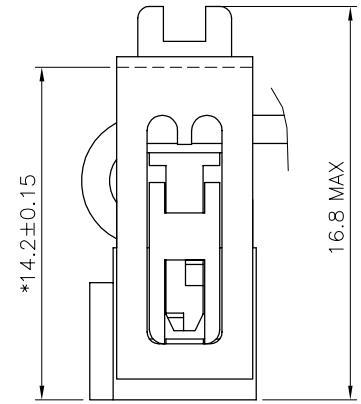
PRODUCT NUMBER	SIZE	DIM "A"	DIM "B"	DIM "C"	DIM "S"	SLOT STYLE
71602-X04	2x 2	9.54	2.54	9.46	5.66	NO SLOT
71602-X06	2x 3	12.08	5.08	12.00	8.20	RIGHT IF NO KEY
71602-X08	2x 4	14.62	7.62	14.54	10.74	RIGHT IF NO KEY
71602-X10	2x 5	17.16	10.16	17.08	13.28	RIGHT SLOT
71602-X12	2x 6	19.70	12.70	19.62	15.82	RIGHT SLOT
71602-X14	2x 7	22.24	15.24	22.16	18.36	RIGHT SLOT
71602-X16	2x 8	24.78	17.78	24.70	20.90	2 SLOTS
71602-X18	2x 9	27.32	20.32	27.24	23.44	2 SLOTS
71602-X20	2x 10	29.86	22.86	29.78	25.98	2 SLOTS
71602-X24	2x 12	34.94	27.94	34.85	31.06	2 SLOTS
71602-X26	2x 13	37.48	30.48	37.40	33.60	2 SLOTS
71602-X30	2x 15	42.56	35.56	42.48	38.68	2 SLOTS
71602-X34	2x 17	47.64	40.64	47.56	43.76	2 SLOTS
71602-X40	2x 20	55.26	48.26	55.18	51.38	2 SLOTS
71602-X44	2x 22	60.34	53.34	60.26	56.46	2 SLOTS
71602-X50	2x 25	67.96	60.96	67.88	64.08	2 SLOTS
71602-X60	2x 30	80.66	73.66	80.58	76.78	2 SLOTS
71602-X64	2x 32	85.74	78.74	85.66	81.86	2 SLOTS



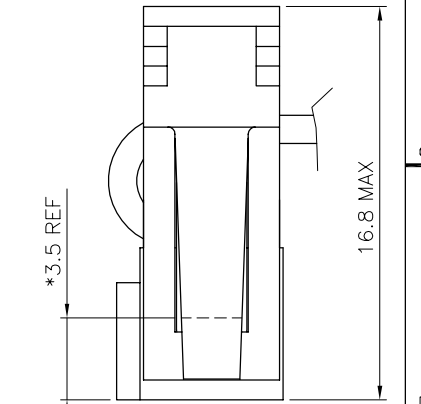
WITHOUT STRAIN RELIEF



WITH LOW PROFILE STRAIN RELIEF



WITH STANDARD STRAIN RELIEF



WITH LATCHING STRAIN RELIEF

AFTER TERMINATION SIDE VIEW OF ASSEMBLY (* LATCHING DIM ON HEADER)

71602-7YY		⊙				⊙	712 724
71602-6YY	⊙					⊙	612 624
71602-5YY		⊙			⊙		504 512 524
71602-4YY		⊙			⊙		
71602-3YY		⊙		⊙			304
71602-2YY	⊙				⊙		204 212 224
71602-1YY	⊙				⊙		
71602-0YY	⊙			⊙			004
PRODUCT NUMBER	WITH CENTRAL KEY	WITHOUT CENTRAL KEY	STANDARD	WITHOUT	LOW PROFILE	LATCHING	DASHES NOT AVAILABLE
	STRAIN RELIEF						

mat'l. code		tolerances unless otherwise specified				CUSTOMER COPY			
l/r	ecp no	dr	date	linear	projection			QUICKIE III FEM 0.76µm Au	
T	F80615	DLE	98.08.26			mm	product family	code	213
U	V11892	DLE	01.08.10				size	dwg no	sheet
V	F03019	DLE	03.01.23	angles			A2	71602	2 of -
W	F03099	DLE	03.04.23	dr	P. NIZZI	96.02.09	scale	N/A	
				engn	JM PHAMVAN	96.02.09			
R	F70423	PNZ	97.05.23	chr	P. NIZZI	96.02.09			
S	F70436	OMA	97.06.05	appd	JM P	96.02.09			
sheet index	revision sheet								