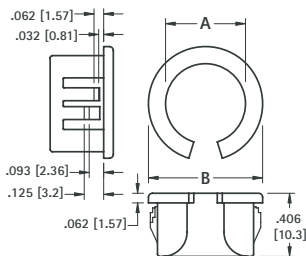


NYLON 6/6 SPLIT BUSHINGS

Designed to be assembled into holes that already contain wire or cable. Versatile bushing can be used on all chassis from .032 (.81) to .125 (3.2) thick.

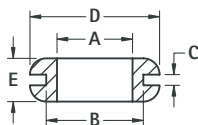
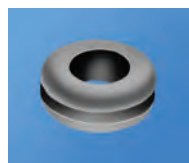


| CAT. NO. | HOLE SIZE REQUIRED | A INSIDE DIAMETER | B HEAD DIAMETER |
|----------|--------------------|-------------------|-----------------|
| 8490 | .375 (9.5) | .265 (6.7) | .421 (10.7) |
| 8491 | .500 (12.7) | .312 (7.9) | .562 (14.3) |
| 8492 | .562 (14.3) | .390 (9.9) | .640 (16.3) |
| 8493 | .625 (15.9) | .453 (11.5) | .687 (17.4) |
| 8494 | .750 (19.1) | .546 (13.9) | .796 (20.2) |
| 8495 | .875 (22.2) | .671 (17.0) | .921 (23.4) |
| 8496 | 1.000 (25.4) | .796 (20.2) | 1.062 (27.0) |

MATERIAL: Nylon 6/6, Black

RUBBER GROMMETS

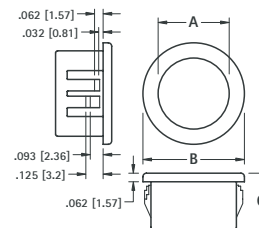
Ideal for electrical insulation and mechanical damping.



MATERIAL: Rubber, BUNA S

| CAT. NO. | A INSIDE DIAMETER | B MTG. HOLE | C PANEL THICKNESS | D | E |
|----------|-------------------|--------------|-------------------|--------------|-------------|
| 730 | .125 (3.2) | .187 (4.7) | .062 (1.57) | .312 (7.9) | .187 (4.7) |
| 733 | .125 (3.2) | .250 (6.4) | .062 (1.57) | .343 (8.7) | .187 (4.7) |
| 734 | .125 (3.2) | .437 (11.1) | .062 (1.57) | .625 (15.9) | .187 (4.7) |
| 735 | .125 (3.2) | .375 (9.5) | .093 (2.36) | .500 (12.7) | .312 (7.9) |
| 736 | .187 (4.7) | .312 (7.9) | .062 (1.57) | .437 (11.1) | .218 (5.5) |
| 737 | .187 (4.7) | .281 (7.2) | .093 (2.36) | .437 (11.1) | .218 (5.5) |
| 738 | .250 (6.4) | .437 (11.1) | .062 (1.57) | .625 (15.9) | .187 (4.7) |
| 739 | .250 (6.4) | .375 (9.5) | .062 (1.57) | .562 (14.3) | .250 (6.4) |
| 740 | .250 (6.4) | .375 (9.5) | .093 (2.36) | .500 (12.7) | .250 (6.4) |
| 741 | .312 (7.9) | .562 (14.3) | .062 (1.57) | .812 (20.6) | .312 (7.9) |
| 742 | .312 (7.9) | .437 (11.1) | .062 (1.57) | .625 (15.9) | .281 (7.1) |
| 743 | .312 (7.9) | .437 (11.1) | .093 (2.36) | .625 (15.9) | .312 (7.9) |
| 744 | .375 (9.5) | .625 (15.9) | .062 (1.57) | .875 (22.2) | .312 (7.9) |
| 745 | .375 (9.5) | .500 (12.7) | .062 (1.57) | .625 (15.9) | .250 (6.4) |
| 732 | .437 (11.1) | .562 (14.3) | .062 (1.57) | .750 (19.1) | .250 (6.4) |
| 746 | .437 (11.1) | .687 (17.4) | .062 (1.57) | .937 (23.8) | .312 (7.9) |
| 747 | .500 (12.7) | .812 (20.6) | .062 (1.57) | 1.062 (27.0) | .312 (7.9) |
| 748 | .500 (12.7) | 1.250 (31.8) | .062 (1.57) | 1.500 (38.1) | .250 (6.4) |
| 749 | .500 (12.7) | .750 (19.1) | .093 (2.36) | .968 (24.6) | .281 (7.1) |
| 750 | .562 (14.3) | .812 (20.6) | .062 (1.57) | 1.062 (27.0) | .312 (7.9) |
| 752 | .625 (15.9) | .875 (22.2) | .062 (1.57) | 1.125 (28.6) | .312 (7.9) |
| 753 | .625 (15.9) | 1.250 (31.8) | .062 (1.57) | 1.500 (38.1) | .250 (6.4) |
| 755 | .750 (19.1) | 1.062 (27.0) | .062 (1.57) | 1.375 (34.9) | .375 (9.5) |
| 756 | .750 (19.1) | 1.437 (36.5) | .062 (1.57) | 1.812 (46.0) | .375 (9.5) |
| 757 | .875 (22.2) | 1.250 (31.8) | .062 (1.57) | 1.625 (41.3) | .437 (11.1) |

Snaps into panel hole to provide protection for wire, cable and tubing from sharp uneven edges.

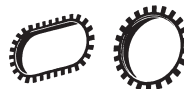
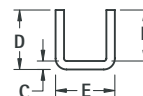
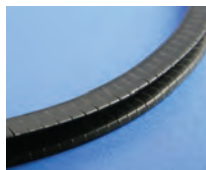


MATERIAL: Nylon 6/6, Black

| CAT. NO. | HOLE SIZE REQUIRED | MAXIMUM CHASSIS THICKNESS | A INSIDE DIAMETER | B HEAD DIAMETER | C OVERALL HEIGHT |
|----------|--------------------|---------------------------|-------------------|-----------------|------------------|
| 8470 | .250 (6.4) | .062 (1.57) | .125 (3.2) | .312 (7.9) | .312 (7.9) |
| 8471 | .312 (7.9) | .062 (1.57) | .187 (4.7) | .375 (9.5) | .312 (7.9) |
| 8472 | .375 (9.5) | .125 (3.2) | .250 (6.4) | .468 (11.9) | .406 (10.3) |
| 8473 | .437 (11.1) | .125 (3.2) | .312 (7.9) | .531 (13.5) | .406 (10.3) |
| 8474 | .500 (12.7) | .125 (3.2) | .375 (9.5) | .578 (14.7) | .406 (10.3) |
| 8475 | .562 (14.3) | .125 (3.2) | .437 (11.1) | .656 (16.7) | .406 (10.3) |
| 8476 | .625 (15.9) | .125 (3.2) | .500 (12.7) | .718 (18.2) | .406 (10.3) |
| 8477 | .750 (19.1) | .125 (3.2) | .562 (14.3) | .843 (21.4) | .406 (10.3) |
| 8478 | .875 (22.2) | .125 (3.2) | .625 (15.9) | .953 (24.2) | .453 (11.5) |
| 8479 | 1.000 (25.4) | .125 (3.2) | .750 (19.1) | 1.125 (28.6) | .453 (11.5) |
| 8480 | 1.187 (30.1) | .125 (3.2) | .937 (23.8) | 1.312 (33.3) | .453 (11.5) |
| 8481 | 1.250 (31.8) | .125 (3.2) | .937 (23.8) | 1.359 (34.5) | .453 (11.5) |
| 8482 | 1.375 (34.9) | .125 (3.2) | 1.000 (25.4) | 1.468 (37.3) | .453 (11.5) |
| 8483 | 1.500 (38.1) | .125 (3.2) | 1.062 (27.0) | 1.609 (40.9) | .453 (11.5) |
| 8484 | 1.750 (44.5) | .125 (3.2) | 1.375 (34.9) | 1.875 (47.6) | .453 (11.5) |
| 8485 | 2.000 (50.8) | .125 (3.2) | 1.625 (41.3) | 2.125 (54.0) | .453 (11.5) |
| 8486 | 2.500 (63.5) | .250 (6.4) | 1.968 (50.0) | 2.656 (67.5) | .718 (18.2) |

FLEXIBLE GROMMETTING

Ideal for maintenance, short-run production, R&D or prototyping. Supplied in 25 ft. rolls. Make your own grommets to fit any size or shape required.



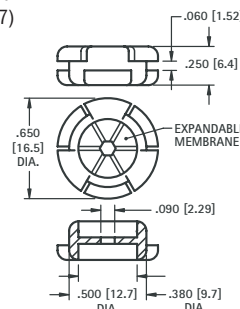
MATERIAL: Nylon 6/6, Black

| CAT. NO. | MAX PANEL | B | C | D | E |
|----------|-------------|------------|------------|------------|------------|
| 8615 | .052 (1.32) | .135 (3.4) | 0.55 (1.4) | .190 (4.8) | .139 (3.5) |
| 8616 | .085 (2.16) | .145 (3.7) | 0.55 (1.4) | .200 (5.1) | .182 (4.6) |
| 8617 | .125 (3.18) | .165 (4.2) | 0.55 (1.4) | .220 (5.6) | .232 (5.9) |

"UNIVERSAL" RUBBER GROMMET

Designed to adjust to different wire, cable or tubing diameters from .125 (3.2) to .312 (7.9)

- Self-adjusting membrane forms a dust resistant seal
- Installs in .500 (12.7) diameter hole in .062 (1.57) thick panels or boards
- Molded outer ring retains grommet in place



CAT. NO. 777

MATERIAL: Thermoplastic Rubber, Black