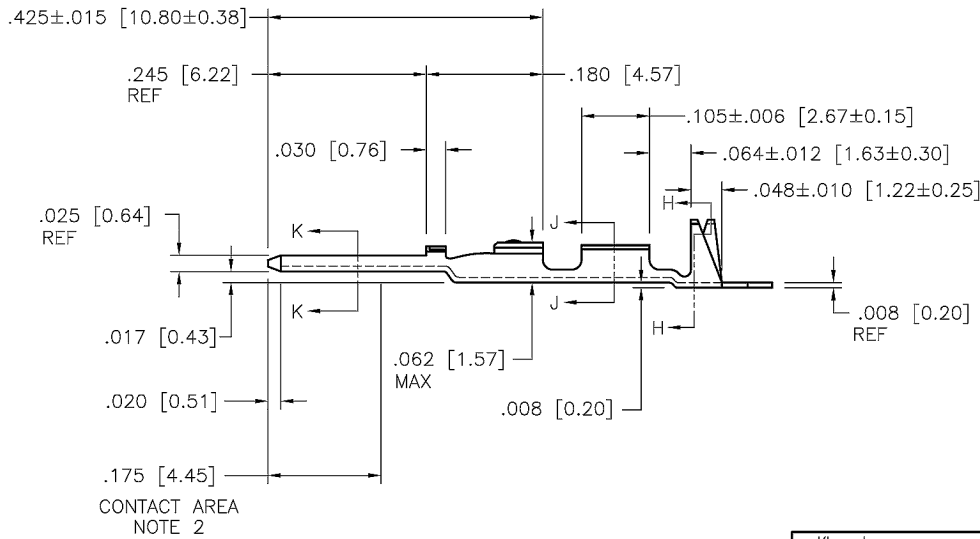
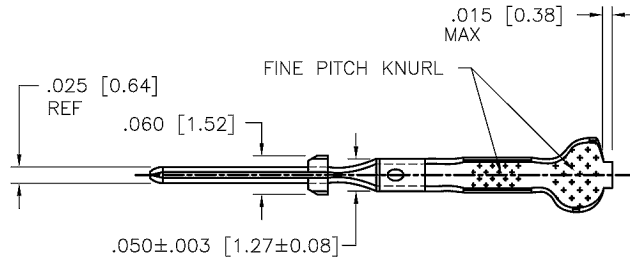


48116-000LF : 22-26 AWG

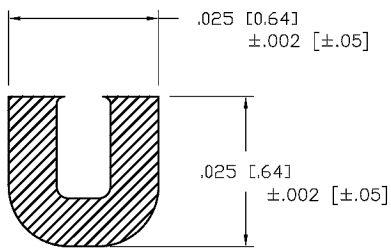
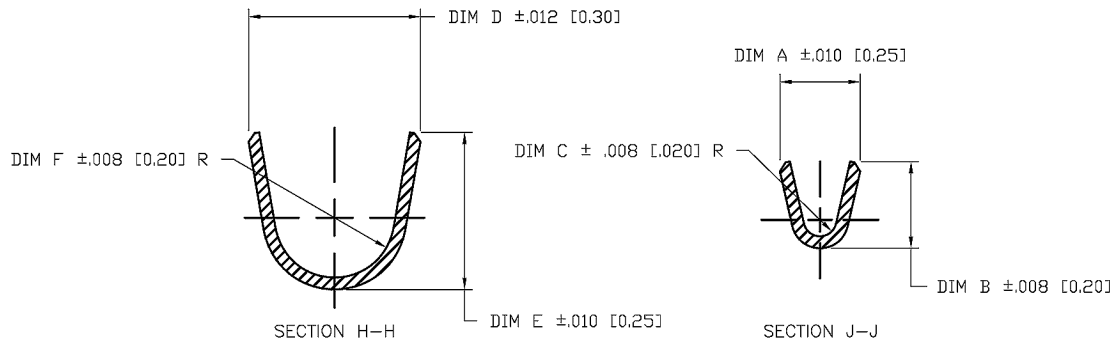


PRODUCT NUMBER
SEE SHEET 2



mat'l. code SEE NOTE 1				surface <input checked="" type="checkbox"/> tolerance		projection		product family PV TERMINALS	
ltr	ecr no	dr	date	tolerances unless otherwise specified				title	
F	V41701	LSS	1994-11-22	angles		INCH/MM		C.T.W. MALE PIN LOOSE PIECE	
G	V05-0254	HTB	2005-03-18	inches		scale 4:1		dwg no	
H	V06-0583	HTB	2006-06-27	0° ±2'				sheet 1 of 2	
J	V08-0114	HTB	2008-04-01	dr				size	
				engr				48115	
				chr				A4	
				appd				type	
sheet	revision	J	J					CUSTOMER Drawing	
index	sheet	1	2						

PRODUCT NUMBER	AWG	DIM A	DIM B	DIM C	DIM D	DIM E	DIM F
48115-000	O B S O L E T E						
48115-000LF	28-32	.054 [1.37]	.058 [1.47]	.011 [0.28]	.115 [2.92]	.105 [2.67]	.040 [1.02]
48116-000	O B S O L E T E						
48116-000LF	22-26	.070 [1.78]	.065 [1.65]	.017 [0.43]	.139 [3.53]	.120 [3.05]	.050 [1.27]
48117-000	O B S O L E T E						
48117-000LF	18-20	.104 [2.64]	.104 [2.64]	.021 [0.53]	.139 [3.53]	.120 [3.05]	.050 [1.27]



NOTE 1
CONTACT AREA SECTION K-K SCALE 40:1

NOTES:

- MATERIAL: 3/4 HD. BRASS ALLOY 260.
- PLATING: ELECTRODEPOSITED GOLD 50u"/1.27u IN CONTACT AREA, REMAINDER GOLD FLASH. UNDERPLATE 50u"/1.27u NICKEL
- TERMINAL MAY BE USED WITH MINI LATCH HOUSING.
- APPLICABLE SPECIFICATION:
 - BUS-12-098 PRODUCT SPECIFICATION.
 - TA-211 CRIMP SPECIFICATION.
- PRODUCT MEETS EUROPEAN UNION DIRECTIVES AND OTHER COUNTRY REGULATIONS AS DESCRIBED IN GS-22-008.
- THIS PRODUCT IS NOT INTENDED TO BE EXPOSED TO MANUFACTURING SOLDER PROCESSES.

mat'l. code		surface		tolerance		projection		product family	
SEE NOTE 1		✓		tolerances unless otherwise specified		INCH/MM		PV TERMINALS	
ltr	ecrn no	dr	date	angles	lines	scale 10:1		title	
J				° ±2'	XXX ±.01/XX±3 XXX ±.005/XX±13			C.T.W. MALE PIN LOOSE PIECE	
					XXXX ±.0020/XXX±.051			dwg no	
		dr	L. SANDERS	1994-11-28			sheet 2 of 2		size
		engr	T. HANNA	1994-11-28			48115		A4
		chr	T. BREWBAKER	1994-11-28			type		CUSTOMER Drawing
		appd	T. HANNA	1994-11-28					
sheet index	revision sheet								