

# MINT2270

## 270 Watt Dual Output Series



**Medical - Universal Input Power Supply**

**2 Year Warranty**

- Size: 3.35" x 7.17" x 1.17"
- Up to 90% Efficiency Typical
- Natural Interleaving Technology for PFC
- LLC Technology for DC Converter
- Remote ON/OFF by PS-ON Signal
- DC-OK, AC-OK Signal Active
- Medical Approval - EN60601-1



International Safety Standard Approvals



### Specifications

All specifications are typical at nominal input, full load at 25°C unless otherwise stated

#### Output Specifications

Total regulation	(Line and Load)	24V+/- 2%; 5VS +/-5%
Ripple & Noise		1% Vout p-p max.
Transient Response		0.5 msec for 50% load change with 5 msec high load and 5 msec low load
Protection	Over Current Protection Short Circuit Protection Over Voltage Protection Over Temperature Protection	Hiccup mode Hiccup mode Built-in, latch off Auto recovery
Output Connector	4 pin, Dinkle	P/N: DT-25-B01W-04
Remote on/off	PS-ON	on=logic high, off=logic low or open
AC-OK Signal		High level when input voltage exceed 68V Low level when input voltage below 68V
DC-OK Signal		High level when output voltage is in normal range Low level when over current, over voltage, under voltage, short circuit and PS-ON disabled

#### Input Specifications

Voltage		100-240VAC, +/-10%
Frequency		47-63Hz
Input Current		3A max. @115VAC input
Inrush Current	264VAC (Cold start)	45A max.
Input Fuse	UL/IEC127	T6.3A, 250VAC
Leakage Current	264VAC @ 50Hz	260uA typical
Input Harmonic		IEC61000-3-2
Input Configuration	3 pin, Dinkle	P/N: DT-25-B01W-03

#### Environmental Specifications

Operating Temperature		0-70° C refer to the derating curve
Storage Temperature		-40 -- 85° C
Relative Humidity		0%-95%
Altitude	Operating	-500 to 10,000 ft. MSL
	Non-Operating	-500 to 40,000 ft. MSL

# MINT2270

## 270 Watt Dual Output Series

### Medical - Universal Input Power Supply

Medical Model	Output No.	Voltage Output	Output Current	Total Regulation	OCP Limit	OVP Limit	Ripple/ Noise
MINT2270A1976E01	1	5V	0.2A	5%	1.5A	7.0V	1%
	2	24V	11.25A	2%	15.5A	30V	1%

#### Condor Part Number Key

M	I	N	T	2	270	A	19	76	E	01
Medical	Internal	Standard	Factory Location	No. of Outputs	Output Wattage	Design Rev of Product	Multiple Output Code	Output Connector	Input Connector	Standard Configuration

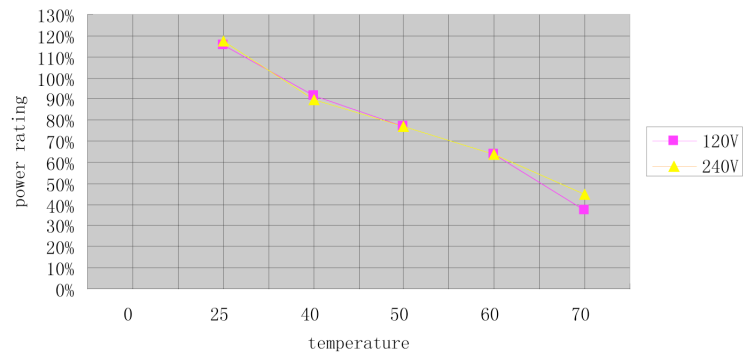
#### General Specifications

Efficiency	90% Typical
Turn-on Time	< 2 sec (5V)
Hold-up Time	>16 msec min.
Isolation voltage	Input/Output Input/Earth Output/Earth
	4000VAC 1500VAC 707VDC
Approvals and Safety	EN/IEC/UL 60601-1, CSA 22.2 No. 60601-1
Dimensions	W 3.35" x L 7.17" x H 1.17"
Weight	550 Grams

#### EMC Specifications

Conducted Emissions:	FCC Part 15 Subpart B / EN55011 Class B
Radiated Emissions:	FCC Part 15 Subpart B / EN55011 Class B
ESD Air:	IEC 61000-4-2, 8kV
ESD Contact:	IEC 61000-4-2, 6kV
Conducted Immunity:	IEC 61000-4-6, 3Vrms
Radiated Immunity:	IEC 61000-4-3, 3V/m
Fast Transients:	IEC 61000-4-4, 2kV/5kHz
Surge:	IEC 61000-4-5, 1kV Differential, 2kV Common
Voltage Dip Immunity:	IEC 61000-4-11 240VAC, 0%/0.5 cycle, 40%/5 cycles, 70%/25 cycles

#### Output Power Derating Curve

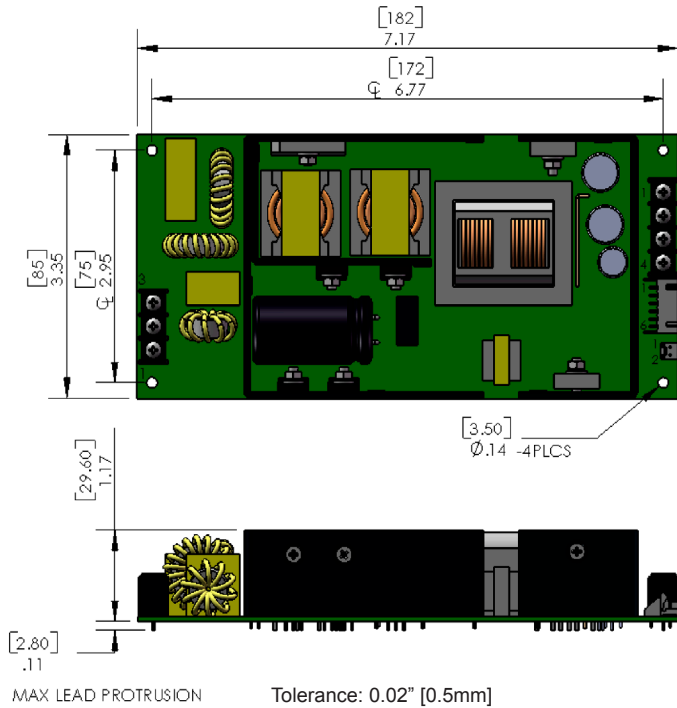


# MINT2270

270 Watt Dual Output Series

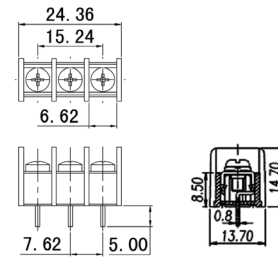
Medical - Universal Input Power Supply

## Mechanical Specifications



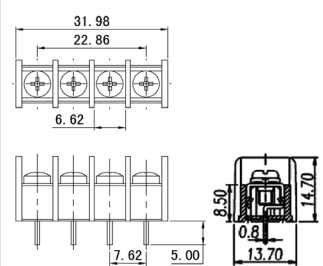
## Connector Drawings

CON1 (3 pin):



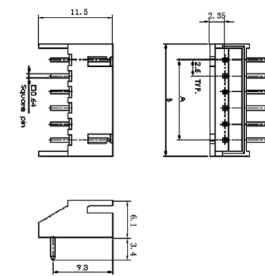
Dinkle: DT-25-B01W-03

CON2 (4 pin):



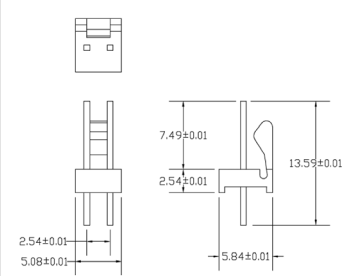
Dinkle: DT-25-B01W-04

CON3 (6 pin):



LANDWIN: 2502P0600T

CON4(2 pin):



AMP: 640456-2

### Input Connector – CON1

Pin 1	FG
Pin 2	AC Neutral
Pin 3	AC Line

### Output Connector – CON2

Pin	Single
1	RTN
2	RTN
3	24V
4	24V

### Output Connector – CON3

Pin	Single
1	RTN
2	RTN
3	5VSB
4	DC-OK
5	AC-OK
6	PS-ON

### Output Connector – CON4

Pin 1	RTN
Pin 2	24V FOR FAN

