

# LABELS THAT STICK & STAY STUCK

RHINO labels are as exceptional as the RHINO 6500. Easy to use and super-strong, they're designed for the long haul. Thanks to industrial-strength adhesives, they deliver the lasting durability and legibility you demand – for a multitude of applications. To meet your high standards, RHINO labels are designed to work exclusively with our printers and perform on a variety of surfaces (smooth, curved, textured, and highly textured).

- Easy-to-peel, split-back styles will speed you along.
- Industrial-strength adhesives help these labels stick and stay stuck – in harsh worksite conditions.
- Thermal transfer print technology produces labels that are durable, smear-proof and resistant to chemicals, solvents, heat, UV and more.

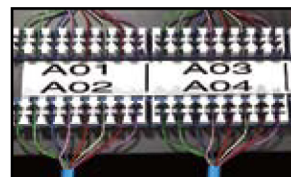


NEW! RHINO self-laminating labels feature a clear wrap-around tail that protects your printed area. Ideal for wire and cable identification, these versatile labels offer excellent conformity to round, irregular and flexible surfaces:



- Specially-formulated to stick and last – on wire and cable
- Clear tail wraps around and laminates text to provide additional protection

Use RHINO 6500 to create these and other labels...



**RHINO 6500 Professional Labeling Bundle**  
Part No. 1734521 UPC: 0 71701 12175 2

**Includes:**  
RHINO 6500 Printer  
RHINO CONNECT Software  
1" Black on White Flexible Nylon Label Cartridge  
3/8" Black on White Vinyl Label Cartridge  
Li-ion Rechargeable Battery Pack  
AC Adapter  
USB Cable  
Quick Reference Guide  
Registration Card

Master Carton  
Units: 3  
Weight: 14 lbs (6350.3 grams)  
Dimensions: 16"H x 12"W x 11"D  
(406.4mm x 304.8mm x 279.4mm)

DYMO

## RHINO LABELS

**FLEXIBLE NYLON** – Curved or flat surfaces. Wires, patch panels, machinery, equipment, bins, etc.

PART #	DESCRIPTION	LENGTH
18488	White Flexible Nylon Tape 1/2" (12mm)	11.5'
18489	White Flexible Nylon Tape 3/4" (19mm)	11.5'
<b>NEW</b> 1734524	White Flexible Nylon Tape 1" (24mm)	11.5'
18490	Yellow Flexible Nylon Tape 1/2" (12mm)	11.5'
18491	Yellow Flexible Nylon Tape 3/4" (19mm)	11.5'
<b>NEW</b> 1734525	Yellow Flexible Nylon Tape 1" (24mm)	11.5'

**PERMANENT POLYESTER** – Flat surfaces. Equipment, bins, patch panels, etc.

PART #	DESCRIPTION	LENGTH
18482	White Perm Poly Tape 3/8" (9mm)	18'
18483	White Perm Poly Tape 1/2" (12mm)	18'
18484	White Perm Poly Tape 3/4" (19mm)	18'
<b>NEW</b> 1734523	White Perm Poly Tape 1" (24mm)	18'
18508	Clear Perm Poly Tape 3/8" (9mm)	18'
622289	Clear Perm Poly Tape 1/2" (12mm)	18'
622290	Clear Perm Poly Tape 3/4" (19mm)	18'
18485	Metallized Perm Poly Tape 3/8" (9mm)	18'
18486	Metallized Perm Poly Tape 1/2" (12mm)	18'
18487	Metallized Perm Poly Tape 3/4" (19mm)	18'

**VINYL** – All surfaces. Ideal for outdoor and color-coding applications. Warning messages, wires, patch panels, equipment, machinery, etc.

PART #	DESCRIPTION	LENGTH
18443	White Vinyl 3/8" (9mm)	18'
18444	White Vinyl 1/2" (12mm)	18'
18445	White Vinyl 3/4" (19mm)	18'
18431	Yellow Vinyl 3/8" (9mm)	18'
18432	Yellow Vinyl 1/2" (12mm)	18'
18433	Yellow Vinyl 3/4" (19mm)	18'
18434	Orange Vinyl 3/8" (9mm)	18'
18435	Orange Vinyl 1/2" (12mm)	18'
18436	Orange Vinyl 3/4" (19mm)	18'
18437	Red Vinyl 3/8" (9mm)	18'
18438	Red Vinyl 1/2" (12mm)	18'
18439	Red Vinyl 3/4" (19mm)	18'
18440	Green Vinyl 3/8" (9mm)	18'
18441	Green Vinyl 1/2" (12mm)	18'
18442	Green Vinyl 3/4" (19mm)	18'

**HEAT SHRINK TUBE** – Wire and cable.

PART #	DESCRIPTION	LENGTH
18051	White Heat Shrink Tube 1/4" (6mm)	5'
18053	White Heat Shrink Tube 3/8" (9mm)	5'
18055	White Heat Shrink Tube 1/2" (12mm)	5'
18057	White Heat Shrink Tube 3/4" (19mm)	5'
18052	Yellow Heat Shrink Tube 1/4" (6mm)	5'
18054	Yellow Heat Shrink Tube 3/8" (9mm)	5'
18056	Yellow Heat Shrink Tube 1/2" (12mm)	5'
18058	Yellow Heat Shrink Tube 3/4" (19mm)	5'

**NON-ADHESIVE** – Patch panels, distribution blocks, faceplates, etc.

PART #	DESCRIPTION	LENGTH
18111	White Non-Adhesive Tag 1/4" (6mm)	18'
18112	White Non-Adhesive Tag 3/8" (9mm)	18'
18113	White Non-Adhesive Tag 1/2" (12mm)	18'
18114	White Non-Adhesive Tag 3/4" (19mm)	18'
18115	Yellow Non-Adhesive Tag 1/4" (6mm)	18'
18116	Yellow Non-Adhesive Tag 3/8" (9mm)	18'
18117	Yellow Non-Adhesive Tag 1/2" (12mm)	18'
18118	Yellow Non-Adhesive Tag 3/4" (19mm)	18'

**SELF LAMINATING** – Wire and cable.

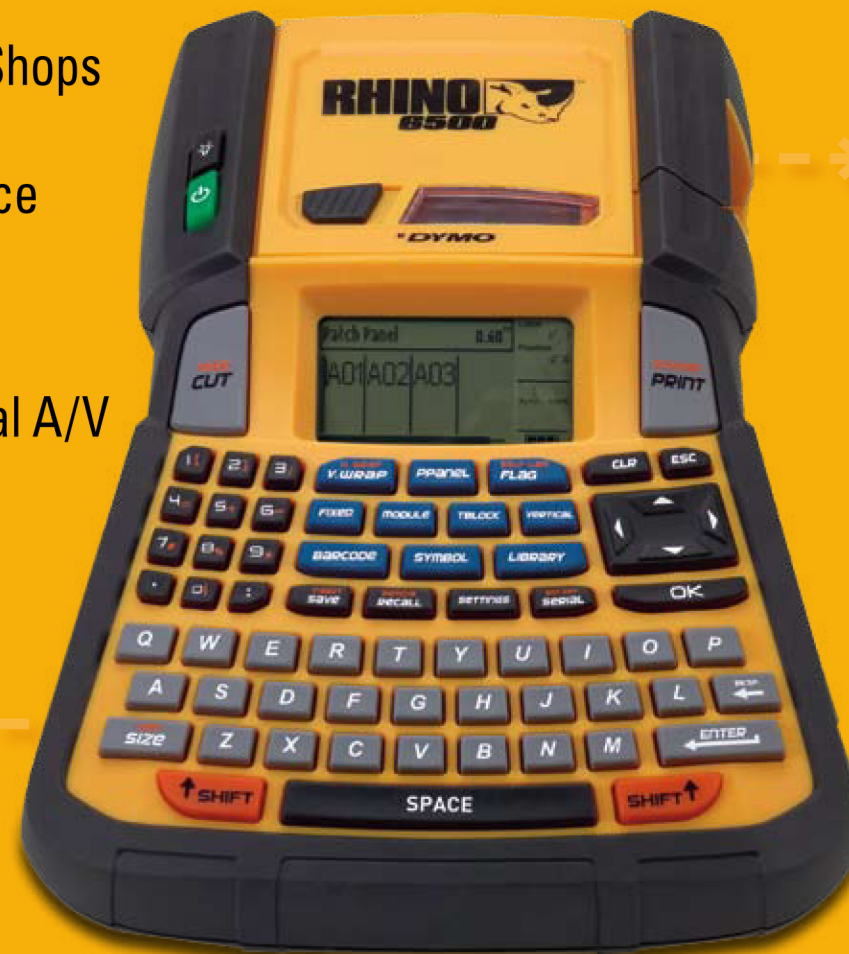
PART #	DESCRIPTION	LENGTH
<b>NEW</b> 1734821	White Self-Laminating 1" x 1" (24mm x 24mm)	18'

**RHINO** PROFESSIONAL LABELING TOOLS  
HOW DO YOU SIGN YOUR WORK?™

# RHINO 6500

## PROFESSIONAL LABELING TOOL

- Assembly Shops
- Facility Maintenance
- Electrical
- Datacom
- Professional A/V
- Security



Quickly create labels right from your desk or shop bench with the user-friendly QWERTY keyboard. Or, instantly download labels from your PC. Even batch processing label kits is easy with RHINO's first-ever desktop label printer.

- PC connectivity with the ability to download labels with graphics and logos – ideal for facility management and assembly shops.
- QWERTY keyboard for faster typing.
- Auto-cutter for batch printing labels without user intervention.
- "Hot Keys" for instant wire and cable wraps, flags, vertical and fixed length labels, patch panels, distribution modules and advanced serialized labels.
- Over 250 easy-to-find, pre-programmed industry terms and symbols to save you time.
- Memory to store over 1,000 custom labels, including terms, graphics, logos and symbols.
- Large graphic display with backlight for previewing multiple labels or entire label files.
- Prints on industrial-strength RHINO labels, NOW up to 1" wide.



Includes **RHINO CONNECT™** Software

**RHINO** PROFESSIONAL LABELING TOOLS  
HOW DO YOU SIGN YOUR WORK?™

# RHINO 6500

## PROFESSIONAL LABELING TOOL

Power, speed and ease-of-use are RHINO's signature qualities. And, now they are available in a desktop model for the very first time.

The RHINO 6500 is ideal for assembly shop environments such as panel builders and wire harness shops – or any place that you would like to kit labels and bring on the worksite. Just format labels using RHINO CONNECT software (included), and with a touch of the Auto-Cutter button, all your labels will be printed, cut and ready for your assembly department.

Of course, the RHINO 6500 is also perfect for facility management as well as electrical, datacom, Pro A/V and other system installations. In fact, its ability to download PC files ensures that labels are standardized for multiple buildings or multi-site projects.

Featuring RHINO's largest array of advanced features, you'll love having the power of a RHINO right on your desktop.

**Intuitive Graphical Interface**  
Create, edit and preview multiple labels on the large backlit LCD

**Auto-Cutter**  
During a batch print, motorized cutter automatically cuts each label as it is printed – can be turned on or off

**Hot Keys**  
Eliminate guesswork, complicated menus and enjoy fast and easy formatting of commonly-used label types

**Save Your Labels**  
Customize over 1,000 labels with logos and symbols – and recall them instantly

**Symbols**  
Over 100 pre-programmed industry symbols

**QWERTY Keyboard**  
Familiar keyboard layout for easier typing

**Powerful Serialization**  
Built-in wizards for simple and advanced serializations

**Integrated Impact Bumpers**  
Protects against harsh conditions while allowing easy access to label cartridge

**Power-Assisted Cartridge Ejection System**  
With automatic label size sensor

**Quick-Charge Li-Ion Rechargeable Battery**  
With on-screen battery life indicator

**Library**  
Over 150 pre-programmed industry terms and the ability to customize your own library of terms, graphics, logos and symbols

**Compact Size**  
11.5"L x 3.5"W x 8.06"H requires little desktop space — also transports easily with built-in handle



### PC CONNECTIVITY

- Upload/download label files for in-the-field and on demand printing.
- Insert customized graphics, logos, symbols and industry terms.
- Import data from any Windows® based program.
- Create labels using the integrated step-by-step wizard.
- Print labels directly from RHINO CONNECT™ Software\*.
- Windows® driver included on RHINO CONNECT™ Software for printing from any Windows® program via USB interface.
- Upgrade printer firmware when new features become available.

# DURABLE

# EASY

# FAST