



Designers' Choice

INTERCONNECT BATTERY HOLDERS

ALUMINUM HOLDERS CONNECTED IN SERIES

ELIMINATES WIRING • LABOR SAVING

Features pre-connected jumper strap insulated from the Aluminum base. Batteries held in series circuit without need of additional wiring.

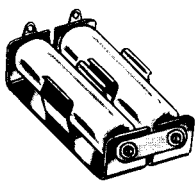


FIG. 2

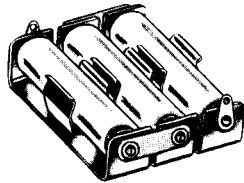


FIG. 3

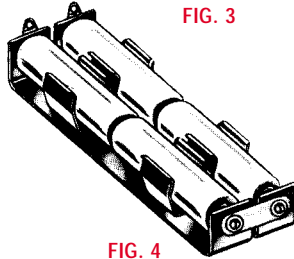


FIG. 4

CAT. NO.	HOLDS NO. OF CELLS	FIG. NO.	BATTERY CROSS REFERENCE			
			EVEREADY	DURACELL	RAY-O-VAC	NEDA
			All Batteries listed within boxes are in the same size group			
"AA" CELL HOLDERS			(BATTERY SIZE $\frac{.531}{.565}$ O.D. \times $\frac{1.906}{1.988}$ H)			
146	2	2	E9, EV15, EN91, CH15, E133, E133N, E177, 505, 523, 1015, 1215	ZM9, RM12R, NC15AA, M15F, M15AA, TR133R, TR177, M505, MN1500, PC1500	5AA, 615, 815, 7AA	15, 15A, 15C, 15D, 15F, 15M, 15NC, 221, 1101M, 1113M, 1306AP, 1306M, 1314M, 1606M
147	3	3				
148	4	4				
"C" CELL HOLDERS			(BATTERY SIZE $\frac{.875}{1.125}$ O.D. \times $\frac{1.875}{1.969}$ H)			
149	2	2	CH35, E93, 935, 1235, EV35, EN93	M14F, M14HD, NC14C, TR286, MN1400, PC1400	1C, 614, 814	14A, 14C, 14D, 14F, 14NC, 1600M
150	3	3				
151	4	4				
"D" CELL HOLDERS			(BATTERY SIZE $\frac{1.187}{1.375}$ O.D. \times $\frac{2.312}{2.412}$ H)			
152	2	2	CH50, E95, 950, 1250, EV50, EN95	M13F, NC13D, S42, M13HD, TR289, MN1300, PC1300	2D, 6D, 613, 813	13A, 13C, 13D, 13F, 13NC, 1115M, 1810M
153	3	3				
158	4	4				

ALUMINUM HOLDERS WITH PC LUGS

ELIMINATES WIRING • LABOR SAVING

For printed circuitry we have standardized our most popular holders with PC Lugs. Choice of single or multiple holders "AA" and "C" assembled with Cat. No. 4002 lug. "D" assembled with Cat. No. 4003 lug.

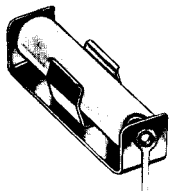


FIG. 1

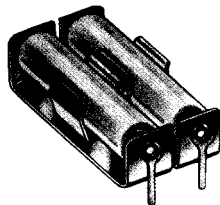


FIG. 2

CAT. NO.	HOLDS NO. OF CELLS	FIG. NO.	BATTERY CROSS REFERENCE			
			EVEREADY	DURACELL	RAY-O-VAC	NEDA
			All Batteries listed within boxes are in the same size group			
"AA" CELL HOLDERS			(BATTERY SIZE $\frac{.531}{.565}$ O.D. \times $\frac{1.906}{1.988}$ H)			
2222	1	1	E9, EV15, EN91, CH15, E133, E133N, E177, 505, 523, 1015, 1215	ZM9, RM12R, NC15AA, M15F, M15AA, TR133R, TR177, M505, MN1500, PC1500	5AA, 615, 815, 7AA	15, 15A, 15C, 15D, 15F, 15M, 15NC, 221, 1101M, 1113M, 1306AP, 1306M, 1314M, 1606M
2223	2	2				
"C" CELL HOLDERS			(BATTERY SIZE $\frac{.875}{1.125}$ O.D. \times $\frac{1.875}{1.969}$ H)			
2224	1	1	CH35, E93, 935, 1235, EV35, EN93	M14F, M14HD, NC14C, TR286, MN1400, PC1400	1C, 614, 814	14A, 14C, 14D, 14F, 14NC, 1600M
2225	2	2				
"D" CELL HOLDERS			(BATTERY SIZE $\frac{1.187}{1.375}$ O.D. \times $\frac{2.312}{2.412}$ H)			
2226	1	1	CH50, E95, 950, 1250, EV50, EN95	M13F, NC13D, S42, M13HD, TR289, MN1300, PC1300	2D, 6D, 613, 813	13A, 13C, 13D, 13F, 13NC, 1115M, 1810M
2227	2	2				

STEEL HOLDERS WITH PC LUGS

ELIMINATES WIRING • LABOR SAVING

For printed circuitry we have standardized our most popular holders with PC Lugs. Choice of single or multiple holders "AA" and "C" assembled with Cat. No. 4002 lug. "D" assembled with Cat. No. 4003 lug.



FIG. 3

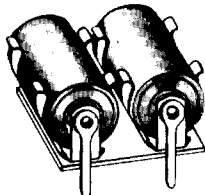


FIG. 4

CAT. NO.	HOLDS NO. OF CELLS	FIG. NO.	BATTERY CROSS REFERENCE			
			EVEREADY	DURACELL	RAY-O-VAC	NEDA
			All Batteries listed within boxes are in the same size group			
"AA" CELL HOLDERS			(BATTERY SIZE $\frac{.531}{.565}$ O.D. \times $\frac{1.906}{1.988}$ H)			
2228	1	3	E9, EV15, EN91, CH15, E133, E133N, E177, 505, 523, 1015, 1215	ZM9, RM12R, NC15AA, M15F, M15AA, TR133R, TR177, M505, MN1500, PC1500	5AA, 615, 815, 7AA	15, 15A, 15C, 15D, 15F, 15M, 15NC, 221, 1101M, 1113M, 1306AP, 1306M, 1314M, 1606M
2229	2	4				
"C" CELL HOLDERS			(BATTERY SIZE $\frac{.875}{1.125}$ O.D. \times $\frac{1.875}{1.969}$ H)			
2230	1	3	CH35, E93, 935, 1235, EV35, EN93	M14F, M14HD, NC14C, TR286, MN1400, PC1400	1C, 614, 814	14A, 14C, 14D, 14F, 14NC, 1600M
2231	2	4				
"D" CELL HOLDERS			(BATTERY SIZE $\frac{1.187}{1.375}$ O.D. \times $\frac{2.312}{2.412}$ H)			
2232	1	3	CH50, E95, 950, 1250, EV50, EN95	M13F, NC13D, S42, M13HD, TR289, MN1300, PC1300	2D, 6D, 613, 813	13A, 13C, 13D, 13F, 13NC, 1115M, 1810M
2233	2	4				