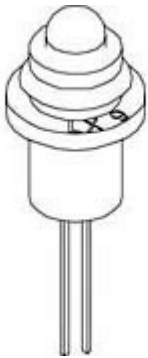




We Tame Photons to Work for You!



Products > LED Indicators > Panel Indicators > Round > Rear Insertion > 5mm



Features / Options

- ▶ Bi-Color Styles Optional
- ▶ State-of-the-Art, LED Technology
- ▶ Choice of LED Colors and Lens Finishes
- ▶ Insulated Lead Lengths Optional
- ▶ Easy installation through panel

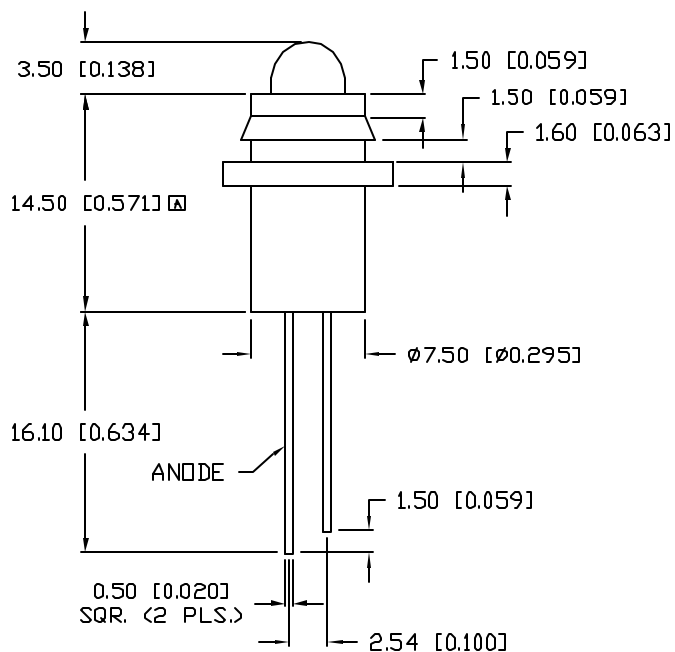
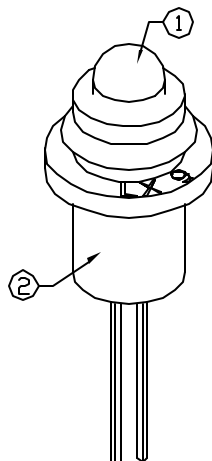
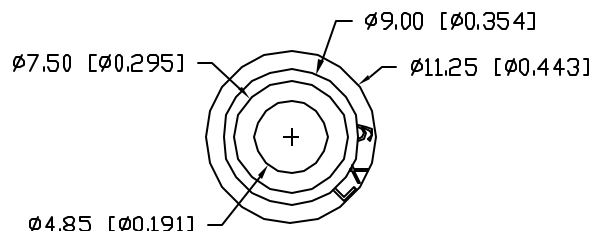
Applications / Uses

- ▶ Front Panel Status Indicators
- ▶ Alarm/Warning Indicators
- ▶ Front Panel Circuit Fault Indicators
- ▶ Instrument Control Panels
- ▶ Medical Diagnostics Indicators
- ▶ Industrial Automation Control Panels

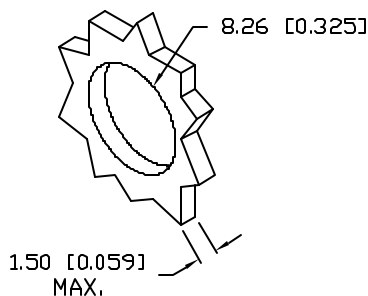
| Part Number: | Brightness | Material | Emitted Color | Wavelength | Intensity | View Angle | Voltage | | |
|------------------|------------|----------|---------------|------------|-----------|------------|---------|--|---|
| SSI-LXH9GD | STANDARD | GaP | Green | 565 | 30 | 60 | 2.2 | | — |
| SSI-LXH9GD-150 | STANDARD | GaP | Green | 565 | 30 | 60 | 2.2 | | — |
| SSI-LXH9GD-5V | STANDARD | GaP | Green | 565 | 20 | 60 | 5.0 | | — |
| SSI-LXH9GD5V-150 | STANDARD | GaP | Green | 565 | 20 | 60 | 5.0 | | — |
| SSI-LXH9HGW | STANDARD | GaP | Red/Green | 700/565 | 6/30 | 60 | 2.0/2.2 | | — |
| SSI-LXH9HGW-150 | STANDARD | GaP | Red/Green | 700/565 | 5/25 | 60 | 2.0/2.2 | | — |
| SSI-LXH9ID | STANDARD | GaAsP | Red | 635 | 40 | 60 | 2.0 | | — |
| SSI-LXH9ID-150 | STANDARD | GaAsP | Red | 635 | 40 | 60 | 2.0 | | — |
| SSI-LXH9ID-5V | STANDARD | GaAsP | Red | 635 | 20 | 60 | 5.0 | | — |
| SSI-LXH9ID5V-150 | STANDARD | GaAsP | Red | 635 | 20 | 60 | 5.0 | | — |
| SSI-LXH9SID-150 | HIGH | AllnGaP | Red | 636 | 100 | 60 | 2.0 | | — |

UNCONTROLLED DOCUMENT

| | | |
|-------------|-------------------------------------|---------|
| PART NUMBER | | REV. |
| SSI-LXH9GD | | B |
| REV. | E.C.N. NUMBER AND REVISION COMMENTS | DATE |
| A | E.C.N. #10427. | 5.15.98 |
| B | E.C.N. #10BRDR. & REDRAWN IN 3D. | 1.8.02 |



PANEL CUTOUT



ELECTRO-OPTICAL CHARACTERISTICS $T_A=25^\circ\text{C}$ $I_f=20\text{mA}$

| PARAMETER | MIN | TYP | MAX | UNITS | TEST COND |
|--------------------|----------------|-----|-----|----------|----------------------|
| PEAK WAVELENGTH | | 565 | | nm | |
| FORWARD VOLTAGE | | 2.2 | 2.6 | V_f | |
| REVERSE VOLTAGE | 5.0 | | | V_r | $I_r=100\mu\text{A}$ |
| AXIAL INTENSITY | | 30 | | med | $I_f=20\text{mA}$ |
| VIEWING ANGLE | | 60 | | 2x theta | |
| EMITTED COLOR: | GREEN | | | | |
| EPOXY LENS FINISH: | GREEN DIFFUSED | | | | |

LIMITS OF SAFE OPERATION AT 25°C

| PARAMETER | MAX | UNITS |
|--------------------------------|------------|----------------------|
| PEAK FORWARD CURRENT* | 150 | mA |
| STEADY CURRENT | 25 | mA |
| POWER DISSIPATION | 105 | mW |
| DERATE FROM 25°C | -1.2 | mW/ $^\circ\text{C}$ |
| OPERATING, STORAGE TEMP. | -40 TO +85 | $^\circ\text{C}$ |
| SOLDERING TEMP. | +260 | $^\circ\text{C}$ |
| 2.0mm FROM BODY | | 3 SEC. MAX |

* $t < 10\mu\text{s}$

NOTES:

- SSL-LX509F3GD, GREEN LED.
- SSH-LXH9 BLACK RUBBER HOUSING.

*UNLESS OTHERWISE SPECIFIED TOLERANCES PER DECIMAL PRECISION ARE: X=±1 (±0.039), XX=±0.5 (±0.020), XXX=±0.25 (±0.010), XXXX=±0.127 (±0.005). LEAD SIZE=±0.05 (±0.002), LEAD LENGTH=±0.75 (±0.030), MIN= ^{+0.00} -0.00 DECIMAL PRECISION MAX.= ^{+0.00} -0.00 DECIMAL PRECISION

UNCONTROLLED DOCUMENT

| | | | |
|--|---------------------------|---|---|
| REV. B | PART NUMBER SSI-LXH9GD | <p>CONFIDENTIAL INFORMATION</p> <p>THE INFORMATION CONTAINED IN THIS DOCUMENT IS THE PROPERTY OF LUMEX INC. EXCEPT AS SPECIFICALLY AUTHORIZED IN WRITING BY LUMEX INC., THE HOLDER OF THIS DOCUMENT SHALL KEEP ALL INFORMATION CONTAINED HEREIN CONFIDENTIAL AND SHALL PROTECT SAME IN WHOLE OR IN PART FROM DISCLOSURE AND DISSEMINATION TO ALL THIRD PARTIES.</p> <p>RELIABILITY NOTE</p> <p>OUR MANY YEARS OF EXPERIENCE DATA ACCUMULATION INDICATE THAT SOLDER HEAT IS A MAJOR CAUSE OF EARLY AND FUTURE FAILURE. PLEASE PAY ATTENTION TO YOUR SOLDERING PROCESS.</p> | |
| T-5mm 565nm GREEN LED PANEL INDICATOR, GREEN DIFFUSED LENS. | | <p>DRAWN BY: BC</p> | <p>CHECKED BY:</p> <p>APPROVED BY:</p> <p>DATE: 1.14.97 PAGE: 1 OF 1 SCALE: N/A</p> |