

Rotary Head, Momentary Action with Lever and Plastic Roller 022
4 Positions - 90 degrees IP66

| <u>Features</u> | <u>Housing</u> | <u>Action</u> | <u>Part Number</u> |
|---|--|---------------------------|------------------------|
| 022 Offset 32.5 or 45 Positive Break | Thermoplastic case with double insulation and metal actuator head | Dependent Action NC+NO | <u>83857313</u> |
| 022 Offset 32.5 or 45 Positive Break | Thermoplastic case with double insulation and metal actuator head | Dependent Action NC+NO | <u>83856313</u> |

Rotary Head, Momentary Action with Lever and Plastic Roller 050
4 Positions - 90 degrees IP66

| <u>Features</u> | <u>Housing</u> | <u>Action</u> | <u>Part Number</u> |
|---------------------------------|--|---------------------------|------------------------|
| 050 Offset 46 Positive Break | Thermoplastic case with double insulation and metal actuator head | Dependent Action NC+NO | <u>83857317</u> |
| 022 Offset 46 Positive Break | Thermoplastic case with double insulation and metal actuator head | Dependent Action NC+NO | <u>83856317</u> |

Rotary Head, Momentary Action with Lever and Plastic Roller 050
4 Positions - 90 degrees IP66

| <u>Features</u> | <u>Housing</u> | <u>Action</u> | <u>Part Number</u> |
|---|--|---------------------------|------------------------|
| 050 Offset 53.5 to 69.5 Positive Break | Thermoplastic case with double insulation and metal actuator head | Dependent Action NC+NO | <u>83857318</u> |
| 050 Offset 53.5 to 69.5 Positive Break | Thermoplastic case with double insulation and metal actuator head | Dependent Action NC+NO | <u>83856318</u> |

Conform to the following standards :

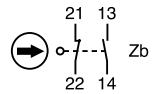
IEC 536-1, IEC 947-5-1, CSA C22.2 N°14
 EN 50047, EN 60204-1, EN 60947-5-1
 NFC 20030 class II for 83 854
 class I for 83 855
 UL 508, VDE 0660/200

Degree of protection : IP 66

Function : Four-terminal double break contact element (form Zb) with positive opening NC contacts.
 The two moving contacts are electrically isolated from one another.

Principle :

Dependent action contact (1 NC + 1 NO)
 Break before make



After actuation, the safety contact remains locked open in position "NC". It is unlocked by pressing the reset button.

Electrical characteristics :

Assigned insulation voltage (Ui) : 500 V
 Thermal rating (Ith) : 10 A
 Use category : A300 - Q300
 AC15 = 6A/250 V - 1.9 A / 380 V
 DC 13 = 3A/24 V

Short circuit test (under IEC 947.5.1 § 8.3.4)

- Current peak 1000 A at 250 V ~ 0.5 <math><math>\cos \varphi < 0.7</math></math>
- Short circuit protection (SCPD) : fuse 10 A gF
- Electrical protection by internal earth terminal (83 850)

Connections :

Saddle washer and M 3.5 screw
 Max. wire cross-section : 2 x 1.5 mm² or 1 x 2.5 mm²

Connection :

For No. 13 sealing gland

Approvals :

Slow break NC + NO version
 UL / CSA : please consult us.

Part number

| | |
|--|-------------------------------------|
| Thermoplastic case | Ø 22 |
| and metal head | Ø 50 |
| Metal bodies and | Ø 22 |
| actuator heads | Ø 50 |
| Special option - configuration EN 50047 | |
| Control mechanisms - adjustable actuator heads 4 positions 90° | |
| Steel plunger | |
| Plunger with steel roller | |
| Lever with plastic roller | vertical |
| | lateral |
| Rotary head, momentary action to right and left (1) | |
| With lever and plastic roller | Ø 19 offset 21 or 53 |
| | Ø 22 offset 33.5 or 40 |
| | Ø 50 offset 47 |
| | Ø 50 offset 53.5 |
| With adjustable lever and plastic roller | Ø 22 offset 32.5 or 45 |
| | Ø 50 offset 46 |
| | Ø 50 adjustable offset 53.5 to 69.5 |

Sequence

Dependent action

Positive break operation

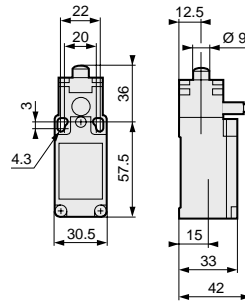
Mechanical characteristics

| | |
|----------------------------------|---------------------------------|
| Minimum operating force | N - (cmN) |
| Minimum total travel force | N - (cmN) |
| Minimum positive operating force | N - (cmN) |
| Minimum operating travel | mm - (°) |
| Minimum positive opening travel | mm - (°) |
| Differential travel | mm - (°) |
| Max. total travel | mm - (°) |
| Mechanical life | 10 ⁶ operations min. |
| Temperature limits | Use ° C |
| | Stored ° C |
| Degree of protection | |
| Weight (plastic/metal) | g |

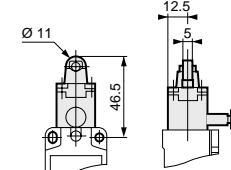
(1) Action either right or left according to position of head

Dimensions

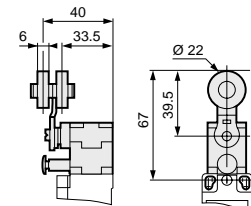
83 856 011 - 83 857 011



83 856 511 - 83 857 511



83 856 311 - 82 857 311



Other information

To order, specify :

Standard products
 Standard products, non stocked

1 Part number

Example : Limit switch with manual reset - 83 857 011

