

Lever with Plastic Roller - Lateral- Adjustable Actuator Head 4 Positions - 90 degrees IP66

<u>Features</u>	<u>Housing</u>	<u>Action</u>	<u>Part Number</u>
Positive Break	Thermoplastic case with double insulation and metal actuator head	Dependent Action NC+NO	<u>83857211</u>
Positive Break	Metal bodies and actuator head	Dependent Action NC+NO	<u>83856211</u>

**Rotary Head, Momentary Action with Lever and Plastic Roller 019
4 Positions - 90 degrees IP66**

<u>Features</u>	<u>Housing</u>	<u>Action</u>	<u>Part Number</u>
019 Offset 21 or 53 Positive Break	Thermoplastic case with double insulation and metal actuator head	Dependent Action NC+NO	<u>83857312</u>
019 Offset 21 or 53 Positive Break	Metal bodies and actuator head	Dependent Action NC+NO	<u>83856312</u>

**Rotary Head, Momentary Action with Lever and Plastic Roller 022
4 Positions - 90 degrees IP66**

<u>Features</u>	<u>Housing</u>	<u>Action</u>	<u>Part Number</u>
022 Offset 33.5 or 40 Positive Break	Thermoplastic case with double insulation and metal actuator head	Dependent Action NC+NO	<u>83857311</u>
022 Offset 33.5 or 40 Positive Break	Metal bodies and actuator head	Dependent Action NC+NO	<u>83856311</u>

**Rotary Head, Momentary Action with Lever and Plastic Roller 050
4 Positions - 90 degrees IP66**

<u>Features</u>	<u>Housing</u>	<u>Action</u>	<u>Part Number</u>
050 Offset 47 Positive Break	Thermoplastic case with double insulation and metal actuator head	Dependent Action NC+NO	<u>83857315</u>
050 Offset 47 Positive Break	Metal bodies and actuator head	Dependent Action NC+NO	<u>83856315</u>

**Rotary Head, Momentary Action with Lever and Plastic Roller 050
4 Positions - 90 degrees IP66**

<u>Features</u>	<u>Housing</u>	<u>Action</u>	<u>Part Number</u>
050 Offset 53.5 Positive Break	Thermoplastic case with double insulation and metal actuator head	Dependent Action NC+NO	<u>83857316</u>
022 Offset 53.5 Positive Break	Metal bodies and actuator head	Dependent Action NC+NO	<u>83856316</u>

Conform to the following standards :

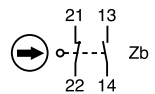
IEC 536-1, IEC 947-5-1, CSA C22.2 N°14
 EN 50047, EN 60204-1, EN 60947-5-1
 NFC 20030 class II for 83 854
 class I for 83 855
 UL 508, VDE 0660/200

Degree of protection : IP 66

Function : Four-terminal double break contact element (form Zb) with positive opening NC contacts.
 The two moving contacts are electrically isolated from one another.

Principle :

Dependent action contact (1 NC + 1 NO)
 Break before make



After actuation, the safety contact remains locked open in position "NC". It is unlocked by pressing the reset button.

Electrical characteristics :

Assigned insulation voltage (Ui) : 500 V
 Thermal rating (Ith) : 10 A
 Use category : A300 - Q300
 AC15 = 6A/250 V - 1.9 A / 380 V
 DC 13 = 3A/24 V

Short circuit test (under IEC 947.5.1 § 8.3.4)

- Current peak 1000 A at 250 V~0.5 < cos φ < 0.7
- Short circuit protection (SCPD) : fuse 10 A gF
- Electrical protection by internal earth terminal (83 850)

Connections :

Saddle washer and M 3.5 screw
 Max. wire cross-section : 2 x 1.5 mm² or 1 x 2.5 mm²

Connection :

For No. 13 sealing gland

Approvals :

Slow break NC + NO version
 UL / CSA : please consult us.

Part number

Thermoplastic case	Ø 22
and metal head	Ø 50
Metal bodies and	Ø 22
actuator heads	Ø 50
Special option - configuration EN 50047	
Control mechanisms - adjustable actuator heads 4 positions 90°	
Steel plunger	
Plunger with steel roller	
Lever with plastic roller	vertical
	lateral
Rotary head, momentary action to right and left (1)	
With lever and plastic roller	Ø 19 offset 21 or 53
	Ø 22 offset 33.5 or 40
	Ø 50 offset 47
	Ø 50 offset 53.5
With adjustable lever and plastic roller	Ø 22 offset 32.5 or 45
	Ø 50 offset 46
	Ø 50 adjustable offset 53.5 to 69.5

Sequence

Dependent action

Positive break operation

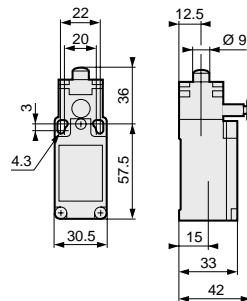
Mechanical characteristics

Minimum operating force	N - (cmN)
Minimum total travel force	N - (cmN)
Minimum positive operating force	N - (cmN)
Minimum operating travel	mm - (°)
Minimum positive opening travel	mm - (°)
Differential travel	mm - (°)
Max. total travel	mm - (°)
Mechanical life	10 ⁶ operations min.
Temperature limits	Use ° C
	Stored ° C
Degree of protection	
Weight (plastic/metal)	g

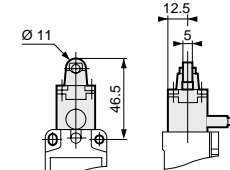
(1) Action either right or left according to position of head

Dimensions

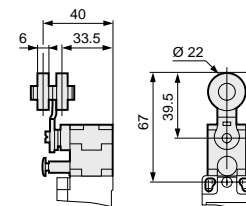
83 856 011 - 83 857 011



83 856 511 - 83 857 511



83 856 311 - 82 857 311



Other information

To order, specify :

Standard products
 Standard products, non stocked



Part number

Example : Limit switch with manual reset - 83 857 011

