

URNS COUNTING DIALS

CA-10

FEATURES

- Internal lock mechanism provided
- Simple Installation

LIST OF PART NUMBERS

Item	Part number
Analog type	CA-10

RoHS compliant



STANDARD SPECIFICATIONS

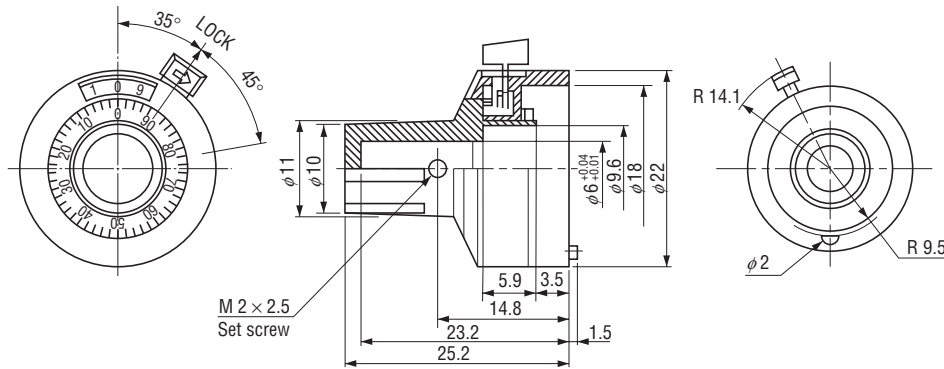
Item	Part number	Analog type
		CA-10
No. of digits		—
No. of turns		10 turns (3600°)
Minor scale division		1/50 turn
Minimum scale division		—
Shaft diameter	mm	φ 6
Maximum rotational speed	min ⁻¹	50
Rotational torque	mN·m {gf·cm} maximum	9.81 {100}
Rocking torque	N·m {kgf·cm} maximum	0.069 {0.7}
Indicator shift in rocking		1 scale maximum
Life		2 million turns (in 30 min ⁻¹)
Operating temp. range	°C	-40 ~ 85
Net weight	g	Approx. 15

CA-10 TURNS COUNTING DIALS

OUTLINE DIMENSIONS

(Unit: mm)

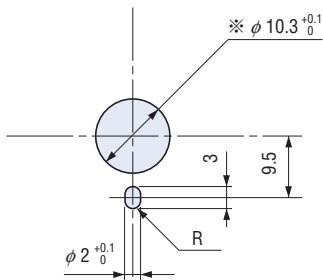
● Analog dial CA-10



DIMENSION AND LOCATION OF MOUNTING HOLES (RECOMMENDED)

● CA-10

(Unit: mm)



※ : Dimensions show those in case of mounting M-22S10, M-22E10.
For hexagonal wrench is provided as an option.

<CA-10>

- Install so that no radial load will be applied to the shaft.
- Use a 0.89 hexagonal wrench for the set screw, and tighten with torque of less than 0.147 N·m {1.5 kgf·cm}.