

Switch Language

English

Need Assistance?

- [Contact Us](#)
- [Find a Distributor](#)
- [Order Samples](#)
- [Tech Library](#)

[Printer-friendly page](#)

[Email this page](#)

[Home](#) [PCB Headers](#) [Datasheet](#)

Part Number: 0026481055

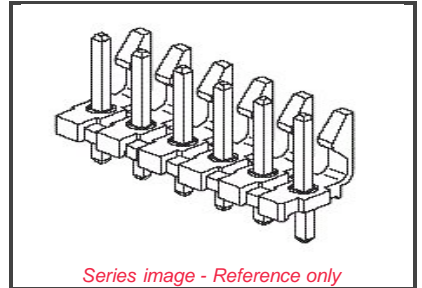
Status: Active

Description: 3.96mm (.156") Pitch KK® Header, Breakaway, Vertical, Square Pin, with Friction Lock, 5 Circuits, Tin (Sn) Plating

Documents:

Note - Please disable browser pop-up blockers for documents on www.molex.com

- [Drawing \(PDF\)](#)
- [Product Specification PS-08-50 \(PDF\)](#)
- [3D Model](#)
- [Related Catalog Page \(PDF\)](#)



Order Products:

- [Check Distributor Inventory](#)
- [Add to My Parts](#)
- [Request Samples](#)

Part Detail: [\(show all\)](#)

[General](#) [Physical](#) [Electrical](#) [Material Info](#)

General

| | |
|----------------|-----------------------|
| Product Family | PCB Headers |
| Series | 41671 |
| Application | Wire-to-Board |
| Product Name | KK® |

Physical

| | |
|--------------------------------|--------------|
| Breakaway | Yes |
| Circuits (Loaded) | 5 |
| Circuits (maximum) | 5 |
| Color - Resin | Black |
| Durability (mating cycles) min | 25 cycles |
| Flammability | 94V-0 |
| Lock to Mating Part | Yes |
| Material - Metal | Brass |
| Material - Plating Mating | Tin |
| Material - Resin | Polyester |
| Number of Rows | 1 |
| Orientation | Vertical |
| PC Tail Length (in) | 0.172 In |
| PC Tail Length (mm) | 4.37 mm |
| PCB Locator | No |
| PCB Retention | None |
| PCB Thickness Recommended (in) | 0.062 In |
| PCB Thickness Recommended (mm) | 1.60 mm |
| Packaging Type | Bag |
| Pitch - Mating Interface (in) | 0.156 In |
| Pitch - Mating Interface (mm) | 3.96 mm |
| Polarized to Mating Part | Yes |
| Polarized to PCB | No |
| Shrouded | Partial |
| Stackable | No |
| Temperature Range - Operating | 0°C to +75°C |
| Termination Interface: Style | Through Hole |

Electrical

EU RoHS

ELV and RoHS Compliant

China RoHS



Need more information on product compliance?

Email productcompliance@molex.com

Please visit the [Contact Us](#) section for any non-product compliance questions.

| | |
|--|------------------------|
| Duration at Max. Process Temperature (seconds) | 5 |
| Lead-free Process Capability | Wave Capable (TH only) |
| Max. Cycles at Max. Process Temperature | 1 |
| Process Temperature max. C | 235 |

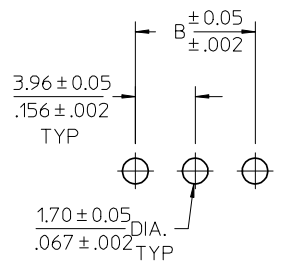
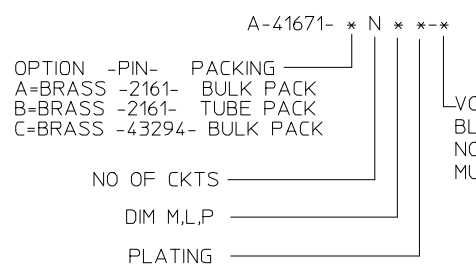
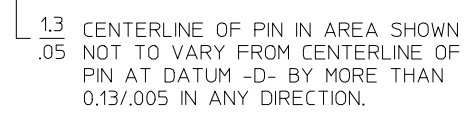
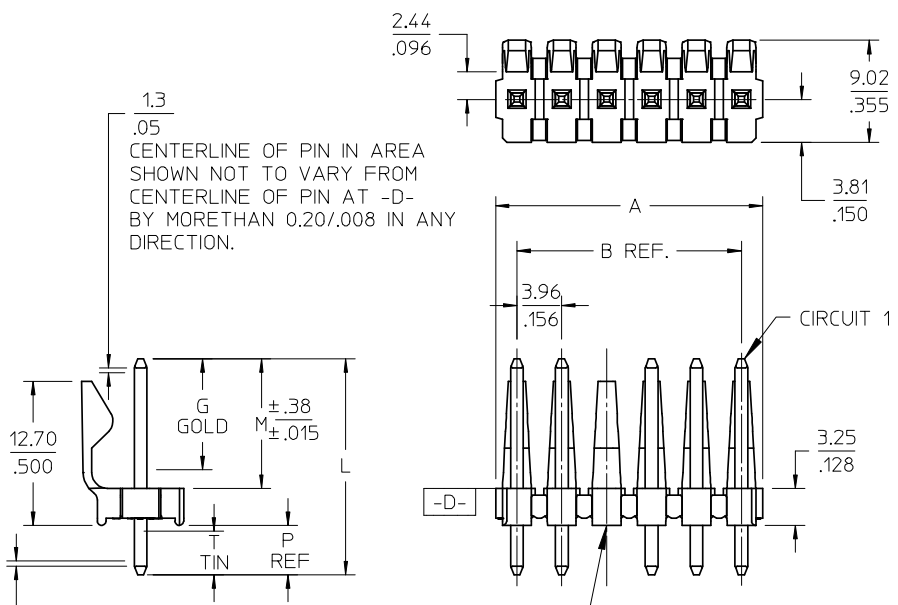
Search Parts in this Series

[41671](#) Series

Mates With

[3069](#) Crimp Housing, [2139](#) Crimp Housing, [6442](#) KK Crimp Housing, [41695](#) Crimp Housing, [7674](#) IDT Assembly, [7675](#) IDT Connector,, [41815](#) PCB Connector, [2145](#) PCB Connector, [3215](#) KK PCB Connector

| | |
|------------------------------------|-----------------|
| CSA | LR19980 |
| Current - Maximum | 7.000 Amp |
| UL | E29179 |
| Voltage - Maximum | 250V |
| Material Info | |
| Old Part Number | A-41671-A05A102 |
| Reference - Drawing Numbers | |
| Product Specification | PS-08-50 |
| Sales Drawing | SD-41671-001 |



NOTES:

- MATERIAL: POLYESTER, 94V-0, MOLDED BLACK
- FINISH: PER ES-88
 - (102) OVERALL TIN: 0.00508/.000200 MIN. OVER 0.00254/.000100 MIN. COPPER.
 - (122) OVERALL TIN: 0.00381/.000150 MIN
 - OVERALL NICKEL: .00076/.000030 MIN
 - (208) SELECT GOLD: 0.00038/.000015 MIN.
 - *SELECT TIN: 0.00254/.000100 MIN.,
 - OVERALL NICKEL UNDERPLATE: 0.00127/.000050 MIN.
 - (228) SELECT GOLD: 0.00076/.000030 MIN.,
 - *SELECT TIN: 0.00254/.000100 MIN.,
 - OVERALL NICKEL UNDERPLATE: 0.00127/.000050 MIN.
 - (501) OVERALL GOLD: 0.00051/.000020
 - OVERALL NICKEL: 0.00076/.000030
 - (503) OVERALL GOLD: 0.00076/.000030
 - OVERALL NICKEL: 0.00127/.000050
- THE PRIMARY SHIPPING CARTON WILL BE LABELED *COMPLIANT TO RoHS DIRECTIVE 2002/95/EC AND ELV ANNEX II OF DIRECTIVE 2000/53/EC*. CARTONS WITHOUT THIS LABEL MAY CONTAIN PRODUCT WITH TIN-LEAD PLATING.
- PRODUCT SPECIFICATION: PS-08-50.
- PACKAGING INFO: SEE TABLE.
- SOLDERABILITY: PER SMES-152.
- PIN PUSH-OUT FORCE: PRIOR TO SOLDERING, 3 LB MIN. FORCE IN EITHER DIRECTION SHALL BE REQUIRED TO PUSH THE PIN OUT OF THE HEADER.
- PARTS ARE STACKABLE END TO END ON 3.96/.156 CENTERS. (SPACING TABS MUST BE REMOVED ON CIRCUIT SIZES 1-23 BEFORE PARTS ARE STACKABLE.
- THIS PART CONFORMS TO CLASS B REQUIREMENTS OF COSMETIC SPECIFICATION PS-45499-002.

| CKT | B | A |
|-----|----------------|----------------------------|
| 2 | 3.96 .156 | 6.78/7.87 .267/.310 |
| 3 | 7.92 .312 | 10.74/11.84 .423/.466 |
| 4 | 11.89 .468 | 14.71/15.80 .579/.622 |
| 5 | 15.85 .624 | 18.67/19.76 .735/.778 |
| 6 | 19.81 .780 | 22.63/23.72 .891/.934 |
| 7 | 23.77 .936 | 26.59/27.69 1.047/1.090 |
| 8 | 27.74 1.092 | 30.56/31.65 1.203/1.246 |
| 9 | 31.70 1.248 | 34.52/35.61 1.359/1.402 |
| 10 | 35.66 1.404 | 38.48/39.57 1.515/1.558 |
| 11 | 39.62 1.560 | 42.44/43.54 1.671/1.714 |
| 12 | 43.59 1.716 | 46.41/47.50 1.827/1.870 |
| 13 | 47.55 1.872 | 50.37/51.46 1.983/2.026 |
| 14 | 51.51 2.028 | 54.33/55.42 2.139/2.182 |
| 15 | 55.47 2.184 | 58.29/59.39 2.295/2.338 |
| 16 | 59.44 2.340 | 62.26/63.35 2.451/2.494 |
| 17 | 63.40 2.496 | 66.22/67.31 2.607/2.650 |
| 18 | 67.36 2.652 | 70.18/71.27 2.763/2.806 |
| 19 | 71.32 2.808 | 74.14/75.23 2.919/2.962 |
| 20 | 75.29 2.964 | 78.11/79.20 3.075/3.118 |
| 21 | 79.25 3.120 | 82.07/83.16 3.231/3.274 |
| 22 | 83.21 3.276 | 86.03/87.12 3.387/3.430 |
| 23 | 87.17 3.432 | 89.94/91.08 3.541/3.586 |
| 24 | 91.14 3.588 | 93.85/95.00 3.695/3.740 |

PCB LAYOUT: COMPONENT SIDE
RECOMMENDED PCB THICKNESS:
1.57 ± .18 / .062 ± .007

| | | | | | | | | | |
|---|-------------------------------|---|-----------------------|--------------------------|----------------------|--------------------|------------------------------|------------------------|--|
| ADD P/N TO SHT 8 EC NO: UCP2008-3117 DRWN: GAVRILL 2008/06/25 CHKD: AELHAG 2008/07/01 APPR: FSM TH 2008/07/01 | QUALITY SYMBOLS ▽=0 ◻=0 | GENERAL TOLERANCES (UNLESS SPECIFIED) | | DIMENSION STYLE MM/IN | | SCALE 1.5:1 | DESIGN UNITS INCH | THIRD ANGLE PROJECTION | |
| | | 4 PLACES ± --- ± --- | 3 PLACES ± --- ± .010 | 2 PLACES ± 0.25 ± .015 | 1 PLACE ± 0.38 ± --- | ANGULAR ± 1/2° | DRAWN BY JSCHAFFER | DATE 2004/04/05 | TITLE KK 156 HEADER ASSEMBLY FRICTION LOCK STRAIGHT BREAKAWAY |
| DRAFT WHERE APPLICABLE MUST REMAIN WITHIN DIMENSIONS | | MATERIAL NO. SEE CHART | | APPROVED BY MARGULIS | | DATE 2004/04/05 | DOCUMENT NO. SD-41671-001 | | SHEET NO. 1 OF 7 |
| 2-* 1 | AH8 | THIS DRAWING CONTAINS INFORMATION THAT IS PROPRIETARY TO MOLEX INCORPORATED AND SHOULD NOT BE USED WITHOUT WRITTEN PERMISSION | | | | | | | |

| Ckts | Material No | Engineer Number | Material No | Engineer Number | Material No | Engineer Number |
|------|-------------------------|-----------------|-----------------------------|-----------------|-----------------------------|-----------------|
| 2 | 26-48-1025 | A-41671-A02A102 | 41671-0001 | A-41671-C02A208 | 41671-0024 | A-41671-C02A228 |
| 3 | 26-48-1035 | A-41671-A03A102 | 41671-0002 | A-41671-C03A208 | 41671-0025 | A-41671-C03A228 |
| 4 | 26-48-1045 | A-41671-A04A102 | 41671-0003 | A-41671-C04A208 | 41671-0026 | A-41671-C04A228 |
| 5 | 26-48-1055 | A-41671-A05A102 | 41671-0004 | A-41671-C05A208 | 41671-0027 | A-41671-C05A228 |
| 6 | 26-48-1065 | A-41671-A06A102 | 41671-0005 | A-41671-C06A208 | 41671-0028 | A-41671-C06A228 |
| 7 | 26-48-1075 | A-41671-A07A102 | 41671-0006 | A-41671-C07A208 | 41671-0029 | A-41671-C07A228 |
| 8 | 26-48-1085 | A-41671-A08A102 | 41671-0007 | A-41671-C08A208 | 41671-0030 | A-41671-C08A228 |
| 9 | 26-48-1095 | A-41671-A09A102 | 41671-0008 | A-41671-C09A208 | 41671-0031 | A-41671-C09A228 |
| 10 | 26-48-1105 | A-41671-A10A102 | 41671-0009 | A-41671-C10A208 | 41671-0032 | A-41671-C10A228 |
| 11 | 26-48-1115 | A-41671-A11A102 | 41671-0010 | A-41671-C11A208 | 41671-0033 | A-41671-C11A228 |
| 12 | 26-48-1125 | A-41671-A12A102 | 41671-0011 | A-41671-C12A208 | 41671-0034 | A-41671-C12A228 |
| 13 | 26-48-1135 | A-41671-A13A102 | 41671-0012 | A-41671-C13A208 | 41671-0035 | A-41671-C13A228 |
| 14 | 26-48-1145 | A-41671-A14A102 | 41671-0013 | A-41671-C14A208 | 41671-0036 | A-41671-C14A228 |
| 15 | 26-48-1155 | A-41671-A15A102 | 41671-0014 | A-41671-C15A208 | 41671-0037 | A-41671-C15A228 |
| 16 | 26-48-1165 | A-41671-A16A102 | 41671-0015 | A-41671-C16A208 | 41671-0038 | A-41671-C16A228 |
| 17 | 26-48-1175 | A-41671-A17A102 | 41671-0016 | A-41671-C17A208 | 41671-0039 | A-41671-C17A228 |
| 18 | 26-48-1185 | A-41671-A18A102 | 41671-0017 | A-41671-C18A208 | 41671-0040 | A-41671-C18A228 |
| 19 | 26-48-1195 | A-41671-A19A102 | 41671-0018 | A-41671-C19A208 | 41671-0041 | A-41671-C19A228 |
| 20 | 26-48-1205 | A-41671-A20A102 | 41671-0019 | A-41671-C20A208 | 41671-0042 | A-41671-C20A228 |
| 21 | 26-48-1215 | A-41671-A21A102 | 41671-0020 | A-41671-C21A208 | 41671-0043 | A-41671-C21A228 |
| 22 | 26-48-1225 | A-41671-A22A102 | 41671-0021 | A-41671-C22A208 | 41671-0044 | A-41671-C22A228 |
| 23 | 26-48-1235 | A-41671-A23A102 | 41671-0022 | A-41671-C23A208 | 41671-0045 | A-41671-C23A228 |
| 24 | 26-48-1245 | A-41671-A24A102 | 41671-0023 | A-41671-C24A208 | 41671-0046 | A-41671-C24A228 |
| | STD TIN CATALOG PRODUCT | | STD 15 GOLD CATALOG PRODUCT | | STD 30 GOLD CATALOG PRODUCT | |

| | | | |
|--|---|--|-------------------------------------|
| REV: AH8 | ECR/ECN INFORMATION: EC. NO. UCP2008-3117 DATE: 7/1/2008 | TITLE: KK .156 HEADER ASSEMBLY FRICITION LOCK STRAIGHT 2-24 CKTS. | SHEET No. - 2 - |
| DOCUMENT NUMBER: SD - 41671 - 001 | | CREATED / REVISED BY: GAVERILL | CHECKED BY: AELHAG |
| | | APPROVED BY: FSMITH | |

| | |
|--------------|----------------|
| Group No: | A-41671-ANA501 |
| Pin No: | 2161-1 (501) |
| Plating: | 501 GOLD |
| Pin Length L | .750 / 19.05 |
| Mating M | .450 / 11.43 |
| Gold Loc G | OVERALL |
| PC Tail P | .172 / 4.37 |
| Tin Loc T | NA |
| Voided Ckts | NONE |
| Pack Per | PK-41671-001 |

| | |
|--------------|----------------|
| Group No: | A-41671-ANA503 |
| Pin No: | 2161 – 1(503) |
| Plating: | 503 GOLD |
| Pin Length L | .750 / 19.05 |
| Mating M | .450 / 11.43 |
| Gold Loc G | OVERALL |
| PC Tail P | .172 / 4.37 |
| Tin Loc T | NA |
| Voided Ckts | NONE |
| Pack Per | PK-41671-001 |

| | |
|--------------|----------------|
| Group No: | A-41671-AND102 |
| Pin No: | 2161-56 (102) |
| Plating: | 102 TIN |
| Pin Length L | .703 / 17.86 |
| Mating M | .450 / 11.43 |
| Gold Loc G | NA |
| PC Tail P | .125 / 3.18 |
| Tin Loc T | OVERALL |
| Voided Ckts | NONE |
| Pack Per | PK-41671-001 |

| | |
|--------------|----------------|
| Group No: | A-41671-ANB102 |
| Pin No: | 2161-1 (102) |
| Plating: | 102 TIN |
| Pin Length L | .750 / 19.05 |
| Mating M | .523 / 13.28 |
| Gold Loc G | NA |
| PC Tail P | .099 / 2.51 |
| Tin Loc T | OVERALL |
| Voided Ckts | NONE |
| Pack Per | PK-41671-001 |

| Ckts | Material No | Engineer Number |
|------|-------------|-----------------|
| 2 | 26-48-2025 | A-41671-A02A501 |
| 3 | 26-48-2035 | A-41671-A03A501 |
| 4 | 26-48-2045 | A-41671-A04A501 |
| 5 | 26-48-2055 | A-41671-A05A501 |
| 6 | 26-48-2065 | A-41671-A06A501 |
| 7 | 26-48-2075 | A-41671-A07A501 |
| 8 | 26-48-2085 | A-41671-A08A501 |
| 9 | 26-48-2095 | A-41671-A09A501 |
| 10 | 26-48-2105 | A-41671-A10A501 |
| 11 | 26-48-2115 | A-41671-A11A501 |
| 12 | 26-48-2125 | A-41671-A12A501 |
| 13 | 26-48-2135 | A-41671-A13A501 |
| 14 | 26-48-2145 | A-41671-A14A501 |
| 15 | 26-48-2155 | A-41671-A15A501 |
| 16 | 26-48-2165 | A-41671-A16A501 |
| 17 | 26-48-2175 | A-41671-A17A501 |
| 18 | 26-48-2185 | A-41671-A18A501 |
| 19 | 26-48-2195 | A-41671-A19A501 |
| 20 | 26-48-2205 | A-41671-A20A501 |
| 21 | 26-48-2215 | A-41671-A21A501 |
| 22 | 26-48-2225 | A-41671-A22A501 |
| 23 | 26-48-2235 | A-41671-A23A501 |
| 24 | 26-48-2245 | A-41671-A24A501 |

| Material No | Engineer Number |
|-------------|-----------------|
| 26-48-9026 | A-41671-A02A503 |
| 41671-0047 | A-41671-A03A503 |
| 41671-0048 | A-41671-A04A503 |
| 26-48-9056 | A-41671-A05A503 |
| 41671-0049 | A-41671-A06A503 |
| 41671-0050 | A-41671-A07A503 |
| 41671-0051 | A-41671-A08A503 |
| 26-48-9096 | A-41671-A09A503 |
| 26-48-9106 | A-41671-A10A503 |
| 41671-0052 | A-41671-A11A503 |
| 26-48-9126 | A-41671-A12A503 |
| 41671-0053 | A-41671-A13A503 |
| 41671-0054 | A-41671-A14A503 |
| 41671-0055 | A-41671-A15A503 |
| 41671-0056 | A-41671-A16A503 |
| 41671-0057 | A-41671-A17A503 |
| 41671-0058 | A-41671-A18A503 |
| 41671-0059 | A-41671-A19A503 |
| 41671-0060 | A-41671-A20A503 |
| 41671-0061 | A-41671-A21A503 |
| 41671-0062 | A-41671-A22A503 |
| 41671-0063 | A-41671-A23A503 |
| 26-48-9246 | A-41671-A24A503 |

| Material No | Engineer Number |
|-------------|-----------------|
| 26-48-9023 | A-41671-A02D102 |
| 26-48-9033 | A-41671-A03D102 |
| 26-48-9043 | A-41671-A04D102 |
| 26-48-9053 | A-41671-A05D102 |
| 26-48-9063 | A-41671-A06D102 |
| 26-48-9073 | A-41671-A07D102 |
| 26-48-9083 | A-41671-A08D102 |
| 26-48-9093 | A-41671-A09D102 |
| 26-48-9103 | A-41671-A10D102 |
| 26-48-9113 | A-41671-A11D102 |
| 26-48-9123 | A-41671-A12D102 |
| 26-48-9133 | A-41671-A13D102 |
| 26-48-9143 | A-41671-A14D102 |
| 26-48-9153 | A-41671-A15D102 |
| 26-48-9163 | A-41671-A16D102 |
| 26-48-9173 | A-41671-A17D102 |
| 26-48-9183 | A-41671-A18D102 |
| 26-48-9193 | A-41671-A19D102 |
| 26-48-9203 | A-41671-A20D102 |
| 26-48-9213 | A-41671-A21D102 |
| 26-48-9223 | A-41671-A22D102 |
| 26-48-9233 | A-41671-A23D102 |
| 26-48-9243 | A-41671-A24D102 |

| Material No | Engineer Number |
|-------------|-----------------|
| 41671-0064 | A-41671-A02B102 |
| 41671-0065 | A-41671-A03B102 |
| 41671-0066 | A-41671-A04B102 |
| 41671-0067 | A-41671-A05B102 |
| 41671-0068 | A-41671-A06B102 |
| 41671-0069 | A-41671-A07B102 |
| 41671-0070 | A-41671-A08B102 |
| 26-48-6095 | A-41671-A09B102 |
| 41671-0071 | A-41671-A10B102 |
| 41671-0072 | A-41671-A11B102 |
| 41671-0073 | A-41671-A12B102 |
| 41671-0074 | A-41671-A13B102 |
| 41671-0075 | A-41671-A14B102 |
| 41671-0076 | A-41671-A15B102 |
| 41671-0077 | A-41671-A16B102 |
| 41671-0078 | A-41671-A17B102 |
| 41671-0079 | A-41671-A18B102 |
| 41671-0080 | A-41671-A19B102 |
| 41671-0081 | A-41671-A20B102 |
| 41671-0082 | A-41671-A21B102 |
| 41671-0083 | A-41671-A22B102 |
| 41671-0084 | A-41671-A23B102 |
| 26-48-6245 | A-41671-A24B102 |

| | | | |
|--|---|---|-------------------------------------|
| <u>REV:</u> AH8 | <u>ECR/ECN INFORMATION:</u> EC. NO. UCP2008-3117 DATE: 7/1/2008 | <u>TITLE:</u> KK .156 HEADER ASSEMBLY FRICTION LOCK STRAIGHT 2-24 CKTS. | <u>SHEET No.</u> - 3 - |
| <u>DOCUMENT NUMBER:</u> SD – 41671 - 001 | | <u>CREATED / REVISED BY:</u> GAVERILL | <u>CHECKED BY:</u> AELHAG |
| | | <u>APPROVED BY:</u> FSMITH | |

| | |
|--------------|----------------|
| Group No: | A-41671-ANF102 |
| Pin No: | 2161-24 (102) |
| Plating: | 102 TIN |
| Pin Length L | .800 / 20.32 |
| Mating M | .480 / 12.19 |
| Gold Loc G | NA |
| PC Tail P | .192 / 4.88 |
| Tin Loc T | OVERALL |
| Voided Ckts | NONE |
| Pack Per | PK-41671-001 |

| | |
|--------------|----------------|
| Group No: | A-41671-ANB501 |
| Pin No: | 2161-1 (501) |
| Plating: | 501 GOLD |
| Pin Length L | .750 / 19.05 |
| Mating M | .523 / 13.28 |
| Gold Loc G | OVERALL |
| PC Tail P | .099 / 2.51 |
| Tin Loc T | NA |
| Voided Ckts | NONE |
| Pack Per | PK-41671-001 |

| | |
|--------------|----------------|
| Group No: | A-41671-ANF501 |
| Pin No: | 2161-24 (501) |
| Plating: | 501 GOLD |
| Pin Length L | .800 / 20.32 |
| Mating M | .480 / 12.19 |
| Gold Loc G | OVERALL |
| PC Tail P | .192 / 4.88 |
| Tin Loc T | NA |
| Voided Ckts | NONE |
| Pack Per | PK-41671-001 |

| | |
|--------------|----------------|
| Group No: | A-41671-ANN102 |
| Pin No: | 2161-19 (102) |
| Plating: | 102 TIN |
| Pin Length L | 1.032 / 26.21 |
| Mating M | .450 / 11.43 |
| Gold Loc G | NA |
| PC Tail P | .454 / 11.53 |
| Tin Loc T | OVERALL |
| Voided Ckts | NONE |
| Pack Per | PK-41671-001 |

| Ckts | Material No | Engineer Number |
|------|-------------|-----------------|
| 2 | 26-48-4026 | A-41671-A02F102 |
| 3 | 26-48-4036 | A-41671-A03F102 |
| 4 | 26-48-4046 | A-41671-A04F102 |
| 5 | 26-48-4056 | A-41671-A05F102 |
| 6 | 26-48-4066 | A-41671-A06F102 |
| 7 | 26-48-4076 | A-41671-A07F102 |
| 8 | 26-48-4086 | A-41671-A08F102 |
| 9 | 26-48-4096 | A-41671-A09F102 |
| 10 | 26-48-4106 | A-41671-A10F102 |
| 11 | 26-48-4116 | A-41671-A11F102 |
| 12 | 26-48-4126 | A-41671-A12F102 |
| 13 | 26-48-4136 | A-41671-A13F102 |
| 14 | 26-48-4146 | A-41671-A14F102 |
| 15 | 26-48-4156 | A-41671-A15F102 |
| 16 | 26-48-4166 | A-41671-A16F102 |
| 17 | 26-48-4176 | A-41671-A17F102 |
| 18 | 26-48-4186 | A-41671-A18F102 |
| 19 | 26-48-4196 | A-41671-A19F102 |
| 20 | 26-48-4206 | A-41671-A20F102 |
| 21 | 26-48-4216 | A-41671-A21F102 |
| 22 | 26-48-4226 | A-41671-A22F102 |
| 23 | 26-48-4236 | A-41671-A23F102 |
| 24 | 26-48-4246 | A-41671-A24F102 |

| Material No | Engineer Number |
|-------------|-----------------|
| 26-48-2027 | A-41671-A02B501 |
| 26-48-2037 | A-41671-A03B501 |
| 26-48-2047 | A-41671-A04B501 |
| 26-48-2057 | A-41671-A05B501 |
| 26-48-2067 | A-41671-A06B501 |
| 26-48-2077 | A-41671-A07B501 |
| 26-48-2087 | A-41671-A08B501 |
| 26-48-2097 | A-41671-A09B501 |
| 26-48-2107 | A-41671-A10B501 |
| 26-48-2117 | A-41671-A11B501 |
| 26-48-2127 | A-41671-A12B501 |
| 26-48-2137 | A-41671-A13B501 |
| 26-48-2147 | A-41671-A14B501 |
| 26-48-2157 | A-41671-A15B501 |
| 26-48-2167 | A-41671-A16B501 |
| 26-48-2177 | A-41671-A17B501 |
| 26-48-2187 | A-41671-A18B501 |
| 26-48-2197 | A-41671-A19B501 |
| 26-48-2207 | A-41671-A20B501 |
| 26-48-2217 | A-41671-A21B501 |
| 26-48-2227 | A-41671-A22B501 |
| 26-48-2237 | A-41671-A23B501 |
| 26-48-2247 | A-41671-A24B501 |

| Material No | Engineer Number |
|-------------|-----------------|
| 41671-0250 | A-41671-A02F501 |
| 41671-0350 | A-41671-A03F501 |
| 41671-0450 | A-41671-A04F501 |
| 41671-0550 | A-41671-A05F501 |
| 41671-0650 | A-41671-A06F501 |
| 41671-0750 | A-41671-A07F501 |
| 41671-0850 | A-41671-A08F501 |
| 41671-0950 | A-41671-A09F501 |
| 41671-1050 | A-41671-A10F501 |
| 41671-1150 | A-41671-A11F501 |
| 41671-1250 | A-41671-A12F501 |
| 41671-1350 | A-41671-A13F501 |
| 41671-1450 | A-41671-A14F501 |
| 41671-1550 | A-41671-A15F501 |
| 41671-1650 | A-41671-A16F501 |
| 41671-1750 | A-41671-A17F501 |
| 41671-1850 | A-41671-A18F501 |
| 41671-1950 | A-41671-A19F501 |
| 41671-2050 | A-41671-A20F501 |
| 41671-2150 | A-41671-A21F501 |
| 41671-2250 | A-41671-A22F501 |
| 41671-2350 | A-41671-A23F501 |
| 41671-2450 | A-41671-A24F501 |

| Material No | Engineer Number |
|-------------|-----------------|
| | A-41671-A02N102 |
| | A-41671-A03N102 |
| | A-41671-A04N102 |
| | A-41671-A05N102 |
| | A-41671-A06N102 |
| | A-41671-A07N102 |
| | A-41671-A08N102 |
| | A-41671-A09N102 |
| | A-41671-A10N102 |
| | A-41671-A11N102 |
| | A-41671-A12N102 |
| | A-41671-A13N102 |
| | A-41671-A14N102 |
| | A-41671-A15N102 |
| | A-41671-A16N102 |
| | A-41671-A17N102 |
| | A-41671-A18N102 |
| | A-41671-A19N102 |
| | A-41671-A20N102 |
| | A-41671-A21N102 |
| | A-41671-A22N102 |
| | A-41671-A23N102 |
| 26-48-8247 | A-41671-A24N102 |

| | | | |
|--|---|--|-------------------------------------|
| <u>REV:</u> AH8 | <u>ECR/ECN INFORMATION:</u> EC. NO. UCP2008-3117 DATE: 7/1/2008 | <u>TITLE:</u> KK .156 HEADER ASSEMBLY FRICTION LOCK STRAIGHT 2-24 CKTS. | <u>SHEET No.</u> - 4 - |
| <u>DOCUMENT NUMBER:</u> SD - 41671 - 001 | | <u>CREATED / REVISED BY:</u> GAVERILL | <u>CHECKED BY:</u> AELHAG |
| | | <u>APPROVED BY:</u> FSMITH | |

| | |
|--------------|----------------|
| Group No: | A-41671-CNP228 |
| Pin No: | 43294-0282 |
| Plating: | 228 30 GOLD |
| Pin Length L | .800 / 20.32 |
| Mating M | .523 / 13.28 |
| Gold Loc G | .350 / 8.89 |
| PC Tail P | .149 / 3.78 |
| Tin Loc T | .200 / 5.08 |
| Voided Ckts | NONE |
| Pack Per | PK-41671-001 |

| | |
|--------------|----------------|
| Group No: | A-41671-CNR208 |
| Pin No: | 43294-0344 |
| Plating: | 208 15 GOLD |
| Pin Length L | .870 / 22.10 |
| Mating M | .450 / 11.43 |
| Gold Loc G | .400 / 10.16 |
| PC Tail P | .292 / 7.42 |
| Tin Loc T | .200 / 5.08 |
| Voided Ckts | NONE |
| Pack Per | PK-41671-001 |

| | |
|--------------|----------------|
| Group No: | A-41671-ANT102 |
| Pin No: | 2161-37 (102) |
| Plating: | 102 TIN |
| Pin Length L | 1.100 / 27.94 |
| Mating M | .486 / 12.34 |
| Gold Loc G | NA |
| PC Tail P | .486 / 12.34 |
| Tin Loc T | OVERALL |
| Voided Ckts | NONE |
| Pack Per | PK-41671-001 |

| | |
|--------------|----------------|
| Group No: | A-41671-ANA122 |
| Pin No: | 2161-1 (122) |
| Plating: | 122 TIN |
| Pin Length L | .750 / 19.05 |
| Mating M | .450 / 11.43 |
| Gold Loc G | NA |
| PC Tail P | .172 / 4.37 |
| Tin Loc T | OVERALL |
| Voided Ckts | NONE |
| Pack Per | PK-41671-001 |

| Ckts | Material No | Engineer Number |
|------|-------------|-----------------|
| 2 | 41671-2451 | A-41671-C02P228 |
| 3 | 41671-2452 | A-41671-C03P228 |
| 4 | 41671-2453 | A-41671-C04P228 |
| 5 | 41671-2454 | A-41671-C05P228 |
| 6 | 41671-2455 | A-41671-C06P228 |
| 7 | 41671-2456 | A-41671-C07P228 |
| 8 | 41671-2457 | A-41671-C08P228 |
| 9 | 41671-2458 | A-41671-C09P228 |
| 10 | 41671-2459 | A-41671-C10P228 |
| 11 | 41671-2460 | A-41671-C11P228 |
| 12 | 41671-2461 | A-41671-C12P228 |
| 13 | 41671-2462 | A-41671-C13P228 |
| 14 | 41671-2463 | A-41671-C14P228 |
| 15 | 41671-2464 | A-41671-C15P228 |
| 16 | 41671-2465 | A-41671-C16P228 |
| 17 | 41671-2466 | A-41671-C17P228 |
| 18 | 41671-2467 | A-41671-C18P228 |
| 19 | 41671-2468 | A-41671-C19P228 |
| 20 | 41671-2469 | A-41671-C20P228 |
| 21 | 41671-2470 | A-41671-C21P228 |
| 22 | 41671-2471 | A-41671-C22P228 |
| 23 | 41671-2472 | A-41671-C23P228 |
| 24 | 41671-2473 | A-41671-C24P228 |

| Material No | Engineer Number |
|-------------|-----------------|
| 41671-2474 | A-41671-C02R208 |
| 41671-2475 | A-41671-C03R208 |
| 41671-2476 | A-41671-C04R208 |
| 41671-2477 | A-41671-C05R208 |
| 41671-2478 | A-41671-C06R208 |
| 41671-2479 | A-41671-C07R208 |
| 41671-2480 | A-41671-C08R208 |
| 41671-2481 | A-41671-C09R208 |
| 41671-2482 | A-41671-C10R208 |
| 41671-2483 | A-41671-C11R208 |
| 41671-2484 | A-41671-C12R208 |
| 41671-2485 | A-41671-C13R208 |
| 41671-2486 | A-41671-C14R208 |
| 41671-2487 | A-41671-C15R208 |
| 41671-2488 | A-41671-C16R208 |
| 41671-2489 | A-41671-C17R208 |
| 41671-2490 | A-41671-C18R208 |
| 41671-2491 | A-41671-C19R208 |
| 41671-2492 | A-41671-C20R208 |
| 41671-2493 | A-41671-C21R208 |
| 41671-2494 | A-41671-C22R208 |
| 41671-2495 | A-41671-C23R208 |
| 41671-2496 | A-41671-C24R208 |

| Material No | Engineer Number |
|-------------|-----------------|
| 41671-3400 | A-41671-A02T102 |
| 41671-3401 | A-41671-A03T102 |
| 41671-3402 | A-41671-A04T102 |
| 41671-3403 | A-41671-A05T102 |
| 41671-3404 | A-41671-A06T102 |
| 41671-3405 | A-41671-A07T102 |
| 41671-3406 | A-41671-A08T102 |
| 41671-3407 | A-41671-A09T102 |
| 41671-3408 | A-41671-A10T102 |
| 41671-3409 | A-41671-A11T102 |
| 41671-3410 | A-41671-A12T102 |
| 41671-3411 | A-41671-A13T102 |
| 41671-3412 | A-41671-A14T102 |
| 41671-3413 | A-41671-A15T102 |
| 41671-3414 | A-41671-A16T102 |
| 41671-3415 | A-41671-A17T102 |
| 41671-3416 | A-41671-A18T102 |
| 41671-3417 | A-41671-A19T102 |
| 41671-3418 | A-41671-A20T102 |
| 41671-3419 | A-41671-A21T102 |
| 41671-3420 | A-41671-A22T102 |
| 41671-3421 | A-41671-A23T102 |
| 41671-3422 | A-41671-A24T102 |

| Material No | Engineer Number |
|-------------|-----------------|
| 41671-3423 | A-41671-A02A122 |
| 41671-3424 | A-41671-A03A122 |
| 41671-3425 | A-41671-A04A122 |
| 41671-3426 | A-41671-A05A122 |
| 41671-3427 | A-41671-A06A122 |
| 41671-3428 | A-41671-A07A122 |
| 41671-3429 | A-41671-A08A122 |
| 41671-3430 | A-41671-A09A122 |
| 41671-3431 | A-41671-A10A122 |
| 41671-3432 | A-41671-A11A122 |
| 41671-3433 | A-41671-A12A122 |
| 41671-3434 | A-41671-A13A122 |
| 41671-3435 | A-41671-A14A122 |
| 41671-3436 | A-41671-A15A122 |
| 41671-3437 | A-41671-A16A122 |
| 41671-3438 | A-41671-A17A122 |
| 41671-3439 | A-41671-A18A122 |
| 41671-3440 | A-41671-A19A122 |
| 41671-3441 | A-41671-A20A122 |
| 41671-3442 | A-41671-A21A122 |
| 41671-3443 | A-41671-A22A122 |
| 41671-3444 | A-41671-A23A122 |
| 41671-3445 | A-41671-A24A122 |

| | | | |
|--|---|---|-------------------------------------|
| <u>REV:</u> AH8 | <u>ECR/ECN INFORMATION:</u> EC. NO. UCP2008-3117 DATE: 7/1/2008 | <u>TITLE:</u> KK .156 HEADER ASSEMBLY FRICTION LOCK STRAIGHT 2-24 CKTS. | <u>SHEET No.</u> - 5 - |
| <u>DOCUMENT NUMBER:</u> SD - 41671 - 001 | | <u>CREATED / REVISED BY:</u> GAVERILL | <u>CHECKED BY:</u> AELHAG |
| | | <u>APPROVED BY:</u> FSMITH | |

| | | | | | | | | |
|--------------|--------------------------------|-----------|--------------|--------------------------------|-----------|--------------|--------------------------------|------------------------|
| Group No: | A-41671-ANA102-* REF SEE SHT 1 | | Group No: | A-41671-ANA102-* REF SEE SHT 1 | | Group No: | A-41671-ANA102-* REF SEE SHT 1 | |
| Pin No: | | | Pin No: | | | Pin No: | | |
| Plating: | | | Plating: | | | Plating: | | |
| Pin Length L | | | Pin Length L | | | Pin Length L | | |
| Mating M | | | Mating M | | | Mating M | | |
| Gold Loc G | | | Gold Loc G | | | Gold Loc G | | |
| PC Tail P | | | PC Tail P | | | PC Tail P | | |
| Tin Loc T | | | Tin Loc T | | | Tin Loc T | | |
| Voided Ckts | SEE CHART BELOW | | Voided Ckts | SEE CHART BELOW | | Voided Ckts | SEE CHART BELOW | |
| Pack Per | | | Pack Per | | | Pack Per | | |
| Material No | Engineer Number | Void Ckts | Material No | Engineer Number | Void Ckts | Material No | Engineer Number | Void Ckts |
| 26-50-3030 | A-41671-A03A102-2 | 2 | 26-50-3073 | A-41671-A07A102-3 | 3 | 26-50-3202 | A-41671-A20A102-51 | 2,4,6,8 10,12,14,16 |
| 26-50-3040 | A-41671-A04A102-2 | 2 | 26-50-5080 | A-41671-A08A102-51 | 2,4 | 26-50-3167 | A-41671-A16A102-53 | 2,4,6,8 |
| 26-50-3050 | A-41671-A05A102-2 | 2 | 26-50-3063 | A-41671-A06A102-3 | 3 | 26-50-3152 | A-41671-A15A102-52 | 4,6,8,10,12,14 |
| 26-50-3060 | A-41671-A06A102-2 | 2 | 26-50-3071 | A-41671-A07A102-52 | 2,4,6 | 26-50-3126 | A-41671-A12A102-53 | 2,3,5,6,8,10 |
| 26-50-3070 | A-41671-A07A102-2 | 2 | 26-50-3051 | A-41671-A05A102-51 | 2,4 | 26-50-3240 | A-41671-A24A102-2 | 2 |
| 26-50-3080 | A-41671-A08A102-2 | 2 | 26-50-3062 | A-41671-A06A102-4 | 4 | 26-50-5090 | A-41671-A10A102-55 | 2,5 |
| 26-50-3090 | A-41671-A09A102-2 | 2 | 26-50-3068 | A-41671-A06A102-6 | 6 | 41671-3100 | A-41671-A05A102-3 | 3 |
| 26-50-3100 | A-41671-A10A102-2 | 2 | 26-50-3111 | A-41671-A11A102-51 | 5,10 | 41671-3112 | A-41671-A14A102-12 | 12 |
| 26-50-3110 | A-41671-A11A102-2 | 2 | 26-50-3065 | A-41671-A06A102-5 | 5 | 41671-3113 | A-41671-A14A102-51 | 11, 12 |
| 26-50-3120 | A-41671-A12A102-2 | 2 | 26-50-3054 | A-41671-A05A102-4 | 4 | 41671-3446 | A-41671-A06A102-55 | 1, 3, 5 |
| 26-50-3130 | A-41671-A13A102-2 | 2 | 26-50-3154 | A-41671-A15A102-4 | 4 | | | |
| 26-50-3140 | A-41671-A14A102-2 | 2 | 26-50-3145 | A-41671-A14A102-55 | 2,4,8,12 | | | |
| 26-50-3150 | A-41671-A15A102-2 | 2 | 26-50-3155 | A-41671-A15A102-54 | 3,10,13 | | | |
| 26-50-3160 | A-41671-A16A102-2 | 2 | 26-50-3066 | A-41671-A6A102-54 | 2,4 | | | |
| 26-50-3170 | A-41671-A17A102-2 | 2 | 26-50-3108 | A-41671-A10A102-53 | 3,10 | | | |
| 26-50-3180 | A-41671-A18A102-2 | 2 | 26-50-3103 | A-41671-A10A102-7 | 7 | | | |
| 26-50-3190 | A-41671-A19A102-2 | 2 | 26-50-3087 | A-41671-A8A102-52 | 5,7 | | | |
| 26-50-3200 | A-41671-A20A102-2 | 2 | 26-50-5081 | A-41671-A08A102-6 | 6 | | | |
| 26-50-3210 | A-41671-A21A102-2 | 2 | 26-50-3132 | A-41671-A13A102-5 | 5 | | | |
| 26-50-3220 | A-41671-A22A102-2 | 2 | 26-50-3165 | A-41671-A16A102-52 | 2,15 | | | |
| 26-50-3230 | A-41671-A23A102-2 | 2 | 41671-0085 | A-41671-A10A102-56 | 5,8 | | | |

| | | | |
|--|---|---|--------------------------------------|
| <u>REV:</u> AH8 | <u>ECR/ECN INFORMATION:</u> EC. NO. UCP2008-3117 DATE: 7/1/2008 | <u>TITLE:</u> KK .156 HEADER ASSEMBLY FRICTION LOCK STRAIGHT 2-24 CKTS. | <u>SHEET No.</u> - 6 - |
| <u>DOCUMENT NUMBER:</u> SD - 41671 - 001 | <u>CREATED / REVISED BY:</u> GAVERRILL | <u>CHECKED BY:</u> AELHAG | <u>APPROVED BY:</u> FSMITH |

| | | | | | | | | |
|--------------|--------------------------------|-----------|--------------|--------------------------------|-----------|--------------|---|------------------------|
| Group No: | A-41671-ANA503-* REF SEE SHT 3 | | Group No: | A-41671-AND102-* REF SEE SHT 3 | | Group No: | A-41671-ANB122-* | |
| Pin No: | | | Pin No: | | | Pin No: | 2161-1 (122) | |
| Plating: | | | Plating: | | | Plating: | 122 TIN | |
| Pin Length L | | | Pin Length L | | | Pin Length L | .750 / 19.05 | |
| Mating M | | | Mating M | | | Mating M | <u>.517 +/- .020</u> 13.13 +/- 0.51 | |
| Gold Loc G | | | Gold Loc G | | | Gold Loc G | NA | |
| PC Tail P | | | PC Tail P | | | PC Tail P | <u>.105 +/- .020</u> 2.67 +/- 0.51 | |
| Tin Loc T | | | Tin Loc T | | | Tin Loc T | OVERALL | |
| Voided Ckts | SEE CHART BELOW | | Voided Ckts | SEE CHART BELOW | | Voided Ckts | SEE CHART BELOW | |
| Pack Per | | | Pack Per | | | Pack Per | PK-41671-001 | |
| Material No | Engineer Number | Void Ckts | Material No | Engineer Number | Void Ckts | Material No | Engineer Number | Void Ckts |
| 26-49-7054 | A-41671-A5A503-2 | 2 | 26-49-6110 | A-41671-A11D102-8 | 8 | 50-36-1877 | A-41671-A16B122-51 | 2,5,7,9,10,11 13,14 |
| | | | | | | | | |
| | | | | | | | | |
| | | | | | | | | |
| | | | | | | | | |
| | | | | | | | | |
| | | | | | | | | |
| | | | | | | | | |
| | | | | | | | | |
| | | | | | | | | |
| | | | | | | | | |
| | | | | | | | | |
| | | | | | | | | |
| | | | | | | | | |
| | | | | | | | | |
| | | | | | | | | |
| | | | | | | | | |
| | | | | | | | | |
| | | | | | | | | |

| | | | |
|--|--|--|--------------------------------------|
| <u>REV:</u> AH8 | <u>ECR/ECN INFORMATION:</u> EC. NO. UCP2008-3117 DATE: 7/1/2008 | <u>TITLE:</u> KK .156 HEADER ASSEMBLY FRICTION LOCK STRAIGHT 2-24 CKTS. | <u>SHEET No.</u> - 7 - |
| <u>DOCUMENT NUMBER:</u> SD – 41671 - 001 | <u>CREATED / REVISED BY:</u> GAVERRILL | <u>CHECKED BY:</u> AELHAG | <u>APPROVED BY:</u> FSMITH |

| | | |
|--------------|----------------|-----------------|
| Group No: | A-41671-ANA224 | |
| Pin No: | 2161-1(224) | |
| Plating: | 224 Tin | |
| Pin Length L | .750/19.05 | |
| Mating M | .450/11.43 | |
| Gold Loc G | N/A | |
| PC Tail P | .172/4.37 | |
| Tin Loc T | OVERALL | |
| Voided Ckts | NONE | |
| Pack Per | PK-41671-001 | |
| Ckts | Material No | Engineer Number |
| 5 | 50-36-2287 | A-41671-A05A224 |
| | | |
| | | |
| | | |
| | | |
| | | |
| | | |
| | | |
| | | |
| | | |
| | | |
| | | |
| | | |
| | | |
| | | |
| | | |
| | | |

| | | | |
|--|---|---|--------------------------------------|
| <u>REV:</u> AH8 | <u>ECR/ECN INFORMATION:</u> EC. NO. UCP2008-3117 DATE: 7/1/2008 | <u>TITLE:</u> KK .156 HEADER ASSEMBLY FRICTION LOCK STRAIGHT 2-24 CKTS. | <u>SHEET No.</u> - 8 - |
| <u>DOCUMENT NUMBER:</u> SD – 41671 - 001 | | <u>CREATED / REVISED BY:</u> GAVERILL | <u>CHECKED BY:</u> AELHAG |
| | | <u>APPROVED BY:</u> FSMITH | |