



FlukeView Forms Software



Expand the power of the world's most rugged, accurate handheld test tools with FlukeView® Forms Documenting Software.

To address the increasing demands for reporting and documentation, Fluke presents FlukeView Forms documenting software. FlukeView Forms increases the power of your Fluke tool by enabling you to document, store and analyze individual readings or series of measurements, then convert them into professional-looking documents.

Several versions of the product are available, depending upon the type of cable needed to download data from your instrument and depending upon the data reporting capability you need. FlukeView Forms offers two levels of capability: FlukeView Forms Basic, and FlukeView Forms plus Designer. FlukeView Forms Basic can be used alone to download measurement data and create reports that can be saved and printed. FlukeView Forms plus Designer allows a user to edit an existing form or create a new form to customize the report to individual needs. A common edit might add a company logo and title. See the [Features] tab on this page for more information.

Capability Comparison

Capabilities	FlukeView® Forms Basic	FlukeView® Forms plus Designer
Transfer data points from your meter to your PC	X	X
Number of standard forms	2	9
Able to modify standard forms	No	Yes
Includes FlukeView® Forms Designer for customizing forms	No	Yes
Number of multiple meters whose data can be viewed simultaneously	1	8
Number of concurrently running instances of FlukeView Forms allowed	1	4
Ability to change company name on report	No	Yes
Supports multi-page forms	No	Yes

FlukeView Forms supports the following test tools:

- Fluke 1550B MegOhmMeter
- Fluke 1653 / 1653B Electrical Installation Tester
- Fluke 180 series
- Fluke 287 and 289
- Fluke 45
- Fluke 53-II and 54-II
- Fluke 568 IR Thermometer
- Fluke 789 ProcessMeter
- Fluke 8808A
- Fluke 8845A/8846A
- Fluke 89-IV and 87-IV
- Fluke 975 AirMeter Test Tool
- Fluke 983 Particle Counter

The ability of FlukeView Forms to support multiple instruments enables the user to install and learn only one software application in order to use these multiple tools fully.

Select the appropriate model number below based upon your requirements:

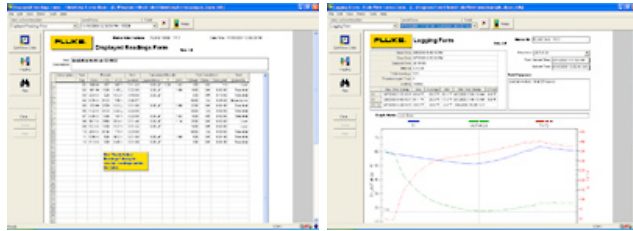
Model Number	Description	Cable	Application Level
FVF-UG	Software only upgrade, from FVF Basic to FlukeView Forms plus Designer**	No Cable included	FlukeView Forms plus Designer
FVF-SC1	Fluke 53-II, 54-II, 87-IV*, 89-IV*	Serial / IRDA	
FVF-SC2	Fluke 280 Series, 789, 1550B, 1653, 180 Series*	USB / IR	
FVF-SC4	Fluke 8808A, 8845A, 8846A, 45*	USB / Serial	FlukeView Forms BASIC
FVF-BASIC	Fluke 280 Series, 789, 1550B, 1653, 180 Series*	USB / IR	
FVF-SC5	Software only**	No Cable included	

* Obsolete

** For all instruments listed in table

FlukeView® Forms Basic (FVF-BASIC)

Owners of Fluke 280 series, 180 series, 789 and 1550B, who do not need the full power of FlukeView forms, can use FlukeView® Basic version. Transfer data points from your meter to your PC and use the two standard, non-customizable forms to display your readings in table or graphical form. For a larger array of forms or to use FlukeView® Forms Designer to customize your forms, upgrade to FlukeView® Forms version 3.3 with FVF-UG.

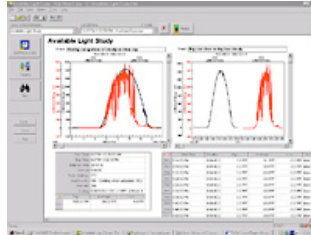


FlukeView® Forms Upgrade (FVF-UG)

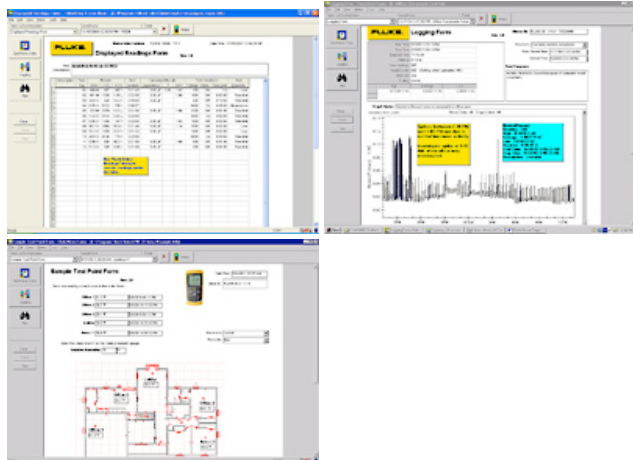
You can expand the power of your Fluke Test Tools by upgrading from FlukeView Forms Basic with the FlukeView® Forms Software Upgrade.

With the FlukeView® Forms Software Upgrade you can:

Instantly review and compare data from up to 6 different meters on the same document - providing analysis capabilities that a meter alone can't provide.



Use the array of Upgraded analysis and reporting forms to display your data in tables, graphs or helpful diagrams; even leave notes on the forms to draw attention to a particular event.



Or use the FlukeView® Forms plus Designer to customize your reports or add your company logo.



Model Name	Description
FlukeView Forms	FlukeView Forms Software