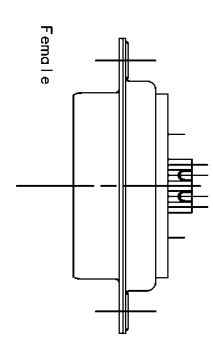
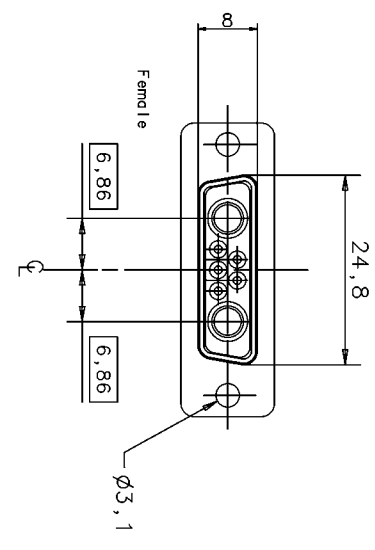
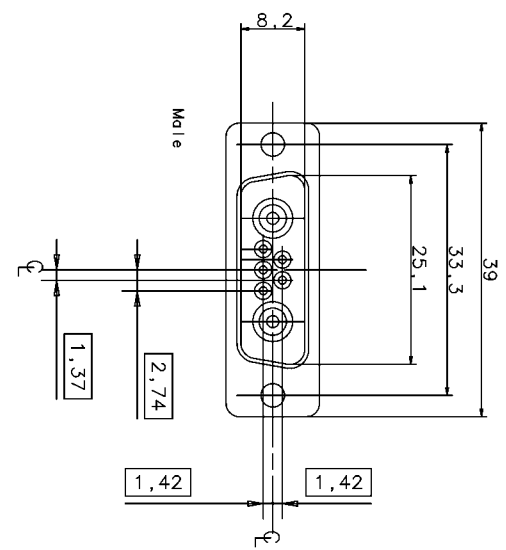
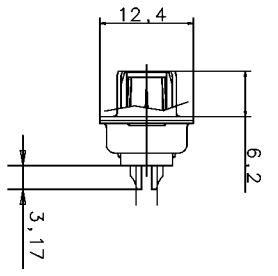
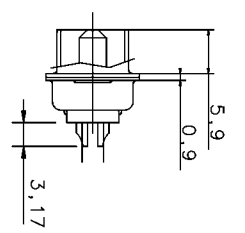


TECHNICAL DATA

'' D '' SUBMINIATURE CONNECTORS



SHELL : Steel
 finish : tinned

BODY : Glass filled thermoplastic
 Flame retardant to UL 94 V-0
 (resist to short term temperature 260°C)
 Colour : black

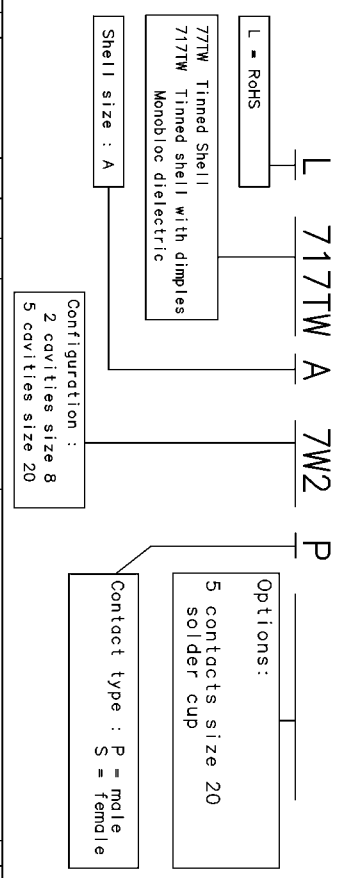
CONTACTS : Material for sockets : bronze
 Material for pins brass
 Finish of contact mating area :
 15 um inch. (0,4 um) Gold over Nickel

ELECTRICAL : Voltage rating 300 V Rms to 50Hz
 Nominal current 7,5 A (size20) 40 A (size 8)
 Withstanding Voltage >1000 V Rms to 50 Hz
 Contact resistance <math>< 5m\ \Omega</math>
 Insulator resistance >5000 M Ohms.

CLIMATIC : Temperature range -55°C up to +155°C
 Damp heat 56 days (40°C - 95 % HR)
 Other climatic specifications in accordance
 with NF C 93-425, sheet HE507

MECHANICAL : Insertion force per contact 1,2N <math>< F</math> <math>< 2,5\ N</math> (size 20)
 Extraction force per contact 0,4 N mini (size 20)
 Mating and unmating force size A 80N maxi 4,5N mini

MARKING : Amphenol -(serie number)
 Commercial reference
 Manufacturing date



Amphenol Socapex		Usine de Dole	
Echelle : 2		PLAN NOTICE	
IND. / MODIFICATION DATE / Espec. / Approval		POSSIBLE NOTICE 314-1™	
N° SERIE / DESIGNATION		L ** 71TW A 7W2 *	
0177F			

COMMUNICATION ET UTILISATION INTERDITES SAUF AUTORISATION

DATE DU TIRAGE

N° ETUDE

N° OUTIL

N° CLIENT