

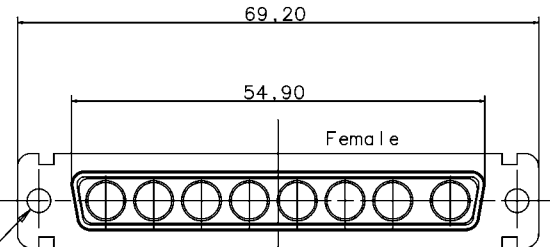
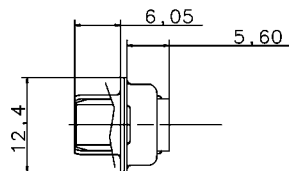
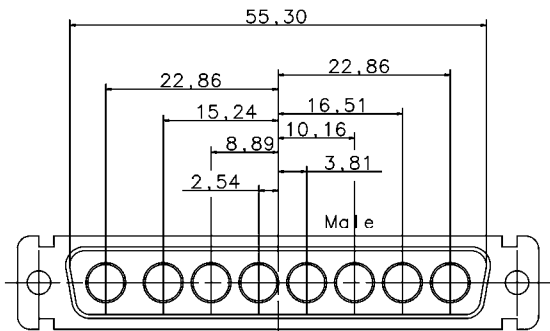
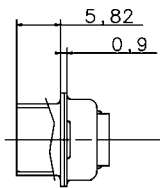
177W-A-1-122

DATE DU TIRAGE

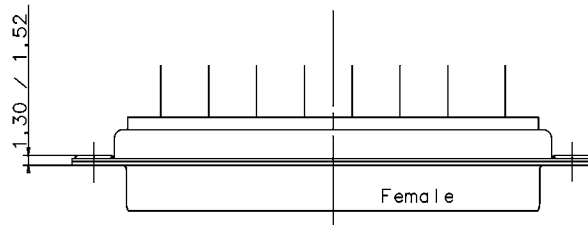
N CLIENT

N OUTIL

N ETUDE



∅3.1



TECHNICAL DATA

'' D '' SUBMINIATURE CONNECTORS

SHELL : Steel .
finish : or tinned

BODY : Glass filled thermoplastic .
Flame retardant to UL 94 V-0 . Colour : black .
(resist to short term temperature 500 F 260 C)

CONTACTS :

ELECTRICAL Voltage proof 300 V Rms to 50Hz .
Nominal current 40 A
Voltage proof >1000 V Rms to 50 Hz
Contact resistance <5m Ohms .
Insulator resistance >5000 M Ohms.

CLIMATIC Temperature range -67 F up to +300 F (-55 C + 150 C)
Damp heart 56 days (105 F - 95 % RH) (40 C)
Other climatic specifications in accordance with NF C 93-425, sheet HE507

MECHANICAL Mating and unmating force size C 150N maxi 11N mini

MARKING Amphenol -(serie number)
Commercial reference
Manufacturing date

L 77TW C 8W8 S

L = RoHS

77TW Tinned Shell
717TW Tinned shell with dimples
Monobloc dielectric

Shell size : C

Mounting type

Configuration :
8 cavities size 8

Options:

Contact type : P = male
Contact type : S = female

				Amphenol Socapex Usine de Dole	
B	conform to RoHS DM 05 23 010	22/06 05	Vallot	ECHELLE : 1.5	
X	Creation plan	30/07 98	Quere	PLAN NOTICE	
IND. MODIFICATION			DATE	Execu/Approb	DOSSIER 17-NOTICES Librairie 17V
N SERIE		DESIGNATION			
017F		L77TWC8W8S			