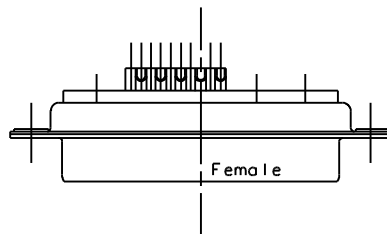
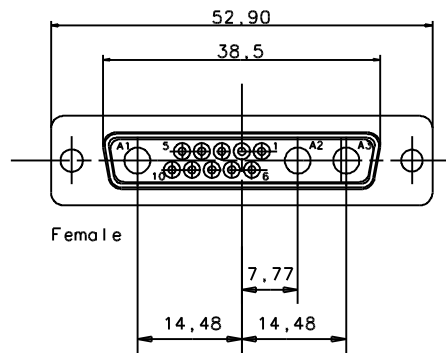
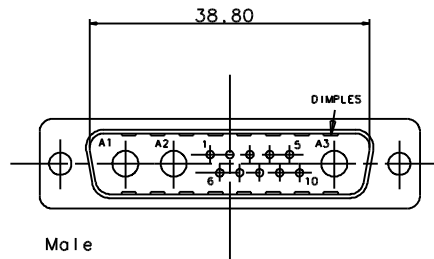
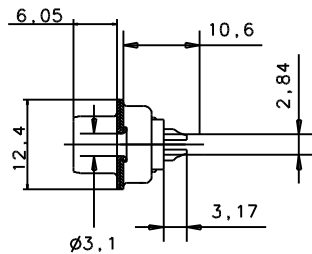
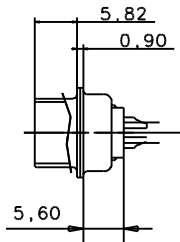


17TW-155

DATE DU TIRAGE

N OUTIL

N CLIENT



TECHNICAL DATA " D " SUBMINIATURE CONNECTORS

SHELL : Steel .
finish : Tinned

BODY : Glass filled thermoplastic .
Flame retardant to UL 94 V-0 .
(resist to short term temperature 500°F 260°C)
Colour : black .

CONTACTS : Material for sockets : bronze
Material for pins brass
Finish of contact mating area :
15 um inch. (0,4 um) Gold over Nickel

ELECTRICAL Voltage proof 300 V Rms to 50Hz .
Nominal current 7,5 A (size20) 40 A (size 8)
Voltage proof >1000 V Rms to 50 Hz
Contact resistance <5m Ohms .
Insulator resistance >5000 M Ohms .

CLIMATIC Temperature range -67 F up to +300 F
Damp heart 56 days (105 F - 95 % RH)
Other climatic specifications in accordance
with NF C 93-425, sheet HE507

MECHANICAL Insertion force per contact 1,2N < F <2,5 N (size 20)
Extraction force per contact 0,4 N mini (size 20)
Mating and unmating force size B 100N maxi 8N mini

MARKING Amphenol - ... (serie number)
Commercial reference
Manufacturing date

COAXIAL Teflon insulator ,
Outer spring contact in beryllium copper .
Metallic parts gold plated.

IMPEDANCE To be used at 50 ohms

L717TW B 13W3 P

L717TW Tinned shells for receptacle
RoHS version
L717TW Tinned shells with dimples for plug
RoHS version

Shell size : B

Mounting type

Configuration :
3 cavities size 8
10 cavities size 20

Options:

Contact type : P = male
: S = female

Amphenol Socapex
Usine de Dole

ECHELLE : 2

A Creation plan 28/01 2003 Ouere
IND. MODIFICATION DATE Execu/Approb

PLAN NOTICE

DOSSIER:NOTICE 17V

N SERIE 017F

DESIGNATION

L717TWB13W3P

COMMUNICATION ET UTILISATION INTERDITES SAUF AUTORISATION