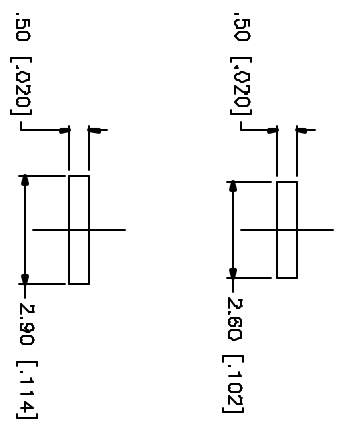
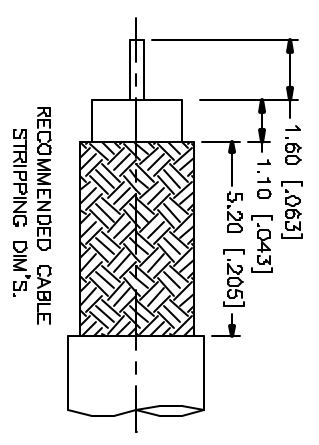
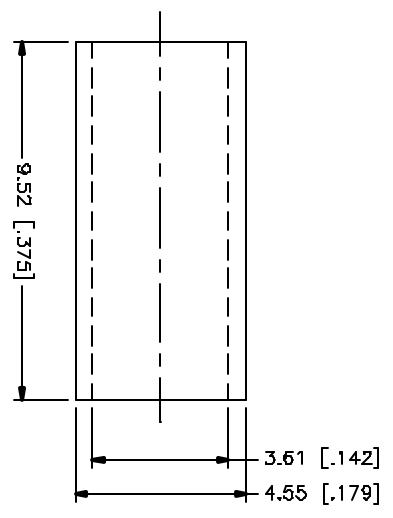
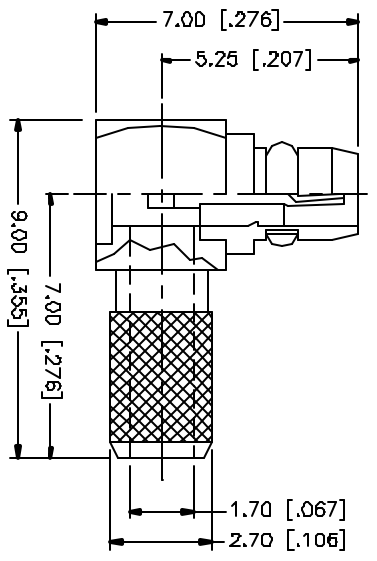


REV.	DATE	DESCRIPTION
NC	05/01/04	INITIAL RELEASE



CRIMP NOTES:
 1. CRIMPED FERRULE
 HEX CRIMP SIZE .151"
 2. CONTACT PIN TO SOLDER

QTY	FINISH	MATERIAL	DESCRIPTION
1	GOLD	COPPER	FERRULE
1	GOLD	BRASS	COVER
1	NATURAL	TEFLON	INSULATOR
1	GOLD	BER, COPPER	RETAINER RING
1	GOLD	BRASS	CONTACT PIN
1	NATURAL	TEFLON	INSULATOR
1	GOLD	BRASS	HOUSING/BODY
			DESCRIPTION

APPROVALS	DATE
DRAWN G.R.S.	05/01/04
CHECKED	
ISSUED	
SHEET 1 OF 1	

UNLESS OTHERWISE SPECIFIED, DIMENSIONS ARE IN INCHES AND THE DECIMAL FRACTION SHALL INDICATE THE DIMENSION SHALL.
UNLESS OTHERWISE SPECIFIED, DIMENSIONS ARE IN INCHES AND THE DECIMAL FRACTION SHALL INDICATE THE DIMENSION SHALL. UNLESS OTHERWISE SPECIFIED, DIMENSIONS FOR MILLIMETER ARE: 0.5 - 8mm ± 0.20mm 8 - 30mm ± 0.40mm 30 - 120mm ± 0.50mm UNLESS OTHERWISE SPECIFIED, DIMENSIONS FOR METRIC ARE: .020 - .315 = ± 0.007" .315 - 1.180 = ± 0.015" 1.180 - 4.724 = ± 0.020" DO NOT SCALE DRAWINGS

CAD FILE	DWG. NO.	REV.	SIZE	SCALE
C:/262/262111.DWG	262111.DWG	NC	A	NA

Amphenol Connex

PART DESCRIPTION
 MMCX R/A CRIMP PLUG
 (FOR RG-316U/D CABLE)

PART NO. 262111