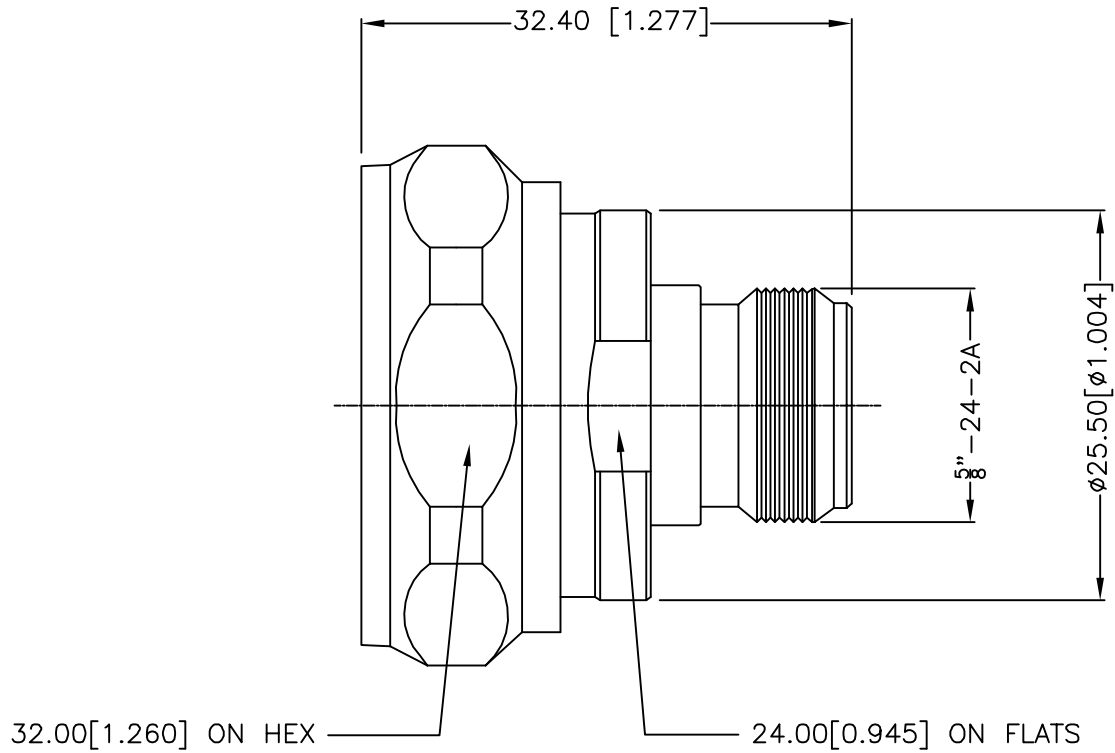


REV.	DATE	ECR NO.	DESCRIPTION
1	09/07/09	----	RELEASE TO MFG



				UNLESS OTHERWISE SPECIFIED DIMENSIONS ARE IN MILLIMETERS. DIMENSIONS IN [] ARE IN INCHES AND FOR CUSTOMER REFERENCE ONLY.	APPROVALS	DATE	AMPHENOL CONNEX								
				UNLESS OTHERWISE SPECIFIED TOLERANCES FOR MILLIMETERS ARE: 0.5 - 8mm ± 0.20mm 8 - 30mm ± 0.40mm 30 - 120mm ± 0.50mm	DRAWN	CLEMENT					09/07/09	PART DESCRIPTION			
				UNLESS OTHERWISE SPECIFIED TOLERANCES FOR INCHES ARE: .020 - .315 = ± 0.007" .315 - 1.180 = ± 0.015" 1.180 - 4.724 = ± 0.020"	CHECKED			N FEMALE TO 7/16 MALE ADAPTOR							
6	GASKET	SILICONE	RED	1	ISSUED			PART NO.							
5	CONTACT PIN	BERYLLIUM COPPER	SILVER	1	SHEET	1 OF 1		242136							
4	INSULATOR	TEFLON	NATURAL	1	CAD FILE	C:/242/242136.DWG	DWG. NO.	242136.DWG	REV.	1	SIZE	A	SCALE	NA	
3	BODY	BRASS	NICKEL	1	DO NOT SCALE DRAWING										
2	SHELL	BRASS	NICKEL	1											
1	HOUSING	BRASS	NICKEL	1											
DESCRIPTION				MATERIAL	FINISH	QTY									