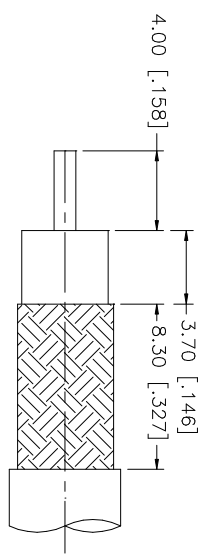
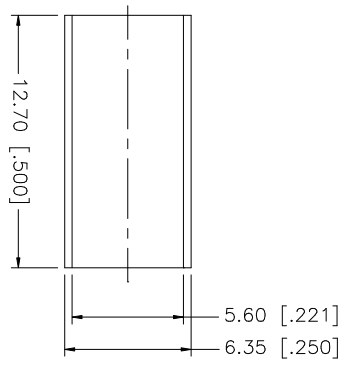
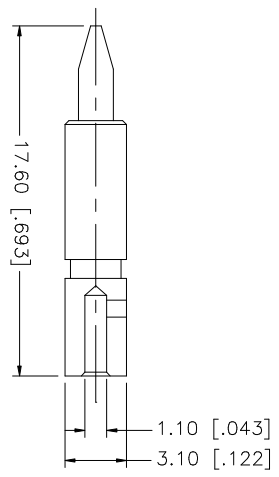
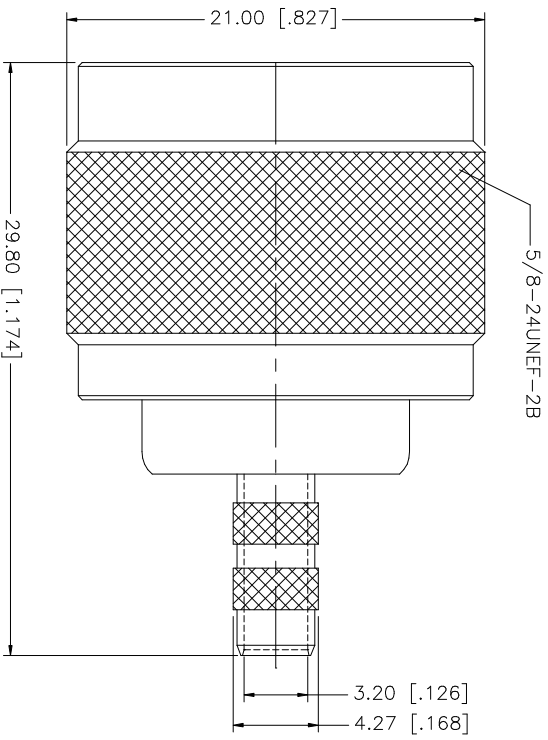


| REV. | DATE     | DESCRIPTION           |
|------|----------|-----------------------|
| A    | 01/30/04 | UPDATE DRAWING FORMAT |



RECOMMENDED  
CABLE STRIPPING DIM'S

- NOTE:
1. CRIMPED FERRULE  
HEX CRIMP SIZE .213"
  2. CRIMPED CONTACT PIN  
HEX CRIMP SIZE .105"

| QTY | FINISH  | MATERIAL | DESCRIPTION |
|-----|---------|----------|-------------|
| 1   | NEXCOTE | COPPER   | FERRULE     |
| 1   | GOLD    | BRASS    | CONTACT PIN |
| 1   | NATURAL | TEFLON   | INSULATOR   |
| 1   | NEXCOTE | BRASS    | BODY        |

|  |
|--|
| UNLESS OTHERWISE SPECIFIED DIMENSIONS ARE IN MILLIMETERS. DIMENSIONS IN [ ] ARE IN INCHES AND FOR CUSTOMER REFERENCE ONLY.             |
| UNLESS OTHERWISE SPECIFIED TOLERANCES FOR MILLIMETERS ARE:<br>0.5 - 8mm ± 0.20mm<br>8 - 30mm ± 0.40mm<br>30 - 120mm ± 0.50mm           |
| UNLESS OTHERWISE SPECIFIED TOLERANCES FOR INCHES ARE:<br>.020 - .315 = ± 0.007"<br>.315 - 1.180 = ± 0.015"<br>1.180 - 4.174 = ± 0.020" |
| DO NOT SCALE DRAWING   |

|              |          |
|--------------|----------|
| APPROVALS    | DATE     |
| DRAWN G.R.S. | 01/30/04 |
| CHECKED      |          |
| ISSUED       |          |
| SHEET 1 OF 1 |          |

|          |                   |
|----------|-------------------|
| CAD FILE | C:/172/172142.DWG |
| DWG. NO. | 172142.DWG        |
| REV.     | A                 |
| SIZE     | A                 |
| SCALE    | NA                |

|   |        |
|---|--------|
| <p align="center"><b>Amphenol Connex</b></p> <p align="center">N CRIMP PLUG<br/>(FOR RG-55/U, 142A/U, 223/U, 400/U)</p> |        |
| PART NO.  | 172142 |