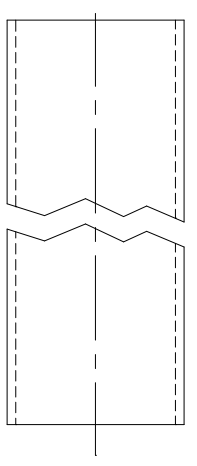
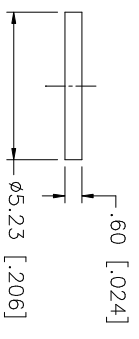
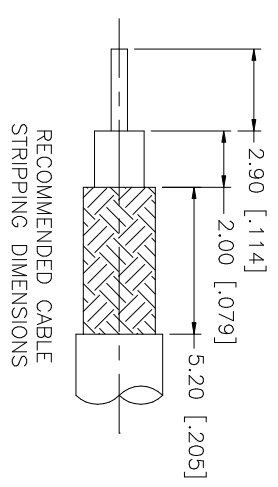
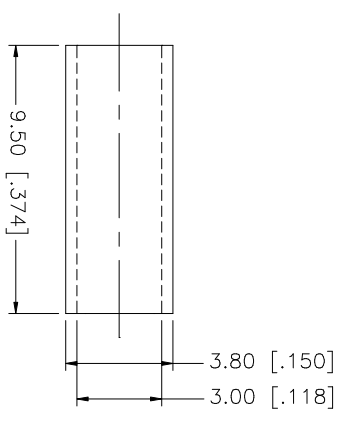
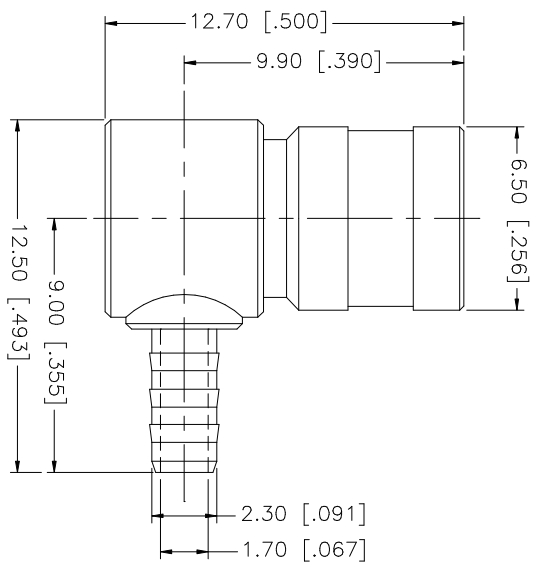


REV.	DATE	DESCRIPTION
NC	02/24/03	INITIAL RELEASE



(HEAT SHRINK)

- NOTE:
1. CRIMPED FERRULE
HEX CRIMP SIZE .128"
 2. CONTACT PIN TO SOLDER

QTY	DESCRIPTION	MATERIAL	FINISH	DO NOT SCALE DRAWING	APPROVALS	DATE	PART DESCRIPTION		
1	HEAT SHRINK TUBE			UNLESS OTHERWISE SPECIFIED DIMENSIONS ARE IN MILLIMETERS. DIMENSIONS IN [] ARE IN INCHES AND FOR CUSTOMER REFERENCE ONLY. TOLERANCES FOR MILLIMETERS ARE: 0.5 - 8mm ± 0.20mm 8 - 30mm ± 0.40mm 30 - 120mm ± 0.50mm	G.R.S.	02/24/03	SMB R/A CRIMP PLUG (FOR RG-174/U, 188A/U, 316/U CABLE)		
1	COVER	BRASS	GOLD	UNLESS OTHERWISE SPECIFIED DIMENSIONS ARE IN MILLIMETERS. DIMENSIONS IN [] ARE IN INCHES AND FOR CUSTOMER REFERENCE ONLY. TOLERANCES FOR MILLIMETERS ARE: 0.20 - 315 = ± 0.007" 315 - 1180 = ± 0.015" 1180 - 41724 = ± 0.020"	CHECKED				
1	FERRULE	COPPER	GOLD		ISSUED				
1	CONTACT PIN	BER. COPPER	GOLD		SHEET	1 OF 1			
1	INSULATOR	TEFLON	NATURAL						
1	BODY	BRASS	GOLD						
1	HOUSING	DIE CAST	GOLD						
	DESCRIPTION	MATERIAL	FINISH	QTY	CAD FILE	DWG. NO.	REV. NC	SIZE A	SCALE NA
					C:/142/142194.DWG	142194.DWG			

Amphenol Connex