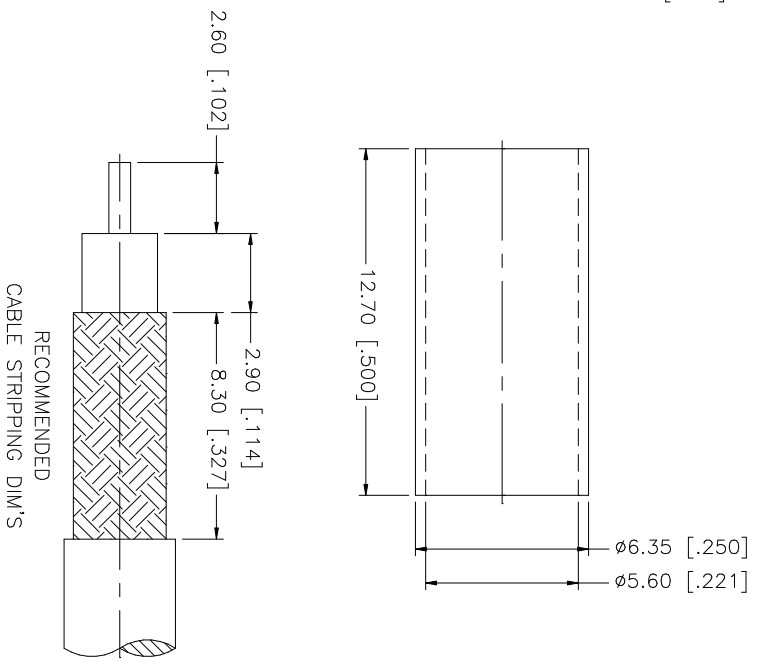
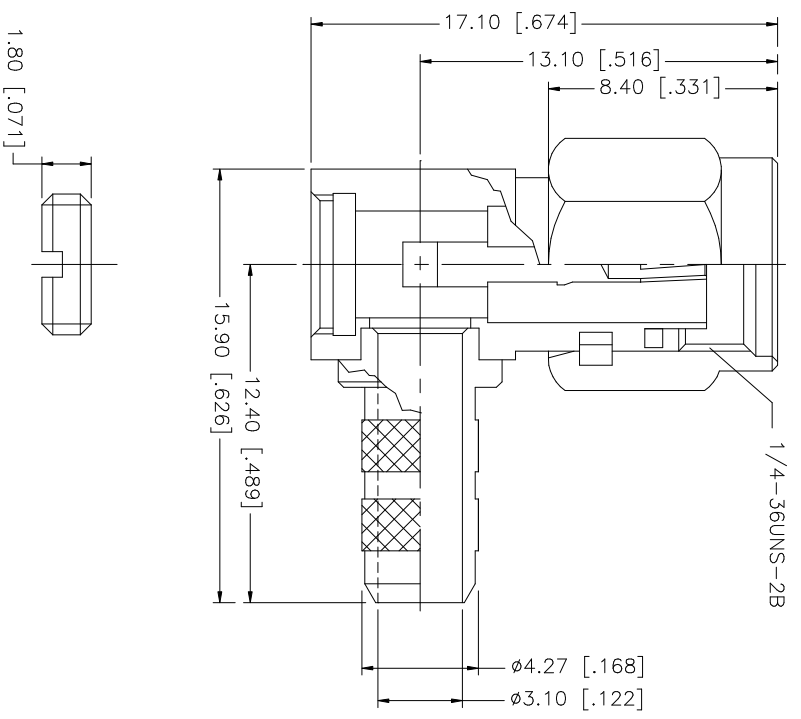


REV.	DATE	DESCRIPTION
A	04/31/03	UPDATE DRAWING FORMAT



NOTE:
 1. CRIMPED FERRULE
 HEX CRIMP SIZE .213"

QTY	DESCRIPTION	MATERIAL	FINISH	QTY	DO NOT SCALE DRAWING	CAD FILE	DWG. NO.	REV.	SIZE	SCALE
1	1/4-36UNS-2B									
1	FERRULE	COPPER	GOLD				132194.DWG	A	A	NA
1	COVER	BRASS	GOLD							
1	GASKET	SILICONE	RED							
1	RETAINER RING	BER. COPPER	NATURAL							
1	CONTACT PIN	BRASS	GOLD							
1	INSULATOR	TEFLON	NATURAL							
1	BODY/BARREL	BRASS	GOLD							
	DESCRIPTION	MATERIAL	FINISH	QTY						

Amphenol Connex

PART DESCRIPTION
 SMA R/A CRIMP PLUG
 (FOR RG-59/U, 223/U, 142/U, 400/U CABLE)

PART NO. 132194

APPROVALS	DATE
DRAWN G.R.S.	04/31/03
CHECKED	
ISSUED	
SHEET 1 OF 1	

UNLESS OTHERWISE SPECIFIED DIMENSIONS ARE IN MILLIMETERS DIMENSIONS IN INCHES ARE IN INCHES AND FOR CUSTOMER REFERENCE ONLY.
 UNLESS OTHERWISE SPECIFIED TOLERANCES FOR MILLIMETERS ARE:
 0.3 - 8mm ± 0.20mm
 8 - 30mm ± 0.40mm
 30 - 120mm ± 0.50mm
 UNLESS OTHERWISE SPECIFIED TOLERANCES FOR INCHES ARE:
 .020 - .315 = ± 0.007"
 .315 - 1.180 = ± 0.015"
 1.180 - 4.724 = ± 0.020"
 DO NOT SCALE DRAWING

QTY	DESCRIPTION	MATERIAL	FINISH	QTY
1	1/4-36UNS-2B			