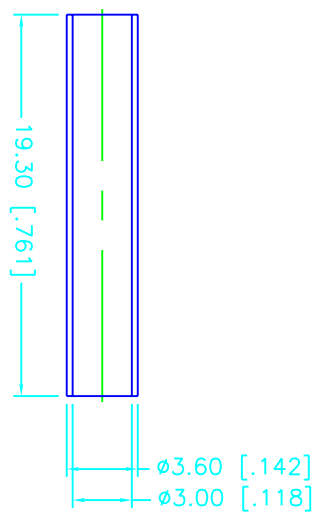
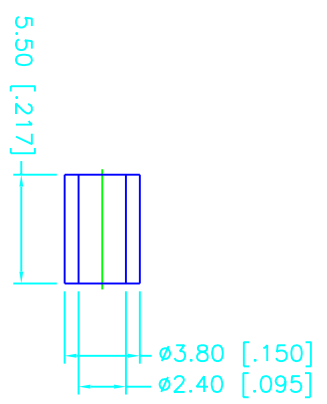
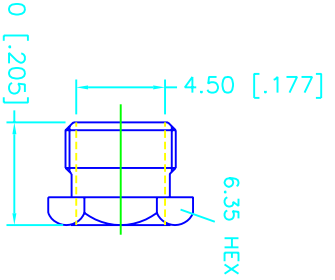
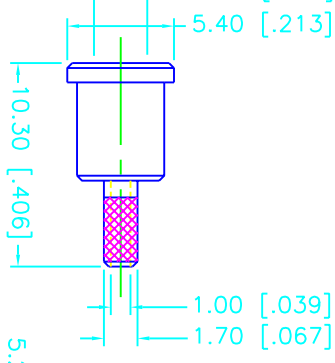
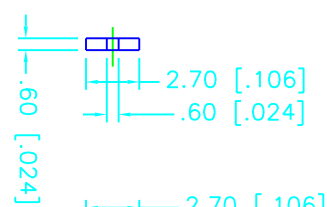
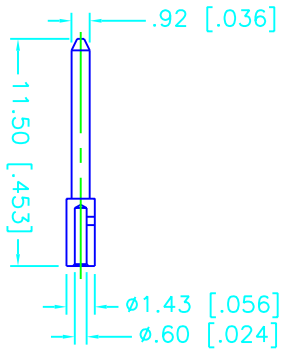
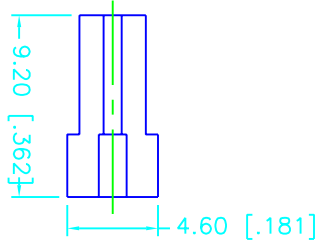
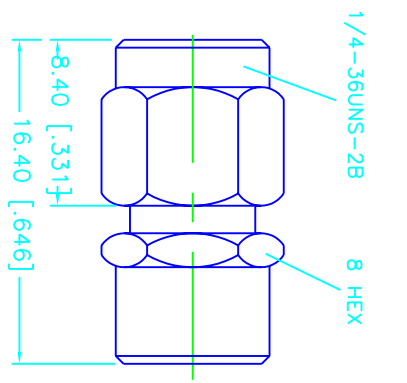
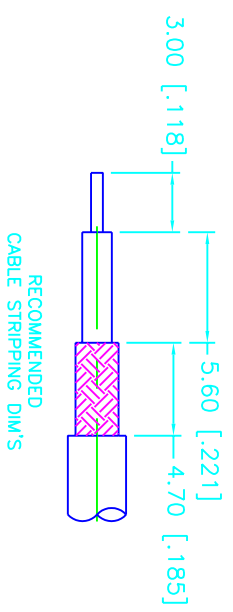


REV.	DATE	DESCRIPTION
A	06/25/98	ADDITIONS AND MODIFICATIONS TO CONNECTOR
B	01/27/00	MODIFY INSULATOR / CONTACT PIN



DESCRIPTION	MATERIAL	FINISH	UNLESS OTHERWISE SPECIFIED DIMENSIONS ARE IN MILLIMETERS	APPROVALS	DATE	TITLE	SCALE	PART NO.	SHEET	OF
1 BODY	BRASS	GOLD	DIMENSIONS IN () ARE IN INCHES FOR CUSTOMER REFERENCE ONLY	DRAWN	01/27/00	SMA CRIMP PLUG (FOR RG-178B/U, 196A/U CABLE)	A	99001	132193	1 OF 1
2 INSULATOR	TEFLON	NATURAL		CHECKED						
3 CONTACT PIN	BRASS	GOLD	UNLESS OTHERWISE SPECIFIED TOLERANCES FOR MILLIMETERS ARE: 0.5-6 = ± 0.2 6-30 = ± 0.4 30-120 = ± 0.6 120-315 = ± 1 315-1000 = ± 1.6 1000-2000 = ± 2.4	ISSUED						
4 BARREL	BRASS	GOLD								
5 HEX NUT	BRASS	GOLD								
6 FERRULE	COPPER	GOLD								
7 HEAT SHRINK										
8			DO NOT SCALE DRAWING							



132193.DWG