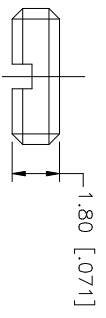
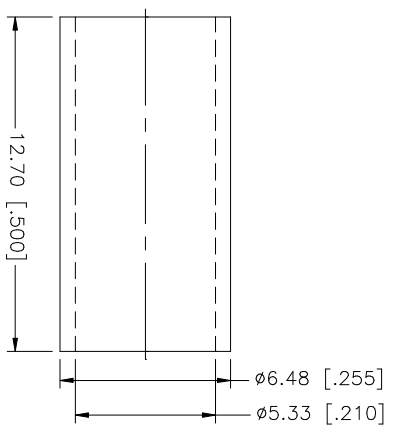
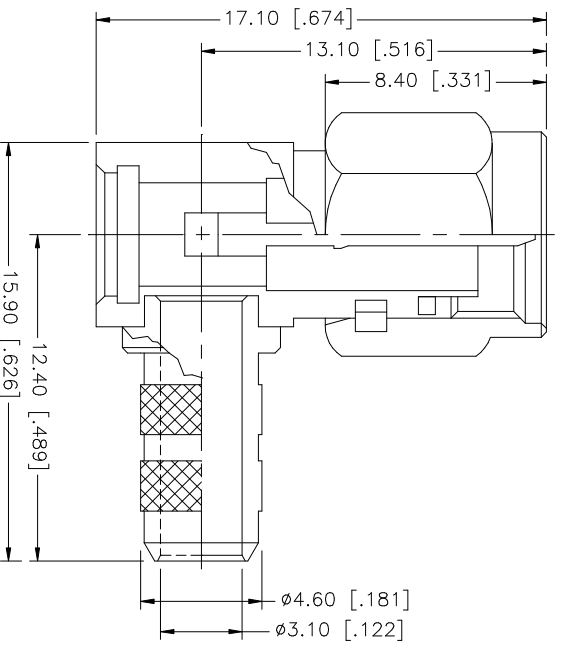
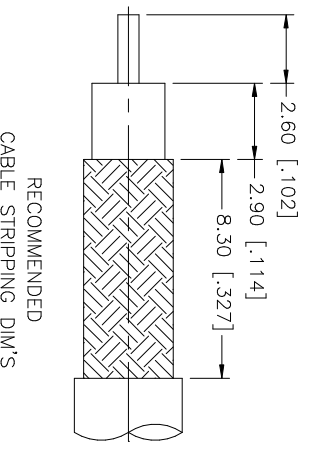


REV.	DATE	DESCRIPTION
NC	02/24/03	INITIAL RELEASE



- NOTE:
1. CRIMPED FERRULE
HEX CRIMP SIZE .213"
 2. CONTACT PIN TO SOLDER

QTY	DESCRIPTION	MATERIAL	FINISH	UNIT OF MEASURE	UNLESS OTHERWISE SPECIFIED DIMENSIONS ARE IN MILLIMETERS DIMENSIONS IN [] ARE IN INCHES AND FOR CUSTOMER REFERENCE ONLY.	UNLESS OTHERWISE SPECIFIED TOLERANCES FOR MILLIMETERS ARE:	UNLESS OTHERWISE SPECIFIED TOLERANCES FOR INCHES ARE:	APPROVALS	DATE	PART DESCRIPTION	
1	HOUSING W/ BARREL	BRASS	GOLD			0.5 - 8mm ± 0.20mm	.020 - .315 = ± 0.007"	DRAWN	G.R.S.	02/24/03	SMA R/A CRIMP PLUG (FOR RG-141/U CABLE)
1	INSULATOR	TEFLON	NATURAL			8 - 30mm ± 0.40mm	.315 - 1.180 = ± 0.015"	CHECKED			
1	CONTACT PIN	BRASS	GOLD			30 - 120mm ± 0.50mm	1.180 - 4.724 = ± 0.020"	ISSUED			
1	COVER	BRASS	GOLD					SHEET	1 OF 1		
1	FERRULE	COPPER	GOLD								
1	CABLE STRIPPING DIM'S										
1	DESCRIPTION										

Amphenol Connex

CAD FILE	C:/132/132122.DWG	DWG. NO.	132122.DWG	REV.	NC	SIZE	A	SCALE	NA
----------	-------------------	----------	------------	------	----	------	---	-------	----