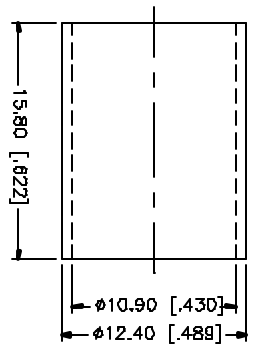
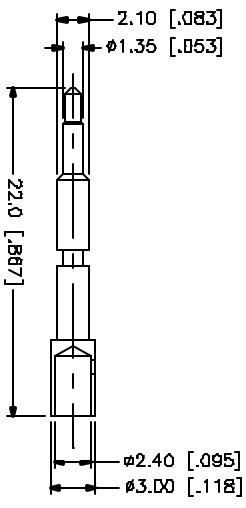
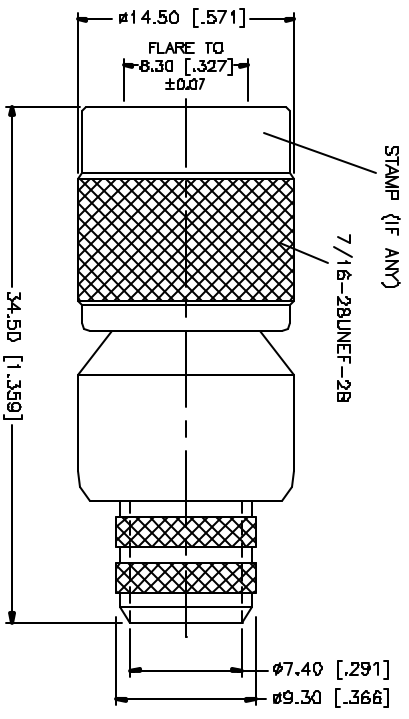
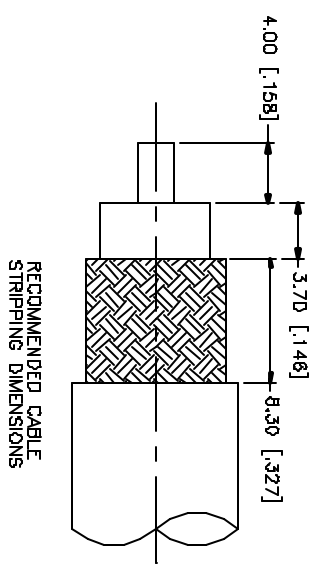


REV.	DATE	DESCRIPTION
NC	05/27/97	INITIAL RELEASE
A	05/01/04	UPDATE DRAWING FORMAT



NOTE:  
 1. CRIMPED FERRULE  
 HEX CRIMP SIZE .429"  
 2. CRIMPED CONTACT PIN  
 HEX CRIMP SIZE .100"

QTY	FINISH	MATERIAL	DESCRIPTION
1	NICKEL	COPPER	FERRULE
1	GOLD	BRASS	CONTACT PIN
1	NATURAL	TERFLON	INSULATOR
1	NICKEL	BRASS	BODY

APPROVALS	DATE
DRAWN G.R.S.	05/01/04
CHECKED	
ISSUED	
BHEET 1 OF 1	

**Amphenol Connex**

**TNC CRIMP PLUG**  
 (FOR BELDEN 8/U, 213U)

1222394

DWG. NO. 1222394.DWG    REV. A    SIZE A    SCALE NA