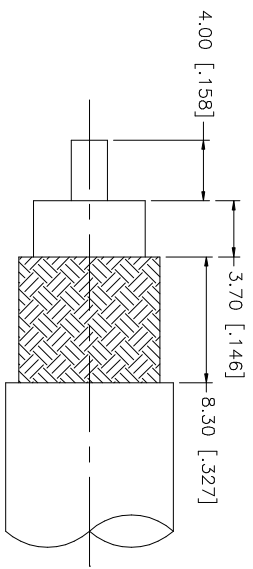
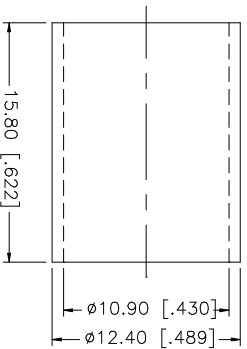
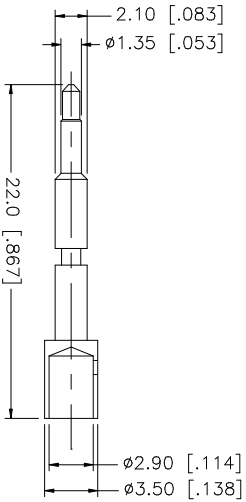
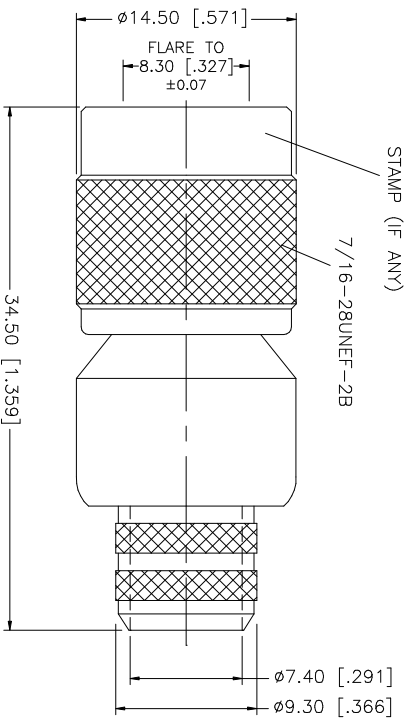


REV.	DATE	DESCRIPTION
A	01/15/04	UPDATE DRAWING FORMAT



RECOMMENDED CABLE STRIPPING DIMENSIONS



- NOTE:
1. CRIMPED FERRULE
HEX CRIMP SIZE .429"
 2. CONTACT PIN TO SOLDER
OR .118" HEX CRIMP

QTY	DESCRIPTION	MATERIAL	FINISH	FINISH	QTY	DO NOT SCALE DRAWING
1	INSULATOR	TEFLON	NATURAL	NICKEL	1	1.180 - 1.180 = ± 0.015"
1	BODY	BRASS	NICKEL	NICKEL	1	1.180 - 4.724 = ± 0.020"
1	FERRULE	COPPER	NICKEL	NICKEL	1	0.5 - 8mm ± 0.20mm
1	CONTACT PIN	PHOS. BRONZE	GOLD	GOLD	1	8 - 30mm ± 0.40mm
1	INSULATOR	TEFLON	NATURAL	NICKEL	1	30 - 120mm ± 0.50mm
1	BODY	BRASS	NICKEL	NICKEL	1	0.5 - 8mm ± 0.20mm
1	FERRULE	COPPER	NICKEL	NICKEL	1	8 - 30mm ± 0.40mm
1	CONTACT PIN	PHOS. BRONZE	GOLD	GOLD	1	30 - 120mm ± 0.50mm
1	INSULATOR	TEFLON	NATURAL	NICKEL	1	0.5 - 8mm ± 0.20mm
1	BODY	BRASS	NICKEL	NICKEL	1	8 - 30mm ± 0.40mm

Amphenol Connex

TNC CRIMP PLUG
(FOR BELDEN 8214, 9913, 9914 CABLE)

APPROVALS	DATE
DRAWN G.R.S.	01/15/04
CHECKED	
ISSUED	
SHEET 1 OF 1	

PART NO.	DWG. NO.	REV.	SIZE	SCALE
122393	122393.DWG	A	A	NA

CAD FILE C:/122/122393.DWG